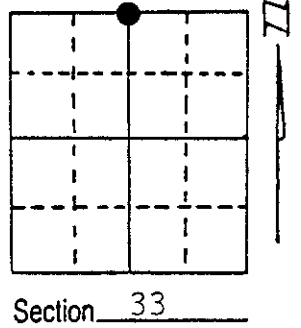


U.S. PUBLIC LAND SURVEY MONUMENT RECORD

Note: This form is intended and designed to fulfill all requirements of Wisconsin Administrative Code, Chapter A-E 5.02, U.S. Public Land Survey Monument Record (3) (a) (b) (c) (d) (e) (f) (g) (h) (i). An additional sheet may be added if necessary to conform with said requirements.

(a) Corner location: Township 39 North
 Range 6 East/~~West~~
 Town/~~City/Village~~ Minocqua
 County Oneida



Section 33

(b) (f) (g) (h) Description of monument found at this corner and if it was accepted, state all evidence (material, testimonial, occupational, plats, records, other monuments) used as a basis for accepting. If not accepted or if nothing was found, state evidence used as basis for establishing location. If reestablished through lost corner proportionate methods, indicate all monuments, distances and directions used to establish.

The original government survey was performed by Alexander Anderson in October, 1863 in which a wood post was set:

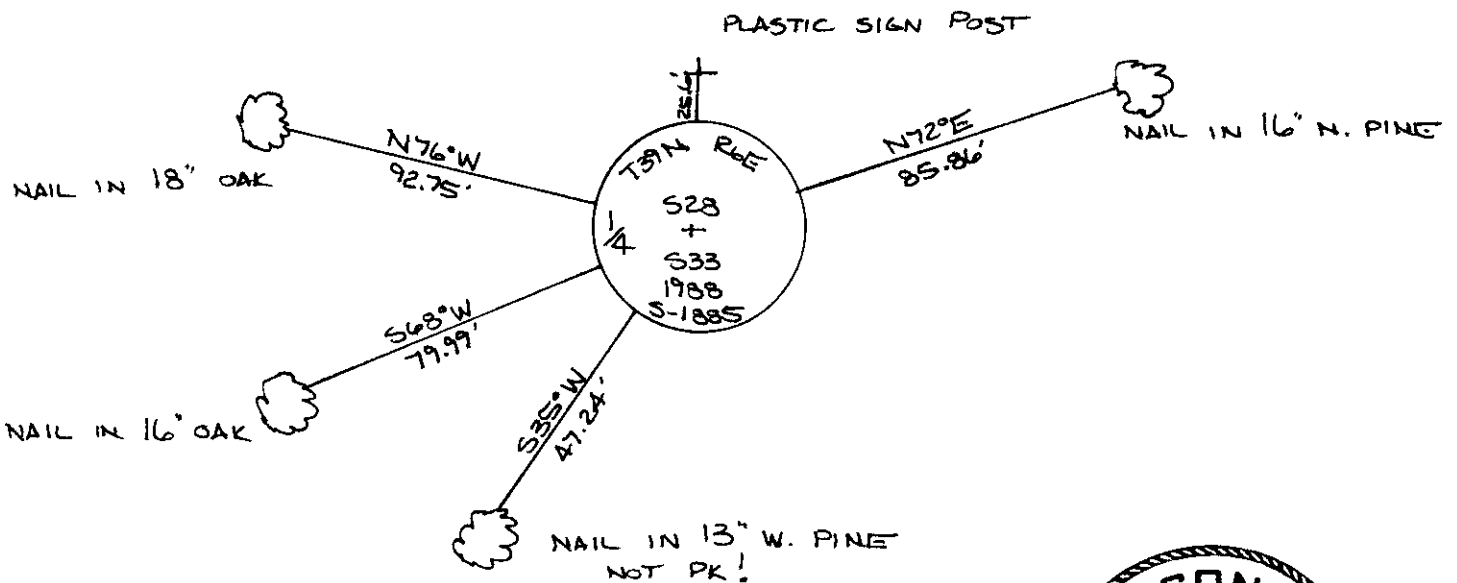
Birch 7" N10°E, 9 lks.
 Aspen 6" S38°W, 17 lks.

I found and accepted a 1-1/4" dia. 27" long iron rod which has been used in previous surveys in the area. I replaced the iron rod with a 30" long aluminum "breakaway" monument with a 4" dia. aluminum tablet stamped to identify its location. I established the following witnesses:

Set nail in Oak 16" S68°W, 79.99 feet
 Set nail in Oak 18" N76°W, 92.75 feet
 Set nail in Norway Pine 16" N72°E, 85.86 feet
 (not PK)(old BT) Set nail in White Pine 13" S35°W, 47.24 feet
 Set plastic sign post N2°E, 25.6 feet

(Monument set 4" below pavement of Blue Lake Road.)

(c) (d) (e) Plan view of corner with ties to at least 4 witness monuments. If in disagreement with previously established corner, show the distances between the two corners and also indicate the ties to the disputed corner.



(i) I, JEFFREY W. AUSTIN S-1885
 (type or print name) certify that the corner location on this record was determined by me or under my direction and control and that this U.S. Public Land Survey Monument Record is correct and complete to the best of my knowledge and belief.



[Signature] NOVEMBER 2, 1988
 Signature Date

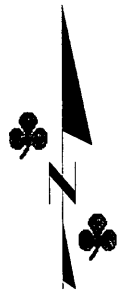
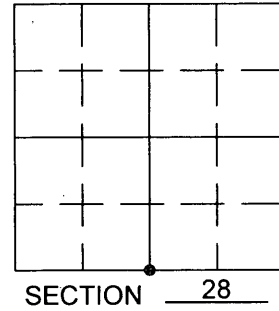
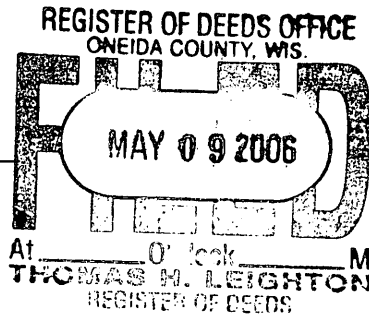
3906280020

Index No. V-11

U.S PUBLIC LAND SURVEY MONUMENT RECORD

Note: This form is intended and designed to fulfill all requirements of Wisconsin Administrative Code, Chapter A-E 7.08 U.S. Public Land Survey Monument Record (3) (a) (b) (c) (d) (e) (f) (g) (h) (i). An additional sheet may be added if necessary to conform to said requirements.

(a) Corner location: Township 39 North
 Range 6 East
 Town/City/Village MINOCQUA
 County ONEIDA



(b) (f) (g) (h) Description of monument found at this corner and if it was accepted, state all evidence (material, testimonial, occupational, plats, records, other monuments) used as a basis for accepting. If not accepted or if nothing was found, state evidence used as basis for establishing locations. If reestablished through lost corner proportionate methods, indicate all monuments, distances and directions used to establish. Indicate type of monument found or set and sign post.

October, 1863, Alexnader Anderson, Set Quarter Section Post with Bt's: Birch 7" N 10° E, 9 Links
 Aspen 6" S 38° W, 17 Links

November 2nd, 1988, Jeffrey W. Austin, found and accepted a 1 1/4" dia. 27" long iron rod and replaced it with a 30" long aluminum "breakaway" monument with a 4" dia. aluminum tablet 4" below pavement of Blue Lake Road and established Bt's: nail in Oak 16" S 68° W, 79.99 feet
 nail in Oak 18" N 76° W, 92.75 feet
 nail in Norway Pine 16" N 72° E, 85.86 feet
 nail in White Pine 13" S 35° W, 47.24 feet
 plastic sign post N 2° E, 25.6 feet

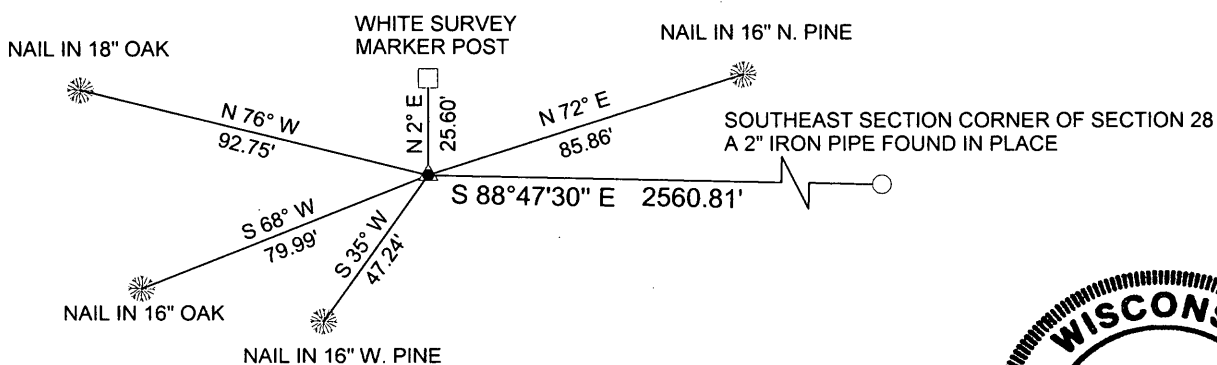
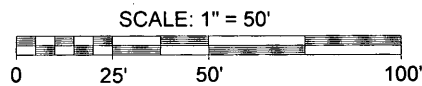
April 20th, 1992, Survey Map B 2471 by James Rein, recorded at the Oneida County Land Information Office, calls for a "4" dia. Bernsten Monument found in place See U.S.P.L.S. Mon Rec. "

February 5th, 1998, Survey Map B 3864 by Stuart Foltz, recorded at the Oneida County Land Information Office, calls for a Bernsten Mon Found.

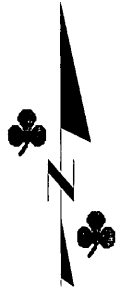
October 10th, 2002, Survey Map B 5136 by James Rein, recorded at the Oneida County Land Information Office, calls for Corner position in asphalt pavement from U.S.P.L.S. monument records.

September, 2005, I found all of Austins Bt's and Set a Survey Marker Nail over a magnetic dip 1' North of the existing centerline of Blue Lake Road, Bt's verified position as shown below.

(c) (d) (e) Plan view of corner with ties to at least 4 witness monuments. If in disagreement with previously established corner, show the distances between the two corners and also indicate the ties to the disputed corner.

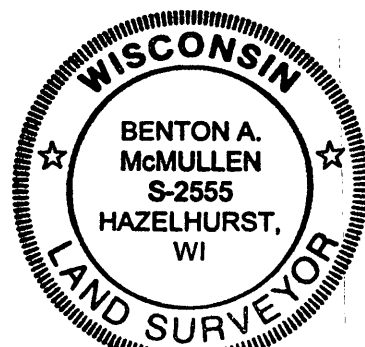


ASSUMED NORTH, BASED ON THE SOUTH LINE OF SECTION 28 WHICH BEARS S 88°47'30" E



(i) I, Benton A. McMullen certify that the corner location on this record was determined by me or under my direction and control and that this U.S. Public Land Survey Monument Record is correct and complete to the best of my knowledge and belief.

Benton A. McMullen Signature
5/5/06 Date



390628 0020