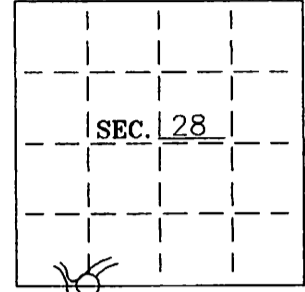


U. S. PUBLIC LAND SURVEY MONUMENT RECORD

Note: This form is intended and designed to fulfill all requirements of Wisconsin Administrative Code—Chapter A-E 7.08 U. S. Public Land Survey Monument Record (3)(a)(b)(c)(d)(e)(f)(g)(h)(i). An additional sheet may be added if necessary to conform with said requirements.

(a) CORNER LOCATION: State Plane Coordinates
 MC S line corner of Sec. 28 X _____
 Township 39 North Y _____
 Range 06 East Datum Base _____
 Town/XXX Minocqua County of Oneida



(b) HISTORY OF ORIGINAL CORNER ESTABLISHMENT:
 Original Surveyor: Alexander Anderson
 Date of Survey: Commenced October 15, 1863
 Completed October 23, 1863

Original B.T.'S
 Y. Pine 14" S12°W 21 lks
 Y. Pine 16" N70°E 17 lks

(b)(f)(g)(h) Description of monument found at this corner and if it was accepted—state all evidence (material—testimonial—occupation—plats—records—other monuments) used as a basis for accepting. If not accepted or if nothing was found state evidence used as basis for establishing location. If reestablished through lost corner proportionate methods indicate all monuments—distances and directions used to establish. Indicate type of monument and sign post found or set.

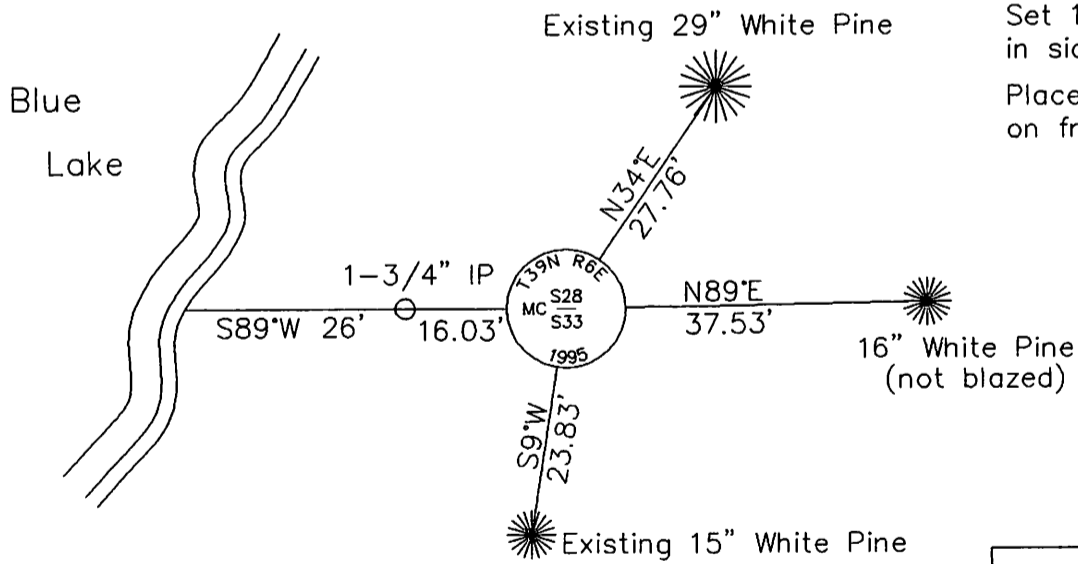
December 1928--Notes of Hall's subdivision of Sec 28--references the following BT's: White Pine 18" N34°E 26.9' and White Pine 11" S9 3/4°W 23.5'.

August 1971--John Fisher map--references iron pipe set S88° 09'W 14.5' from 1/8 corner also an 8" Hemlock N80°W 4.5' and an 18" White Pine S65°W 6.7'.

October 19, 1995--Found 4" square concrete monument labeled "MC" and two original stumps--Red Pine stump N71°E 11.7'(17lks) and Red Pine stump S14°W 14.2'(21lks). Also found a 1-3/4" iron pipe S89°W 16.03' which is probably the Fisher pipe.

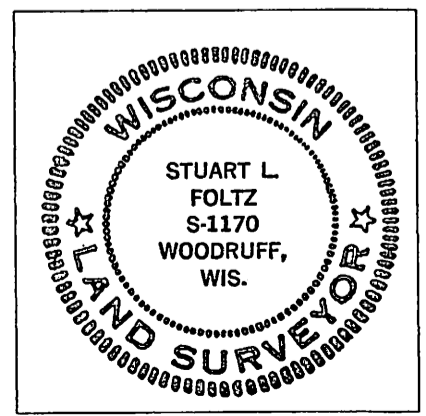
Replaced 4" concrete with a 2-1/2" dia. by 30" long aluminum-capped Oneida County monument. Set a plastic signpost 1-1/2' northeast.

(c)(d)(e) Plan view of corner with ties to at least 4 witness monuments. If in disagreement with previously established corner-show the distances between the two corners and also indicate the ties to the disputed.



Set 16d galvanized nails in side of bearing trees.
 Placed survey marker plaque on front of bearing trees.

(i) I Stuart L. Foltz
 hereby certify that the corner location on this record was determined by me or under my direction and control and that this U.S. Public Land Survey Monument Record is correct and complete to the best of my knowledge and belief.



INDEX NO. V-10-11

Stuart L. Foltz 12-20-95
 Signature Date

29 MRS/16/21
 3906280034

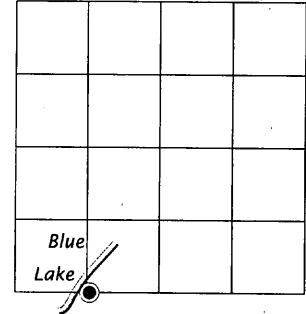
COUNTY COORDINATE SURVEY MONUMENT RECORD

(a) CORNER LOCATION:

Meander Corner SW corner of G.L. 5
 Section 28
 Township 39 North
 Range 6 East
 Town of Minocqua
 County of Oneida

COORDINATES

North: 235667.12
 East: 177271.89
 Control Station: O. C. GPS #276
 Latitude: 45° 51' 01.89528" N.
 Longitude: 89° 42' 10.55554" W.
 Datum: NAD-83, '91
 Method: Offset RTK-GPS



SECTION 28

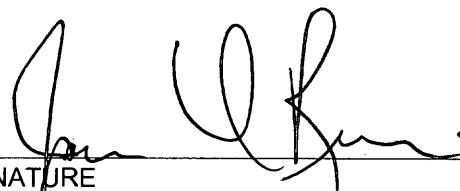
THIS MONUMENT RECORD HAS BEEN PREPARED FOR THE PURPOSE OF REFERENCING THE CORNER POSITION TO THE ONEIDA COUNTY COORDINATE SYSTEM USING GPS METHODS. PROVIDE DESCRIPTION OF THE CORNER MONUMENT IN DETAIL.

December 19, 2013, 2.4" dia. Oneida County aluminum monument found in conformance with U.S. Public Land Survey Monument Record by Stuart L. Foltz, dated 12-20-95.

MAP # L2962
DATE FILED <u>4/23/14</u>
BY <u>JB</u>
DESCRIPTION FILED
ONEIDA CO. SURVEYOR'S OFFICE

I, JAMES D. REIN, REGISTERED LAND SURVEYOR NO. S-1234
 HEREBY CERTIFY THAT THE CORNER LOCATION ON THIS RECORD
 WAS DETERMINED BY ME OR UNDER MY DIRECTION AND CONTROL
 AND THE INFORMATION SHOWN HEREON IS CORRECT AND COMPLETE
 TO THE BEST OF MY KNOWLEDGE AND BELIEF.




4/05-14
 SIGNATURE DATE

CORNER I.D. GRID NO. 3906280029

