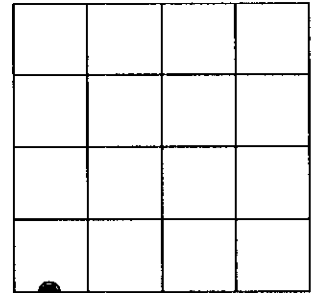


U.S. PUBLIC LAND SURVEY MONUMENT RECORD

Note: This form is intended and designed to fulfill all requirements of Wisconsin Administrative Code, Chapter A-E 7.08 U.S. Public Land Survey Monument Record (3)(a)(b)(c)(d)(e)(f)(g)(h)(i). An additional sheet may be added if necessary to conform with said requirements.

(a) CORNER LOCATION: * @ 70.07 ch. West of SE Sec. Corner
Meander corner* of Sec. 28 State Plane Coordinates
 Township 39 North X _____
 Range 6 East Y _____
 Town/~~XXX/XXX~~ Minocqua Datum Base _____
 County of Oneida



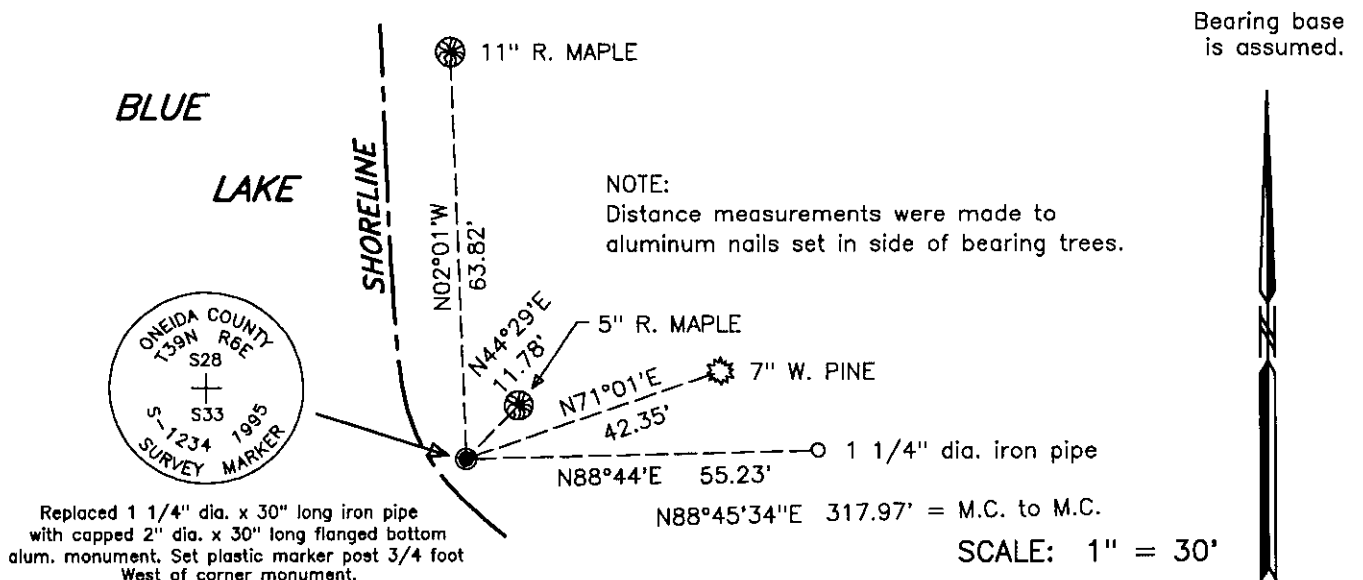
(b) HISTORY OF ORIGINAL CORNER ESTABLISHMENT
 Original Surveyor: Alexander Anderson Original B.T.'S SECTION 28
 Date of Survey: Commenced October 13th, 1863 Birch 8" S88°E 141 links.
 Completed October 23rd, 1863 Birch 10" N8°E 53 links.

(f)(g)(h) Description of monument found at this corner and if it was accepted, state all evidence (material, testimonial, occupational, plats, records, other monuments) used as a basis for establishing location. If not accepted of if nothing was found, state evidence used as basis for establishing location. If reestablished through lost corner proportionate methods, indicate all monuments, distances and directions used to establish. Indicate type of monument and sign post found or set.

August 27th, 1982: David F. McMullen, R.L.S. No. 1340, on Map No. A-160 of Oneida County Survey Records, identifies meander corner being monumented with an iron pipe.

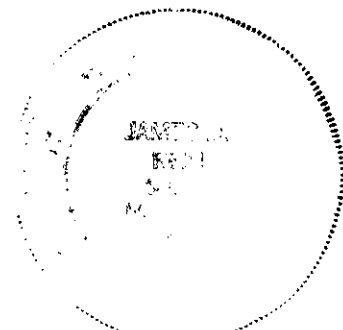
August 2nd, 1995: James D. Rein, R.L.S. No. 1234, recovered 1 1/4 inch dia. iron pipe near the easterly shore of Blue Lake. We replace it with a capped 2 inch dia. x 30 inch long flanged bottom aluminum monument. Set plastic sign post 3/4 foot West of corner and made ties to unmarked bearing trees and an iron pipe as shown in plan view.

(c)(d)(e) Plan view of corner with ties to at least 4 witness monuments. If in disagreement with previously established corner, show the distance between the two corners and also indicate the ties to the disputed corner.



(i) I, James D. Rein, Registered Land Surveyor No. 1234, hereby certify that the corner location on this record was determined by me or under my direction and control and that this U.S. Public Land Survey Monument Record is correct and complete to the best of my knowledge and belief.

James D. Rein Signature Date Sept. 26th, 1995



INDEX NO. V 9-10

3906280034