

U.S. PUBLIC LAND SURVEY MONUMENT RECORD

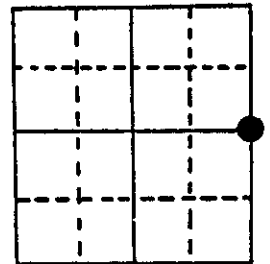
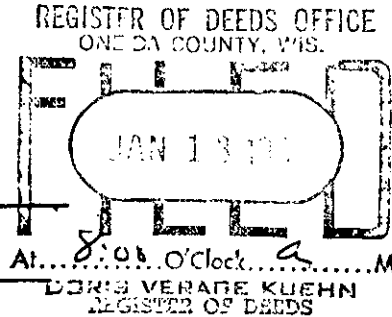
Note: This form is intended and designed to fulfill all requirements of Wisconsin Administrative Code, Chapter A-E 5.02, U.S. Public Land Survey Monument Record (3) (a) (b) (c) (d) (e) (f) (g) (h) (i). An additional sheet may be added if necessary to conform with said requirements.

(a) Corner location: Township 39 North

Range 6 East/West

Town/City/Village Minocqua

County Oneida



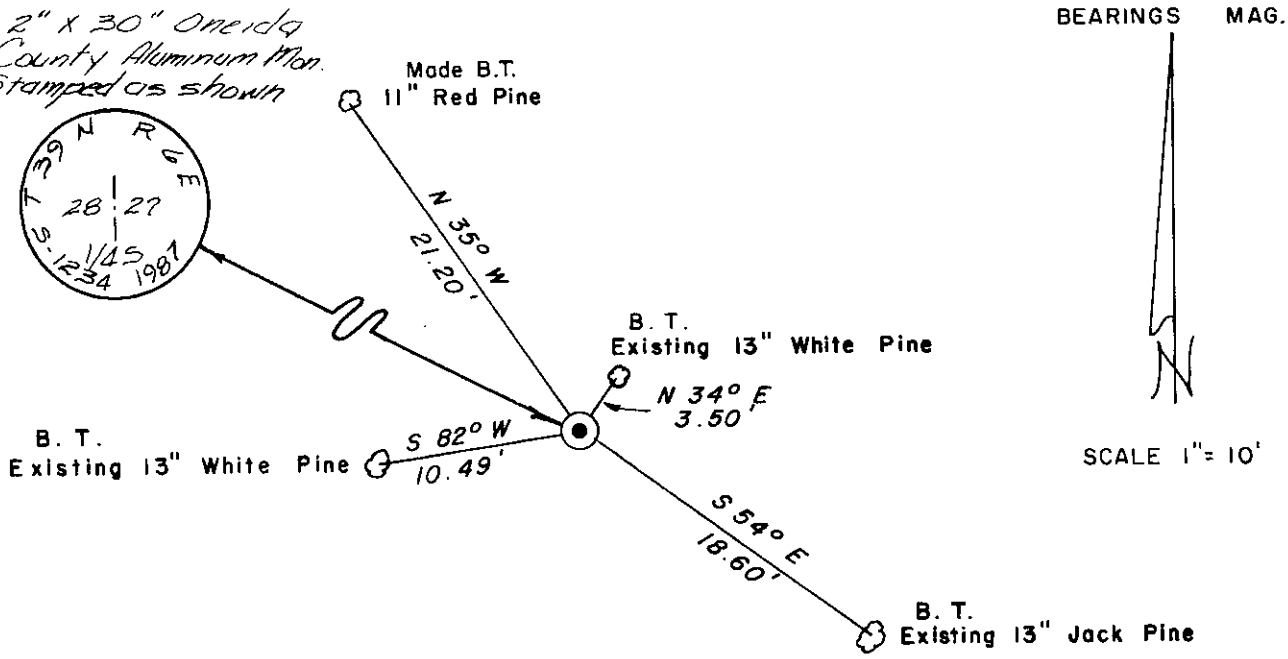
Section 28

(b) (f) (g) (h) Description of monument found at this corner and if it was accepted, state all evidence (material, testimonial, occupational, plats, records, other monuments) used as a basis for accepting. If not accepted or if nothing was found, state evidence used as basis for establishing location. If reestablished through lost corner proportionate methods, indicate all monuments, distances and directions used to establish.

October 1863 - Alexander Anderson, Deputy Surveyor - Set $\frac{1}{4}$ Section post. Original B.T.'s: Aspen 10" S53°E, 48 links; Aspen 8" S47°W, 17 links.
 Oct.-Nov. 1928 - H.C. Hall, Surveyor - Set post and iron pipe at proportionate distance between Section corners. New B.T.'s: Black Pine 3" S23°-20'W, 0.444 chains and Black Pine 2" S49°E, 0.285 chains.
 August 21st, 1987 - James D. Rein, RLS - Replaced a found 2" dia. iron pipe with a capped 2" dia. x 30" long flange bottom aluminum monument Corner located at northeast corner of old field. Old down fences west and south. Existing B.T.'s: 13" Jack Pine S54°E, 18.60 feet; 13" W. Pine S82°W, 10.49 feet; and 13" W. Pine N34°E, 3.50 feet. Made New B.T.: 11" Red Pine N35°W, 21.20 feet. Distance ties made to aluminum nail set in center of root crown on side of tree facing corner. Set plastic post 1.2 feet northwest of corner monument.

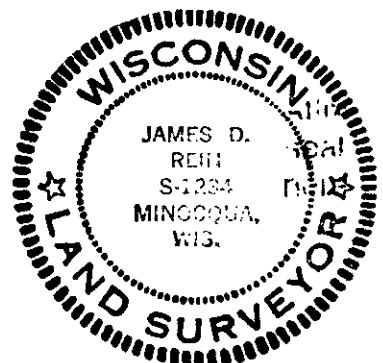
(c) (d) (e) Plan view of corner with ties to at least 4 witness monuments. If in disagreement with previously established corner, show the distances between the two corners and also indicate the ties to the disputed corner.

set 2" x 30" Oneida County Aluminum Mon. Stamped as shown



(i) I, James D. Rein, Registered Land Surveyor No. S-1234
 (type or print name) certify that the corner location on this record was determined by me or under my direction and control and that this U.S. Public Land Survey Monument Record is correct and complete to the best of my knowledge and belief.

James D. Rein Signature August 22nd, 1987 Date



Index No. I-13

3906282000

U.S. PUBLIC LAND SURVEY MONUMENT RECORD

REGISTER OF DEEDS OFFICE
ONEIDA COUNTY
FILED

OCT 26 2020

Note: This form is intended and designed to fulfill all requirements of the Wisconsin Administrative Code, Chapter A-E 7.08 U.S. Public Land Monument Record (3)(a)(b)(c)(d)(e)(f)(g)(h)(i). An additional sheet may be added if necessary to conform with said requirements.

KYLE J. FRANSON
REGISTER OF DEEDS

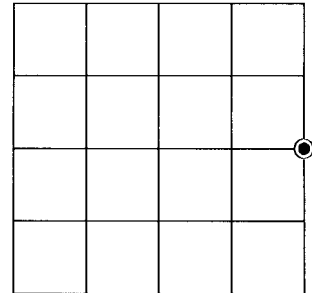
(a) CORNER LOCATION:

East Quarter Corner of Section 28
Township 39 North
Range 6 East
Town of Minocqua
County of Oneida

North:
East:
Datum:
GNSS Method:
GNSS Control:

(RECORDING AREA)

SECTION 28



(b) HISTORY OF ORIGINAL CORNER ESTABLISHMENT

Original Surveyor:
Date of Survey: Commenced
Completed
Original B.T.'S

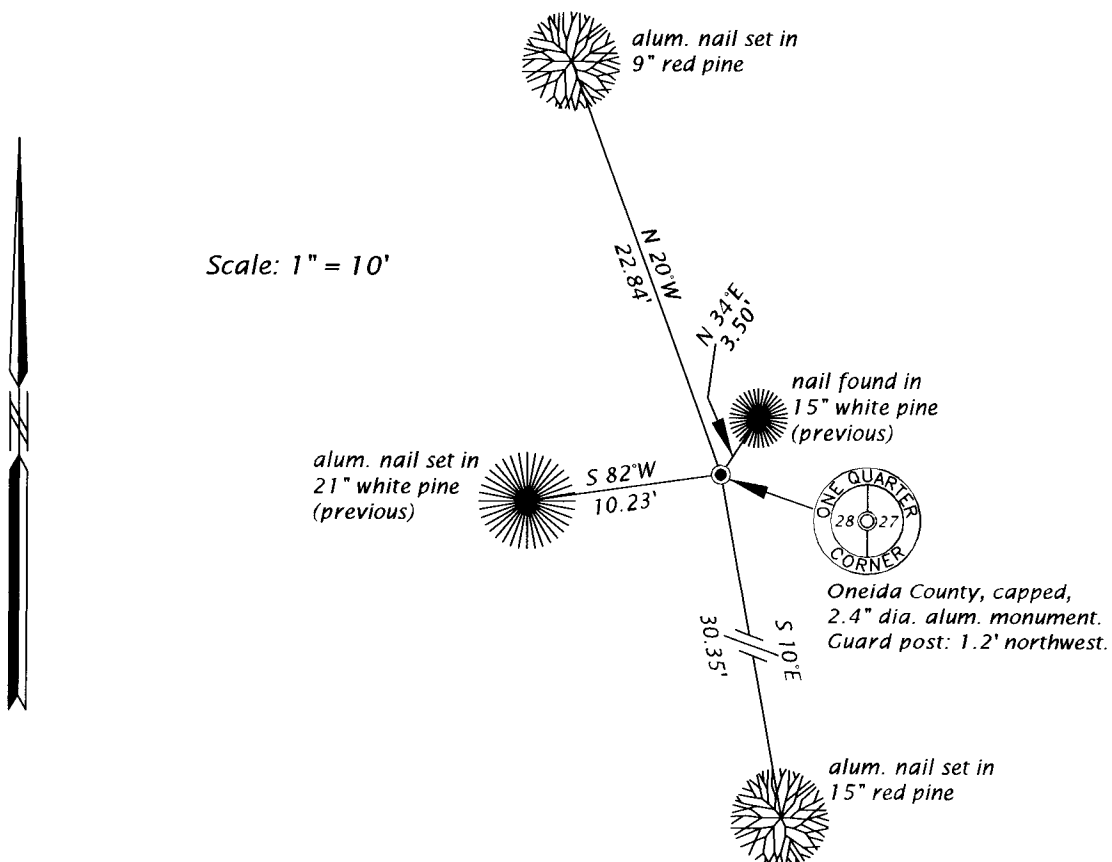
SEE PREVIOUS U.S.P.L.S. MONUMENT RECORD DATED AUGUST 22, 1987.

(f)(g)(h) DESCRIPTION OF MONUMENT FOUND AT THIS CORNER AND IF IT WAS ACCEPTED, STATE ALL EVIDENCE (MATERIAL, TESTIMONIAL, OCCUPATIONAL, PLATS, RECORD, OTHER MONUMENTS) USED AS A BASIS FOR ESTABLISHING LOCATION. IF NOT ACCEPTED OR IF NOTHING WAS FOUND, STATE EVIDENCE USED AS BASIS FOR ESTABLISHING LOCATION. IF REESTABLISHED THROUGH LOST CORNER PROPORTIONATE METHODS, INDICATE ALL MONUMENTS, DISTANCES AND DIRECTIONS USED TO ESTABLISH. INDICATE TYPE OF MONUMENT AND SIGN POST FOUND OR SET.

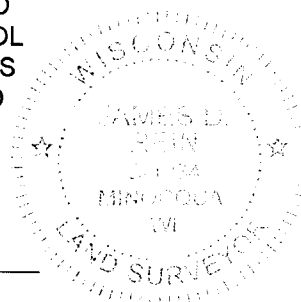
This is a perpetuation of a previous U.S.P.L.S. Monument Record by James D. Rein, RLS, dated August 22, 1987, and filed in the office of the Oneida County Register of Deeds. A complete history of the corner can be found on the previous monument record. I accept the previous location as a true and faithful perpetuation or reestablishment of the original corner location and further perpetuate it as follows.

August 31, 2020 - James D. Rein, P.L.S. No. S-1234, we found and I accepted the Oneida County capped aluminum monument I set in 1987. The northwesterly maple is now gone and the southeasterly jack pine is now dead - see below for updated witnesses.

(c)(d)(e) PLAN VIEW OF CORNER WITH TIES TO AT LEAST 4 WITNESS MONUMENTS. IF IN DISAGREEMENT WITH PREVIOUSLY ESTABLISHED CORNER, SHOW THE DISTANCE BETWEEN THE TWO CORNERS AND ALSO INDICATE THE TIES TO THE DISPUTED CORNER.



(i) I, JAMES D. REIN, PROFESSIONAL LAND SURVEYOR NO. S-1234 HEREBY CERTIFY THAT THE CORNER LOCATION ON THIS RECORD WAS DETERMINED BY ME OR UNDER MY DIRECTION AND CONTROL AND THAT THIS U.S. PUBLIC LAND SURVEY MONUMENT RECORD IS CORRECT AND COMPLETE TO THE BEST OF MY KNOWLEDGE AND BELIEF.



James D. Rein 10/16/20
SIGNATURE DATE

INDEX NO. T-13
3906282000