

U.S. PUBLIC LAND SURVEY MONUMENT RECORD

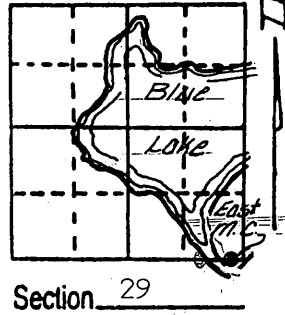
Note: This form is intended and designed to fulfill all requirements of Wisconsin Administrative Code, Chapter A-E 7.08 U.S. Public Land Survey Monument Record (3) (a) (b) (c) (d) (e) (f) (g) (h) (i). An additional sheet may be added if necessary to conform with said requirements.

(a) Corner location: Township 39 North
 Range 6 East/West

Town/City/Village Minocqua

County Oneida

Special Meander Corner on the east side of Blue Lake Island between Sections 29 and 32



(b) (f) (g) (h) Description of monument found at this corner and if it was accepted, state all evidence (material, testimonial, occupational, plats, records, other monuments) used as a basis for accepting. If not accepted or if nothing was found, state evidence used as basis for establishing location. If reestablished through lost corner proportionate methods, indicate all monuments, distances and directions used to establish.

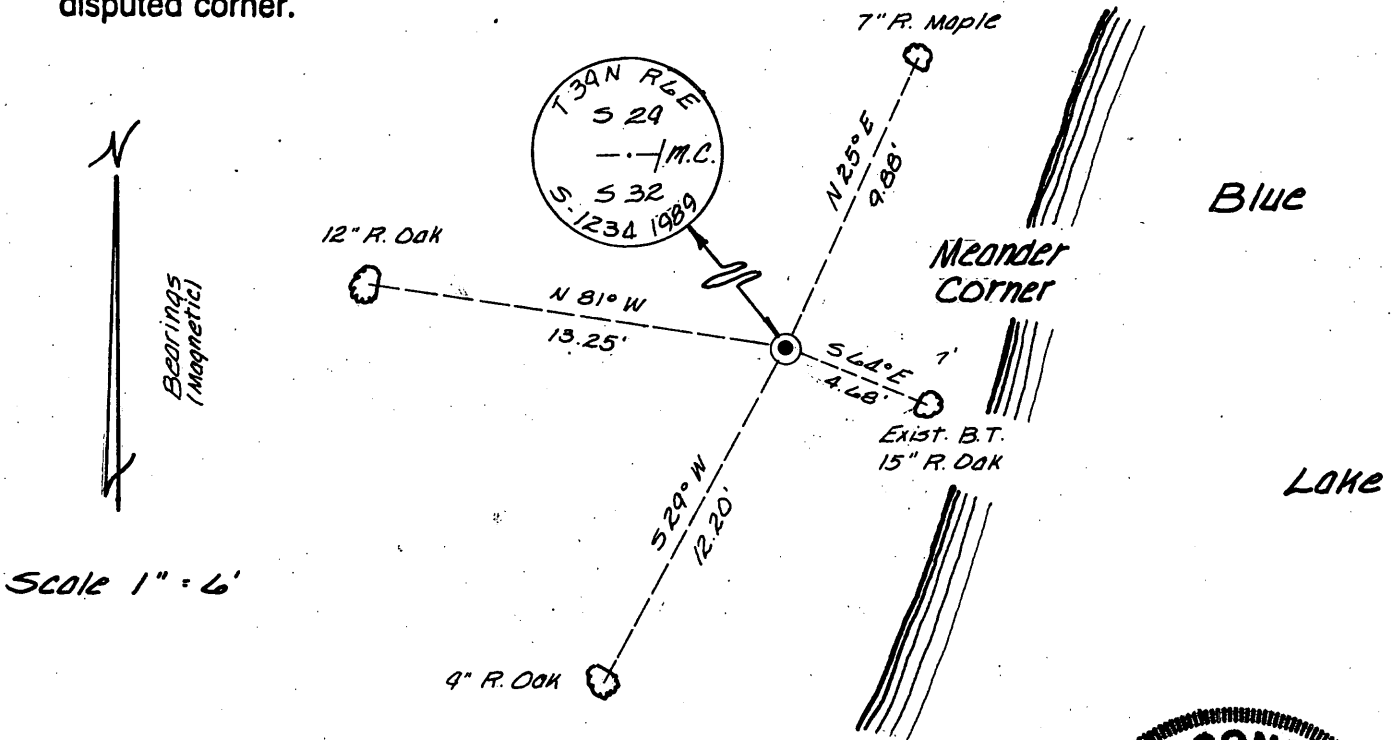
Feb. 21st, 1903 - Charles A. Nutter, U.S. Deputy Surveyor, set Cedar post for Special Meander Corner on east side of island. Original bearing trees: 10" Birch N 31°W, 6 links; 11" Birch, S 12°E, 30 links.

Oct.-Nov., 1929 - Harry C. Hall, Oneida County Surveyor, recovered original bearing tree stumps. Remonumented corner with an iron pipe and sawed post. New bearing trees: 6" Birch N 13°W, 21.5 feet; 4" B. Oak, S 50°E, 4.4 feet.

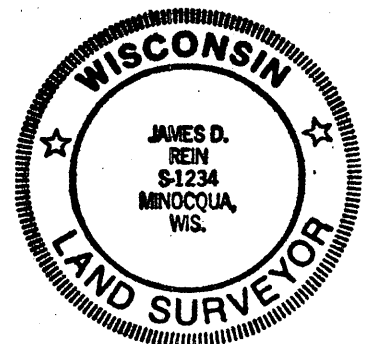
June, 1961 - William S. Cameron, Surveyor, on Northwoods Surveyor's Map No. 13-28-396 identifies corner as being monumented by an iron pipe, referenced by an 14" Oak S 54°E, 4.4 feet.

October 6th, 1989 - James D. Rein, R.L.S., recovered a 1½ dia. iron pipe referenced by a 15" R. Oak S64°E, 4.68 feet. Replaced the iron pipe with a capped 2" dia. x 30" long Oneida County aluminum monument. Set plastic marker stake next to corner monument and made additional reference ties as shown in plan view.

(c) (d) (e) Plan view of corner with ties to at least 4 witness monuments. If in disagreement with previously established corner, show the distances between the two corners and also indicate the ties to the disputed corner.



(i) I, James D. Rein, Registered Land Surveyor No. 1234
 (type or print name) certify that the corner location on this record was determined by me or under my direction and control and that this U.S. Public Land Survey Monument Record is correct and complete to the best of my knowledge and belief.



James D. Rein April 21st, 1990
 Signature Date

Index No. V 8-9

3906290001

REGISTER OF DEEDS OFFICE
ONEIDA COUNTY, WIS.

FILED
MAY 25 1990

At _____ O'Clock _____ M
THOMAS H. LEIGHTON
REGISTER OF DEEDS