

# U.S. PUBLIC LAND SURVEY MONUMENT RECORD

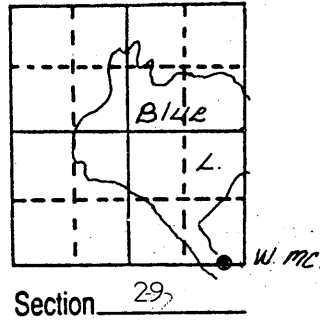
Note: This form is intended and designed to fulfill all requirements of Wisconsin Administrative Code, Chapter A-E 5.02, U.S. Public Land Survey Monument Record (3) (a) (b) (c) (d) (e) (f) (g) (h) (i). An additional sheet may be added if necessary to conform with said requirements.

(a) Corner location: Township 39 North

Range 6 East/West

Town/City/Village Minocqua

County Oneida



Special Meander Corner on west side of Blue Lake Island between Sections 29 and 32

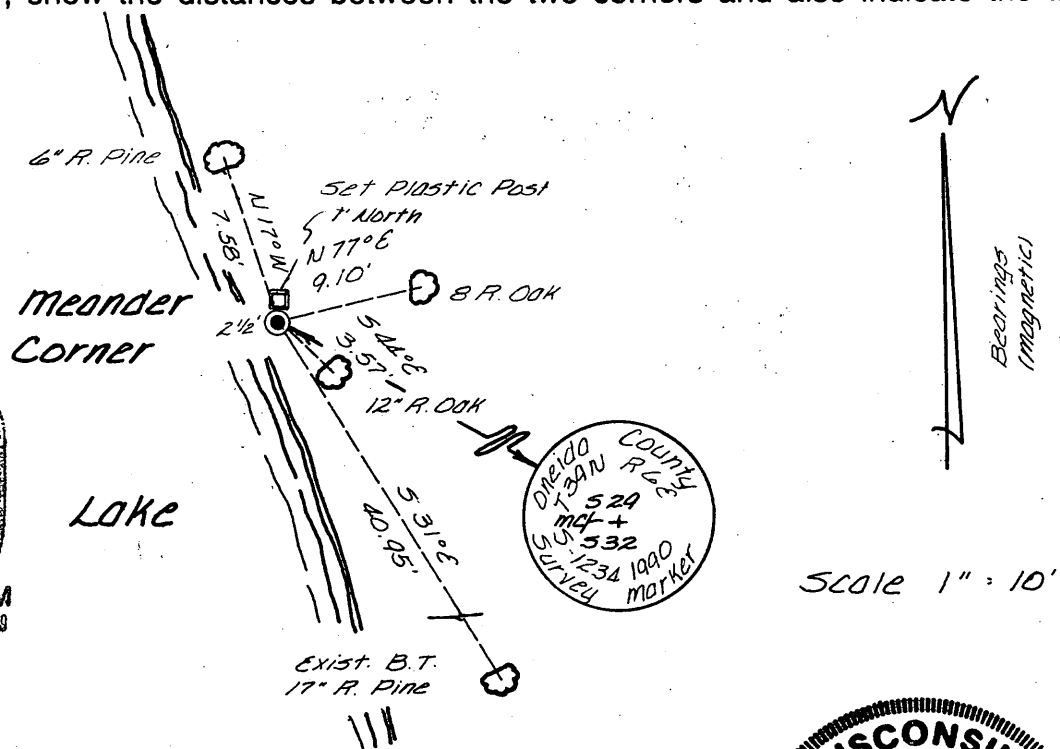
(b) (f) (g) (h) Description of monument found at this corner and if it was accepted, state all evidence (material, testimonial, occupational, plats, records, other monuments) used as a basis for accepting. If not accepted or if nothing was found, state evidence used as basis for establishing location. If reestablished through lost corner proportionate methods, indicate all monuments, distances and directions used to establish.

Feb. 21st, 1903 - Charles A. Nutter, U.S. Deputy Surveyor, set Cedar post for Special Meander Corner. Original bearing trees: 6" Spruce N55° E, 26 links; 5" Balsam S 13° E, 34 links.

Oct. - Nov., 1929 - Harry C. Hall, Oneida County Surveyor, set iron pipe in original stake hole and set a sawed post. Established new bearing trees: 9" Y. Pine S 29 3/4° E, 40.8 feet; 14" Y. Pine stump N 9 1/2° W, 34.4 feet.

March 23rd, 1990 - James D. Rein, R.L.S., recovered a 1 1/2" dia. iron pipe and old scribed wooden post. Replaced iron pipe with an aluminum capped 2" dia. x 30" long monument. See plan below for additional corner information and bearing tree reference ties.

(c) (d) (e) Plan view of corner with ties to at least 4 witness monuments. If in disagreement with previously established corner, show the distances between the two corners and also indicate the ties to the disputed corner.



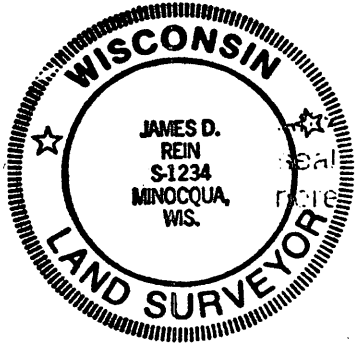
REGISTER OF DEEDS OFFICE  
ONEIDA COUNTY, WIS.  
**FILED**  
MAY 25 1990  
At \_\_\_\_\_ O'Clock \_\_\_\_\_ M  
**THOMAS H. LEIGHTON**  
REGISTER OF DEEDS

ONEIDA COUNTY  
T 39 N R 6 E  
S 29  
MAY 25 1990  
J.D. REIN  
SURVEYOR

Scale 1" = 10'

(i) I, James D. Rein, Reg. Land Surveyor No. 1234  
(type or print name) certify that the corner location on this record was determined by me or under my direction and control and that this U.S. Public Land Survey Monument Record is correct and complete to the best of my knowledge and belief.

James D. Rein April 21st, 1990  
Signature Date



Index No. V-8-9

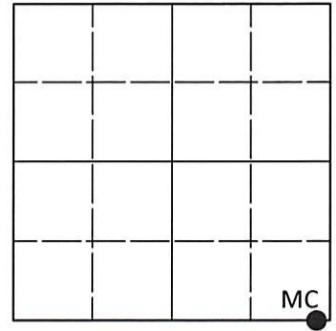
3906290002

# U.S. PUBLIC LAND SURVEY MONUMENT RECORD

Note: This form is intended and designed to fulfill all requirements of Wisconsin Administrative Code, Chapter A-E 7.08 U.S. Public Land Survey Monument Record (3)(a-i).

(a) CORNER LOCATION  
 Meander Cor. of Secs. 29 & 32  
 Township 39 North  
 Range 6 East of the 4th P.M.  
 Town of Minocqua  
 County of Oneida

WISCRS - Oneida County  
 N: 235,685.51 USft  
 E: 175,830.82 USft  
 Datum: NAD 83(2011) ep. 2010.00  
 GNSS Method: RTN - Offset  
 GNSS Control: WISCORS VRS



Sec. 29, T. 39 N., R. 6 E.

(b)(f)(g)(h) Description of monument found at this corner and if it was accepted, state all evidence (material, testimonial, occupational, plats, records, other monuments) used as a basis for accepting. If not accepted or if nothing was found, state evidence used as basis for establishing location. If re-established through lost corner proportionate methods, indicate all monuments, distances and directions used to establish. Indicate type of monument and sign post found or set.

*This record is a perpetuation of the following land corner document(s):*

*April 21, 1990: USPLS Monument Record by James D. Rein, filed in Oneida County*

*A complete history of the corner can be found on the previous land corner document(s). I accept the record activity as a true and faithful perpetuation or reestablishment of the original corner location and further perpetuate it as described below.*

*June 19, 2023: I found and accepted the record monument, a 2.4" diam. aluminum pipe, firmly set, with a 3.3" diam. Oneida Co. aluminum cap flush with the ground surface. All of the record bearing trees were found in good condition at record locations. I found or established accessories as indicated below. I found a white vinyl sign post bearing West, 1.8 ft.*

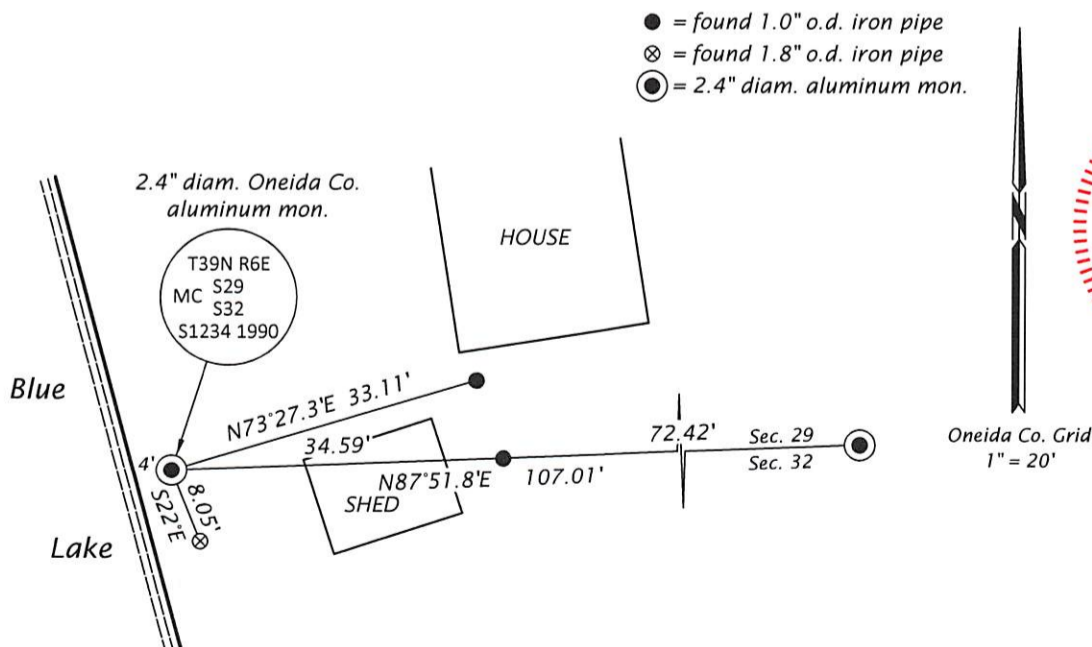
*The coordinate value shown has been determined by traversing from two or more GNSS offset points satisfying the accuracy requirements defined and qualified in the 2022 Oneida County Fee Schedule for USPLS Corners.*

**REGISTER OF DEEDS OFFICE  
 ONEIDA COUNTY  
 FILED**

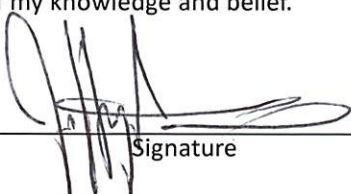
**JUL 06 2023**

KYLE J. FRANSON  
 REGISTER OF DEEDS

(c)(d)(e) Plan view of corner with ties to at least 4 witness monuments. If in disagreement with previously established corner, show the distances between the two corners and also indicate the ties to the disputed.



(i) I, Jeffrey W. Austin, Professional Land Surveyor No. S-1885, hereby certify that the corner location on this record was determined by me or under my direction and control and that this U.S. Public Land Survey Monument Record is correct and complete to the best of my knowledge and belief.

  
 Signature

JULY 1, 2023  
 Date