

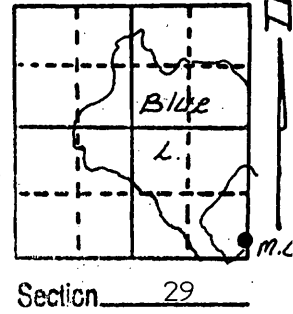
U.S. PUBLIC LAND SURVEY MONUMENT RECORD

Note: This form is intended and designed to fulfill all requirements of Wisconsin Administrative Code, Chapter A-E 7.08 U.S. Public Land Survey Monument Record (3) (a) (b) (c) (d) (e) (f) (g) (h) (i). An additional sheet may be added if necessary to conform with said requirements.

(a) Corner location: Township 39 North
 Range 6 East/West

Town/City/Village Minocqua

County Oneida



Special Meander Corner on south side of Blue Lake Island between Sections 28 and 29

(b) (f) (g) (h) Description of monument found at this corner and if it was accepted, state all evidence (material, testimonial, occupational, plats, records, other monuments) used as a basis for accepting. If not accepted or if nothing was found, state evidence used as basis for establishing location. If reestablished through lost corner proportionate methods, indicate all monuments, distances and directions used to establish.

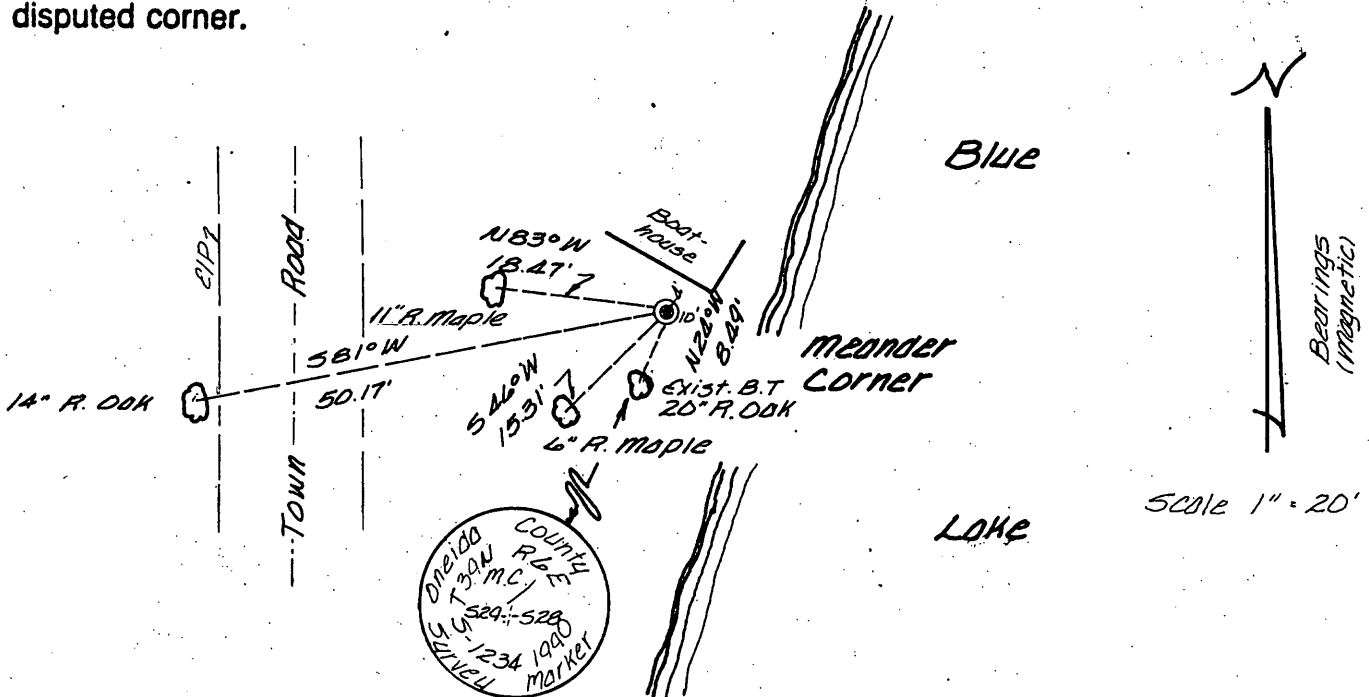
Feb. 21st, 1903 - Charles A. Nutter, U.S. Deputy Surveyor, set Cedar post for Special Meander Corner. Original bearing trees: 7' Hemlock, N 15°W, 29 links; 8" Birch S 48°W, 18 links.

Oct.-No., -1929 - Harry C. Hall, Oneida County Surveyor, set iron pipe for corner from the original bearing trees: Birch stub S 43°W, 11.9 feet and a Hemlock stump N 19°W, 19.1 feet. Made new bearing trees: 5" B. Oak S 24½°W, 8.2 feet and a 24" W. Pine N W, 38.9 feet.

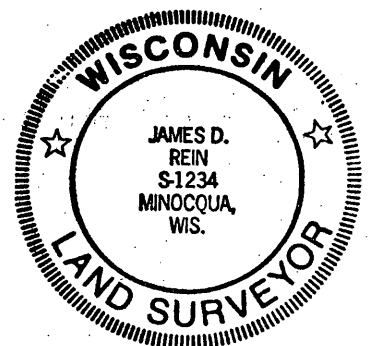
June, 1961 - William S. Cameron, Surveyor, on Northwoods Surveyor's Map No. 13-28-396 identifies corner as being monumented by an iron pipe and referenced by a 20" Oak S 24°W, 8.2 feet. Map shows corner relationship to existing Meander Corners on line between Sections 29 and 32 crossing Blue Lake Island.

March 23rd, 1990 - James D. Rein, RLS, monumented corner position with a capped 2" dia. x 30 long Oneida County aluminum monument using information shown on the Cameron map and verified by an existing 20" R. Oak S 24°E, 8.49 feet. See plan view below for additional reference tie information and reverse side of this form for method of corner establishment.

(c) (d) (e) Plan view of corner with ties to at least 4 witness monuments. If in disagreement with previously established corner, show the distances between the two corners and also indicate the ties to the disputed corner.



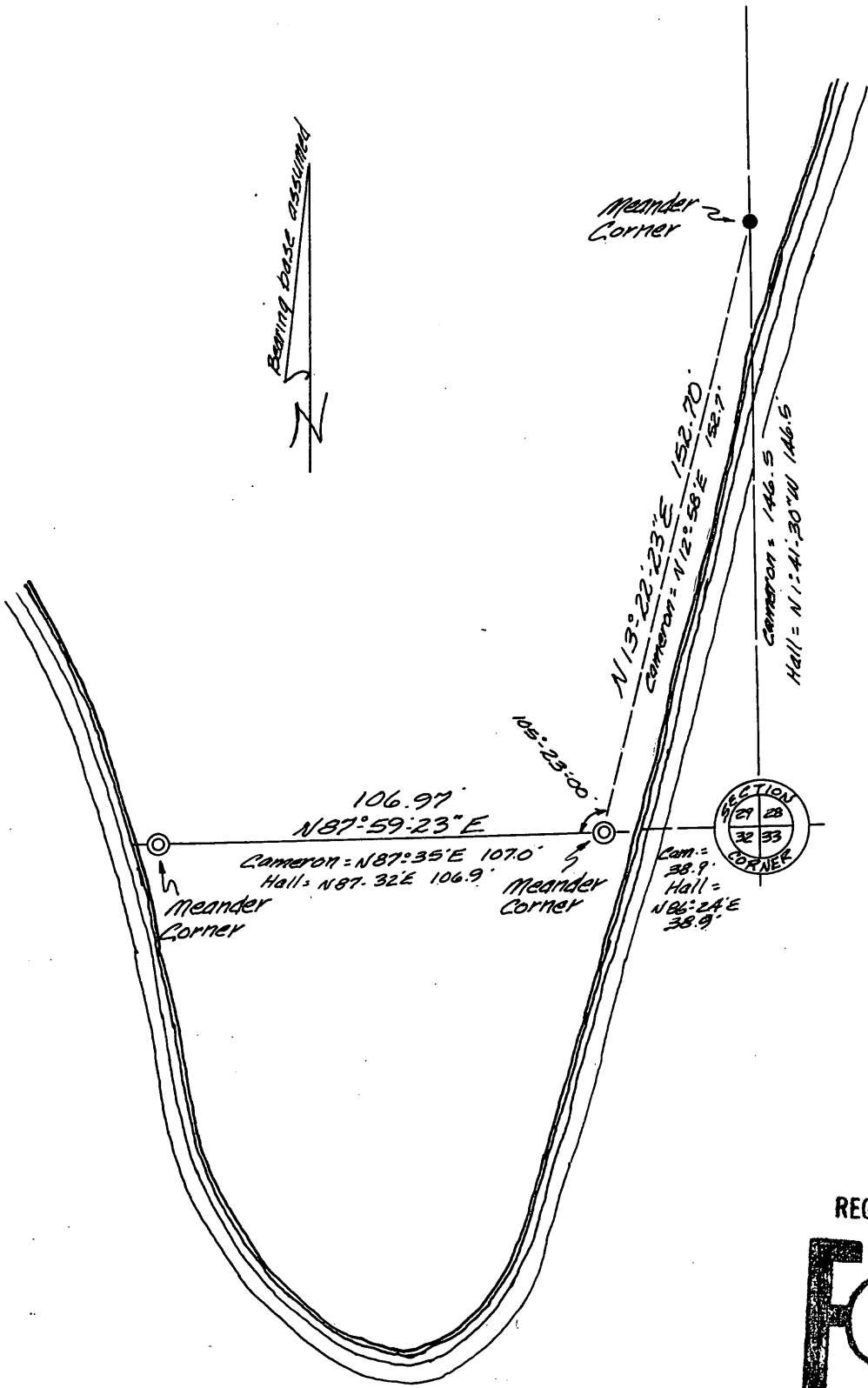
(i) I, James D. Rein, Registered Land Surveyor No. 1234
 (type or print name) certify that the corner location on this record was determined by me or under my direction and control and that this U.S. Public Land Survey Monument Record is correct and complete to the best of my knowledge and belief.



James D. Rein Signature
 April 21st, 1990 Date

Index No. U V -9

3906290200



REGISTER OF DEEDS OFFICE
ONEIDA COUNTY, WIS.

FILED

MAY 25 1990

At _____ O'Clock _____ M
THOMAS H. LEIGHTON
 REGISTER OF DEEDS