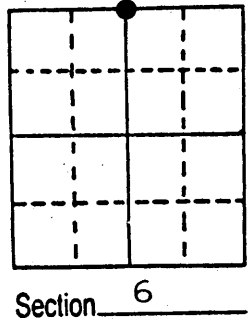


# U.S. PUBLIC LAND SURVEY MONUMENT RECORD

Note: This form is intended and designed to fulfill all requirements of Wisconsin Administrative Code, Chapter A-E 5.02, U.S. Public Land Survey Monument Record (3) (a) (b) (c) (d) (e) (f) (g) (h) (i). An additional sheet may be added if necessary to conform with said requirements.

(a) Corner location: Township 38 North  
 Range 6 East/West  
 Town/City/Village HAZELHURST  
 County ONEIDA

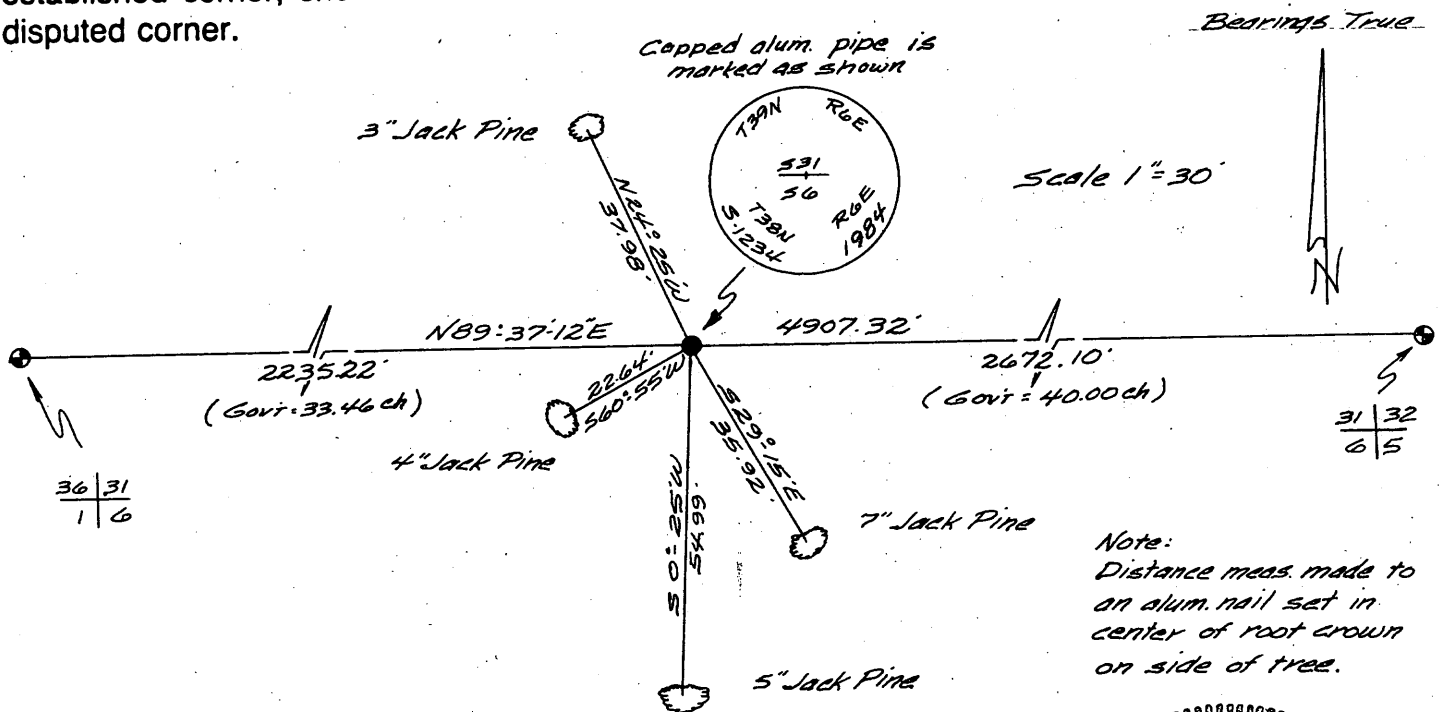


(b) (f) (g) (h) Description of monument found at this corner and if it was accepted, state all evidence (material, testimonial, occupational, plats, records, other monuments) used as a basis for accepting. If not accepted or if nothing was found, state evidence used as basis for establishing location. If reestablished through lost corner proportionate methods, indicate all monuments, distances and directions used to establish.

Sept. 20, 1860- Alfred Millard, Deputy Surveyor - Set 1/4 Section post.  
 Original bearing trees: Y. Pine 6" N50°W, 9 links  
 Y. Pine 14" S77°W, 52 lks.  
 June 23 1933- Ray H. Hall, Deputy County Surveyor - Fail to find North 1/4 S.

Dec. 18, 1984-James D. Rein, RLS - I was unable to find acceptable evidence of the original corner position. Thus at the computed proportionate distance set a capped 2" dia. x 30" long magnetic aluminum monument extending 2 inches above ground in a new pine slash. Set wood post Northeast, 1 1/2 feet from corner. Made bearing tree reference ties as shown below in plan view.

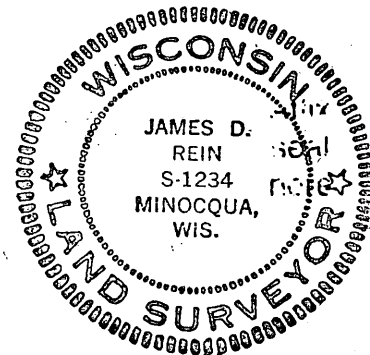
(c) (d) (e) Plan view of corner with ties to at least 4 witness monuments. If in disagreement with previously established corner, show the distances between the two corners and also indicate the ties to the disputed corner.



Note: Distance meas. made to an alum. nail set in center of root crown on side of tree.

(i) I, JAMES D. REIN, Reg. Land Surveyor No. S-1234  
 (type or print name) certify that the corner location on this record was determined by me or under my direction and control and that this U.S. Public Land Survey Monument Record is correct and complete to the best of my knowledge and belief.

James D Rein Jan. 31st, 1985  
 Signature Date



3906310020

Index No. A-3

# U.S. PUBLIC LAND SURVEY MONUMENT RECORD

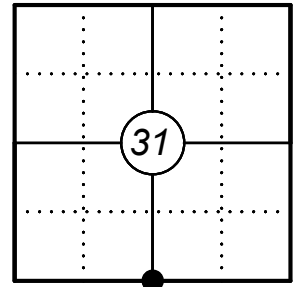
This form is intended and designed to fulfill all requirements of Wisconsin Administrative Code, Chapter A-E 7.08 U.S. Public Land Survey Monument Record (3) (a)(b)(c)(d)(e)(f)(g)(h)(i). An additional sheet may be added if necessary to confirm with said requirements.

Oneida County  
Land Information Office  
Filed  
**7/17/2025**

**(a) Corner Location:**

S 1/4 Corner Section 31  
Township 39 North  
Range 6 East  
Town of Minocqua  
County of Oneida

**Corner ID: 3906310020**



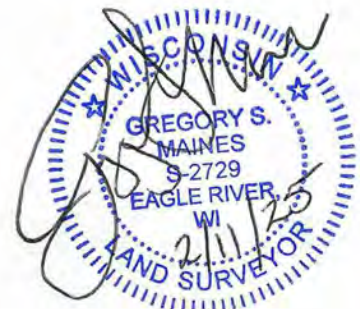
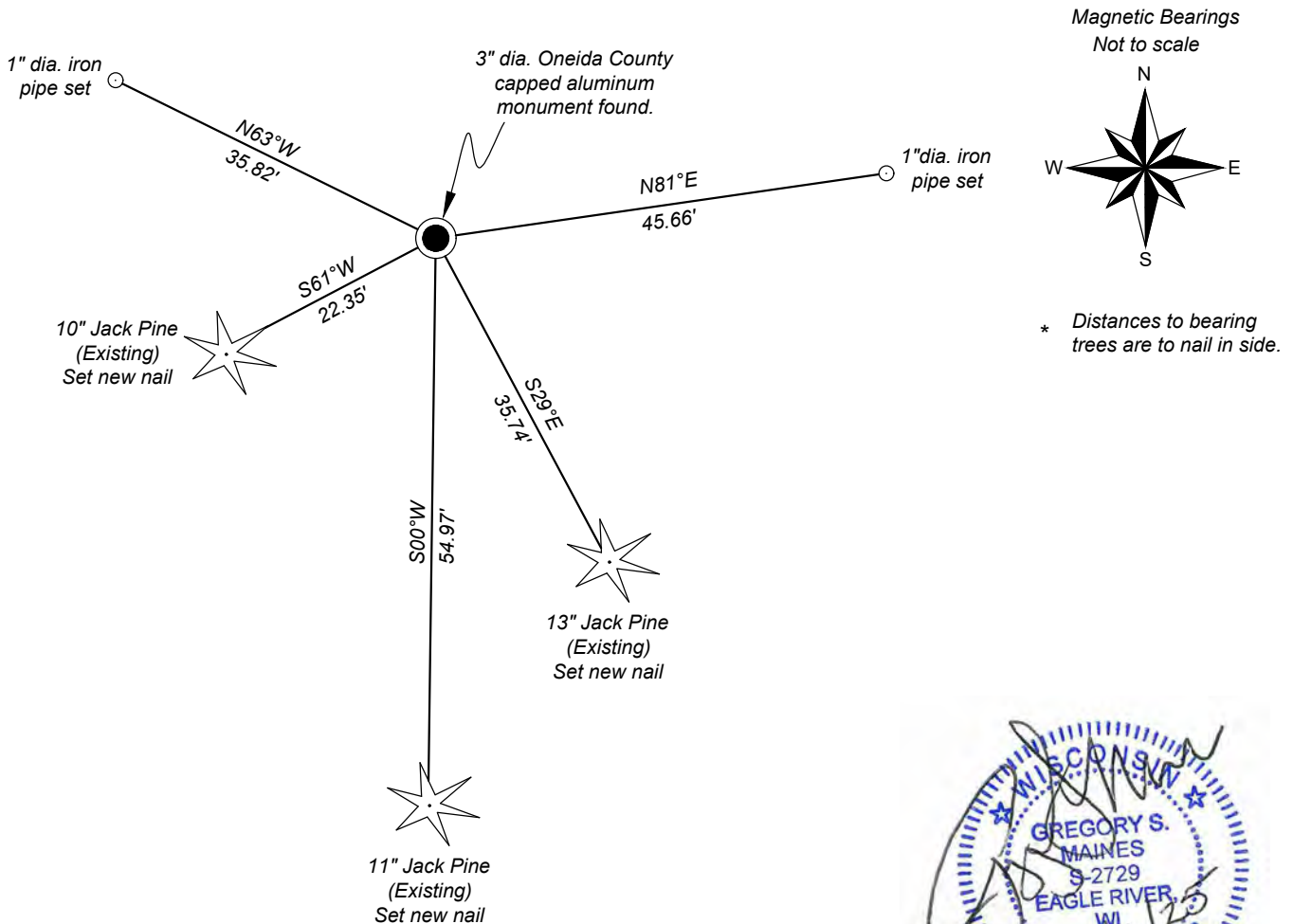
**(b) History of Original Corner:**

For corner history, see previous U.S. Public Land Survey Monument Record by James D. Rein, dated January 31, 1985.

**(f)(g)(h) Description of monument found at this corner and if it was accepted, state all evidence (material, testimonial, occupational, plats, records, other monuments) used as a basis for establishing location. If reestablishing through lost corner proportionate methods, indicate all monuments, distances, and directions used to establish. Indicate type of monument and sign post found or set.**

06/21/2024 - I found and accepted a 3" dia. Oneida County capped aluminum monument at the corner location. I set two iron pipes and used three existing bearing trees to witness the corner as shown below.

**(c)(d)(e) Plan view of corner with ties to at least four witnesses. If in disagreement with previously established corner, show the distances between the two corners and also indicate the tie to the disputed corner.**



**Certification**

I, Gregory S. Maines, Professional Land Surveyor No. 2729, hereby certify that the corner location on this record was referenced by me or under my direction and control and that this U.S. Public Land Survey Monument Record is complete to the best of my knowledge and belief. REF: 2024152

Index No.: