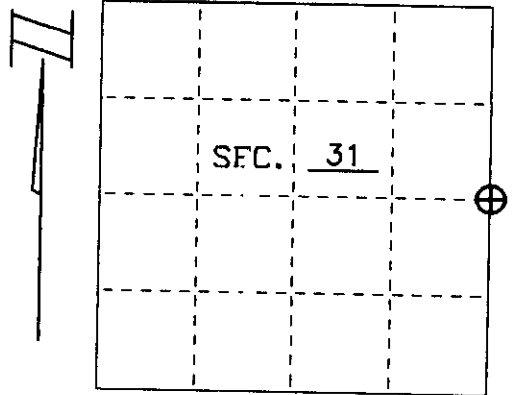


**U. S. PUBLIC LAND SURVEY MONUMENT RECORD**

Note: This form is intended and designed to fulfill all requirements of Wisconsin Administrative Code, Chapter A-E 7.08 U.S. Public Land Survey Monument Record (3)(a)(b)(c)(d)(e)(f)(g)(h)(i). An additional sheet may be added if necessary to conform with said requirements.

(a) CORNER LOCATION Township 39 North  
Range 6 East

Town of Minocqua  
County of Oneida, State of Wisconsin



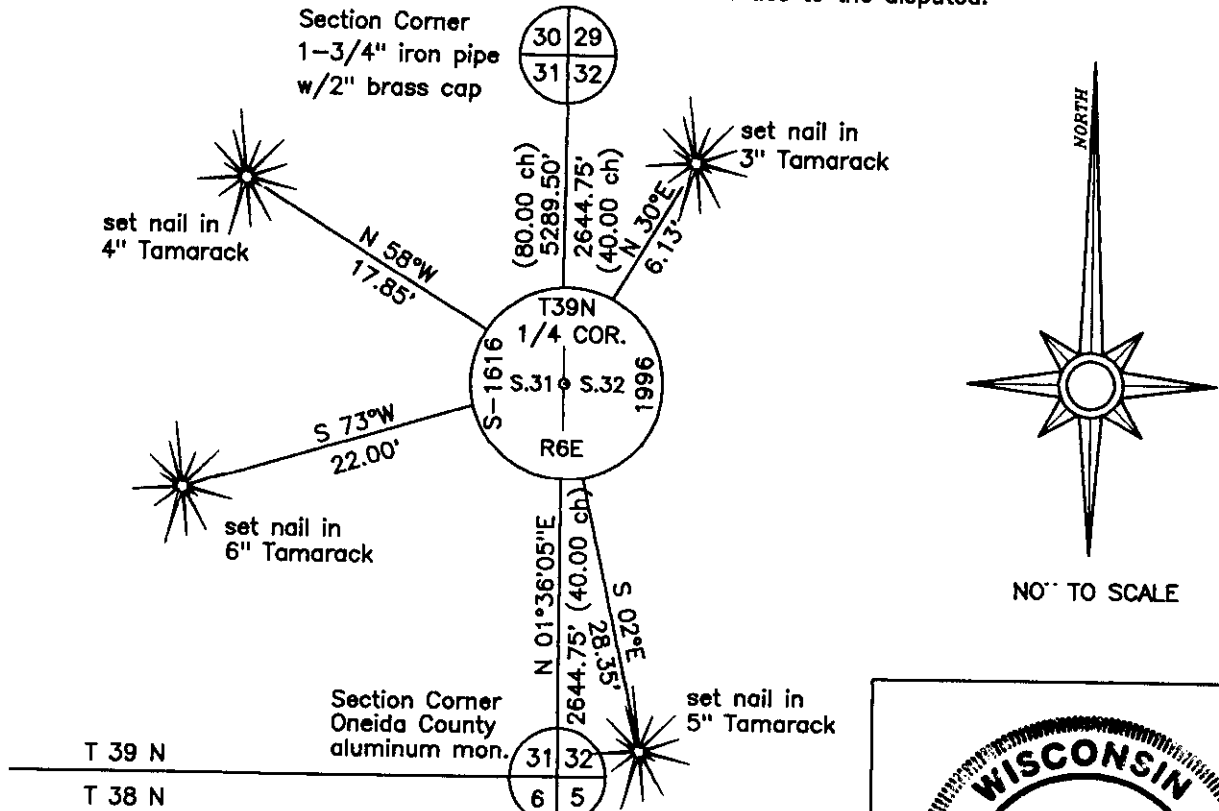
(b)(f)(g)(h) Description of monument found at this corner and if it was accepted, state all evidence (material, testimonial, occupational, plats, records, other monuments) used as a basis for accepting. If not accepted or if nothing was found, state evidence used as basis for establishing location. If reestablished through lost corner proportionate methods, indicate all monuments, distances and directions used to establish. Indicate type of monument and sign post found or set.

Oct. 15-23, 1863 Alexander Anderson, Deputy Surveyor

Original Bearing Trees:  
Spruce 5" S 54°E 10lks  
Tamarack 5" N 07°W 28lks

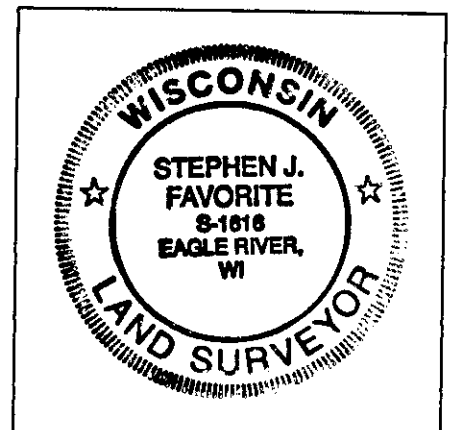
Nov. 20, 1996 I found no evidence of the original corner or bearing trees. I established corner position by single proportionate method between opposing section corners. The section corners coordinate positions were measured by GPS and the coordinates were provided to us by Oneida County. I bark scribed the bearing trees as shown below and set carsonite sign post South 1 foot .

(c)(d)(e) Plan view of corner with ties to at least 4 witness monuments. If in disagreement with previously established corner, show the distances between the two corners and also indicate the ties to the disputed.



(i) I, Stephen J. Favorite, hereby certify that the corner location on this record was determined by me or under my direction and control and that this U.S. Public Land Survey Monument Record is correct and complete to the best of my knowledge and belief.

Stephen J. Favorite 12/9/96  
Stephen J. Favorite Date  
R.L.S. #S-1616



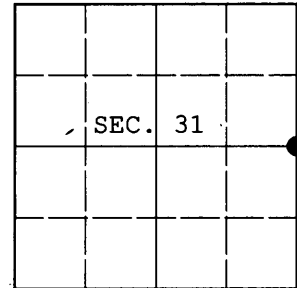
INDEX NO. X-5

3906312000

**U.S. PUBLIC LAND SURVEY MONUMENT RECORD**

Note: This form is intended and designed to fulfill all requirements of Wisconsin Administrative Code, Chapter A-E 7.08 U.S. Public Land Survey Monument Record (3) (a) (b) (c) (d) (e) (f) (g) (h) (i). An additional sheet may be added if necessary to conform with said requirements.

(a) CORNER LOCATION: Plane Coordinates  
 1/4 Cor. of Secs. 31 & 32 N:  
 Township 39 North E:  
 Range 6 East of the 4th P.M. Datum:  
 Town of Minocqua County of Oneida



(b) HISTORY OF ORIGINAL CORNER ESTABLISHMENT

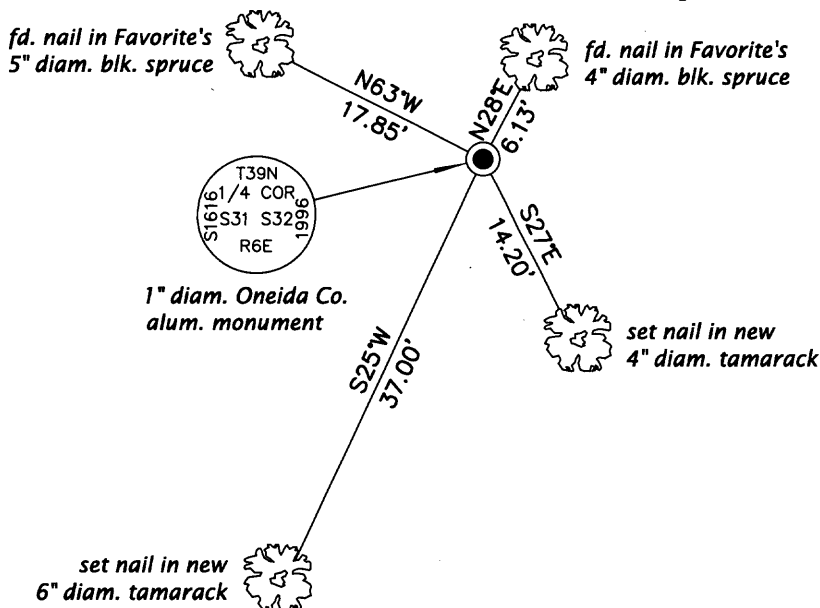
Original Surveyor: Alexander Anderson Original Accessories:  
 Date of Survey: Commenced: Oct. 13, 1863 spruce 5" S54°E, 10 lks.  
 Completed: Oct. 23, 1863 tamarack 5" N7°W, 28 lks.

(b) (f) (g) (h) Description of monument found at this corner and if it was accepted, state all evidence (material, testimonial, occupational, plats, records, other monuments) used as a basis for accepting. If not accepted or if nothing was found, state evidence used as basis for establishing location. If re-established through lost corner proportionate methods, indicate all monuments, distances and directions used to establish. Indicate type of monument and sign post found or set.

NOTE: This is a perpetuation of a previous USPLS Monument Record by Stephen J. Favorite, RLS dated December 9, 1996 and filed in the office of the Oneida County Register of Deeds. A complete history of the corner can be found on the previous monument record. I accept the previous location as a true and faithful perpetuation or reestablishment of the original corner location and further perpetuate it as follows.

July 22, 2012: I found and accepted Favorite's monument, a 1" diam. aluminum pipe with 2" diam. Oneida Co. aluminum cap flush with the bog surface. Favorite's southerly trees are standing dead. I found or established accessories as shown below and found a white plastic sign post bearing South, 1 ft. dist.

(c) (d) (e) Plan view of corner with ties to at least 4 witness monuments. If in disagreement with previously established corner, show the distances between the two corners and also indicate the ties to the disputed.



REGISTER OF DEEDS OFFICE  
 ONEIDA COUNTY  
**FILED**

**MAR 11 2013**

AT \_\_\_\_\_ O'CLOCK \_\_\_\_\_ M  
 KYLE J. FRANSON  
 REGISTER OF DEEDS

(i) I, Jeffrey W. Austin, Registered Land Surveyor No. S-1885, hereby certify that the corner location on this record was determined by me or under my direction and control and that this U.S. Public Land Survey Monument Record is correct and complete to the best of my knowledge and belief.

Signature

**FEB. 27, 2013**

Date

3906312000 (INDEX NO. X-5)