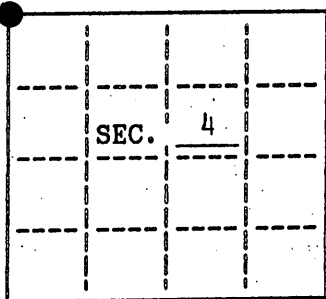


**U.S. PUBLIC LAND SURVEY MONUMENT RECORD**

Note: This form is intended and designed to fulfill all requirements of Wisconsin Administrative Code, Chapter A-8 7.08 U.S. Public Land Survey Monument Record (3)(a)(b)(c)(d)(e)(f)(g)(h)(i). An additional sheet may be added if necessary to conform with said requirements.

(a) CORNER LOCATION: State Plane Coordinates  
 NW corner of Sec. 4 X \_\_\_\_\_  
 Township 38 North Y \_\_\_\_\_  
 Range 6 East Datum Base \_\_\_\_\_  
 Town/City Hazelhurst County of Oneida



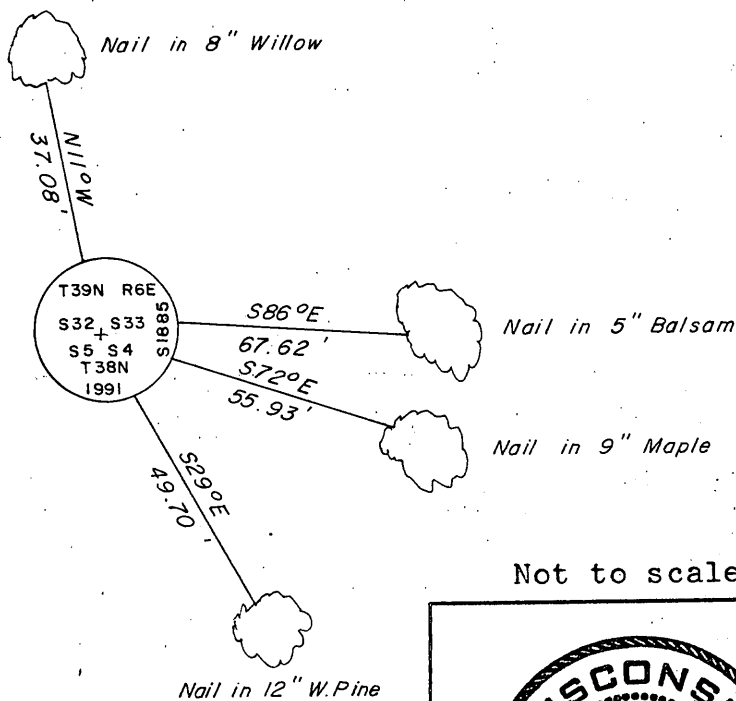
(b) HISTORY OF ORIGINAL CORNER ESTABLISHMENT  
 Original Surveyor: Alfred Millard Original B.T.'S  
 Date of Survey: Commenced Sept. 1860 Tamarac 5 N56°W, 23 lks.  
 Completed Sept. 1860 Tamarac 5 N48°E, 43 lks.  
 Tamarac 6 S43°E, 79 lks.  
 No other tree near.

(b)(f)(g)(h) Description of monument found at this corner and if it was accepted, state all evidence (material, testimonial, occupational, plats, records, other monuments) used as a basis for accepting. If not accepted or if nothing was found, state evidence used as basis for establishing location. If reestablished through lost corner proportionate methods, indicate all monuments, distances and directions used to establish. Indicate type of monument and sign post found or set.

See reverse...

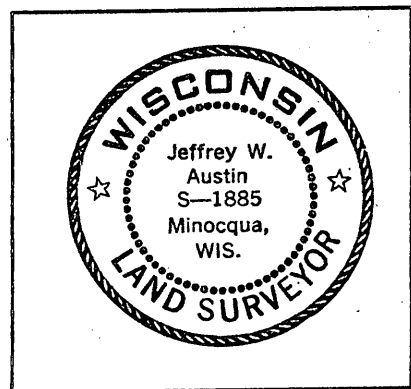
(c)(d)(e) Plan view of corner with ties to at least 4 witness monuments. If in disagreement with previously established corner, show the distances between the two corners and also indicate the ties to the disputed.

REGISTER OF DEEDS OFFICE  
 ONEIDA COUNTY, WIS.  
**FILED**  
 SEP 16 1991  
 At \_\_\_\_\_ O'Clock \_\_\_\_\_ M  
**THOMAS H. LEIGHTON**  
 REGISTER OF DEEDS



(i) I, Jeffrey W. Austin, Registered Land Surveyor hereby certify that the corner location on this record was determined by me or under my direction and control and that this U.S. Public Land Survey Monument Record is correct and complete to the best of my knowledge and belief.

Signature [Handwritten Signature] Date 9-12-1991



INDEX NO. A-9

3906320000

---

May 23, 1978: Plat of Timber Ridge III by Gerald Inman, wood post.

September 11, 1991: I found and accepted a 5" dia. wood post. I replaced this post with a 1" dia. 72" long aluminum pipe with a 2-1/2" dia. Oneida Co. aluminum cap set 18" above the ground and marked as shown on the reverse side of this record. I found the following witnesses: W.Pine standing dead N32°E, 34.0 feet; (Millard) Tamarack stump N50°E, 28.4 feet; (Millard) Tamarack stump S40°E, 53.0 feet; (Millard) Tamarack stump N59°W, 14.8 feet. I established the following witnesses: set nail in Balsam 5" S86°E, 67.62 feet; set nail in Maple 9" S72°E, 55.93 feet; set nail in W.Pine 12" S29°E, 49.70 feet; set nail in Willow 8" N11°W, 37.08 feet; set plastic sign post Northeast, 1-1/2 feet.