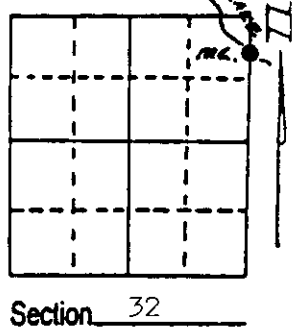


U.S. PUBLIC LAND SURVEY MONUMENT RECORD

Note: This form is intended and designed to fulfill all requirements of Wisconsin Administrative Code, Chapter A-E 7.08 U.S. Public Land Survey Monument Record (3) (a) (b) (c) (d) (e) (f) (g) (h) (i). An additional sheet may be added if necessary to conform with said requirements.

(a) Corner location: Township 37⁹ North
 Range 6 East/West

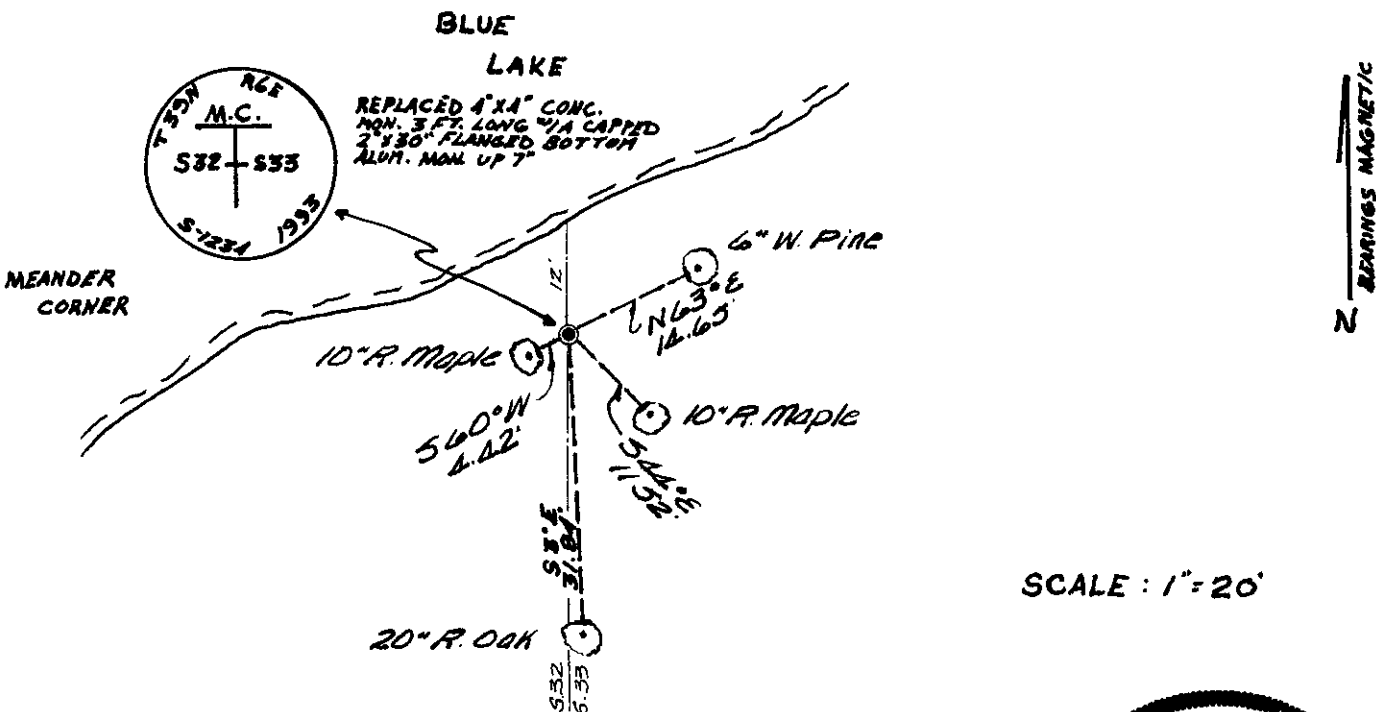
Town/City/Village Minocqua
 County Oneida



(b) (f) (g) (h) Description of monument found at this corner and if it was accepted, state all evidence (material, testimonial, occupational, plats, records, other monuments) used as a basis for accepting. If not accepted or if nothing was found, state evidence used as basis for establishing location. If reestablished through lost corner proportionate methods, indicate all monuments, distances and directions used to establish. Indicate type of monument found or set and sign post.

Oct. 1863 - Alexander Anderson, Deputy Surveyor, set Meander Corner witnessed by two bearing trees: a 7" Birch bearing S17°W, 52 links; and a 18" Y. Pine bearing S8°E, 13 links.
 Feb. 21st, 1903 - Charles Nutter, U.S. Deputy Surveyor, recovered the original Yellow Pine bearing tree in good condition, the other witness tree had been destroyed. He remonumented the meander corner as follows; "with instrument at the existing witness tree, I lay off an angle N8°W, 13 links, and set cedar post 3 feet long 4 inches square, 24 inches in ground". New witness tree is a Hemlock 8" in dia., bearing S26°W, 25 links.
 April 2nd, 1953 - E. F. Kowalke, Surveyor Field Book No. 11, page 19 identifies the corner position being monumented with a concrete monument.
 June 11th, 1993 - James D. Rein, Registered Land Surveyor, recovered a 4" x 4" concrete monument. Replaced the concrete monument with a capped 2" dia. X 30" long flange bottom aluminum monument. A 1" diameter iron pipe protruding 4" above ground bears South 0.45 feet. Made new reference ties to unmarked bearing trees as shown in plan view. I do set county sign post because the corner monument is near beach area of summer cottages.

(c) (d) (e) Plan view of corner with ties to at least 4 witness monuments. If in disagreement with previously established corner, show the distances between the two corners and also indicate the ties to the disputed corner.



(i) I, James D. Rein, Registered Land Surveyor No. 1234
 (type or print name) certify that the corner location on this record was determined by me or under my direction and control and that this U.S. Public Land Survey Monument Record is correct and complete to the best of my knowledge and belief.

James D. Rein Signature
 June 11th, 1993 Date



Index No. V, W-9.

Stamp
 3906323900