

CERTIFIED LAND CORNER RESTORATION

State of Wisconsin

County of Oneida

ss.

I, Gerald B. Inman, do hereby certify that on the 12th day of June, 1981, I found evidence of the Southeast section corner of Section 33 Township 39 N, Range 6E, Fourth Principal Meridian, as described hereon; and that from this evidence I established a new monument and accessories as described hereon to perpetuate the original location of this corner.

Description of original monument and accessories and subsequent restorations:

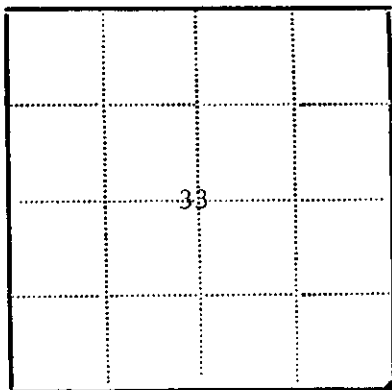
- Wood Post
7" Tamarack, N21°W, 20 links
6" Spruce, N31°E, 29 links

Description of corner evidence found:

2" capped iron pipe

Description of monument and accessories established to perpetuate the location of this corner:

- 2" capped iron pipe
1-1/4" iron rod, N60°46'05"W, 165.68 feet
1-1/4" iron rod, N21°51'32"W, 175.77 feet
1" iron pipe, N89°38'25"E, 60.00 feet



Legend: Circle - Corner monument restored; Square -

Resident witnesses Robert W. Conner, Jr.

Dated at Minocqua Wisconsin, this 12th day of June 1981.

Signature of Gerald B. Inman, Title R.L.S. (County Surveyor, Registered Land Surveyor, or other duly authorized official)

Surveyors Registration No. S-891

Office of Registrar of Deeds, County of Oneida

I hereby certify that the within instrument was filed in this office for record on the 12 day of June 1986, and was filed in Book No. Page No. of County Records.

Signature of Registrar of Deeds, Title Deputy

Township, Range, Section, Index No., Page No.

U.S. PUBLIC LAND SURVEY MONUMENT RECORD

REGISTER OF DEEDS OFFICE
ONEIDA COUNTY
FILED

FEB 17 2022

Note: This form is intended and designed to fulfill all requirements of the Wisconsin Administrative Code, Chapter A-E 7.08 U.S. Public Land Monument Record (3)(a)(b)(c)(d)(e)(f)(g)(h)(i). An additional sheet may be added if necessary to conform with said requirements.

KYLE J. FRANSON
REGISTER OF DEEDS

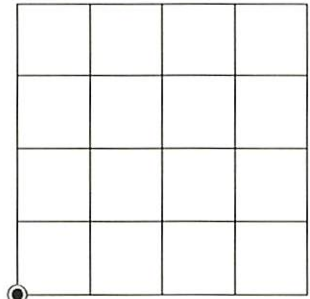
(a) CORNER LOCATION:

Southwest Corner of Section 34
Township 39 North
Range 6 East
Town of Minocqua
County of Oneida

North:
East:
Datum:
GNSS Method:
GNSS Control:

(RECORDING AREA)

SECTION 34



(b) HISTORY OF ORIGINAL CORNER ESTABLISHMENT

Original Surveyor:
Date of Survey: Commenced
Completed
Original B.T.'S

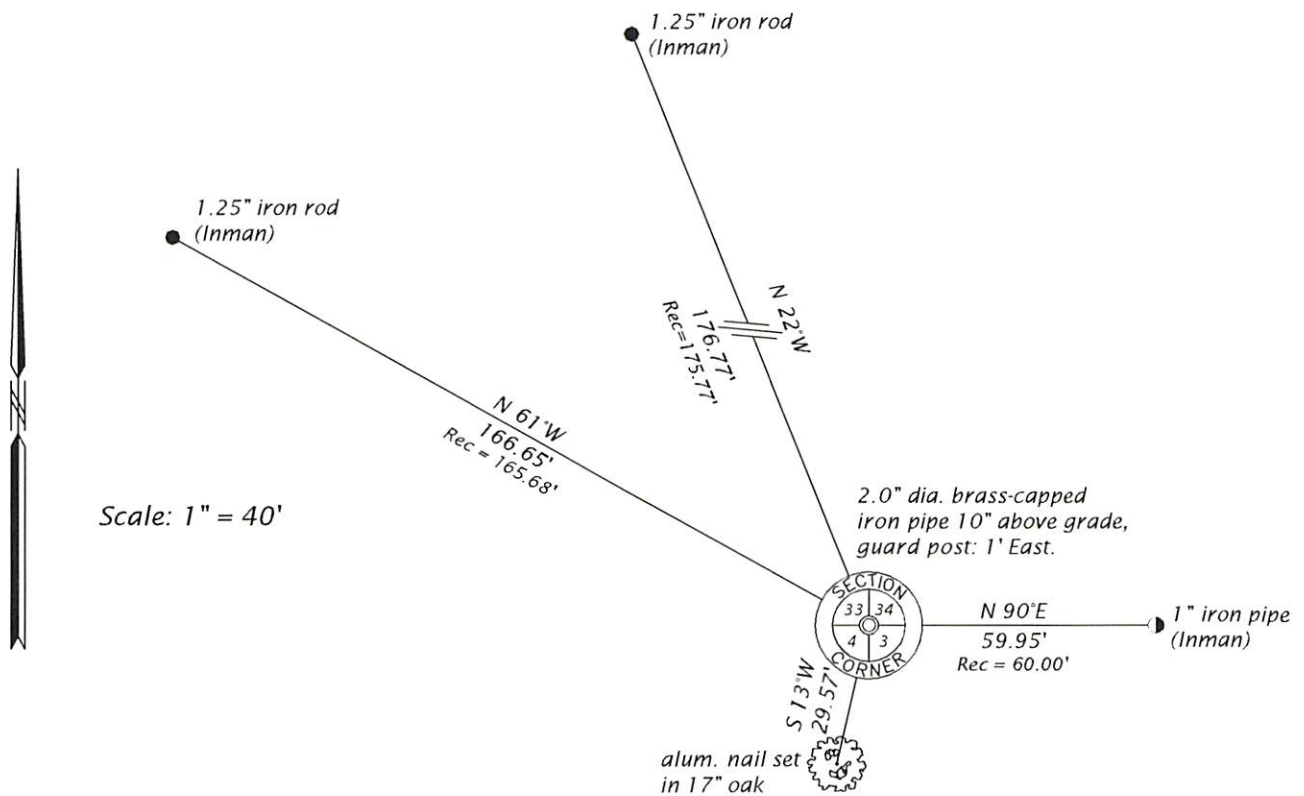
SEE PREVIOUS U.S.P.L.S. MONUMENT
RECORD FILED JUNE 12, 1986.

(f)(g)(h) DESCRIPTION OF MONUMENT FOUND AT THIS CORNER AND IF IT WAS ACCEPTED, STATE ALL EVIDENCE (MATERIAL, TESTIMONIAL, OCCUPATIONAL, PLATS, RECORD, OTHER MONUMENTS) USED AS A BASIS FOR ESTABLISHING LOCATION. IF NOT ACCEPTED OR IF NOTHING WAS FOUND, STATE EVIDENCE USED AS BASIS FOR ESTABLISHING LOCATION. IF REESTABLISHED THROUGH LOST CORNER PROPORTIONATE METHODS, INDICATE ALL MONUMENTS, DISTANCES AND DIRECTIONS USED TO ESTABLISH. INDICATE TYPE OF MONUMENT AND SIGN POST FOUND OR SET.

This is a perpetuation of a previous U.S.P.L.S. Monument Record by Gerald B. Inman, RLS, filed June 12, 1986, and filed in the office of the Oneida County Register of Deeds. A complete history of the corner can be found on the previous monument record. I accept the previous location as a true and faithful perpetuation or reestablishment of the original corner location and further perpetuate it as follows.

June 25, 2020, James D. Rein, P.L.S. No. S-1234, we found, and I accepted the 2" brass-capped iron pipe shown on the previous monument record by Inman. We recovered his three reference monuments and tied the corner to an additional bearing tree - see below for updated witnesses.

(c)(d)(e) PLAN VIEW OF CORNER WITH TIES TO AT LEAST 4 WITNESS MONUMENTS. IF IN DISAGREEMENT WITH PREVIOUSLY ESTABLISHED CORNER, SHOW THE DISTANCE BETWEEN THE TWO CORNERS AND ALSO INDICATE THE TIES TO THE DISPUTED CORNER.



(i) I, JAMES D. REIN, PROFESSIONAL LAND SURVEYOR NO. S-1234 HEREBY CERTIFY THAT THE CORNER LOCATION ON THIS RECORD WAS DETERMINED BY ME OR UNDER MY DIRECTION AND CONTROL AND THAT THIS U.S. PUBLIC LAND SURVEY MONUMENT RECORD IS CORRECT AND COMPLETE TO THE BEST OF MY KNOWLEDGE AND BELIEF.



James D. Rein
SIGNATURE DATE 2-14-22

INDEX NO. Z - 13
3906330000