

# U.S. PUBLIC LAND SURVEY MONUMENT RECORD

REGISTER OF DEEDS OFFICE  
ONEIDA COUNTY  
FILED

JUN 01 2017

Note: This form is intended and designed to fulfill all requirements of the Wisconsin Administrative Code, Chapter A-E 7.08 U.S. Public Land Monument Record (3)(a)(b)(c)(d)(e)(f)(g)(h)(i). An additional sheet may be added if necessary to conform with said requirements.

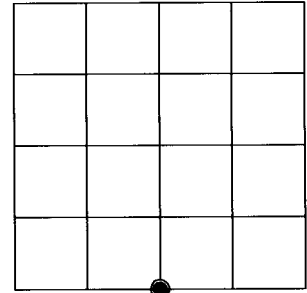
AT            O'CLOCK            M  
KYLE J. FRANSON  
REGISTER OF DEEDS

(a) CORNER LOCATION:  
South Quarter Corner of Section 33  
Township 39 North  
Range 6 East  
Town of Minocqua  
County of Oneida

WISCRS - Oneida County  
North: 230541.970 USft  
East: 178467.970 USft  
Latitude: 45° 49' 05.27764" N  
Longitude: 89° 44' 47.53016" W  
Datum: NAD 83(2011)  
GNSS Method: RTK - Direct  
GNSS Control: WISCORS VRS  
Record North: 230541.938 USft  
Record East: 178467.947 USft  
Record Datum: NAD 83(1991)

(RECORDING AREA)

SECTION 33



(b) HISTORY OF ORIGINAL CORNER ESTABLISHMENT

Original Surveyor: Alfred Millard  
Date of Survey: September 19, 1860

Original B.T.'S: W. Birch 6" N 58°W, 19 lks.  
Y. Pine 9" S 38°W 23 lks.

(f)(g)(h) DESCRIPTION OF MONUMENT FOUND AT THIS CORNER AND IF IT WAS ACCEPTED, STATE ALL EVIDENCE (MATERIAL, TESTIMONIAL, OCCUPATIONAL, PLATS, RECORD, OTHER MONUMENTS) USED AS A BASIS FOR ESTABLISHING LOCATION. IF NOT ACCEPTED OR IF NOTHING WAS FOUND, STATE EVIDENCE USED AS BASIS FOR ESTABLISHING LOCATION. IF REESTABLISHED THROUGH LOST CORNER PROPORTIONATE METHODS, INDICATE ALL MONUMENTS, DISTANCES AND DIRECTIONS USED TO ESTABLISH. INDICATE TYPE OF MONUMENT AND SIGN POST FOUND OR SET.

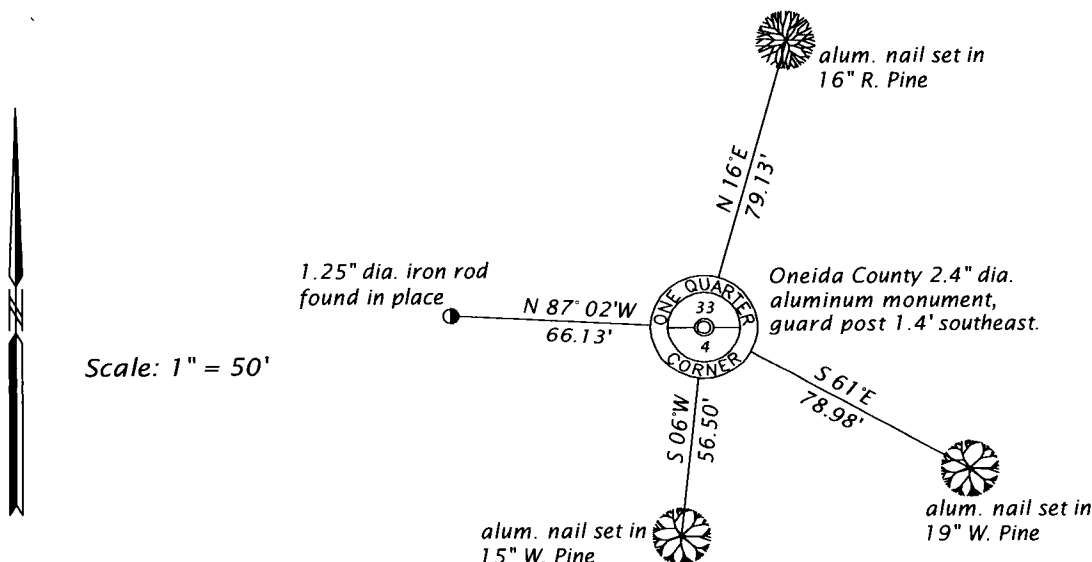
February 23, 1978 - Gerald Boyd Inman, RLS No. 891 (recorded plat of Timber Ridge II), located in Section 33 & 34, T39N, R6E, and in Sections 3 & 4, T38N, R6E), plat legends corner "3/4" iron pipe found".

January 11, 2005 - Bentown A. McMullen, RLS No. 2555, McMullen & Associates, Incorporated, (map of survey for Job #204107 filed as B5794 in county surveyor's office) for a survey in Section 4, T38N, R6E, legends this corner 2 1/2" Iron Pipe With an Aluminum Cap Found".

December 28, 2017 - James D. Rein, PLS No. 1234, we recovered an Oneida County capped 2.4" dia. aluminum monument extending 3" above ground level, referenced by a poly guard post, 1.4 feet southeast. The cap is marked to identify corner and includes surveyor number "S-1885". I accept this monument as being the best available evidence of the original corner position, and we made reference ties as shown in the plan.

The coordinate value shown has been verified by at least one of the following methods: 1) comparison to a previously GPS determined published value; 2) the value is the average of two or more GPS observations at a markedly different time; 3) one or more distances were measured back to the GPS observed corner from temporary GPS observed offset locations.

(c)(d)(e) PLAN VIEW OF CORNER WITH TIES TO AT LEAST 4 WITNESS MONUMENTS. IF IN DISAGREEMENT WITH PREVIOUSLY ESTABLISHED CORNER, SHOW THE DISTANCE BETWEEN THE TWO CORNERS AND ALSO INDICATE THE TIES TO THE DISPUTED CORNER.



(i) I, JAMES D. REIN, PROFESSIONAL LAND SURVEYOR NO. S-1234 HEREBY CERTIFY THAT THE CORNER LOCATION ON THIS RECORD WAS DETERMINED BY ME OR UNDER MY DIRECTION AND CONTROL AND THAT THIS U.S. PUBLIC LAND SURVEY MONUMENT RECORD IS CORRECT AND COMPLETE TO THE BEST OF MY KNOWLEDGE AND BELIEF.



*[Handwritten Signature]*  
SIGNATURE

5-24-17  
DATE

INDEX NO. Z-11  
3906330020