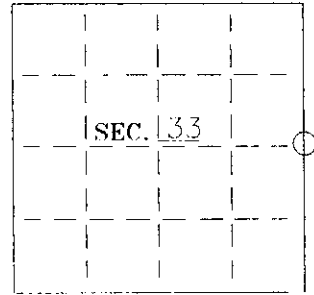


U. S. PUBLIC LAND SURVEY MONUMENT RECORD

Note: This form is intended and designed to fulfill all requirements of Wisconsin Administrative Code—Chapter A-E 7.08 U. S. Public Land Survey Monument Record (3)(a)(b)(c)(d)(e)(f)(g)(h)(i). An additional sheet may be added if necessary to conform with said requirements.

(a) CORNER LOCATION: State Plane Coordinates
 E 1/4 corner of Sec. 33 X _____
 Township 39 North Y _____
 Range 06 East Datum Base _____
 Town/City Minocqua County of Oneida



(b) HISTORY OF ORIGINAL CORNER ESTABLISHMENT:
 Original Surveyor: Alexander Anderson
 Date of Survey: Commenced October 15, 1863
 Completed October 23, 1863

Original B.T.'S
 Black Pine 10" N67°W 45 lks
 Black Pine 10" N82°W 51 lks

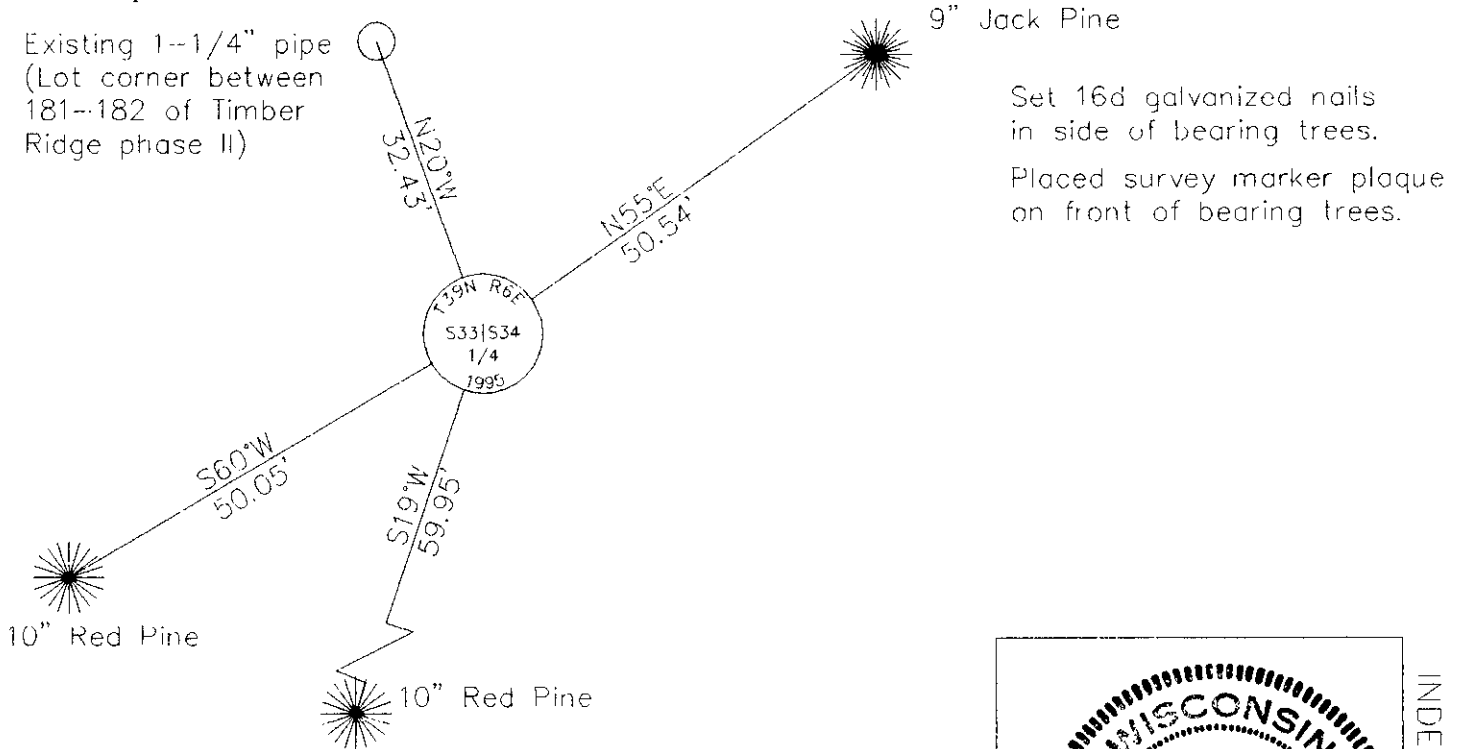
(b)(f)(g)(h) Description of monument found at this corner and if it was accepted—state all evidence (material—testimonial—occupation—plats—records—other monuments) used as a basis for accepting. If not accepted or if nothing was found state evidence used as basis for establishing location. If reestablished through lost corner proportionate methods indicate all monuments—distances and directions used to establish. Indicate type of monument and sign post found or set.

June 21, 1963—William Cameron notes—References 1/4 corner is I.P. by William Cameron in fall of 1962.

July 1963—William Cameron map—References 3/4" iron pipe and wood post at 1/4 corner.

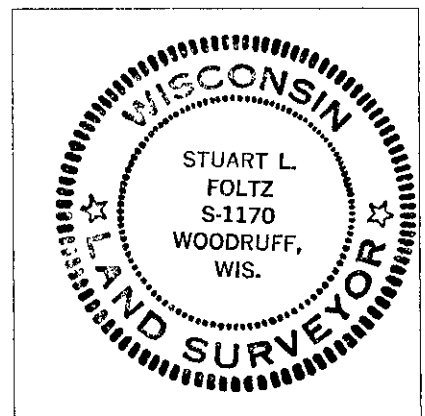
October 16, 1995—found 1-1/4" iron pipe at edge of trail as described on Cameron's notes. Accepted pipe location and set a 2-1/2" dia. by 30" long aluminum-capped Oneida County monument over the existing pipe. Set plastic signpost 1-1/2' northwest.

(c)(d)(e) Plan view of corner with ties to at least 4 witness monuments. If in disagreement with previously established corner—show the distances between the two corners and also indicate the ties to the disputed.



(i) I Stuart L. Foltz hereby certify that the corner location on this record was determined by me or under my direction and control and that this U.S. Public Land Survey Monument Record is correct and complete to the best of my knowledge and belief.

Signature Stuart L. Foltz Date 12-20-95



INDEX NO. X-13

3906332000