

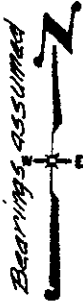
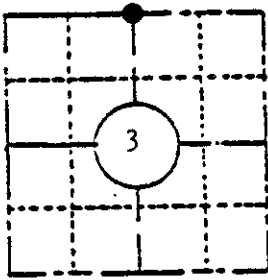
Stock No. 26273

U. S. PUBLIC LAND SURVEY MONUMENT RECORD

INSTRUCTIONS: This record shall show the location of the corner and shall include all of the following nine elements (a through i).

(a) Identify the corner by reference to the U.S. public land survey system.

North Quarter
Section 3,
T38N, R6E



LOCATION SKETCH

(Location of landmark indicated by "●")

September, 1860 - Alfred Millard, Deputy Surveyor,
Set 1/4 Section post

Original bearing trees:

White Birch, 4", N56°W

Sugar 12", S34°E,

Nov. 26, 1907- D. H. Vaughan, Oneida County Surveyor
Survey in Section 34. "Found 1/4 P iron pipe for post.
S.E. tree ok.

October 9th, 1952- F. R. Wincentsen, P.E. Survey for
G. F. Walliser shown on Genisot Engineering Co. Drawing
No. 1186-1, identifies corner as monumented by iron pipe
witnessed by bearing trees-

Oak 10", S2°-0'W, 14.6 feet

Norway Pine 14", N51°-30'W, 19.5 feet.

May 10th, 1902 - D. H. Vaughn, Oneida County Surveyor,
survey in Section 3 "Found one original tree and post
set by Billy Allen with rock piled around it."

(b) Describe any record evidence, monument evidence, occupational evidence, testimonial evidence or any other material evidence you considered, and whether the monument was found or placed.

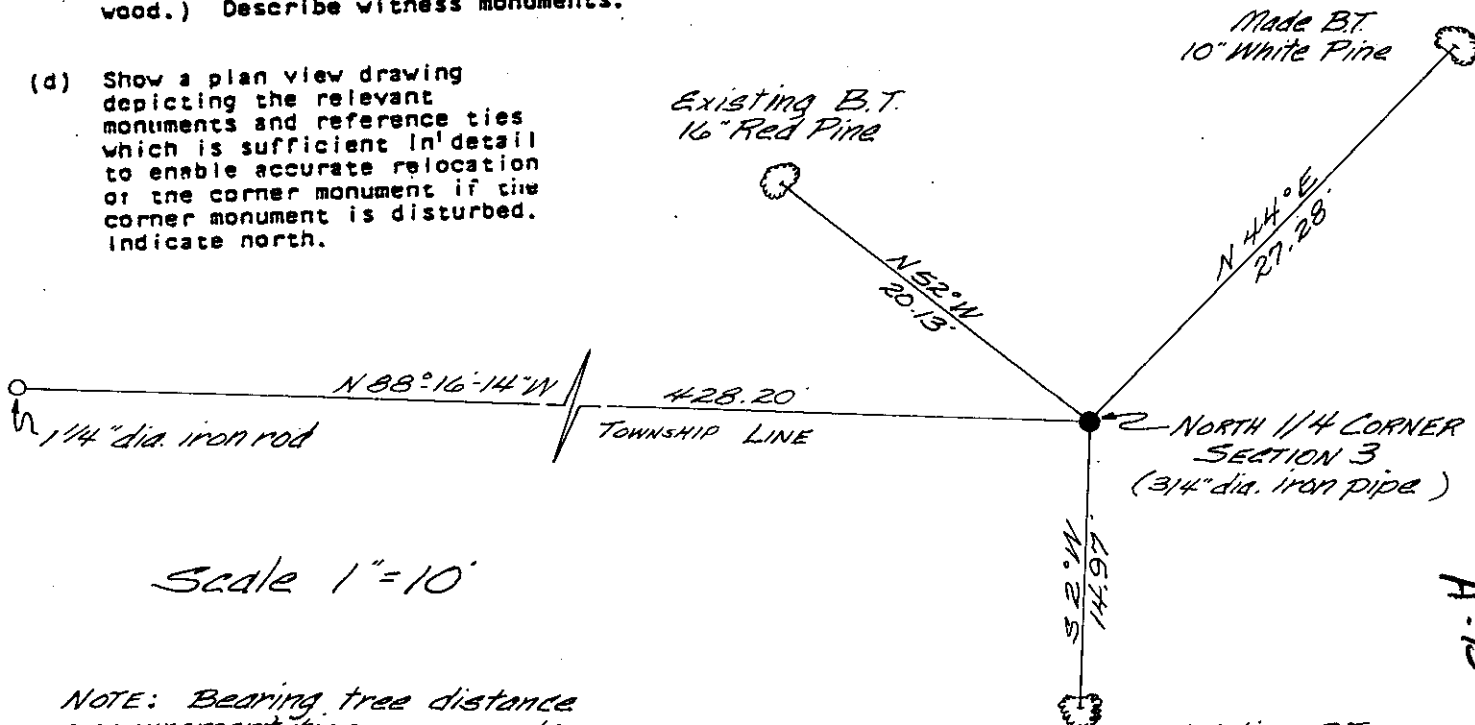
Found a 3/4" inside diameter iron pipe flush in circle of stones. Corner is referenced to existing bearing trees-

16" Red Pine (marked "1/4 S BT") N52°W, 20.13 feet

10" Red Oak (scar overgrown) S 2°W, 14.97 feet

(c) In the plan view drawing below, provide reference ties to at least 4 witness monuments, or, if the location is within a municipality, to at least 2 witness monuments. (Witness monuments shall be made of concrete, natural stone, iron or other equally durable material, except wood.) Describe witness monuments.

(d) Show a plan view drawing depicting the relevant monuments and reference ties which is sufficient in detail to enable accurate relocation of the corner monument if the corner monument is disturbed. Indicate north.



Scale 1" = 10'

NOTE: Bearing tree distance measurement ties were made to an aluminum nail set in the center of root crown.

3906340020

A-15

(e) Describe any material discrepancy between the location of the corner as restored or reestablished and the location of that corner as previously restored or reestablished by distance and direction. Show the discrepancy on the plan view drawing under (d), above. Show the distances between the corner as previously restored or reestablished and (1) the corner as restored or reestablished, and (2) to at least 2 of the witness monuments shown on the drawing in (d), above.

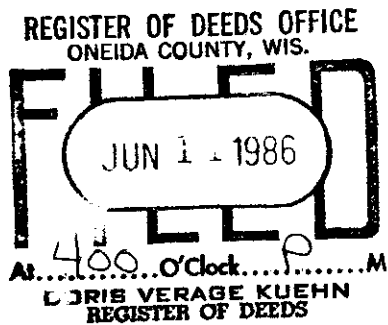
None found

(f) Was the corner restored through acceptance of (1) an obliterated evidence location, or, (2) a found perpetuated location?

The corner was restored through acceptance of a found perpetuated location.

(g&h) Was the corner reestablished through lost corner proportionate methods? If so, show the method, including the directions and distances to other public land survey corners used as evidence or used for proportioning in determining the corner location?

No.

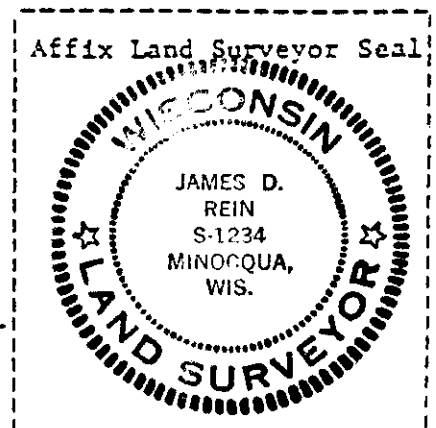


(i) I, JAMES D. REIN, RLS No. S-1234
(type or print name) certify that the corner location shown on this record was determined by me or under my direction and control and that this U.S. Public Land Survey Monument Record is correct and complete to the best of my knowledge and belief.

Signature

May 2nd, 1983

Date



U.S. PUBLIC LAND SURVEY MONUMENT RECORD

REGISTER OF DEEDS OFFICE
ONEIDA COUNTY
FILED

FEB 17 2022

KYLE J. FRANSON
REGISTER OF DEEDS

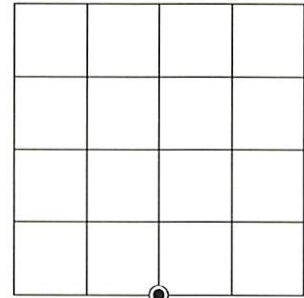
(a) CORNER LOCATION:

South Quarter Corner of Section 34
Township 39 North
Range 6 East
Town of Minocqua
County of Oneida

North:
East:
Datum:
GNSS Method:
GNSS Control:

(RECORDING AREA)

SECTION 34



(b) HISTORY OF ORIGINAL CORNER ESTABLISHMENT

Original Surveyor:
Date of Survey: Commenced
Completed
Original B.T.'S

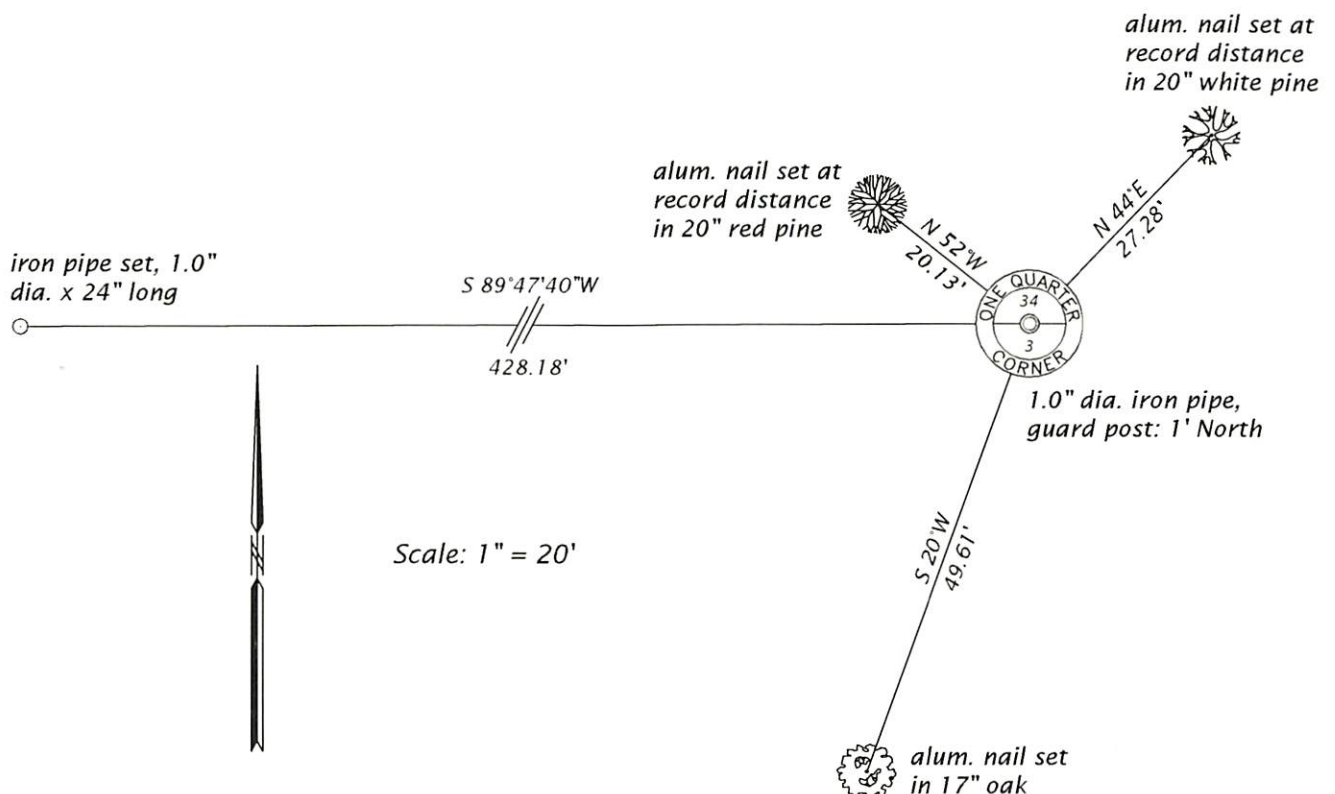
*SEE PREVIOUS U.S.P.L.S. MONUMENT
RECORD DATED MAY 2, 1983.*

(f)(g)(h) DESCRIPTION OF MONUMENT FOUND AT THIS CORNER AND IF IT WAS ACCEPTED, STATE ALL EVIDENCE (MATERIAL, TESTIMONIAL, OCCUPATIONAL, PLATS, RECORD, OTHER MONUMENTS) USED AS A BASIS FOR ESTABLISHING LOCATION. IF NOT ACCEPTED OR IF NOTHING WAS FOUND, STATE EVIDENCE USED AS BASIS FOR ESTABLISHING LOCATION. IF REESTABLISHED THROUGH LOST CORNER PROPORTIONATE METHODS, INDICATE ALL MONUMENTS, DISTANCES AND DIRECTIONS USED TO ESTABLISH. INDICATE TYPE OF MONUMENT AND SIGN POST FOUND OR SET.

This is a perpetuation of a previous U.S.P.L.S. Monument Record by James D. Rein, RLS, dated May 2, 1983, and filed in the office of the Oneida County Register of Deeds. A complete history of the corner can be found on the previous monument record. I accept the previous location as a true and faithful perpetuation or reestablishment of the original corner location and further perpetuate it as follows.

June 25, 2020, James D. Rein, P.L.S. No. S-1234, we found, and I accepted the 1" (od) iron pipe shown on the previous monument record. The southerly bearing tree is now gone - see below for updated witnesses.

(c)(d)(e) PLAN VIEW OF CORNER WITH TIES TO AT LEAST 4 WITNESS MONUMENTS. IF IN DISAGREEMENT WITH PREVIOUSLY ESTABLISHED CORNER, SHOW THE DISTANCE BETWEEN THE TWO CORNERS AND ALSO INDICATE THE TIES TO THE DISPUTED CORNER.



(i) I, JAMES D. REIN, PROFESSIONAL LAND SURVEYOR NO. S-1234 HEREBY CERTIFY THAT THE CORNER LOCATION ON THIS RECORD WAS DETERMINED BY ME OR UNDER MY DIRECTION AND CONTROL AND THAT THIS U.S. PUBLIC LAND SURVEY MONUMENT RECORD IS CORRECT AND COMPLETE TO THE BEST OF MY KNOWLEDGE AND BELIEF.



James D. Rein
SIGNATURE

2-14-22
DATE

INDEX NO. Z-15
3906340020