

U.S. PUBLIC LAND SURVEY MONUMENT RECORD

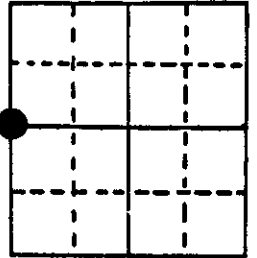
Note: This form is intended and designed to fulfill all requirements of Wisconsin Administrative Code, Chapter A-E 5.02, U.S. Public Land Survey Monument Record (3) (a) (b) (c) (d) (e) (f) (g) (h) (i). An additional sheet may be added if necessary to conform with said requirements.

(a) Corner location: Township 39 North

Range 6 East

Town Minocqua

County Oneida



Section 35

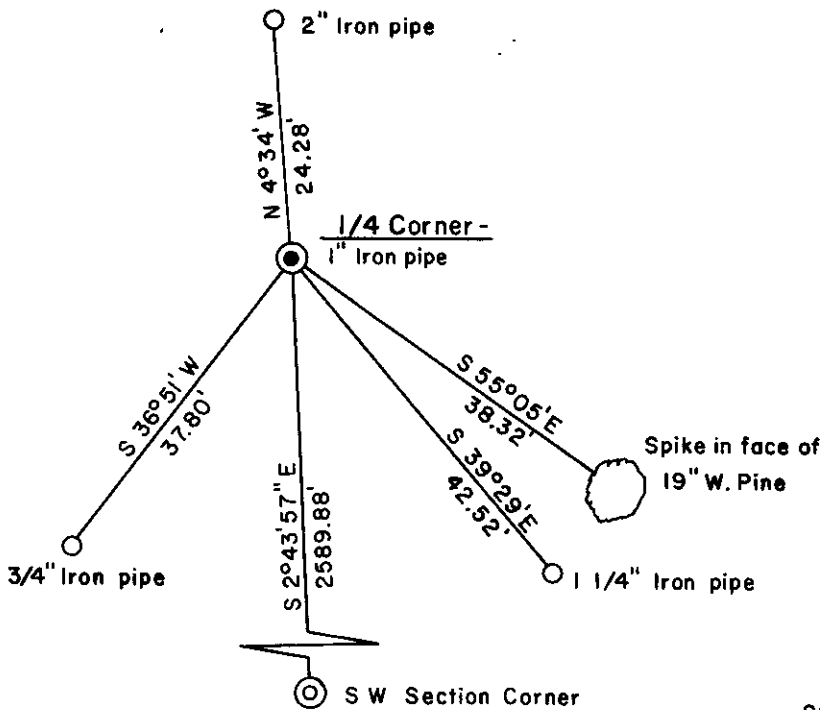
(b) (f) (g) (h) Description of monument found at this corner and if it was accepted, state all evidence (material, testimonial, occupational, plats, records, other monuments) used as a basis for accepting. If not accepted or if nothing was found, state evidence used as basis for establishing location. If reestablished through lost corner proportionate methods, indicate all monuments, distances and directions used to establish.

Original corner set October, 1863 by Alexander Anderson, Deputy Surveyor.

Set 1/4 Section post. Bearing trees: W. Pine 10" S80°E, 12 links
Aspen 14", N80°W, 33 links

May 12, 1986 - James D. Rein, Registered Land Surveyor - found 1" iron pipe 4" below ground level. Found spike in face of 19" W. Pine S55°-05'E, 38.32 feet
2" galv. iron pipe N4°-34'W, 24.28 feet
1 1/4" iron pipe 12" below ground level S39°-29'E, 42.52 feet
Set 3/4" x 24" iron pipe S36°-51'W, 37.80 feet

(c) (d) (e) Plan view of corner with ties to at least 4 witness monuments. If in disagreement with previously established corner, show the distances between the two corners and also indicate the ties to the disputed corner.

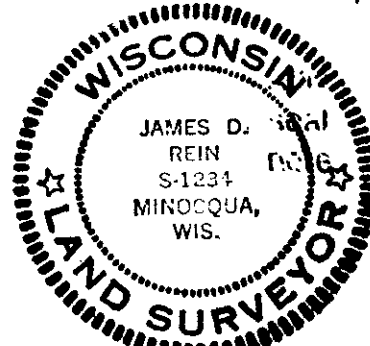


Bearings Assumed

SCALE 1" = 20'

(i) I, James D. Rein, Registered Land Surveyor No. S-1234
(type or print name) certify that the corner location on this record was determined by me or under my direction and control and that this U.S. Public Land Survey Monument Record is correct and complete to the best of my knowledge and belief.

James D. Rein Signature May 20th, 1986 Date



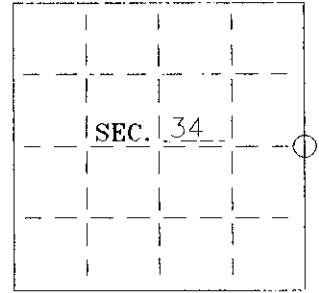
Index No. X-17

3906 34 2000

U. S. PUBLIC LAND SURVEY MONUMENT RECORD

Note: This form is intended and designed to fulfill all requirements of Wisconsin Administrative Code—Chapter A-E 7.08 U. S. Public Land Survey Monument Record (3)(a)(b)(c)(d)(e)(f)(g)(h)(i). An additional sheet may be added if necessary to conform with said requirements.

(a) CORNER LOCATION: State Plane Coordinates
 E 1/4 corner of Sec. 34 X _____
 Township 39 North Y _____
 Range 06 East Datum Base _____
 Town/City Minocqua County of Oneida



(b) HISTORY OF ORIGINAL CORNER ESTABLISHMENT:
 Original Surveyor: Alexander Anderson
 Date of Survey: Commenced October 15, 1863
 Completed October 23, 1863

Original B.T.'S
 White Pine 10" S80°E 12 lks
 Aspen 14" N80°W 33 lks

(b)(f)(g)(h) Description of monument found at this corner and if it was accepted—state all evidence (material—testimonial—occupation—plats—records—other monuments) used as a basis for accepting. If not accepted or if nothing was found state evidence used as basis for establishing location. If reestablished through lost corner proportionate methods indicate all monuments—distances and directions used to establish. Indicate type of monument and sign post found or set.

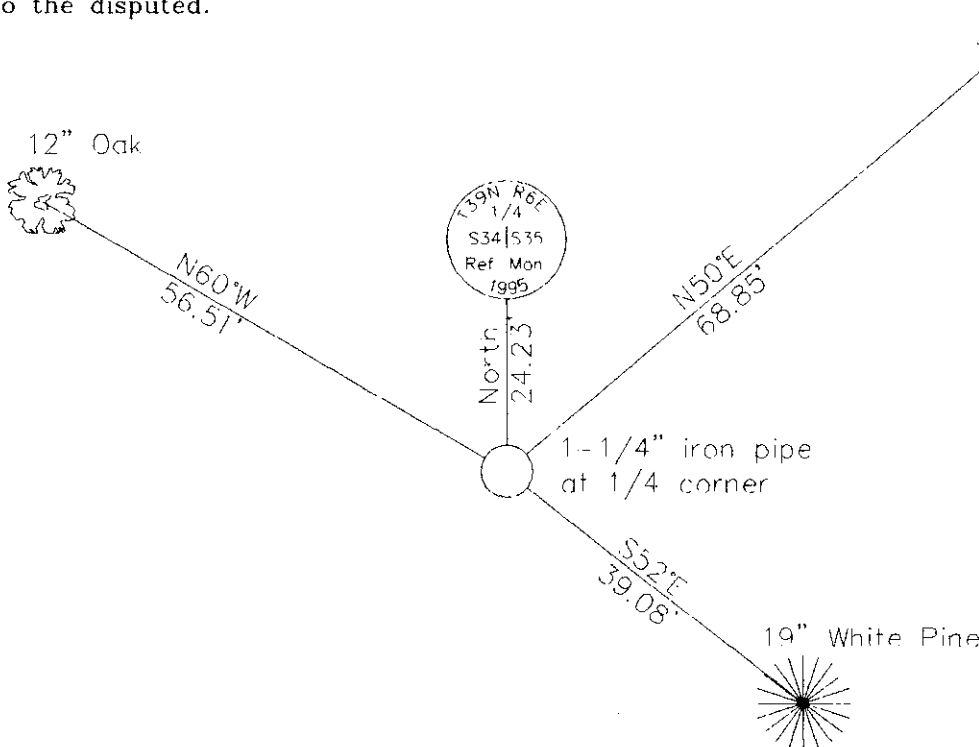
October 12, 1960—Plat of Spruce-Wood by William Cameron—References 1/4 corner as iron rod. Southeast corner of Plat referenced as 2" iron pipe.

January, 1974—John Fisher map—References 1/4 corner as iron pipe found in place witnessed by a power pole N41°W 24.3', a power pole S40°W 31.9' and a 14" White Pine S57°E 36.4'.

December 26, 1979—Jerome Kraemer map—References 1/4 corner as 1" dia. iron pipe found with a 17" White Pine S54°E 38.30' and a PK nail in a power pole N42°W 24.38'.

October 16, 1995—Found a 1-1/4" iron pipe at the intersection of Titus and Lee Roads and a 2" iron pipe, north 24.23', as SE corner of Spruce-Wood Plat. Accepted the position of the 1/4 corner and 2" pipe. Replaced the existing 2" iron pipe with a 2-1/2" dia. by 30" long aluminum-capped Oneida County monument as a reference. Set a plastic signpost adjacent to the reference monument.

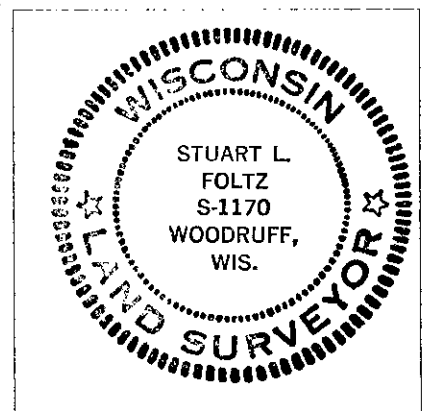
(c)(d)(e) Plan view of corner with ties to at least 4 witness monuments. If in disagreement with previously established corner—show the distances between the two corners and also indicate the ties to the disputed.



Set 16d galvanized nails in side of bearing trees.
 Placed survey marker plaque on front of bearing trees.
 Note: The Oak BT is blazed, the White Pines are not.

(i) I Stuart L. Foltz
 hereby certify that the corner location on this record was determined by me or under my direction and control and that this U.S. Public Land Survey Monument Record is correct and complete to the best of my knowledge and belief.

Stuart L. Foltz 12-20-95
 Signature Date



INDEX NO. X-17

3906342000