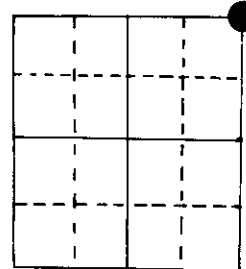


U.S. PUBLIC LAND SURVEY MONUMENT RECORD

Note: This form is intended and designed to fulfill all requirements of Wisconsin Administrative Code, Chapter A-E 5.02, U.S. Public Land Survey Monument Record (3) (a) (b) (c) (d) (e) (f) (g) (h) (i). An additional sheet may be added if necessary to conform with said requirements.

(a) Corner location: Township 39 North
 Range 7 East ~~East~~



Town/ ~~City~~ Woodruff
 County Oneida

NE cor Section 12

2" iron pipe with W.C.D. brass cap

(b) (f) (g) (h) Description of monument found at this corner and if it was accepted, state all evidence (material, testimonial, occupational, plats, records, other monuments) used as a basis for accepting. If not accepted or if nothing was found, state evidence used as basis for establishing location. If reestablished through lost corner proportionate methods, indicate all monuments, distances and directions used to establish.

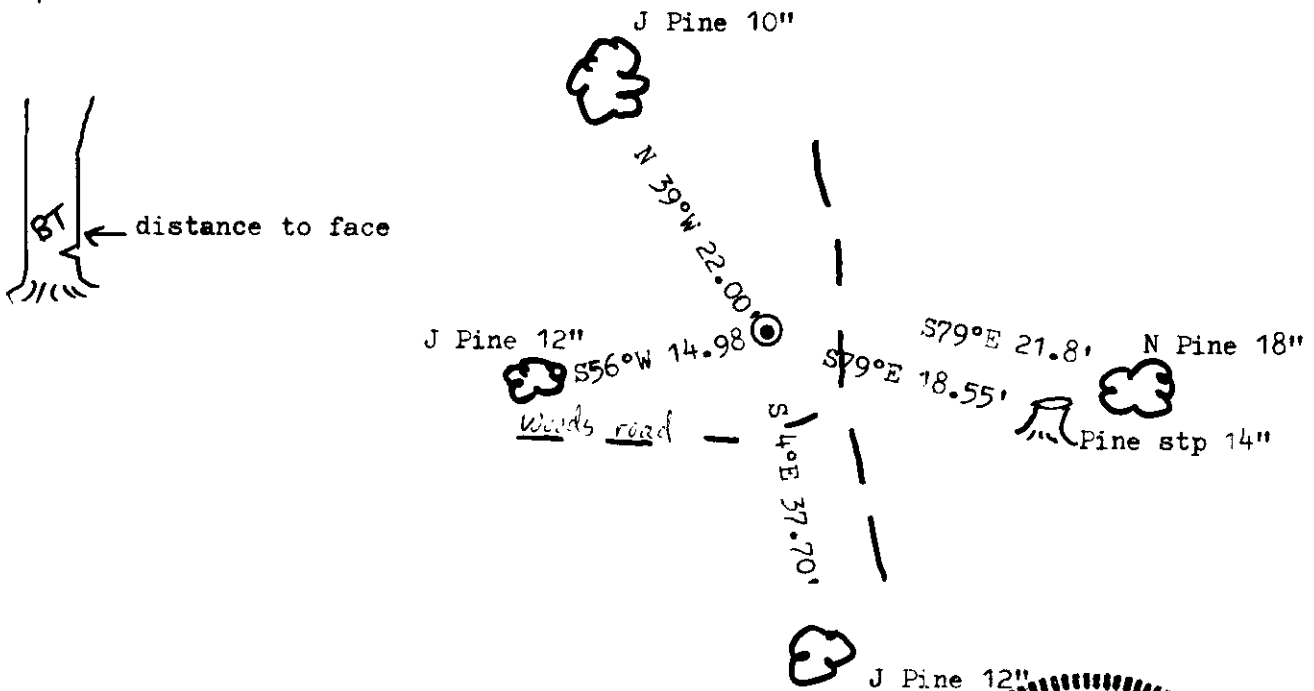
Original Alex Anderson Sept 1860. OBT's PY 16" S 77°E 25 lks, PY 20" S 35 °W 25 lks
 PW 20" N 47°W 73 lks, PW 6" N 27°E 7 lks

Wisc. Valley Imp. 1938 at 41.886 west of N ¼ & 40.242 north of W¼ found orig. cor.
 Replaced cor post with 2" iron pipe, BT's PN 5" N58°E 0.917 ch
 PW 5" S 10°E 1.732 ch

Reinemann DNR) on 8/61 set W.C.D. pipe from OBT's., old wood post & WVIC pipe.
 Made BT's PN 12" S 86°E 0.35 ch, PJ 6" S 21°W 0.22 ch
 PN 14" stp S 86°E 0.195 ch, PW 22" stp S 25°W 0.280 ch

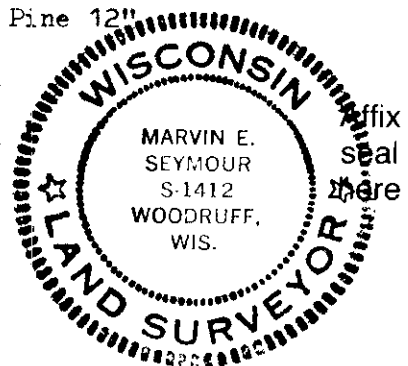
I found W.C.D. pipe pushed over by a vehicle on 12/23/80. Used PN 18" S79°E 21.8'
 and Pine stp SE to reset pipe. Made new BT's.

(c) (d) (e) Plan view of corner with ties to at least 4 witness monuments. If in disagreement with previously established corner, show the distances between the two corners and also indicate the ties to the disputed corner.



(i) I, Marvin E. Seymour
 (type or print name) certify that the corner location on this record was determined by me or under my direction and control and that this U.S. Public Land Survey Monument Record is correct and complete to the best of my knowledge and belief.

Marvin E. Seymour April 12, 1984
 Signature Date



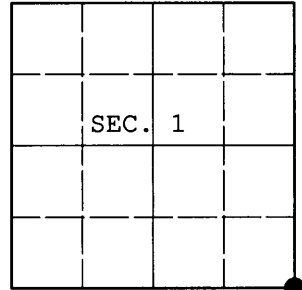
3907010000

E-25

U.S. PUBLIC LAND SURVEY MONUMENT RECORD

Note: This form is intended and designed to fulfill all requirements of Wisconsin Administrative Code, Chapter A-E 7.08 U.S. Public Land Survey Monument Record (3) (a) (b) (c) (d) (e) (f) (g) (h) (i). An additional sheet may be added if necessary to conform with said requirements.

(a) CORNER LOCATION: Plane Coordinates
 Cor. of Secs. 1, 6, 7 & 12 N:
 Township 39 North E:
 Range 7 & 8 East of the 4th P.M. Datum:
 Town of Woodruff County of Oneida



(b) HISTORY OF ORIGINAL CORNER ESTABLISHMENT

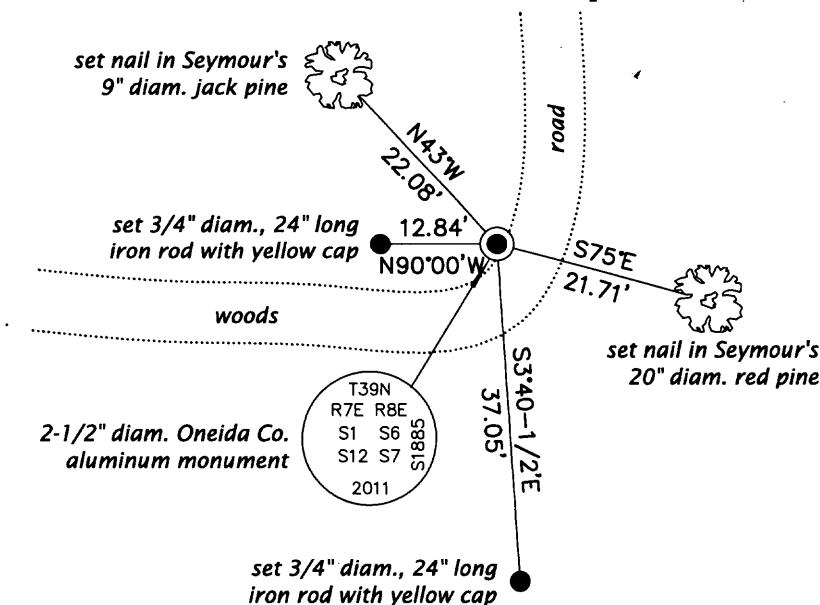
Original Surveyor: Alfred Millard	Original Accessories:
Date of Survey: Commenced Sep., 1860	white pine 20" N47°W, 73 lks.
Completed Sep., 1860	yellow pine 16" S77°E, 25 lks.
	white pine 6" N24°E, 7 lks.
	yellow pine 20" S35°W, 25 lks.

(b) (f) (g) (h) Description of monument found at this corner and if it was accepted, state all evidence (material, testimonial, occupational, plats, records, other monuments) used as a basis for accepting. If not accepted or if nothing was found, state evidence used as basis for establishing location. If re-established through lost corner proportionate methods, indicate all monuments, distances and directions used to establish. Indicate type of monument and sign post found or set.

NOTE: This is a perpetuation of a previous USPLS Monument Record by Marvin E. Seymour, RLS dated April 12, 1984 and filed in the office of the Oneida County Register of Deeds. A complete history of the corner can be found on the previous monument record. I accept the previous location as a true and faithful perpetuation or reestablishment of the original corner location and further perpetuate it as follows.

August 27, 2011: I found Seymour's monument, a 2-1/2" diam., 48" long iron pipe with WCD brass cap lying flat on the ground at the corner point. As a result of digging and probing, I was able to recover the vertical void left by the monument in its original position. At this point, I set a 2-1/2" diam., 30" long aluminum monument with Oneida Co. aluminum cap buried 12" below the surface of the woods road. Only two of Seymour's bearing trees remain, but they and the stumps of the others confirm this corner location. I found or established accessories as shown below and set a white plastic sign post adjacent to the westerly reference monument.

(c) (d) (e) Plan view of corner with ties to at least 4 witness monuments. If in disagreement with previously established corner, show the distances between the two corners and also indicate the ties to the disputed.



REGISTER OF DEEDS OFFICE
 ONEIDA COUNTY, WIS.

 At _____ O'Clock _____ M
THOMAS H. LEIGHTON
 REGISTER OF DEEDS



(i) I, Jeffrey W. Austin, Registered Land Surveyor No. S-1885, hereby certify upon honor that the corner location on this record was determined by me or under my direction and control and that this U.S. Public Land Survey Monument Record is correct and complete to the best of my knowledge and belief.



Signature _____

Date SEP. 10, 2011