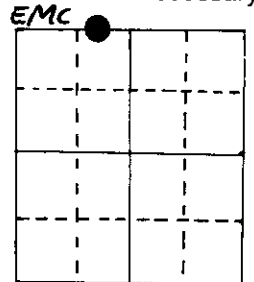


# U.S. PUBLIC LAND SURVEY MONUMENT RECORD

Note: This form is intended and designed to fulfill all requirements of Wisconsin Administrative Code, Chapter A-E 5.02, U.S. Public Land Survey Monument Record (3) (a) (b) (c) (d) (e) (f) (g) (h) (i). An additional sheet may be added if necessary to conform with said requirements.

(a) Corner location: Township 39 North  
 Range 7 East ~~West~~



Section 8

Town/Village of Woodruff

County Oneida

2" iron pipe with D.N.R. brass cap

(b) (f) (g) (h) Description of monument found at this corner and if it was accepted, state all evidence (material, testimonial, occupational, plats, records, other monuments) used as a basis for accepting. If not accepted or if nothing was found, state evidence used as basis for establishing location. If reestablished through lost corner proportionate methods, indicate all monuments, distances and directions used to establish.

Original Alex Anderson Sept 1863. No BT's.

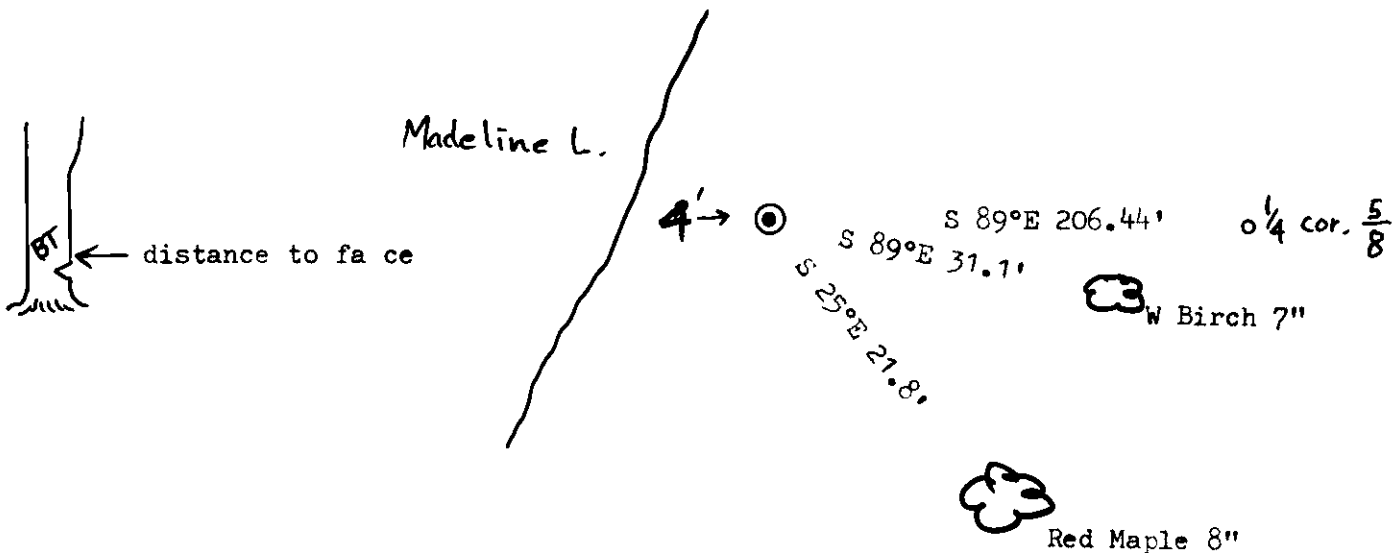
Dorr on 12/3/1907 found Pine stp 20" S 36°E 0.255 ch.

Kowalke 1/50 a t 3.124 ch west of 1/4 cor set iron post, 0.258 east of Dorr's MC. Found his BT.

Copp & Seymour on 10/12/79 at 206.44 west of 1/4 cor found post image and replaced it with DNR brass cap., this is 4' east of water edge on 4' high bank.  
 Made BT's BW 7" S 89°E 31.1', MR 8" S 25°E 21.8'

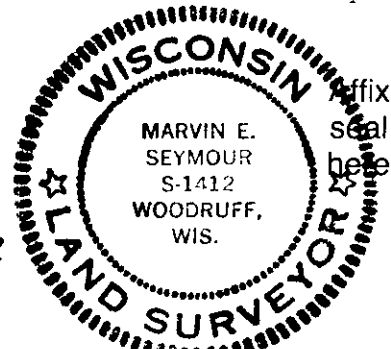
I found brass cap in good condition on 8/4/82.

(c) (d) (e) Plan view of corner with ties to at least 4 witness monuments. If in disagreement with previously established corner, show the distances between the two corners and also indicate the ties to the disputed corner.



(i) I, Marvin E. Seymour  
 (type or print name) certify that the corner location on this record was determined by me or under my direction and control and that this U.S. Public Land Survey Monument Record is correct and complete to the best of my knowledge and belief.

Marvin E. Seymour April 11, 1984  
 Signature Date



E-9

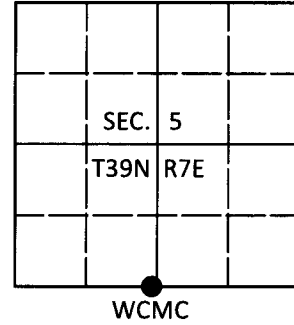
390705007.1

**U.S. PUBLIC LAND SURVEY MONUMENT RECORD**

Note: This form is intended and designed to fulfill all requirements of Wisconsin Administrative Code, Chapter A-E 7.08 U.S. Public Land Survey Monument Record (3)(a-i).

(a) CORNER LOCATION  
 Wit. Meander Cor. of Secs. 5 & 8  
 Township 39 North  
 Range 7 East of the 4th P.M.  
 Town of Woodruff  
 County of Oneida

WISCRS - Oneida County  
 N: 256,710.96 USft  
 E: 204,844.35 USft  
 Datum: NAD 83(2011)  
 GNSS Method: RTN - Offset  
 GNSS Control: WISCORS VRS



(b) HISTORY OF ORIGINAL CORNER ESTABLISHMENT

Original Surveyor: \_\_\_\_\_ Original Accessories: \_\_\_\_\_  
 Date of Survey Commenced: \_\_\_\_\_ See previous USPLS Monument Record  
 Completed: \_\_\_\_\_

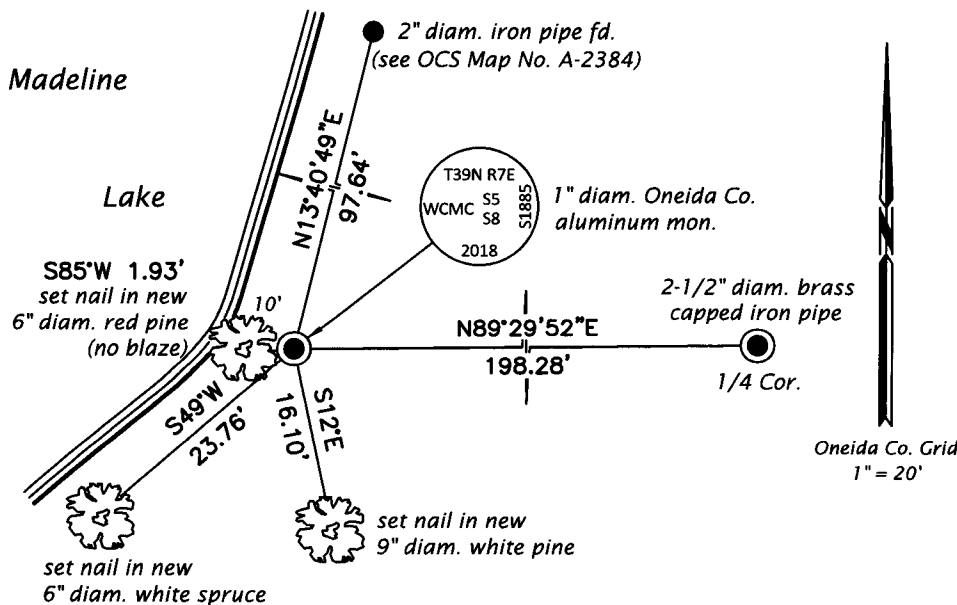
(b)(f)(g)(h) Description of monument found at this corner and if it was accepted, state all evidence (material, testimonial, occupational, plats, records, other monuments) used as a basis for accepting. If not accepted or if nothing was found, state evidence used as basis for establishing location. If re-established through lost corner proportionate methods, indicate all monuments, distances and directions used to establish. Indicate type of monument and sign post found or set.

*This is a perpetuation of a previous USPLS Monument Record by Marvin E. Seymour, RLS dated April 11, 1984 and filed in the office of the Oneida County Register of Deeds. A complete history of the corner can be found on the previous monument record. I accept the previous location as a true and faithful perpetuation or reestablishment of the original corner location and further perpetuate it as follows.*

*April 16, 2018: I found the record monument leaning considerably, situated in an area of lakeshore that is falling into the lake. I recovered both of the record bearing trees (now stumps) and established the record corner location by intersecting the record distances to the blazed face of the bearing trees. The resulting location agrees with the DNR traverse work to the East and the distance (99.91') to the corner of OCS Map No. A-2384 as shown below. I set the following witness monument 8.00' East of the record location as measured along the section line: a 1" diam., 30" long aluminum pipe with a 2-1/2" diam. Oneida Co. aluminum cap flush with the ground surface. I found or established accessories as shown below. I set a white vinyl sign post bearing East, 0.8 ft.*

*The coordinate value shown has been verified by at least one of the following methods: 1) comparison to a previously GPS determined published value; 2) the value is the average of two or more GPS observations at a markedly different time; 3) one or more distances were measured back to the GPS observed corner from temporary GPS observed offset locations.*

(c)(d)(e) Plan view of corner with ties to at least 4 witness monuments. If in disagreement with previously established corner, show the distances between the two corners and also indicate the ties to the disputed.



REGISTER OF DEEDS OFFICE  
 ONEIDA COUNTY  
 FILED

MAY 01 2018

KYLE J. FRANSON  
 REGISTER OF DEEDS

(i) I, Jeffrey W. Austin, Professional Land Surveyor No. S-1885, hereby certify that the corner location on this record was determined by me or under my direction and control and that this U.S. Public Land Survey Monument Record is correct and complete to the best of my knowledge and belief.

*[Handwritten Signature]*  
 \_\_\_\_\_  
 Signature

APR. 23, 2018  
 \_\_\_\_\_  
 Date