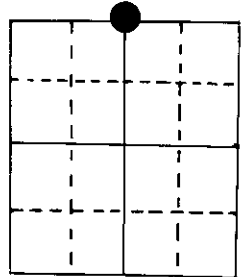


U.S. PUBLIC LAND SURVEY MONUMENT RECORD

Note: This form is intended and designed to fulfill all requirements of Wisconsin Administrative Code, Chapter A-E 5.02, U.S. Public Land Survey Monument Record (3) (a) (b) (c) (d) (e) (f) (g) (h) (i). An additional sheet may be added if necessary to conform with said requirements.

(a) Corner location: Township 39 North
 Range 7 East/~~West~~
 Town/~~City/Village~~ of Woodruff
 County Oneida



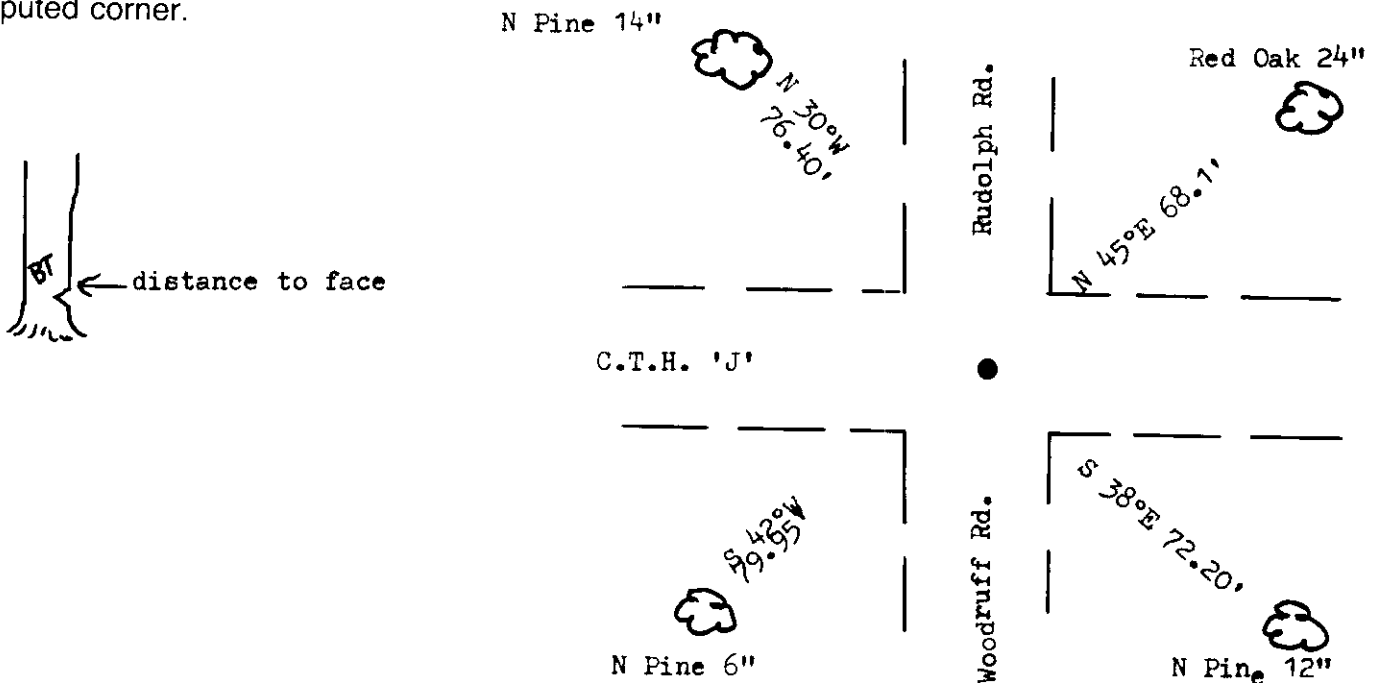
N $\frac{1}{4}$ Section 7

1" iron rod in intersection

(b) (f) (g) (h) Description of monument found at this corner and if it was accepted, state all evidence (material, testimonial, occupational, plats, records, other monuments) used as a basis for accepting. If not accepted or if nothing was found, state evidence used as basis for establishing location. If reestablished through lost corner proportionate methods, indicate all monuments, distances and directions used to establish.

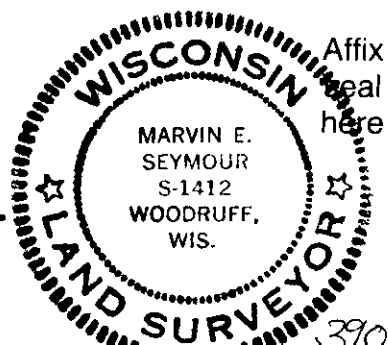
Original Alex Anderson Sept 1863. OBT's PW 10" N 10°W, 22 lks, PW 8" S 27°E 27 lks
 Dorr in 12/9/1907 found OBT stp 8" S 27°E 27.
 Ilg in 1970 set R.R. spike in ctr rd. BT's PN 14" N 30°W 76.4', OR 18" N 45°E 68.1'
 I found 1" iron rod in rd. on 8/4/82. In 1983 the Hwy 'J' was resurfaced so now the iron rod is below the blacktop. B T's OK.
 Made New BT's PN 6" S 42°W 79.95', PN 1 2" S 38°E 72.20'

(c) (d) (e) Plan view of corner with ties to at least 4 witness monuments. If in disagreement with previously established corner, show the distances between the two corners and also indicate the ties to the disputed corner.



(i) I, Marvin E. Seymour
 (type or print name) certify that the corner location on this record was determined by me or under my direction and control and that this U.S. Public Land Survey Monument Record is correct and complete to the best of my knowledge and belief.

Marvin E. Seymour April 11, 1984
 Signature Date



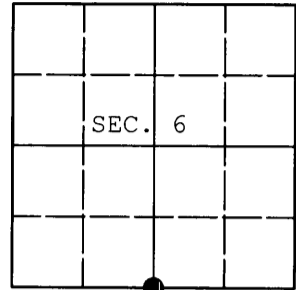
E-3

3907060020

U.S. PUBLIC LAND SURVEY MONUMENT RECORD

Note: This form is intended and designed to fulfill all requirements of Wisconsin Administrative Code, Chapter A-E 7.08 U.S. Public Land Survey Monument Record (3) (a) (b) (c) (d) (e) (f) (g) (h) (i). An additional sheet may be added if necessary to conform with said requirements.

(a) CORNER LOCATION: WISCRS (Oneida County)
 1/4 Cor. of Secs. 6 & 7 N: 256,805.56 USft
 Township 39 North E: 199,473.59 USft
 Range 7 East of the 4th P.M. Datum: NAD 1983(2011)
 Town of Woodruff County of Oneida



(b) HISTORY OF ORIGINAL CORNER ESTABLISHMENT

Original Surveyor: _____ Original Accessories: _____
 Date of Survey: Commenced: _____
 Completed: _____

(b) (f) (g) (h) Description of monument found at this corner and if it was accepted, state all evidence (material, testimonial, occupational, plats, records, other monuments) used as a basis for accepting. If not accepted or if nothing was found, state evidence used as basis for establishing location. If re-established through lost corner proportionate methods, indicate all monuments, distances and directions used to establish. Indicate type of monument and sign post found or set.

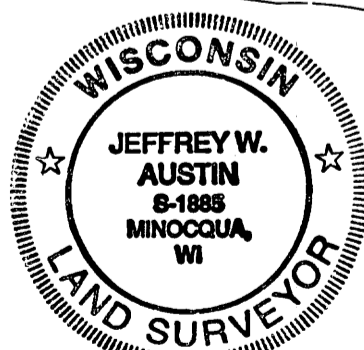
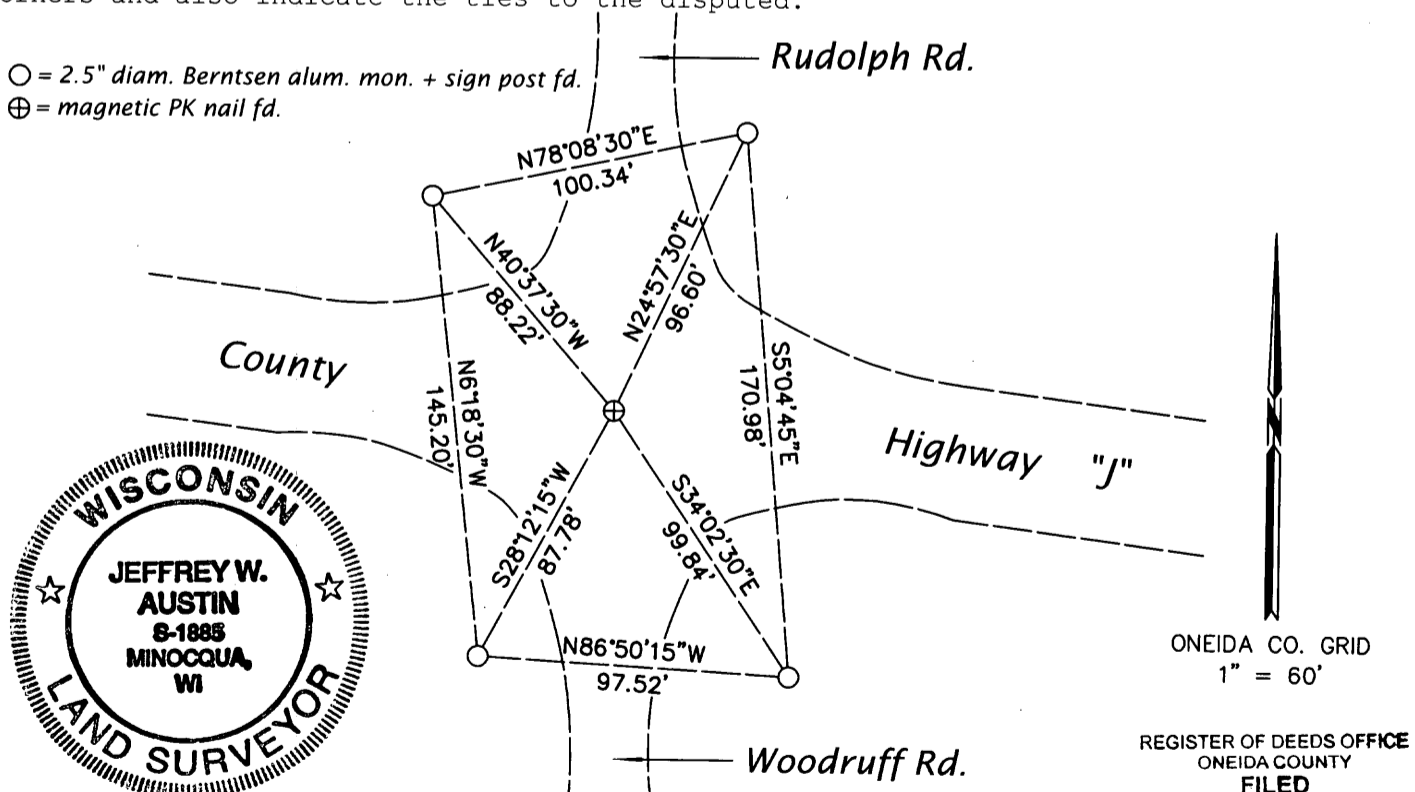
NOTE: This is a perpetuation of a previous USPLS Monument Record by Marvin E. Seymour, RLS dated April 11, 1984 and filed in the office of the Oneida County Register of Deeds. A complete history of the corner can be found on the previous monument record. I accept the previous location as a true and faithful perpetuation or reestablishment of the original corner location and further perpetuate it as follows.

June 13, 2014: I found and accepted a magnetic PK nail used in recent surveys in the area. The location of the nail closely matches the grid coordinates on the Highway J right-of-way plat and the location of Seymour's corner in his survey of T39N, R7E. I found Berntsen witness monuments of unknown origin as shown below.

The coordinates shown were derived from a direct RTN GPS observation referenced to the WISCORS network.

(c) (d) (e) Plan view of corner with ties to at least 4 witness monuments. If in disagreement with previously established corner, show the distances between the two corners and also indicate the ties to the disputed.

○ = 2.5" diam. Berntsen alum. mon. + sign post fd.
 ⊕ = magnetic PK nail fd.



ONEIDA CO. GRID
 1" = 60'

REGISTER OF DEEDS OFFICE
 ONEIDA COUNTY
 FILED

JUL 03 2014

AT _____ O'CLOCK _____ M
 KYLE J. FRANSON
 REGISTER OF DEEDS

(i) I, Jeffrey W. Austin, Registered Land Surveyor No. S-1885, hereby certify that the corner location on this record was determined by me or under my direction and control and that this U.S. Public Land Survey Monument Record is correct and complete to the best of my knowledge and belief.

Signature _____ Date JUNE 28, 2014