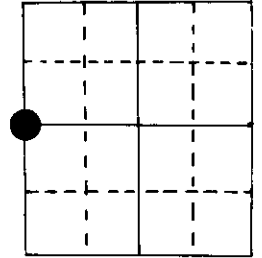


U.S. PUBLIC LAND SURVEY MONUMENT RECORD

Note: This form is intended and designed to fulfill all requirements of Wisconsin Administrative Code, Chapter A-E 5.02, U.S. Public Land Survey Monument Record (3) (a) (b) (c) (d) (e) (f) (g) (h) (i). An additional sheet may be added if necessary to conform with said requirements.

(a) Corner location: Township 39 North
 Range 7 East ~~West~~

Town/~~City/Village~~ of Woodruff
 County Oneida



W 1/4 Section 5

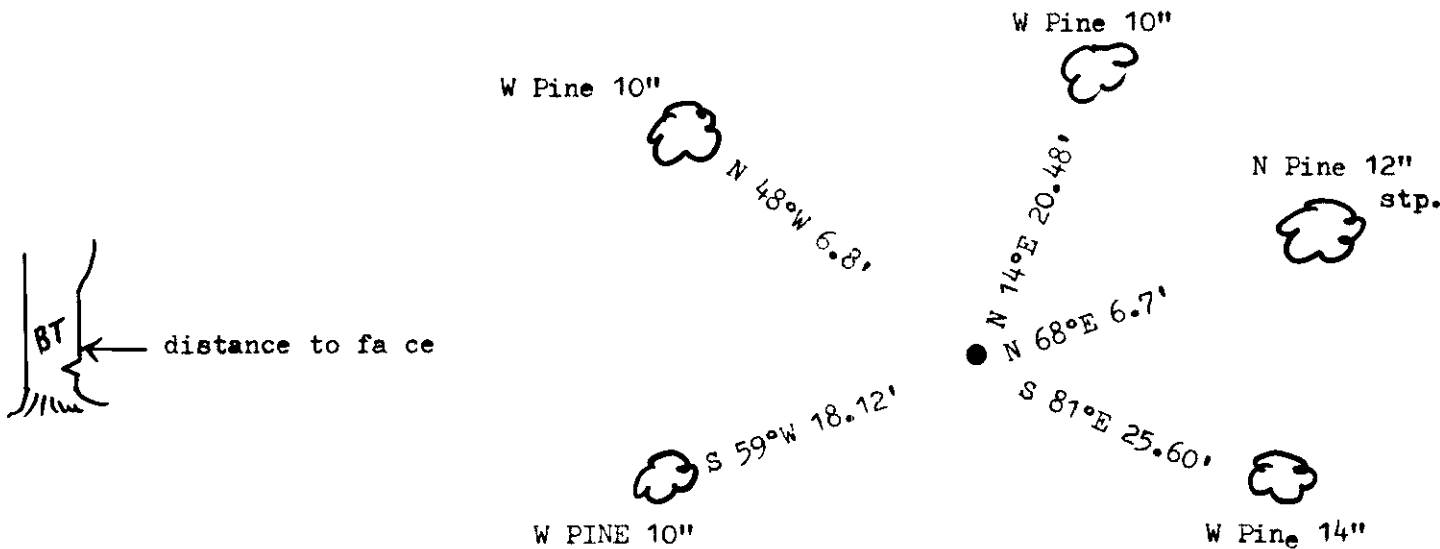
1 1/4" iron pipe

(b) (f) (g) (h) Description of monument found at this corner and if it was accepted, state all evidence (material, testimonial, occupational, plats, records, other monuments) used as a basis for accepting. If not accepted or if nothing was found, state evidence used as basis for establishing location. If reestablished through lost corner proportionate methods, indicate all monuments, distances and directions used to establish.

Original Alex Anderson Sept 1863. OBT's PW 6" N 73°E 24.1ks, PW 8" S 79 1/2°W 35 lks

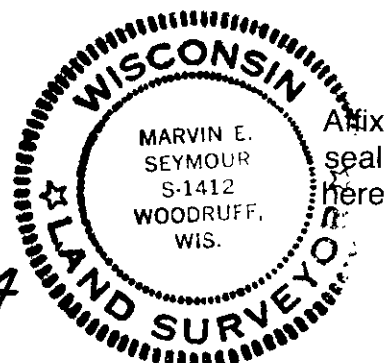
I found i.p. (set by unknown) on 8/23/82. BT's PW 10" N 48°W 6.8', PN 12" N 68°E 6.7' (stp)
 On March 1984 made new BT's PW 10" N 14°E 20.48'
 PW 14" S 81°E 25.60'
 PW 10" S 59°W 18.12'

(c) (d) (e) Plan view of corner with ties to at least 4 witness monuments. If in disagreement with previously established corner, show the distances between the two corners and also indicate the ties to the disputed corner.



(i) I, Marvin E. Seymour
 (type or print name) certify that the corner location on this record was determined by me or under my direction and control and that this U.S. Public Land Survey Monument Record is correct and complete to the best of my knowledge and belief.

Marvin E. Seymour April 11, 1984
 Signature Date



C-5

3907062000

MAY 16 2023

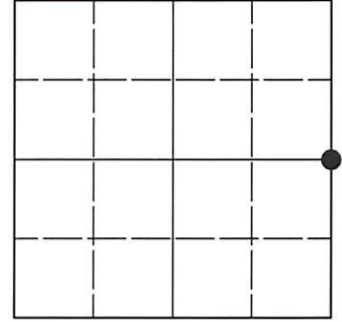
KYLE J. FRANSON
REGISTER OF DEEDS

U.S. PUBLIC LAND SURVEY MONUMENT RECORD

Note: This form is intended and designed to fulfill all requirements of Wisconsin Administrative Code, Chapter A-E 7.08 U.S. Public Land Survey Monument Record (3)(a-i).

(a) CORNER LOCATION
1/4 Cor. of Secs. 5 & 6
Township 39 North
Range 7 East of the 4th P.M.
Town of Woodruff
County of Oneida

WISCRS - Oneida County
N: 259,497.82 USft
E: 202,249.56 USft
Datum: NAD 83(2011) ep. 2010.00
GNSS Method: RTN - Offset
GNSS Control: WISCORS VRS



Sec. 6, T. 39 N., R. 7 E.

(b)(f)(g)(h) Description of monument found at this corner and if it was accepted, state all evidence (material, testimonial, occupational, plats, records, other monuments) used as a basis for accepting. If not accepted or if nothing was found, state evidence used as basis for establishing location. If re-established through lost corner proportionate methods, indicate all monuments, distances and directions used to establish. Indicate type of monument and sign post found or set.

This record is a perpetuation of the following land corner document(s):

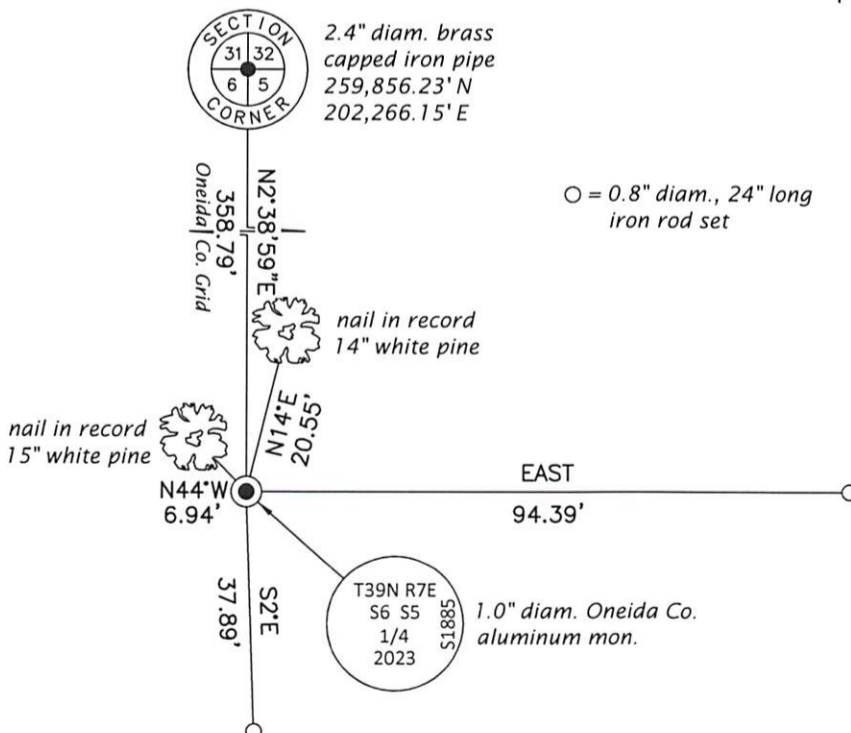
April 11, 1984: USPLS Monument Record by Marvin E. Seymour, filed in Oneida County

A complete history of the corner can be found on the previous land corner document(s). I accept the record activity as a true and faithful perpetuation or reestablishment of the original corner location and further perpetuate it as described below.

April 15, 2023: I found and accepted the record monument, a 1.7" o.d., 23" long iron pipe, slightly bent, flush with the ground surface. The record bearing tree at S59°W is standing dead. The record bearing tree at S81°E is actually a red pine. At the corner point, I set a 1.0" diam., 30" long aluminum pipe with a 2.5" diam. Oneida Co. aluminum cap flush with the ground surface. I found or established accessories as indicated below. I set a white vinyl sign post bearing North, 1.0 ft.

The coordinate value shown has been determined by traversing from two or more GNSS offset points satisfying the accuracy requirements defined and qualified in the 2022 Oneida County Fee Schedule for USPLS Corners.

(c)(d)(e) Plan view of corner with ties to at least 4 witness monuments. If in disagreement with previously established corner, show the distances between the two corners and also indicate the ties to the disputed.



REGISTER OF DEEDS OFFICE
ONEIDA COUNTY
FILED

MAY 16 2023

KYLE J. FRANSON
REGISTER OF DEEDS

(i) I, Jeffrey W. Austin, Professional Land Surveyor No. S-1885, hereby certify that the corner location on this record was determined by me or under my direction and control and that this U.S. Public Land Survey Monument Record is correct and complete to the best of my knowledge and belief.

 MAY 1, 2023
Signature Date