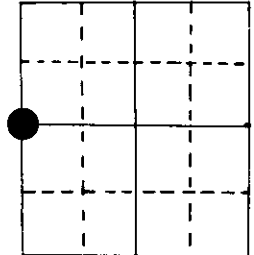


# U.S. PUBLIC LAND SURVEY MONUMENT RECORD

Note: This form is intended and designed to fulfill all requirements of Wisconsin Administrative Code, Chapter A-E 5.02, U.S. Public Land Survey Monument Record (3) (a) (b) (c) (d) (e) (f) (g) (h) (i). An additional sheet may be added if necessary to conform with said requirements.

(a) Corner location: Township 39 North  
 Range 7 East ~~West~~

Town/ ~~Village~~                      of Woodruff  
 County Oneida



W 1/4 Section 8

2" iron pipe in black top

(b) (f) (g) (h) Description of monument found at this corner and if it was accepted, state all evidence (material, testimonial, occupational, plats, records, other monuments) used as a basis for accepting. If not accepted or if nothing was found, state evidence used as basis for establishing location. If reestablished through lost corner proportionate methods, indicate all monuments, distances and directions used to establish.

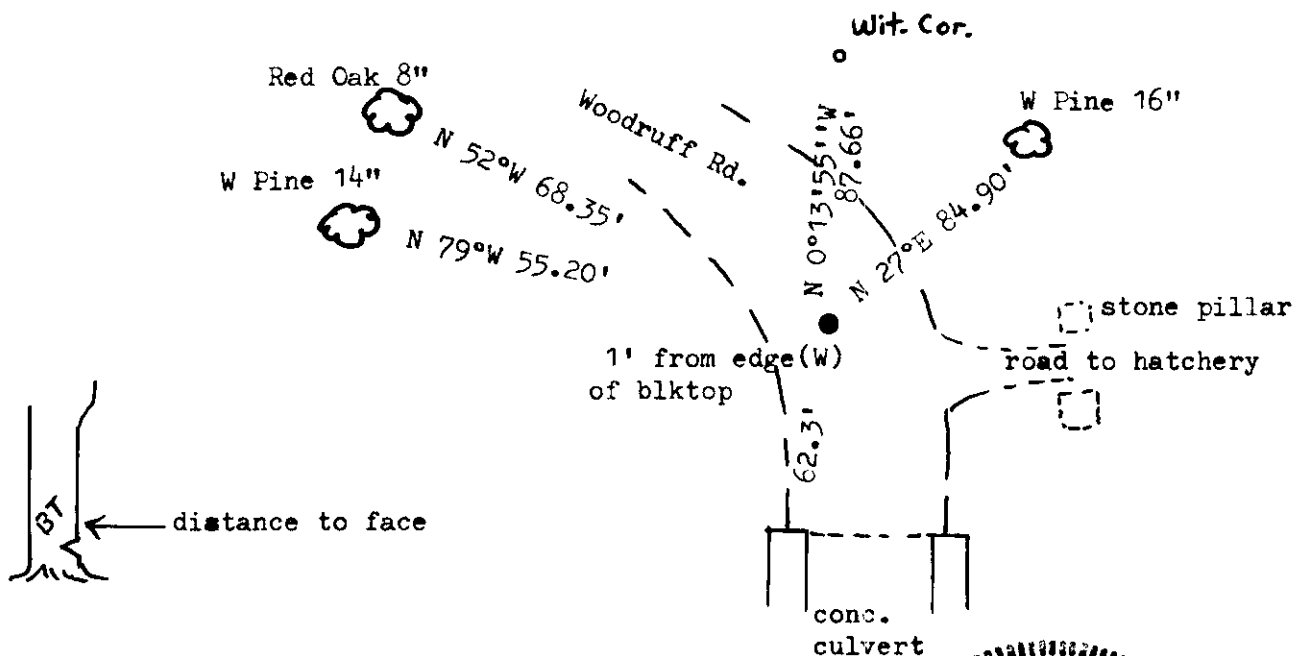
Original Alex Anderson Sept 1863. OBT's BW 7" S89 1/2°W 10 lks, Heml 10" S 4°E 32 lks

Dorr on 12/3/07 at 2.005 west of thorofare, 40.21 south of N W cor.  
 BT's Hem stp 10" S 10°E 0.122 ch, Pine stp 24" N 45°E 25 lks

J. Fisher (NORTHWOODS) in 1967 found i.p. in rd. Refs. West wall Hwy culvert (NE cor cap) S 9°06'E 0.944 ch  
 N W cor water of south gate post N 84°45'E 0.941 ch

I found i.p. in rd. on 7/23/82.  
 Made new BT's PW 14" N 79°W 55.20', OR 8" N 52°W 68.35', PW 162 N27°E 84.90'  
 Witness cor 1" i.p. is in parking area.  
 BT's for WIT cor  
 PW 16" S 82°E 22.83'  
 PW 16" N 29°E 38.97'

(c) (d) (e) Plan view of corner with ties to at least 4 witness monuments. If in disagreement with previously established corner, show the distances between the two corners and also indicate the ties to the disputed corner.



(i) I, Marvin E. Seymour  
 (type or print name) certify that the corner location on this record was determined by me or under my direction and control and that this U.S. Public Land Survey Monument Record is correct and complete to the best of my knowledge and belief.

Marvin E. Seymour April 11, 1984  
 Signature Date



6-5

3907072000

# U.S. PUBLIC LAND SURVEY MONUMENT RECORD

REGISTER OF DEEDS OFFICE  
ONEIDA COUNTY  
FILED

Note: This form is intended and designed to fulfill all requirements of the Wisconsin Administrative Code, Chapter A-E 7.08 U.S. Public Land Monument Record (3)(a)(b)(c)(d)(e)(f)(g)(h)(i). An additional sheet may be added if necessary to conform with said requirements.

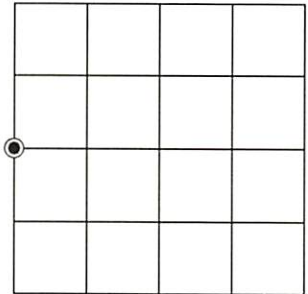
DEC 12 2023

KYLE J. FRANSON  
REGISTER OF DEEDS

(a) CORNER LOCATION: WISCRS - Oneida County  
West Quarter corner of Section 8 North: 254,039.74 USft  
Township 39 North East: 202,133.45 USft  
Range 7 East Datum: NAD 83(2011) ep. 2010.00  
Town of Woodruff GNSS Method: RTN - Direct  
County of Oneida GNSS Control: WISCRS VRS

(RECORDING AREA)

SECTION 8



(b) HISTORY OF ORIGINAL CORNER ESTABLISHMENT

Original Surveyor:  
Date of Survey: Commenced  
Completed  
Original B.T.'S

SEE PREVIOUS U.S.P.L.S. MONUMENT  
RECORD DATED APRIL 11, 1984

(f)(g)(h) DESCRIPTION OF MONUMENT FOUND AT THIS CORNER AND IF IT WAS ACCEPTED, STATE ALL EVIDENCE (MATERIAL, TESTIMONIAL, OCCUPATIONAL, PLATS, RECORD, OTHER MONUMENTS) USED AS A BASIS FOR ESTABLISHING LOCATION. IF NOT ACCEPTED OR IF NOTHING WAS FOUND, STATE EVIDENCE USED AS BASIS FOR ESTABLISHING LOCATION. IF REESTABLISHED THROUGH LOST CORNER PROPORTIONATE METHODS, INDICATE ALL MONUMENTS, DISTANCES AND DIRECTIONS USED TO ESTABLISH. INDICATE TYPE OF MONUMENT AND SIGN POST FOUND OR SET.

This is a perpetuation of a previous U.S.P.L.S. Monument Record by Marvin E. Seymour, RLS-1412, dated April 11, 1984, and filed in the office of the Oneida County Register of Deeds. A complete history of the corner can be found on the previous monument record. I accept the previous location as a true and faithful perpetuation or reestablishment of the original corner location and further perpetuate it as follows.

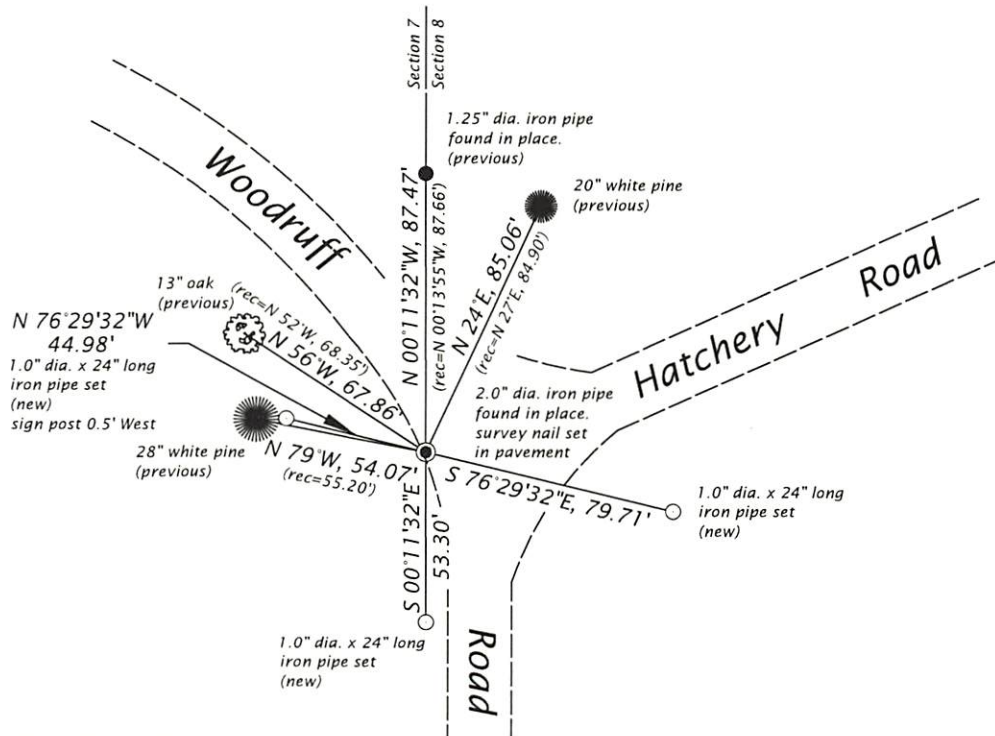
May 21, 2021, James D. Rein, PLS No. S-1234, we found and I accepted a 2" dia. iron pipe in the pavement of Woodruff Road referenced by Seymour's 1.25" dia iron pipe and three bearing trees. Because of scheduled road construction, we placed additional reference pipes as shown in this plan.

September 1, 2022, James D. Rein, post construction, we returned and placed a survey marker nail in the pavement to monument the corner position.

(c)(d)(e) PLAN VIEW OF CORNER WITH TIES TO AT LEAST 4 WITNESS MONUMENTS. IF IN DISAGREEMENT WITH PREVIOUSLY ESTABLISHED CORNER, SHOW THE DISTANCE BETWEEN THE TWO CORNERS AND ALSO INDICATE THE TIES TO THE DISPUTED CORNER.

Bearings are  
Oneida County Grid

Scale: 1" = 60'



(i) I, JAMES D. REIN, PROFESSIONAL LAND SURVEYOR NO. S-1234 HEREBY CERTIFY THAT THE CORNER LOCATION ON THIS RECORD WAS DETERMINED BY ME OR UNDER MY DIRECTION AND CONTROL AND THAT THIS U.S. PUBLIC LAND SURVEY MONUMENT RECORD IS CORRECT AND COMPLETE TO THE BEST OF MY KNOWLEDGE AND BELIEF

*James D. Rein*  
SIGNATURE

12/20/22  
DATE



INDEX NO. G - 5  
3907072000