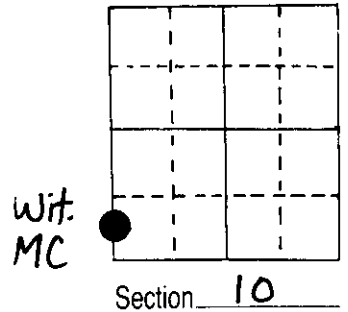


U.S. PUBLIC LAND SURVEY MONUMENT RECORD

Note: This form is intended and designed to fulfill all requirements of Wisconsin Administrative Code, Chapter A-E 5.02, U.S. Public Land Survey Monument Record (3) (a) (b) (c) (d) (e) (f) (g) (h) (i). An additional sheet may be added if necessary to conform with said requirements.

(a) Corner location: Township 39 North
 Range 7 East ~~500~~

Town ~~City Village~~ of Woodruff
 County Oneida



2" iron pipe with W.C.D. brass cap

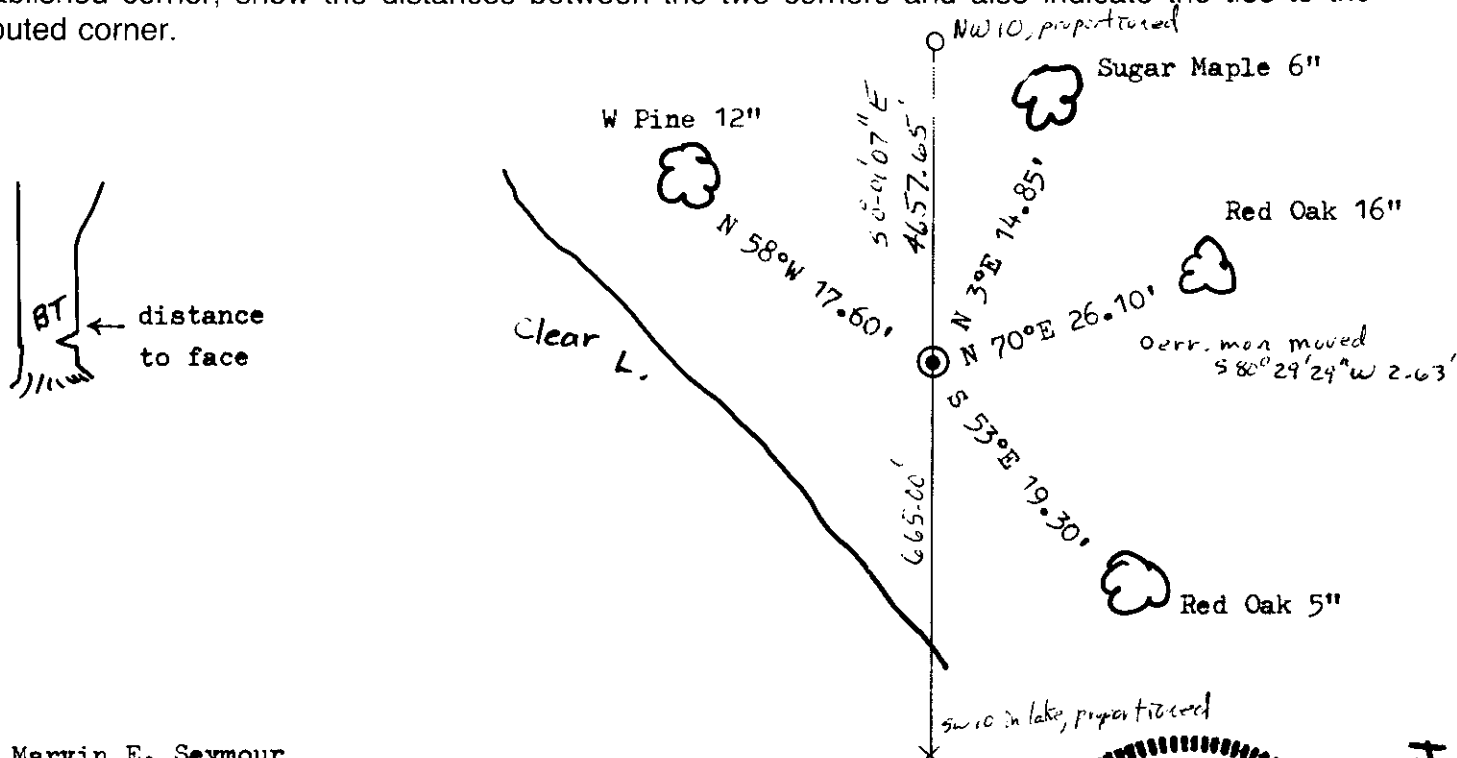
(b) (f) (g) (h) Description of monument found at this corner and if it was accepted, state all evidence (material, testimonial, occupational, plats, records, other monuments) used as a basis for accepting. If not accepted or if nothing was found, state evidence used as basis for establishing location. If reestablished through lost corner proportionate methods, indicate all monuments, distances and directions used to establish.

Original Alex Anderson Sept 1863. OBT's PY 20" S 81°E 13 lks, BW 6" N 7°W 18 lks at 30.40 ch south of 1/4 cor.

Vaughn 11/8/01 at 69.83 south of NW cor fell 33 east of M.C. Found OBT PN down. Set post & made new BT PN 9" N 30°W 0.070 ch.

Seymour & Freund on 9/29/83 reset WCD pipe. Made BT's. Berndt's monuments in Sec. 4,9,10 were proportioned wrong.

(c) (d) (e) Plan view of corner with ties to at least 4 witness monuments. If in disagreement with previously established corner, show the distances between the two corners and also indicate the ties to the disputed corner.



(i) I, Marvin E. Seymour
 (type or print name) certify that the corner location on this record was determined by me or under my direction and control and that this U.S. Public Land Survey Monument Record is correct and complete to the best of my knowledge and belief.

Marvin E. Seymour April 13, 1984
 Signature Date



3907090500

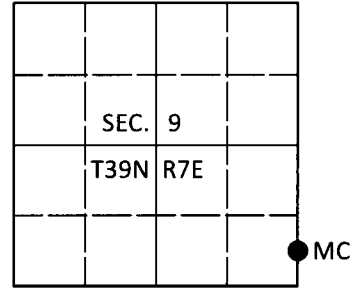
H, 5-13

U.S. PUBLIC LAND SURVEY MONUMENT RECORD

Note: This form is intended and designed to fulfill all requirements of Wisconsin Administrative Code, Chapter A-E 7.08 U.S. Public Land Survey Monument Record (3)(a-i).

(a) CORNER LOCATION
 Meander Cor. of Secs. 9 & 10
 Township 39 North
 Range 7 East of the 4th P.M.
 Town of Woodruff
 County of Oneida

WISCRS - Oneida County
 N: 252,128.41 USft
 E: 212,869.99 USft
 Datum: NAD 83(2011)
 GNSS Method: RTN - Offset
 GNSS Control: WISCORS VRS



(b) HISTORY OF ORIGINAL CORNER ESTABLISHMENT

Original Surveyor:

Original Accessories:

Date of Survey Commenced:
 Completed:

See previous USPLS Monument Record

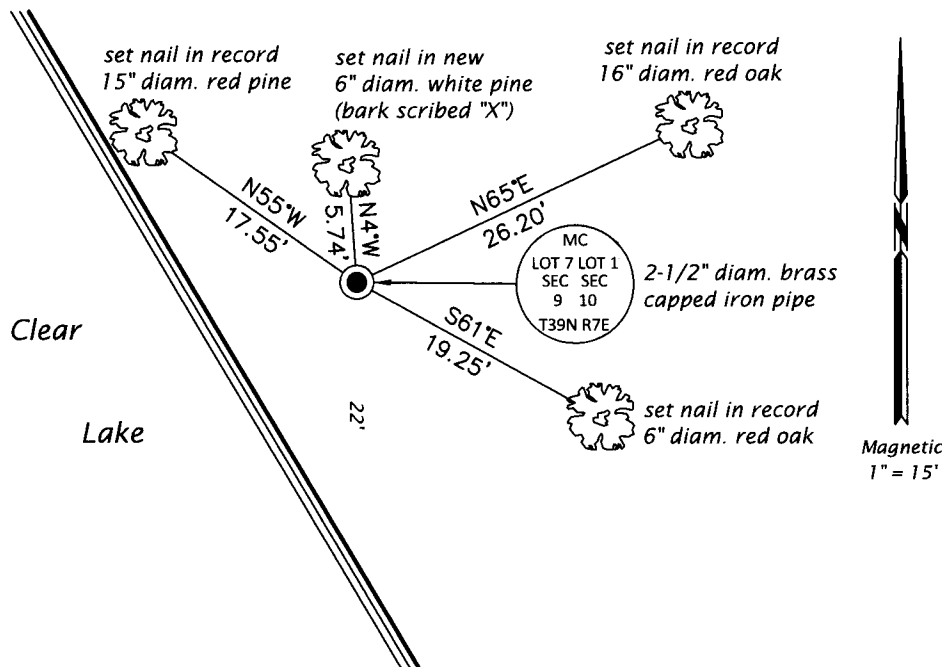
(b)(f)(g)(h) Description of monument found at this corner and if it was accepted, state all evidence (material, testimonial, occupational, plats, records, other monuments) used as a basis for accepting. If not accepted or if nothing was found, state evidence used as basis for establishing location. If re-established through lost corner proportionate methods, indicate all monuments, distances and directions used to establish. Indicate type of monument and sign post found or set.

This is a perpetuation of a previous USPLS Monument Record by Marvin E. Seymour, RLS dated Apr. 13, 1984 and filed in the office of the Oneida County Register of Deeds. A complete history of the corner can be found on the previous monument record. I accept the previous location as a true and faithful perpetuation or reestablishment of the original corner location and further perpetuate it as follows.

Jan. 13, 2019: I found and accepted the record monument, a 2-1/2" diam. iron pipe with a 3" diam. WCD brass cap projecting 16" above the ground surface. The record maple bearing tree is gone. I found or established accessories as shown below. I was unable to set a sign post due to frost.

The coordinate value shown has been verified by at least one of the following methods: 1) comparison to a previously GPS determined published value; 2) the value is the average of two or more GPS observations at a markedly different time; 3) one or more distances were measured back to the GPS observed corner from temporary GPS observed offset locations.

(c)(d)(e) Plan view of corner with ties to at least 4 witness monuments. If in disagreement with previously established corner, show the distances between the two corners and also indicate the ties to the disputed.

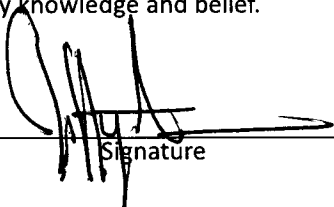


REGISTER OF DEEDS OFFICE
 ONEIDA COUNTY
 FILED

FEB 19 2019

KYLE J. FRANSON
 REGISTER OF DEEDS

(i) I, Jeffrey W. Austin, Professional Land Surveyor No. S-1885, hereby certify that the corner location on this record was determined by me or under my direction and control and that this U.S. Public Land Survey Monument Record is correct and complete to the best of my knowledge and belief.


 Signature

30 JAN 2019
 Date