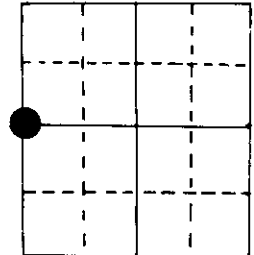


# U.S. PUBLIC LAND SURVEY MONUMENT RECORD

Note: This form is intended and designed to fulfill all requirements of Wisconsin Administrative Code, Chapter A-E 5.02, U.S. Public Land Survey Monument Record (3) (a) (b) (c) (d) (e) (f) (g) (h) (i). An additional sheet may be added if necessary to conform with said requirements.

(a) Corner location: Township 39 North  
 Range 7 East ~~5~~ St



Town/ ~~Range~~ of Woodruff

County Oneida

2" iron pipe with W.C.D. brass cap

W<sup>1</sup>/<sub>4</sub> Section 10

(b) (f) (g) (h) Description of monument found at this corner and if it was accepted, state all evidence (material, testimonial, occupational, plats, records, other monuments) used as a basis for accepting. If not accepted or if nothing was found, state evidence used as basis for establishing location. If reestablished through lost corner proportionate methods, indicate all monuments, distances and directions used to establish.

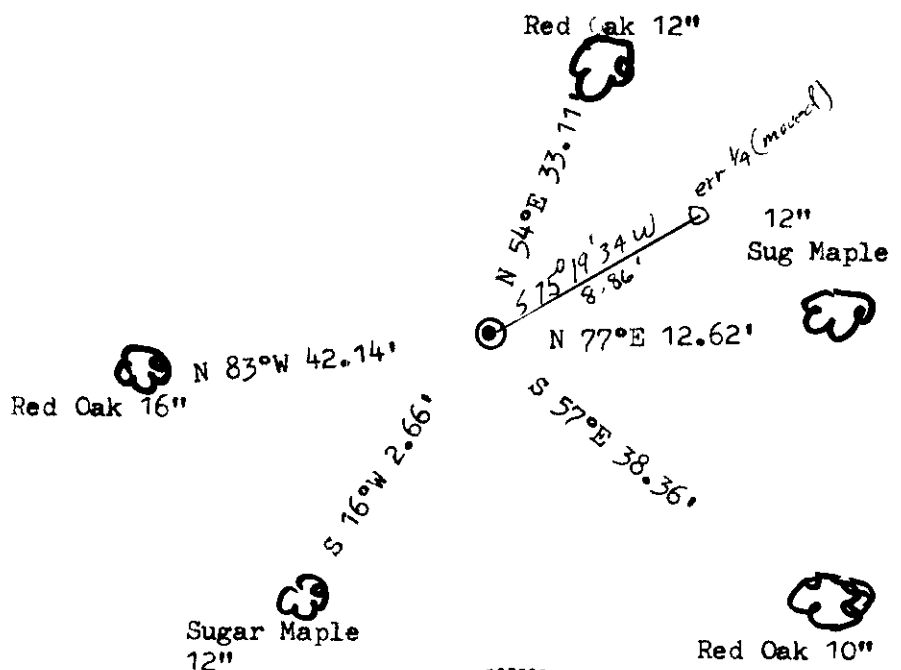
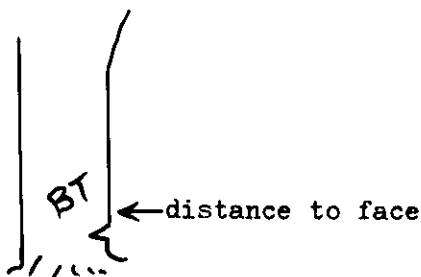
Original Alex Anderson Sept 1863. OBT's Sug 14" S 55°E 10 lks, Sug 15" S 86°W 14 lks

Vaughn on 11/8/01 set proportioned cor. ( no sign of ogl. cor.)  
 Made BT's Maple 9" S 12°W 0.435 ch, BW 10" 9°W 0.300 ch

Berndt in 4/12/61 set new proportioned <sup>1</sup>/<sub>4</sub> cor., OR 10" N 87°W 0.765 ch  
 MH 6" N 46°E 0.380 ch, MH 6" S 46°E 0.500 ch

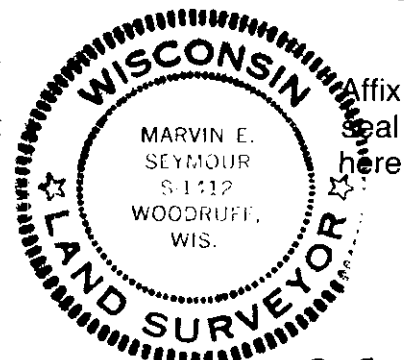
I reset cor on 5/4/84. Berndt's cor was in error because the N<sup>1</sup>/<sub>4</sub> 10 was found after he computed this cor and it was not changed.

(c) (d) (e) Plan view of corner with ties to at least 4 witness monuments. If in disagreement with previously established corner, show the distances between the two corners and also indicate the ties to the disputed corner.



(i) I, Marvin E. Seymour  
 (type or print name) certify that the corner location on this record was determined by me or under my direction and control and that this U.S. Public Land Survey Monument Record is correct and complete to the best of my knowledge and belief.

Marvin E. Seymour June 5, 1984  
 Signature Date



6-13

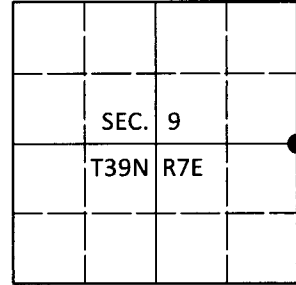
3907092000

# U.S. PUBLIC LAND SURVEY MONUMENT RECORD

Note: This form is intended and designed to fulfill all requirements of Wisconsin Administrative Code, Chapter A-E 7.08 U.S. Public Land Survey Monument Record (3)(a-i).

(a) CORNER LOCATION  
 1/4 Cor. of Secs. 9 & 10  
 Township 39 North  
 Range 7 East of the 4th P.M.  
 Town of Woodruff  
 County of Oneida

WISCRS - Oneida County  
 N: 254,124.78 USft  
 E: 212,871.59 USft  
 Datum: NAD 83(2011)  
 GNSS Method: RTN - Direct  
 GNSS Control: WISCORS VRS



(b) HISTORY OF ORIGINAL CORNER ESTABLISHMENT

Original Surveyor: \_\_\_\_\_ Original Accessories: \_\_\_\_\_  
 Date of Survey Commenced: \_\_\_\_\_ See previous monument record(s)  
 Completed: \_\_\_\_\_

(b)(f)(g)(h) Description of monument found at this corner and if it was accepted, state all evidence (material, testimonial, occupational, plats, records, other monuments) used as a basis for accepting. If not accepted or if nothing was found, state evidence used as basis for establishing location. If re-established through lost corner proportionate methods, indicate all monuments, distances and directions used to establish. Indicate type of monument and sign post found or set.

*This is a perpetuation of the following monument record(s) that comprise a complete history of the corner:*

*June 5, 1984: USPLS Monument Record No. 3907092000 by Marvin E. Seymour, PLS*

*Aug. 5, 2020: I found and accepted the record monument, a 2.4" diam. iron pipe with a 3.0" diam. WCD brass cap projecting 18" above the ground surface. I cut the record sugar maple at 2.66 ft. The other record sugar maple is in decline. I found or established accessories as shown below. I set a white vinyl sign post adjacent to the South edge of the monument.*

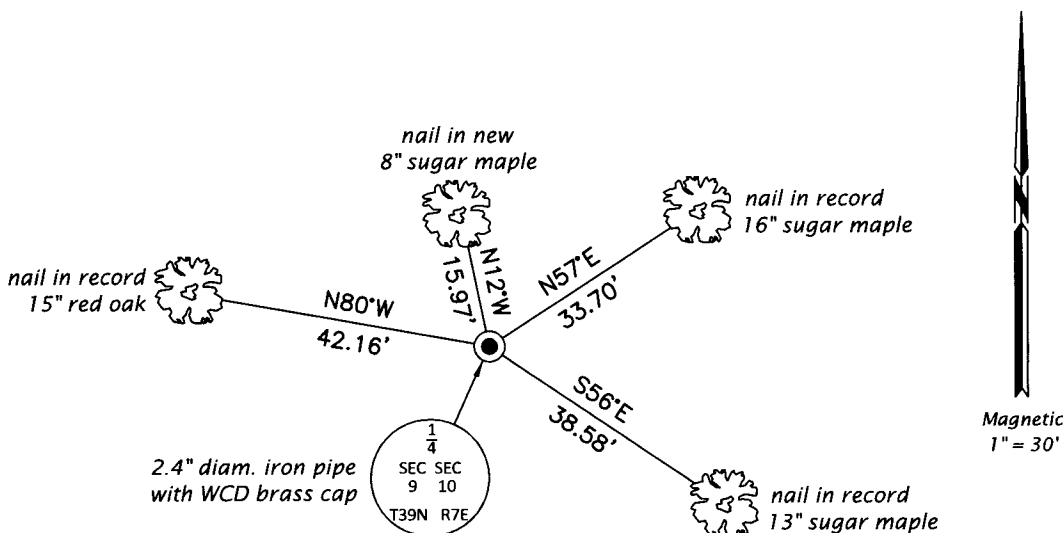
*The coordinate value shown has been verified by at least one of the following methods: 1) comparison to a previously GPS determined published value; 2) the value is the average of two or more GPS observations at a markedly different time; 3) one or more distances were measured back to the GPS observed corner from temporary GPS observed offset locations.*

REGISTER OF DEEDS OFFICE  
 ONEIDA COUNTY  
 FILED

SEP 04 2020

KYLE J. FRANSON  
 REGISTER OF DEEDS

(c)(d)(e) Plan view of corner with ties to at least 4 witness monuments. If in disagreement with previously established corner, show the distances between the two corners and also indicate the ties to the disputed.



(i) I, Jeffrey W. Austin, Professional Land Surveyor No. S-1885, hereby certify that the corner location on this record was determined by me or under my direction and control and that this U.S. Public Land Survey Monument Record is correct and complete to the best of my knowledge and belief.

\_\_\_\_\_  
 Signature Date Aug. 27, 2020