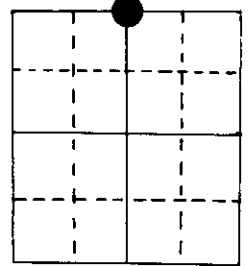


# U.S. PUBLIC LAND SURVEY MONUMENT RECORD

Note: This form is intended and designed to fulfill all requirements of Wisconsin Administrative Code, Chapter A-E 5.02, U.S. Public Land Survey Monument Record (3) (a) (b) (c) (d) (e) (f) (g) (h) (i). An additional sheet may be added if necessary to conform with said requirements.

(a) Corner location: Township 39 North  
 Range 7 East ~~1~~  
 Town ~~Woodruff~~ of Woodruff  
 County Oneida



N <sup>1</sup>/<sub>4</sub> Section 13

2" iron pipe with W.C.D. brass cap

(b) (f) (g) (h) Description of monument found at this corner and if it was accepted, state all evidence (material, testimonial, occupational, plats, records, other monuments) used as a basis for accepting. If not accepted or if nothing was found, state evidence used as basis for establishing location. If reestablished through lost corner proportionate methods, indicate all monuments, distances and directions used to establish.

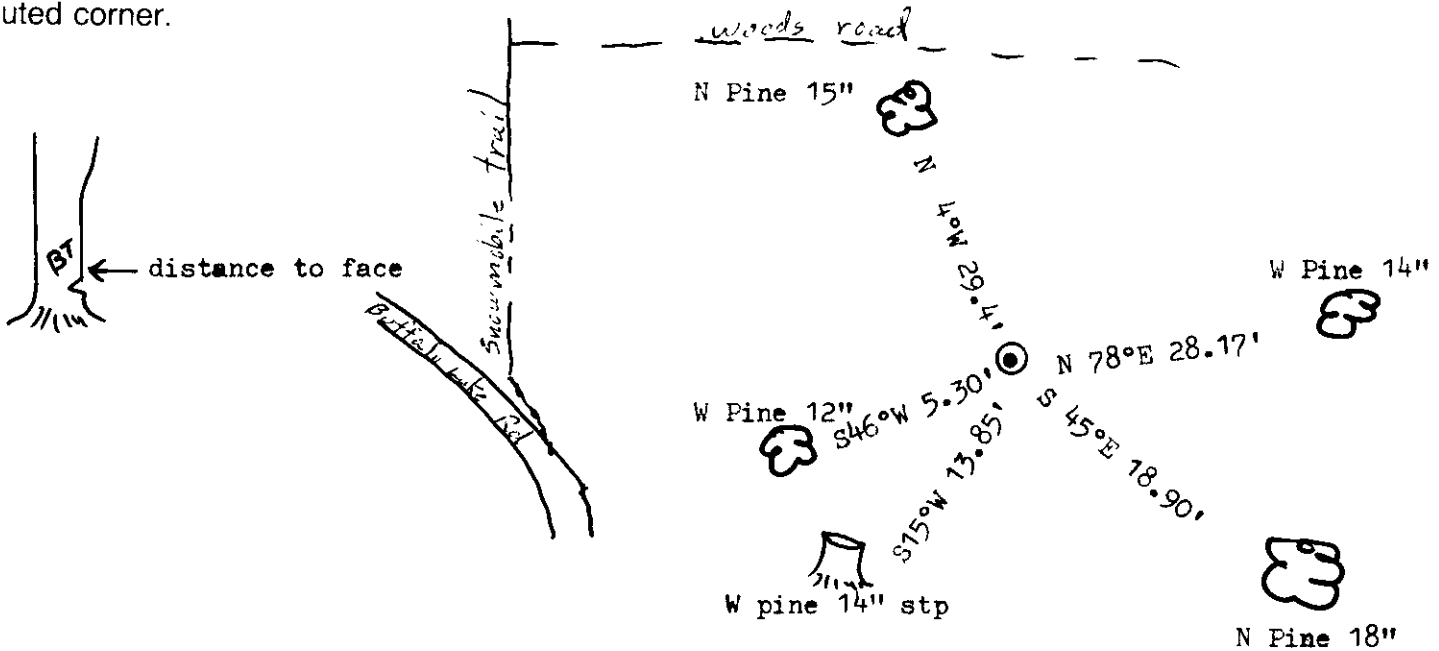
Original Alex Anderson Sept 1863. OBT's PW 16" N 18°E 12 lks, PW 14" S 27° E 27 lks

H Hall in 10/12/31 at 39.406 west of NE cor & 19.782 east of orig. M.C. , found remains of both OBT's. Set pine post, BT's PW 9" S 22°W 0.204 ch  
 PN 10" N 6°W 0.450 ch

Berndt on 4/17/61 found orig. cor. Set W.C.D. pipe, Hall's BT now PN 16" N 9°W 0.445 ch,  
 now PN 12" S 17°W 0.205 ch

I found on 5/25/82 the WCD pipe & PW stp 14" S 15°W 13.85', PN 15" N 4°W 29.4'.  
 Made three new BT's.

(c) (d) (e) Plan view of corner with ties to at least 4 witness monuments. If in disagreement with previously established corner, show the distances between the two corners and also indicate the ties to the disputed corner.



(i) I, Marvin E. Seymour  
 (type or print name) certify that the corner location on this record was determined by me or under my direction and control and that this U.S. Public Land Survey Monument Record is correct and complete to the best of my knowledge and belief.

Marvin E. Seymour April 12, 1984  
 Signature Date



T-23

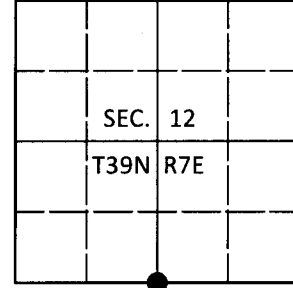
3907120020

# U.S. PUBLIC LAND SURVEY MONUMENT RECORD

Note: This form is intended and designed to fulfill all requirements of Wisconsin Administrative Code, Chapter A-E 7.08 U.S. Public Land Survey Monument Record (3)(a-i).

(a) CORNER LOCATION  
 1/4 Cor. of Secs. 12 & 13  
 Township 39 North  
 Range 7 East of the 4th P.M.  
 Town of Woodruff  
 County of Oneida

WISCORS - Oneida County  
 N: 251,666.15 USft  
 E: 226,079.20 USft  
 Datum: NAD 83(2011)  
 GNSS Method: RTN - Offset  
 GNSS Control: WISCORS VRS



(b) HISTORY OF ORIGINAL CORNER ESTABLISHMENT

Original Surveyor: \_\_\_\_\_ Original Accessories: \_\_\_\_\_

Date of Survey \_\_\_\_\_ Commenced: \_\_\_\_\_  
 Completed: \_\_\_\_\_

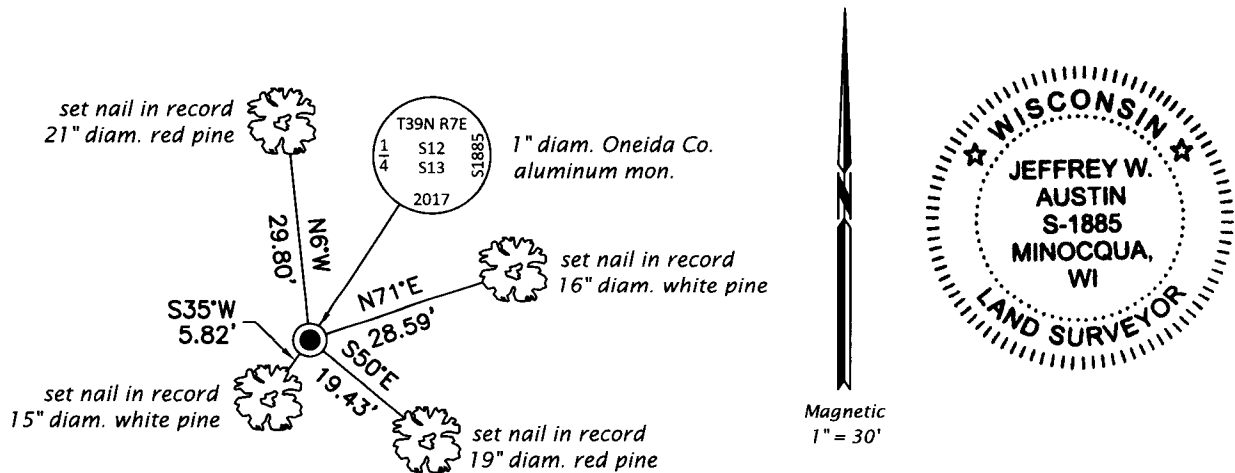
(b)(f)(g)(h) Description of monument found at this corner and if it was accepted, state all evidence (material, testimonial, occupational, plats, records, other monuments) used as a basis for accepting. If not accepted or if nothing was found, state evidence used as basis for establishing location. If re-established through lost corner proportionate methods, indicate all monuments, distances and directions used to establish. Indicate type of monument and sign post found or set.

*This is a perpetuation of a previous USPLS Monument Record by Marvin E. Seymour, RLS dated 12 Apr 1984 and filed in the office of the Oneida County Register of Deeds. A complete history of the corner can be found on the previous monument record. I accept the previous location as a true and faithful perpetuation or reestablishment of the original corner location and further perpetuate it as follows.*

*15 Nov 2017: I found and accepted the record monument, a 2-1/2" diam., 60" long iron pipe with a brass cap marked only "1/4 S." The monument was projecting 42" above the ground surface and very unstable. In its place, I set a 1" diam., 30" long aluminum pipe with a 2-1/2" diam. Oneida Co. aluminum cap flush with the ground surface. I buried a blue/black DEEP-1 magnet adjacent to the monument. I found accessories as shown below and found a white vinyl sign post bearing Northwest, 1 ft. dist.*

*The coordinate value shown has been verified by at least one of the following methods: 1) comparison to a previously GPS determined published value; 2) the value is the average of two or more GPS observations at a markedly different time; 3) one or more distances were measured back to the GPS observed corner from temporary GPS observed offset locations.*

(c)(d)(e) Plan view of corner with ties to at least 4 witness monuments. If in disagreement with previously established corner, show the distances between the two corners and also indicate the ties to the disputed.



REGISTER OF DEEDS OFFICE  
 ONEIDA COUNTY  
 FILED

JAN 02 2018

KYLE J. FRANSON  
 REGISTER OF DEEDS

(i) I, Jeffrey W. Austin, Professional Land Surveyor No. S-1885, hereby certify that the corner location on this record was determined by me or under my direction and control and that this U.S. Public Land Survey Monument Record is correct and complete to the best of my knowledge and belief.

\_\_\_\_\_  
 Signature 26 DEC 2017  
 Date