

U.S. PUBLIC LAND SURVEY MONUMENT RECORD

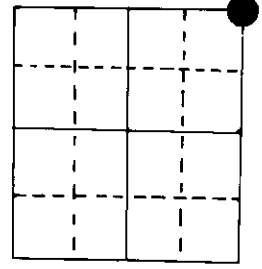
Note: This form is intended and designed to fulfill all requirements of Wisconsin Administrative Code, Chapter A-E 5.02, U.S. Public Land Survey Monument Record (3) (a) (b) (c) (d) (e) (f) (g) (h) (i). An additional sheet may be added if necessary to conform with said requirements.

(a) Corner location: Township 39 North

Range 7 East ~~11~~

Town/C ~~11~~ of Woodruff

County Oneida



NE cor Section 24

2" iron pipe

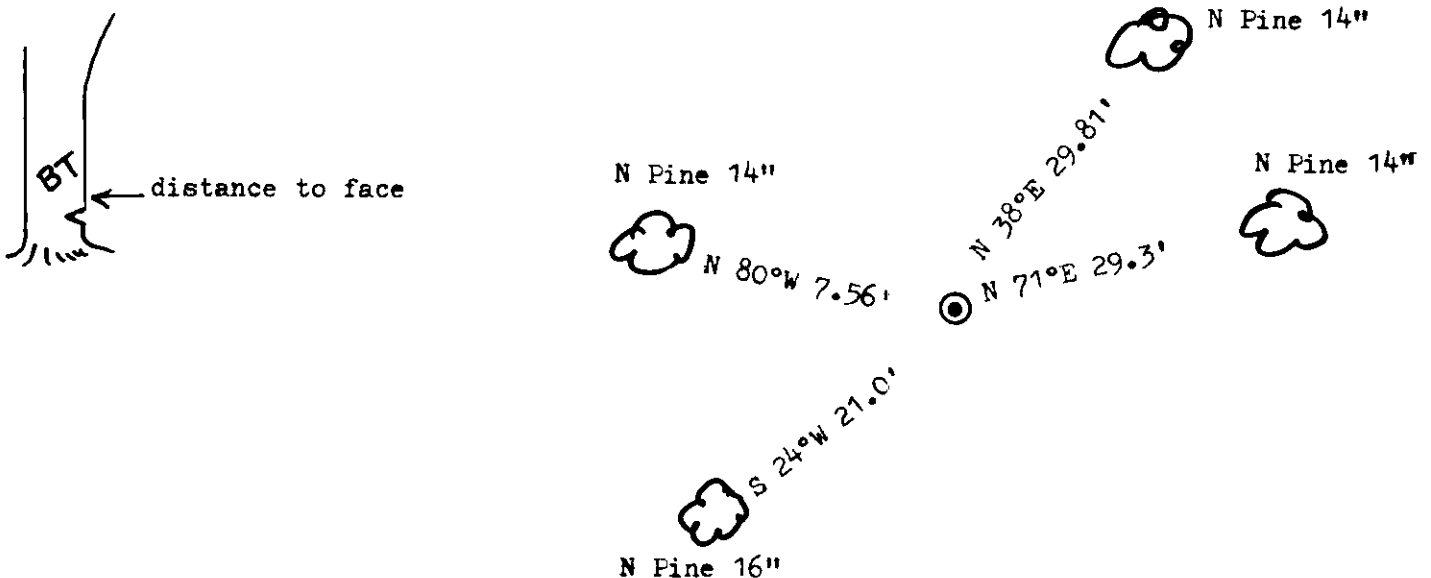
(b) (f) (g) (h) Description of monument found at this corner and if it was accepted, state all evidence (material, testimonial, occupational, plats, records, other monuments) used as a basis for accepting. If not accepted or if nothing was found, state evidence used as basis for establishing location. If reestablished through lost corner proportionate methods, indicate all monuments, distances and directions used to establish.

Original Alex Anderson Sept 1860. OBT's PY 18" S 6°E 24 lks, PW 18" S 77°W 28 lks
PY 18" N 51°E 14 lks, Tam 6" N 50°W 28 lks

Wisc. Valley Imp. at 39.623 west of N¼ & 40.367 north of W¼, found old post, orig P stp
set 2" i.p. in place of it. PN 11" S 19°W 0.318 ch N52°E 17.4 lks
PN 12" N 73°E 0.444 ch

Seymour & Vissers found on 11/19/80 a 2" i.p. & BT's. Ma de two more BT's.

(c) (d) (e) Plan view of corner with ties to at least 4 witness monuments. If in disagreement with previously established corner, show the distances between the two corners and also indicate the ties to the disputed corner.



(i) I, Marvin E. Seymour
(type or print name) certify that the corner location on this record was determined by me or under my direction and control and that this U.S. Public Land Survey Monument Record is correct and complete to the best of my knowledge and belief.

Marvin E. Seymour April 23, 1984
Signature Date



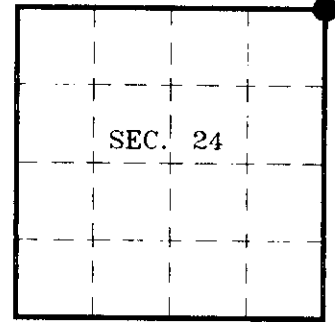
N-25

3907130000

U.S. PUBLIC LAND SURVEY MONUMENT RECORD

Note: This form is intended and designed to fulfill all requirements of Wisconsin Administrative Code, Chapter A-10.08 U.S. Public Land Survey Monument Record (3)(a)(b)(c)(d)(e)(f)(g)(h)(i). An additional sheet may be added if necessary to conform with said requirements.

(a) CORNER LOCATION: State Plane Coordinates
 Northeast corner of Section 24 X
 Township 39 North Y
 Range 7 East Datum Base
 Town of Woodruff County of Oneida



(b) HISTORY OF ORIGINAL CORNER ESTABLISHMENT

Original Surveyor: Alexander Anderson
 Date of Survey: Commenced September, 1860
 Completed September, 1860

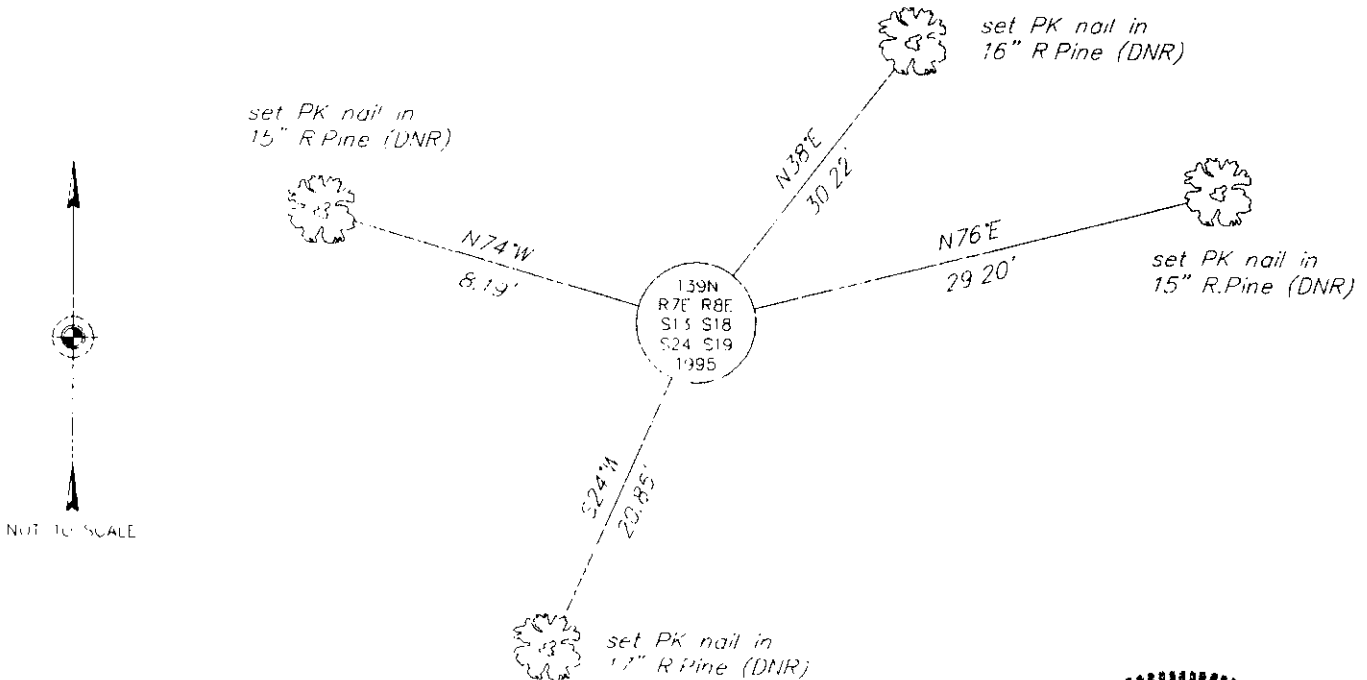
Original B.T.s
 Y.Pine 18 S6°E, 24 links
 Y.Pine 18 N51°E, 14 links
 W.Pine 18 S77°W, 28 links
 Tamarack 6 N50°W, 28 links

(b)(f)(g)(h) Description of monument found at this corner and if it was accepted, state all evidence (material, testimonial, occupational, plats, records, other monuments) used as a basis for accepting. If not accepted or if nothing was found, state evidence used as basis for establishing location. If reestablished through lost corner proportionate methods, indicate all monuments, distances and directions used to establish. Indicate type of monument and sign post found or set.

April 23, 1984: USPLS Monument Record by Marvin E. Seymour (DNR). Existing 2" iron pipe witnessed by the following accessories: N.Pine 14 N38°E, 29.81'; N.Pine 14 N71°E, 29.3'; N.Pine 14 N80°W, 7.56'; N.Pine 16 S24°W, 21.0'.

September 20, 1995: I found and accepted a 2" dia. hole in the ground witnessed by the DNR accessories as shown below. I set a 2-1/2" dia., 30" long aluminum pipe with 3-1/4" dia. Oneida Co. aluminum cap 3" above grade and marked as shown below. I set a plastic sign post North, 1-1/2 feet.

(c)(d)(e) Plan view of corner with ties to at least 4 witness monuments. If in disagreement with previously established corner, show the distances between the two corners and also indicate the ties to the disputed.



(i) I, Charles E. Winkler, Registered Land Surveyor S-1431, hereby certify that the corner location on this record was determined by me or under my direction and control and that this U.S. Public Land Survey Monument Record is correct and complete to the best of my knowledge and belief.



Charles E. Winkler 1-17-96
 Signature Date

INDEX NO. N-25

3907130000