

U.S. PUBLIC LAND SURVEY MONUMENT RECORD

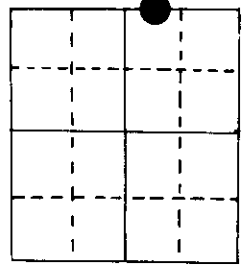
Note: This form is intended and designed to fulfill all requirements of Wisconsin Administrative Code, Chapter A-E 5.02, U.S. Public Land Survey Monument Record (3) (a) (b) (c) (d) (e) (f) (g) (h) (i). An additional sheet may be added if necessary to conform with said requirements.

(a) Corner location: Township 39 North
 Range 7 East ~~XXXXXX~~

Town/City/Village ~~XXXXXX~~ of Woodruff

County Oneida

Wit.
MC



Section 21

2" iron pipe with D.N.R. brass cap

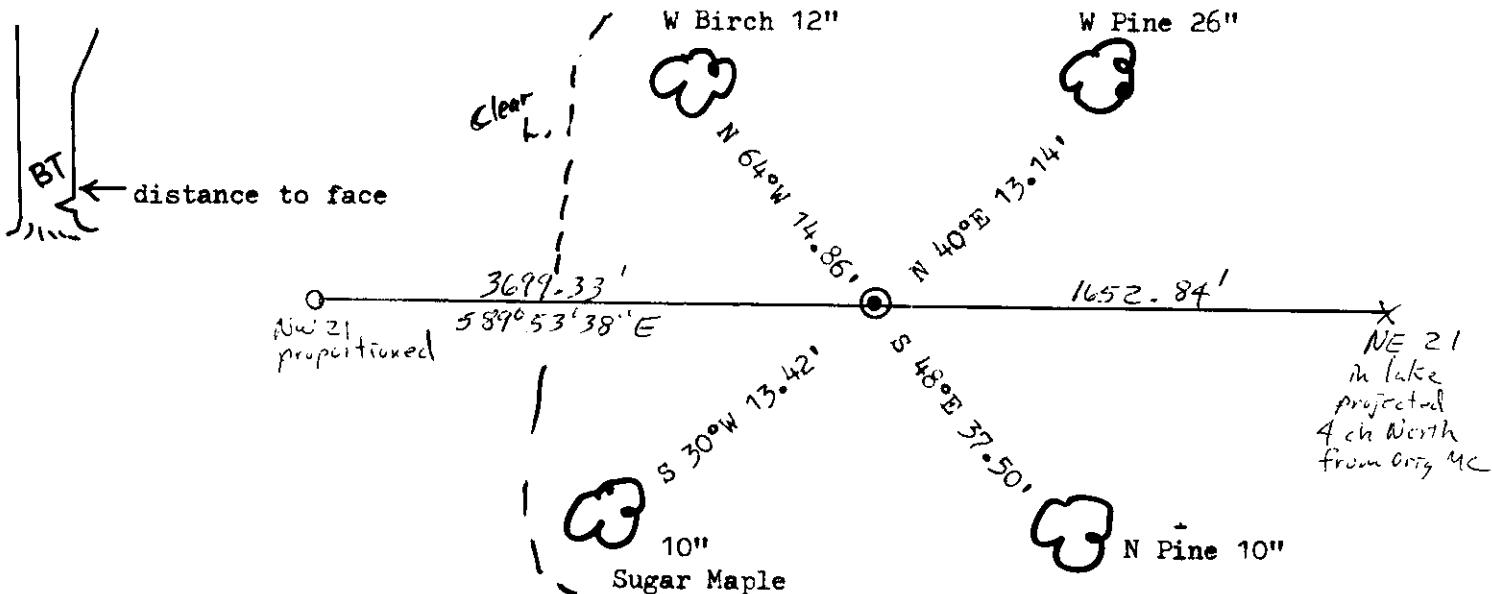
(b) (f) (g) (h) Description of monument found at this corner and if it was accepted, state all evidence (material, testimonial, occupational, plats, records, other monuments) used as a basis for accepting. If not accepted or if nothing was found, state evidence used as basis for establishing location. If reestablished through lost corner proportionate methods, indicate all monuments, distances and directions used to establish.

Original Alex Anderson Sept 1863. OBT's BW 9" S 36°E 29 lks, PW 10" N 27°E 28 lks at 48.12 ch east of NW 21.

Orig cor was out on now what is a narrow (3') strip of land that is 400 to 500' across a swa mp.

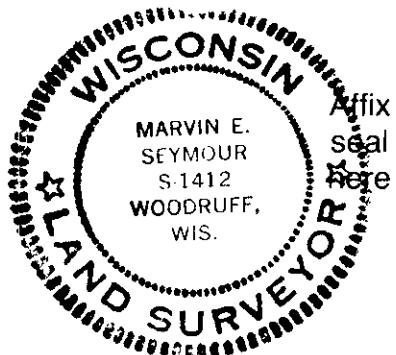
I set D.N.R. pipe on 3/1/84 on line between NW 21 and NE 21 in lake. Made BT's.

(c) (d) (e) Plan view of corner with ties to at least 4 witness monuments. If in disagreement with previously established corner, show the distances between the two corners and also indicate the ties to the disputed corner.



(i) I, Marvin E. Seymour
 (type or print name) certify that the corner location on this record was determined by me or under my direction and control and that this U.S. Public Land Survey Monument Record is correct and complete to the best of my knowledge and belief.

Marvin E. Seymour Signature April 19, 1984 Date



N-11

3907160012