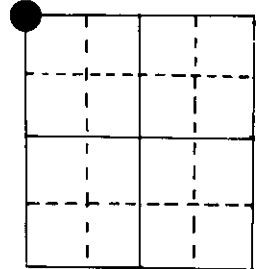


U.S. PUBLIC LAND SURVEY MONUMENT RECORD

Note: This form is intended and designed to fulfill all requirements of Wisconsin Administrative Code, Chapter A-E 5.02, U.S. Public Land Survey Monument Record (3) (a) (b) (c) (d) (e) (f) (g) (h) (i). An additional sheet may be added if necessary to conform with said requirements.

(a) Corner location: Township 39 North
 Range 7 East/~~West~~



Town ~~Oneida~~ of Woodruff
 County Oneida

2" iron pipe with D.N.R. brass cap

NW cor Section 21

(b) (f) (g) (h) Description of monument found at this corner and if it was accepted, state all evidence (material, testimonial, occupational, plats, records, other monuments) used as a basis for accepting. If not accepted or if nothing was found, state evidence used as basis for establishing location. If reestablished through lost corner proportionate methods, indicate all monuments, distances and directions used to establish.

Original Alex Anderson Sept 1863. OBT's BW 10" N 4½°E 35 lks, Fir 10" S 5°E 8 lks

I searched and found nothing so I set on 10/13/83 a D.N.R. pipe and Made BT's.

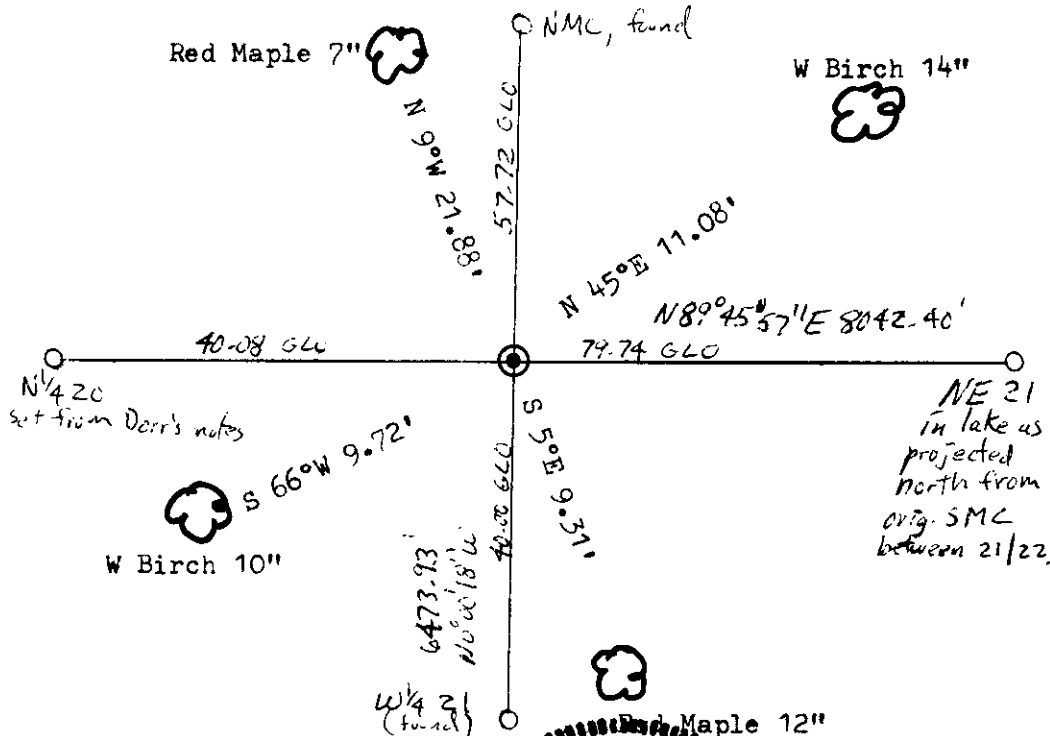
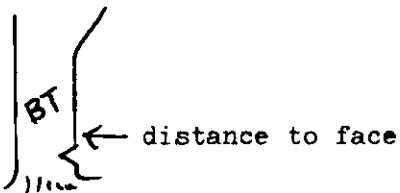
Corner computed by double proportion.

N¼ 20 to NE 21 = $\frac{40.08}{119.82} \times 8042.40'$ at the bearing and use the departure.

W¼ 21 to N_{MC} = $\frac{40.00}{97.72} \times 6473.93'$ at the bearing and use latitude.

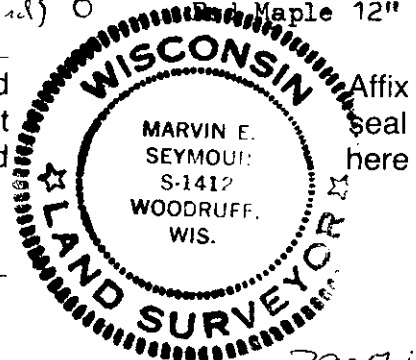
Dorr was at this cor. in 11/3/1898 but did not note any thing.

(c) (d) (e) Plan view of corner with ties to at least 4 witness monuments. If in disagreement with previously established corner, show the distances between the two corners and also indicate the ties to the disputed corner.



(i) I, Marvin E. Seymour
 (type or print name) certify that the corner location on this record was determined by me or under my direction and control and that this U.S. Public Land Survey Monument Record is correct and complete to the best of my knowledge and belief.

Marvin E. Seymour April 19, 1984
 Signature Date



3907170000

N-9