

At _____
THOMAS H. LEIGHTON
REGISTER OF DEEDS
Recorders Data

This form is intended to fulfill the requirements of Chapter A-E7.08 (3)(a) thru (i) U.S. Public Land Survey Monument Location Record, Wisconsin Administrative Code. Use the reverse side of form for continuation.

U.S. PUBLIC LAND SURVEY MONUMENT LOCATION RECORD

USPLS CORNER: N1/16NE & WIT MC SECTION: 19 TOWNSHIP: 39 NORTH RANGE: 7 EAST

NAME OF WATERWAY FOR M.C. CORNER: MID LAKE SECTION LINE: NORTH

~~(CITY/VILLAGE/TOWN)~~ OF: WOODRUFF COUNTY OF: ONEIDA

Description of monument found or placed and all other evidence used as the basis for monument location; including monuments and measurements required if the corner location was reestablished by lost corner proportionate methods. Also indicate name of the original surveyor, original survey date and the corner monument, bearing trees, witness or other reference monuments established, including measured bearing and distance ties, from available survey records.

THIS RECORD 1/16TH CORNER ALSO REFERENCED AS A WITNESS MC AS NO RECORD MC KNOWN TO EXIST ON THE EAST SHORE OF MID LAKE, APPROXIMATELY 500' WEST, BY RECORDS SEARCH OR LOCAL RLS QUERY, IN ORDER TO CONTROL THE SECTION LINE WEST OF THE NW CORNER OF SECTION 19 TO THE LAKESHORE, PER APPROVAL OF ONEIDA COUNTY SURVEYOR MICHAEL ROMPORTL.

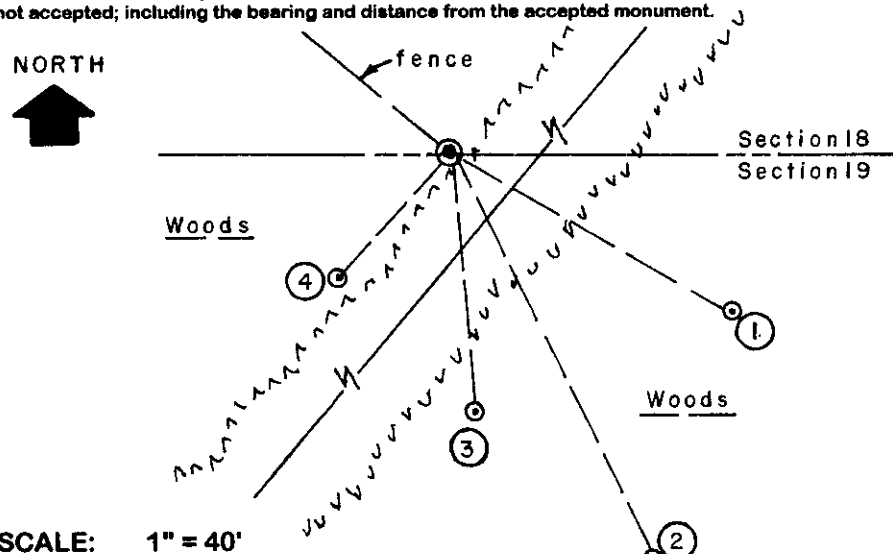
Found and accepted an old record 1" dia. axel shaft with gear top 4" up and painted red at the SE end of a woven wire fenceline leading N50°W. I pulled the 24" long axel shaft and drove a standard 2" dia. by 30" long aluminum pipe monument with stamped Oneida County cap into the plumb soil cavity left by the old axel shaft to 4" above grade; I left the old axel shaft flat on grade next to the new monument and set a standard white poly "T" marker post 4" North.

In December 1921, D.H. Vaughan notes this corner per Plat of Mid Lake Forest as filed in Cabinet 1 of Plats Sheet 152 in Oneida County records; as he often used axel shafts to monument survey corners, it is more than likely that Vaughan had set the axel shaft at this corner as found this date.

In November 1972, John Fisher/RLS 836 notes this corner as an axel shaft found in place per his Plat of Survey filed as B-411 in Oneida County survey records. In June 1992, James Rein/RSL 1234 notes this corner as a 1" dia. axel shaft found in place per his Plat of Survey filed as B-2469 in Oneida County survey records.

This recovery completed June 12, 2003; there were no direct witnesses.

Plan view map of monument location with bearing and distance ties to a minimum of four(4) described witness or reference monuments of concrete, natural stone, iron, live bearing trees or equivalent material. If applicable, also show a minimum of two(2) bearing and distance ties to any other monument found and not accepted; including the bearing and distance from the accepted monument.



WITNESS MONUMENT TIES:

- ① New 10" Mr BT S60°E 66.14'
- ② New 10" Mr BT S26°E 96.98'
- ③ New 13" Hemlock BT S05°E 54.92'
- ④ New 7" Mr BT S42°W 35.33'

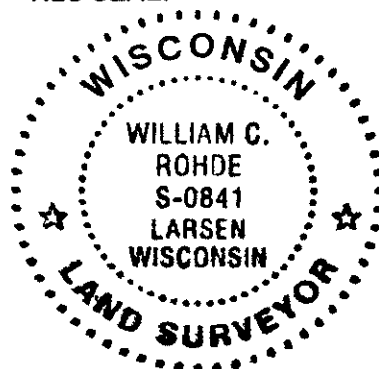
Corner falls 15'+- NW of an overhead power transmission line bearing N40°E in a cleared corridor about 25' wide thru existing woods area.

I flagged all BTs, the nonument and "T" post with blaze orange tape.

SCALE: 1" = 40'

Unless otherwise indicated, all bearing tree ties are to a .25" dia. by 2.5" long PK nail with a 1.25" dia. steel washer driven into unblazed right face and a .25" dia. by 2.5" long PK nail with a 2" dia. steel washer stamped BT is also driven into unblazed face of bearing tree at DBH; the basis for measured bearings is by compass to nearest degree and all tie distances are measured horizontal by steel tape corrected to nearest 1/100th feet at standard temperature of 68° F.

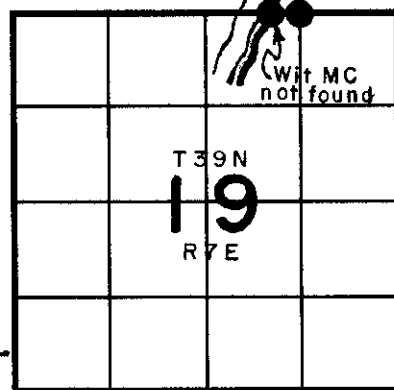
RLS SEAL:



LAND SURVEYOR CERTIFICATE:

I, William C. Rohde, hereby certify that I am duly licensed as a Professional Land Surveyor in the State of Wisconsin; that this USPLS monument location was determined by me and/or under my direct supervision and control; and that this U.S. Public Land Survey Monument Location Record is true and correct to the best of my knowledge and belief.

Signed: *William C. Rohde*
William C. Rohde RLS 841



SECTION LOCATION MAP
INDEX NO. 123-4

Date Signed: August 1, 2003

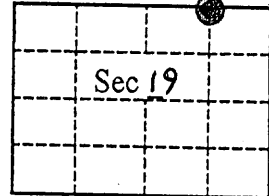
JAN 25 2013

AT _____ O'CLOCK _____ M
KYLE J. FRANSON
REGISTER OF DEEDS

U.S. PUBLIC LAND SURVEY MONUMENT RECORD

Note: This form is intended and designed to fulfill all requirements of Wisconsin Administrative Code, Chapter A-E 7.08 U.S. Land Survey Monument Record (3)(a)(b)(c)(d)(e)(f)(g)(h)(i). An additional sheet may be added if necessary to conform with said requirements.

(a) CORNER LOCATION: State Plane Coordinates
E $\frac{1}{16}$ Corner of Sec. 18 & 19 X _____
Township 39 North Y _____
Range 7 East Datum Base _____
Town Woodruff County of Oneida



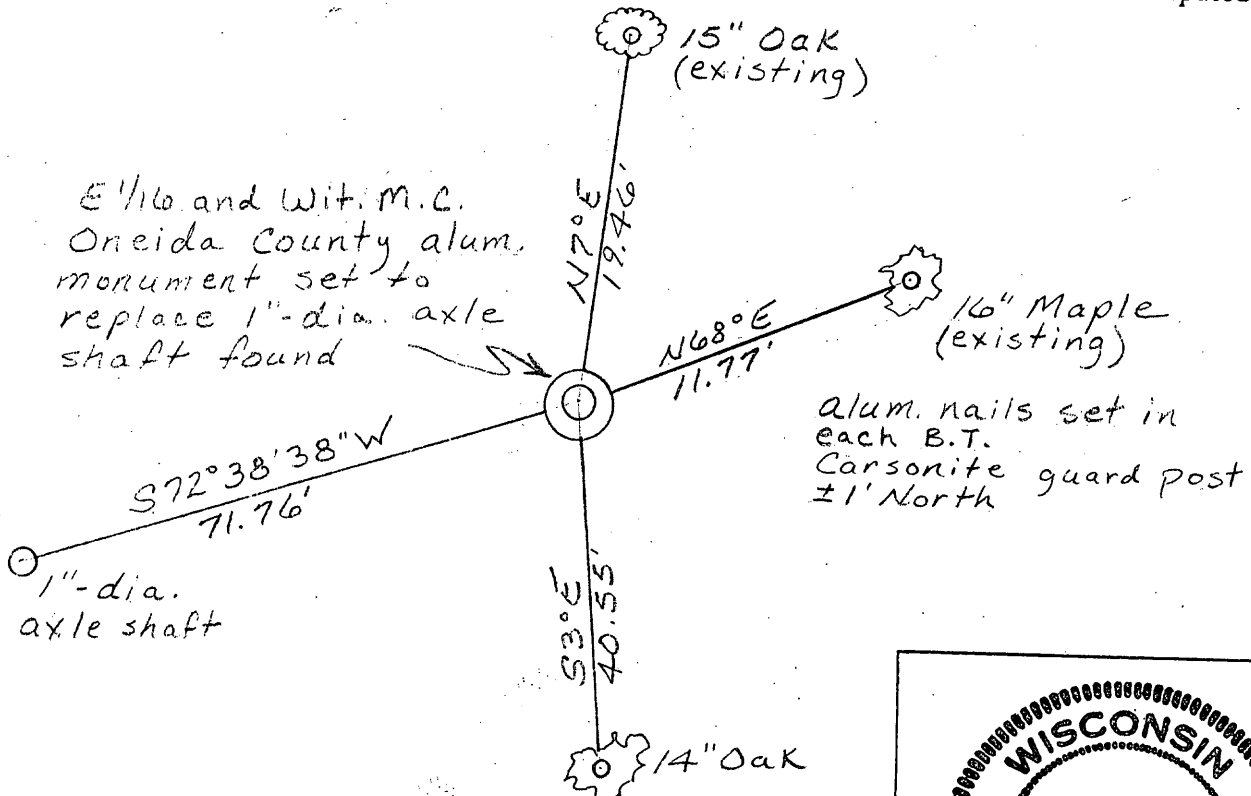
(b) HISTORY OF ORIGINAL CORNER ESTABLISHMENT Original B.T.'s

Original Surveyor: _____
Date of Survey: Commenced D. H. Vaughan
Completed 1921

(b)(f)(g)(h) Description of monument found at this corner and if it was accepted, state all evidence (material, testimonial, occupational, plats, records, other monuments) used as a basis for accepting. If not accepted or if nothing was found, state evidence used as basis for establishing location. If reestablished through lost corner proportionate methods, indicate all monuments, distances and directions used to establish. Indicate type of monument and sign post found or set.

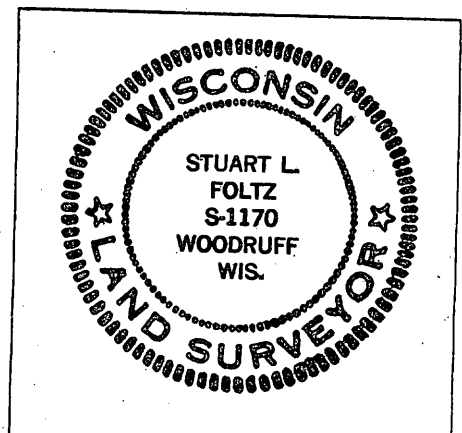
This $\frac{1}{16}$ th Corner is shown on the recorded plat of Mid Lake Forest surveyed by D.H. Vaughan in 1921. William S. Cameron recovered the corner when he surveyed the SE-SE of Section 18 in 1965. Cameron's survey map shows that the corner is an axle shaft just to the east of an overhead power line, 1332.5 feet to the west of the southeast corner of Section 18. In November, 1972 John H. Fisher notes that the corner is an axle shaft found in place on his plat of survey filed as B-411 in the Oneida County survey records. In December, 1979 James M. Marquardt notes that the corner is an axle shaft found in place 1326.53 feet to the west of the southeast corner of Section 18 on his plat of survey filed as B-351 in the Oneida County survey records. In June, 1992 James D. Rein notes that the corner is a 1"-diameter axle shaft found in place on his plat of survey filed as B-2469 in the Oneida County survey records. In August, 2003 William C. Rohde replaced an axle shaft he found on the west side of the power line with an Oneida County aluminum monument and restored it as the $\frac{1}{16}$ th Corner. In March, 2012, I surveyed and recorded Oneida County Certified Survey Map No. 4007 and used Rohde's restored $\frac{1}{16}$ th Corner and the northeast corner of Section 19 as my tie to the exterior of the NE $\frac{1}{4}$ of Section 19. Our distance from Rohde's restored $\frac{1}{16}$ th Corner to the northeast corner of Section 19 was 1395.34 feet, an overage of about 69 feet from Marquardt's 1979 distance of 1326.53 feet. Also, Rohde's corner is west of the power line, whereas Cameron's 1965 survey shows it to be east of the power line. On August 20, 2012, we found the correct axle shaft on the east side of the power line, removed the Oneida County aluminum monument that Rohde had set in 2003 at the axle shaft on the west side of the power line and replaced it with the axle shaft that had previously been in place at that location, reset the Oneida County aluminum monument to replace the axle shaft to the east of the power line, and tied the newly restored corner in to our previous survey control for Oneida County Certified Survey Map No. 4007. Our distance from this newly restored corner to the southeast corner of Section 18 is 1326.31 feet.

(c)(d)(e) Plan view of corner with ties to at least 4 witness monuments. If in disagreement with previously established corner, show the distances between the two corners and also indicate the ties to the disputed.



(i) I, Stuart L. Foltz, Registered Land Surveyor #S-1170 hereby certify that the corner location on this record was determined by me or under my direction and control and that this U.S. Public Land Survey Monument Record is correct and complete to the best of my knowledge and belief.

Signature Stuart L. Foltz Date 10/23/12
Foltz & Associates, Inc.



I
n
d
e
x

N
o.

3
9
0
7
9
8
0
0
1
0

3907980010