

U.S. PUBLIC LAND SURVEY MONUMENT RECORD

JUL 11 2017

Note: This form is intended and designed to fulfill all requirements of the Wisconsin Administrative Code, Chapter A-E 7.08 U.S. Public Land Monument Record (3)(a)(b)(c)(d)(e)(f)(g)(h)(i). An additional sheet may be added if necessary to conform with said requirements.

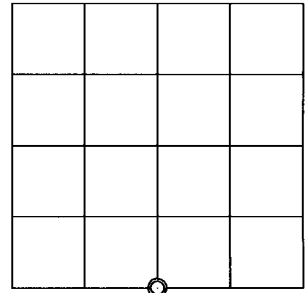
AT _____ O'CLOCK _____ M
KYLE J. FRANSON
REGISTER OF DEEDS

(a) CORNER LOCATION:
South Quarter Corner of Section 19
Township 39 North
Range 7 East
Town of Woodruff
County of Oneida

WISCRS - Oneida County
North: 240850.136 USft
East: 199648.249 USft
Latitude: 45° 50' 47.45452" N
Longitude: 89° 39' 48.72368" W
Datum: NAD 83(2011)
GNSS Method: RTK - Direct
GNSS Control: WISCORS VRS

(RECORDING AREA)

SECTION 19



(b) HISTORY OF ORIGINAL CORNER ESTABLISHMENT

Original Surveyor: Alexander Anderson
Date of Survey: Commenced September 21, 1863
Completed October 1, 1863
Original B.T.'S: Spruce 8 S 43-1/2°E 12 lks.
Spruce 5 N 43-1/2°W 22 lks.

(f)(g)(h) DESCRIPTION OF MONUMENT FOUND AT THIS CORNER AND IF IT WAS ACCEPTED, STATE ALL EVIDENCE (MATERIAL, TESTIMONIAL, OCCUPATIONAL, PLATS, RECORD, OTHER MONUMENTS) USED AS A BASIS FOR ESTABLISHING LOCATION. IF NOT ACCEPTED OR IF NOTHING WAS FOUND, STATE EVIDENCE USED AS BASIS FOR ESTABLISHING LOCATION. IF REESTABLISHED THROUGH LOST CORNER PROPORTIONATE METHODS, INDICATE ALL MONUMENTS, DISTANCES AND DIRECTIONS USED TO ESTABLISH. INDICATE TYPE OF MONUMENT AND SIGN POST FOUND OR SET.

September 21, 1925 - D. S. Burnett, Surveyor and Civil Engineer (Old Field Book 29, page 137 and Plat of Survey recorded in Volume 6 Plats, page 28 and in county surveyor's office as B2352) recovered the 1/4 corner, which was identified by one of Orig. Gov't. B.T.'s: Tam 6" N42°E, 18 lks. in pretty open marsh. Marked new B.T.'s: Spruce 6" N15°E, 106 lks.; Spruce 5" S52°E, 100 lks.; Spruce 5" S26°W, 20 lks.

October 1947 - Walter Hennig, Surveyor (Hennig Book 5, pages 33 - 41, for subdivision of Section 19, T39N, R7E) recovered the 1/4 corner, field notes describe corner monumented by an "iron pipe".

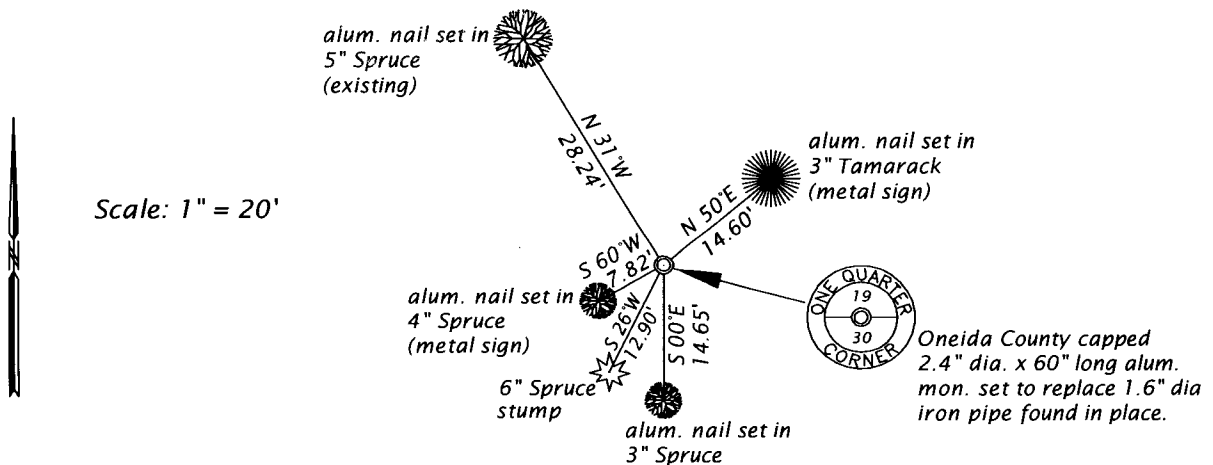
February 11, 1964 - Genisot map Dwg. No. 2698-2 (Filed as C2501 in county surveyor's office, for a survey in Sections 20, 29 & 30. T39N, R7E) identifies 1/4 corner, referenced by B.T.'s: Spruce 6" N15°E, 69.9 feet and a Spruce 5" S26°W, 13.2 feet.

June 10, 1980 - John H. Fisher, RLS No. 836 (County Plat of KEMP WOODS, located in Sections 29 and 30, T39N, R7E) describes the corner, monumented by a 1 1/2" iron pipe, referenced by a 5" Spruce S26°W, 13.0 feet and a 5" Spruce N31°W, 28.2 feet.

April 25, 1984 - Marvin Seymour, RLS No. 1412, files a USPLS Monument Record, based solely on the John Fisher record.

6/20/2017 ^{msf}
James D. Rein, PLS No. 1234, we recovered a 1.6" dia. iron pipe, referenced by Burnett's bearing tree, now a stump and Fisher's bearing tree. I accept the iron pipe as being a perpetuation of the original corner position and we placed an Oneida County capped 2.4" dia. aluminum monument over the pipe and made new reference ties as shown in the plan.

(c)(d)(e) PLAN VIEW OF CORNER WITH TIES TO AT LEAST 4 WITNESS MONUMENTS. IF IN DISAGREEMENT WITH PREVIOUSLY ESTABLISHED CORNER, SHOW THE DISTANCE BETWEEN THE TWO CORNERS AND ALSO INDICATE THE TIES TO THE DISPUTED CORNER.



(i) I, JAMES D. REIN, PROFESSIONAL LAND SURVEYOR NO. S-1234 HEREBY CERTIFY THAT THE CORNER LOCATION ON THIS RECORD WAS DETERMINED BY ME OR UNDER MY DIRECTION AND CONTROL AND THAT THIS U.S. PUBLIC LAND SURVEY MONUMENT RECORD IS CORRECT AND COMPLETE TO THE BEST OF MY KNOWLEDGE AND BELIEF.



[Handwritten Signature]

6-27-17

SIGNATURE

DATE

INDEX NO. R - 3
3907190020