

U.S. PUBLIC LAND SURVEY MONUMENT RECORD

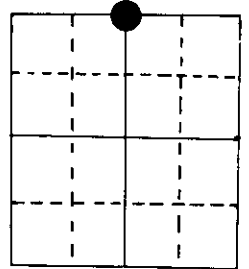
Note: This form is intended and designed to fulfill all requirements of Wisconsin Administrative Code, Chapter A-E 5.02, U.S. Public Land Survey Monument Record (3) (a) (b) (c) (d) (e) (f) (g) (h) (i). An additional sheet may be added if necessary to conform with said requirements.

(a) Corner location: Township 39 North

Range 7 East ~~2~~

Town/ ~~Woodruff~~ of Woodruff

County Oneida



$N\frac{1}{4}$ Section 26

2" iron pipe with W.C.D. brass cap (2" i.p. alongside)

(b) (f) (g) (h) Description of monument found at this corner and if it was accepted, state all evidence (material, testimonial, occupational, plats, records, other monuments) used as a basis for accepting. If not accepted or if nothing was found, state evidence used as basis for establishing location. If reestablished through lost corner proportionate methods, indicate all monuments, distances and directions used to establish.

Original Alex Anderson Sept 1863. OBT's Sugar 8" S 54°W 8 lks, Maple 8" N 49½°W 2 lks

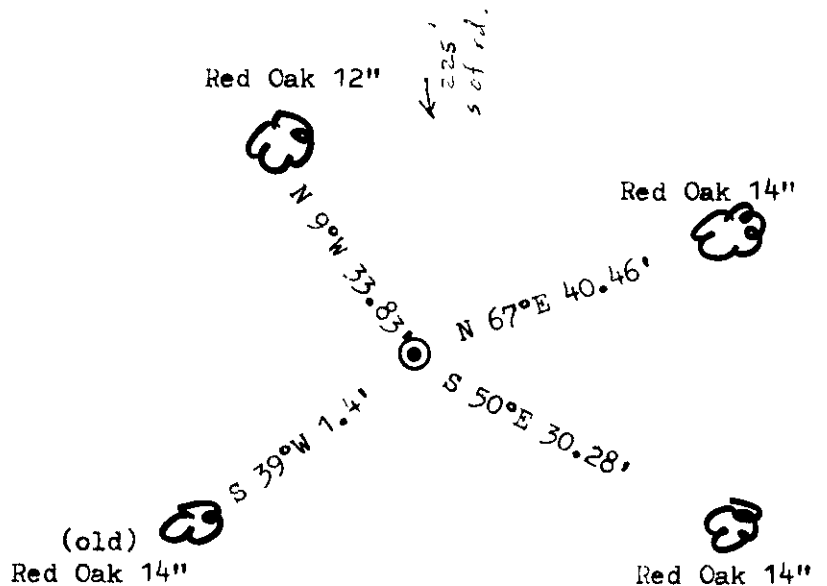
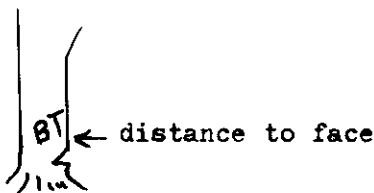
Vaughan in 8/24/13 found $N\frac{1}{4}$ cor., SW tree down & NE tree now stp., set new post in old hole. New BT PW stp 24" N 9°E 63 lks.

Aiken & Freund (DNR) in Oct. 1977 found W.C.D. pipe, BT's OR 12" N 77°E 30.3'
 BW 6" S 60°E 10.0'
 OR 14" S 32°W 1.4'

I found on 11/16/82 the W.C.D. pipe & BT OR 14" S 39°W 1.4'. Made three new BT's.

Reinhart, Nelson & Mentz (1954-55) set W.C.D. brass cap, BT's P stp 24" N 9°E .64 ch
 OR 10" S 30°W 13.8', OR 10" N 53°W 16.1', OR 7" N 72°E 30.0'

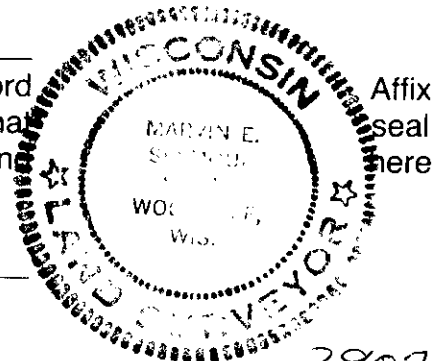
(c) (d) (e) Plan view of corner with ties to at least 4 witness monuments. If in disagreement with previously established corner, show the distances between the two corners and also indicate the ties to the disputed corner.



(i) I, Marvin E. Seymour

(type or print name) certify that the corner location on this record was determined by me or under my direction and control and that this U.S. Public Land Survey Monument Record is correct and complete to the best of my knowledge and belief.

Marvin E. Seymour April 23, 1984
 Signature Date



R-19

3907230020