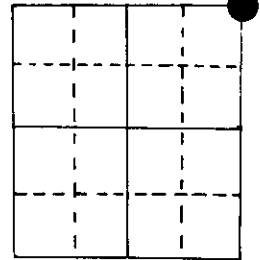


U.S. PUBLIC LAND SURVEY MONUMENT RECORD

Note: This form is intended and designed to fulfill all requirements of Wisconsin Administrative Code, Chapter A-E 5.02, U.S. Public Land Survey Monument Record (3) (a) (b) (c) (d) (e) (f) (g) (h) (i). An additional sheet may be added if necessary to conform with said requirements.

(a) Corner location: Township 39 North
 Range 7 East ~~1-2-3-4~~

Town ~~City/Village~~ of Woodruff
 County Oneida



NE cor Section 25

2" iron pipe

(b) (f) (g) (h) Description of monument found at this corner and if it was accepted, state all evidence (material, testimonial, occupational, plats, records, other monuments) used as a basis for accepting. If not accepted or if nothing was found, state evidence used as basis for establishing location. If reestablished through lost corner proportionate methods, indicate all monuments, distances and directions used to establish.

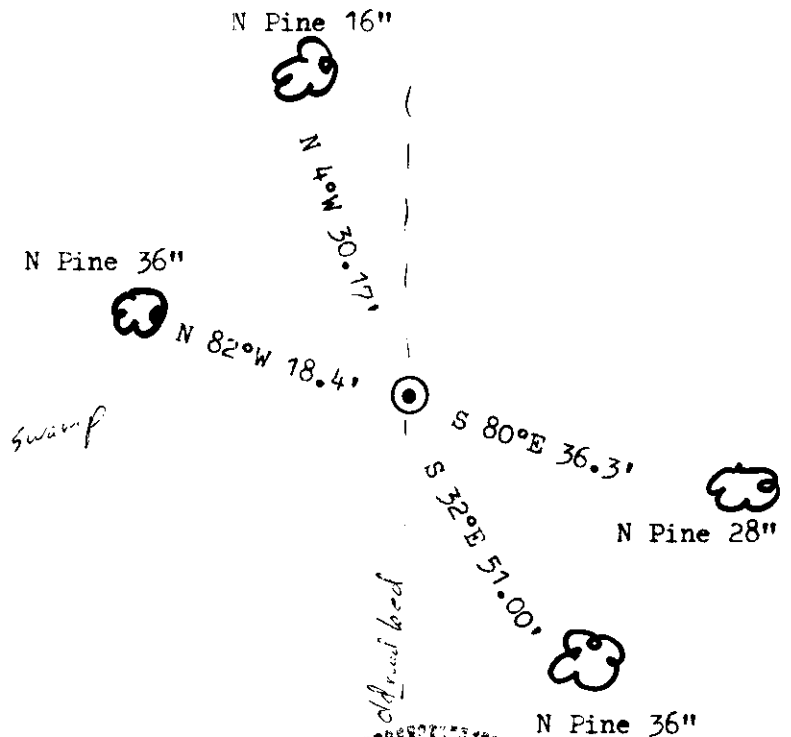
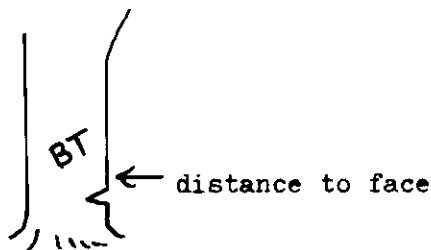
Original Alex Anderson Sept 1860. OBT's PY 20" S 38°E 67 lks, PY 20" N 48°E 24 lks
 PY 20" N 38°W 12 lks, PY 20" S 10°W 25 lks

Vaughan in 12/19/01 was at this cor. No mention of BT's.

Wisc. Valley Imp. in 1938 found old post and set 2" iron pipe, 39.964 west of N ¼ 30, 39-8
 & 40.150 north of E ¼
 made BT PN 16" S 82°E 0.546 ch
 PN 14" S 87°W 0.280 ch (now N 82°W)

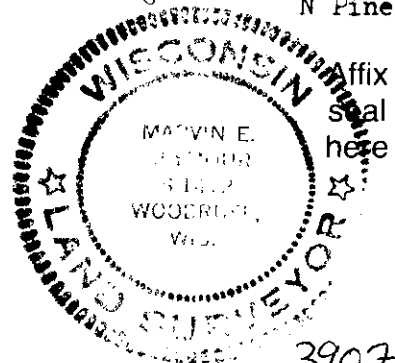
I found 2" i.p. on 11/18/80 and both BT's. Made new BT's PN 16" N 4°W 30.17'
 PN 36" S 32°E 51.00'

(c) (d) (e) Plan view of corner with ties to at least 4 witness monuments. If in disagreement with previously established corner, show the distances between the two corners and also indicate the ties to the disputed corner.



(i) I, Marvin E. Seymour
 (type or print name) certify that the corner location on this record was determined by me or under my direction and control and that this U.S. Public Land Survey Monument Record is correct and complete to the best of my knowledge and belief.

Marvin E. Seymour April 23, 1984
 Signature Date



R-25

U.S. PUBLIC LAND SURVEY MONUMENT RECORD

REGISTER OF DEEDS OFFICE
ONEIDA COUNTY
FILED

JUN 12 2017

Note: This form is intended and designed to fulfill all requirements of the Wisconsin Administrative Code, Chapter A-E 7.08 U.S. Public Land Monument Record (3)(a)(b)(c)(d)(e)(f)(g)(h)(i). An additional sheet may be added if necessary to conform with said requirements.

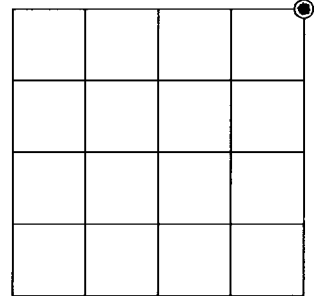
AT _____ O'CLOCK _____ M
KYLE J. FRANSON
REGISTER OF DEEDS

(a) CORNER LOCATION:
Northeast Corner of Section 25
Township 39 North
Range 7 East
Town of Woodruff
County of Oneida

WISCRS - Oneida County
North: 241037.247 USft
East: 228748.132 USft
Latitude: NA
Longitude: NA
Datum: NAD 83(2011)
GNSS Method: RTK - Direct
GNSS Control: WISCORS VRS
Record North: 241037.270 USft
Record East: 228748.101 USft
Record Datum: NAD 83(1991)

(RECORDING AREA)

SECTION 25



(b) HISTORY OF ORIGINAL CORNER ESTABLISHMENT

Original Surveyor:
Date of Survey: Commenced _____
Completed _____
Original B.T.'S _____

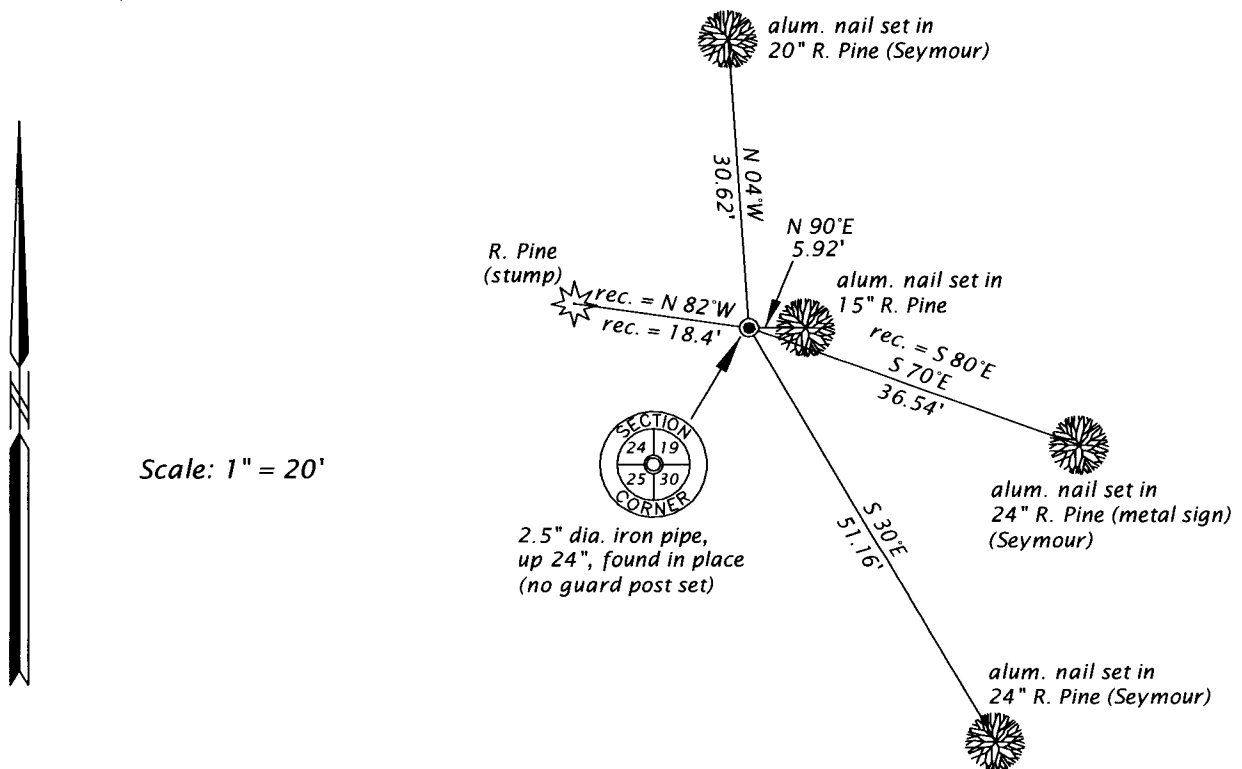
**SEE PREVIOUS U.S.P.L.S. MONUMENT
RECORD DATED APRIL 23, 1984**

(f)(g)(h) DESCRIPTION OF MONUMENT FOUND AT THIS CORNER AND IF IT WAS ACCEPTED, STATE ALL EVIDENCE (MATERIAL, TESTIMONIAL, OCCUPATIONAL, PLATS, RECORD, OTHER MONUMENTS) USED AS A BASIS FOR ESTABLISHING LOCATION. IF NOT ACCEPTED OR IF NOTHING WAS FOUND, STATE EVIDENCE USED AS BASIS FOR ESTABLISHING LOCATION. IF REESTABLISHED THROUGH LOST CORNER PROPORTIONATE METHODS, INDICATE ALL MONUMENTS, DISTANCES AND DIRECTIONS USED TO ESTABLISH. INDICATE TYPE OF MONUMENT AND SIGN POST FOUND OR SET.

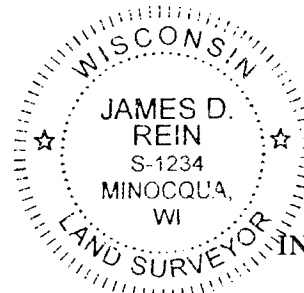
This is a perpetuation of a previous USPLS Monument Record by Marvin E. Seymour, RLS dated April 23rd, 1984, and filed in the office of the Oneida County Register of Deeds. A complete history of the corner can be found on the previous monument record. I accept the previous location as a true and faithful perpetuation or reestablishment of the original corner location and further perpetuate it as follows.

April 13, 2017, I found and accepted the 2.5" dia. iron pipe shown on the previous U.S.P.L.S. Monument Record by Marvin E. Seymour. His northwest N. Pine is now a stump. We tied two additional bearing trees. See below for updated reference ties.

(c)(d)(e) PLAN VIEW OF CORNER WITH TIES TO AT LEAST 4 WITNESS MONUMENTS. IF IN DISAGREEMENT WITH PREVIOUSLY ESTABLISHED CORNER, SHOW THE DISTANCE BETWEEN THE TWO CORNERS AND ALSO INDICATE THE TIES TO THE DISPUTED CORNER.



(i) I, JAMES D. REIN, PROFESSIONAL LAND SURVEYOR NO. S-1234 HEREBY CERTIFY THAT THE CORNER LOCATION ON THIS RECORD WAS DETERMINED BY ME OR UNDER MY DIRECTION AND CONTROL AND THAT THIS U.S. PUBLIC LAND SURVEY MONUMENT RECORD IS CORRECT AND COMPLETE TO THE BEST OF MY KNOWLEDGE AND BELIEF.



[Handwritten Signature]
SIGNATURE

6-04-17
DATE

INDEX NO. R - 25
3907240000