

U.S. PUBLIC LAND SURVEY MONUMENT RECORD

Note: This form is intended and designed to fulfill all requirements of Wisconsin Administrative Code, Chapter A-E 5.02, U.S. Public Land Survey Monument Record (3) (a) (b) (c) (d) (e) (f) (g) (h) (i). An additional sheet may be added if necessary to conform with said requirements.

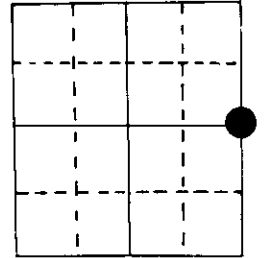
(a) Corner location: Township 39 North

Range 7 East ~~East~~

Town ~~Woodruff~~ of Woodruff

County Oneida

2" iron pipe



E 1/4 Section 24

(b) (f) (g) (h) Description of monument found at this corner and if it was accepted, state all evidence (material, testimonial, occupational, plats, records, other monuments) used as a basis for accepting. If not accepted or if nothing was found, state evidence used as basis for establishing location. If reestablished through lost corner proportionate methods, indicate all monuments, distances and directions used to establish.

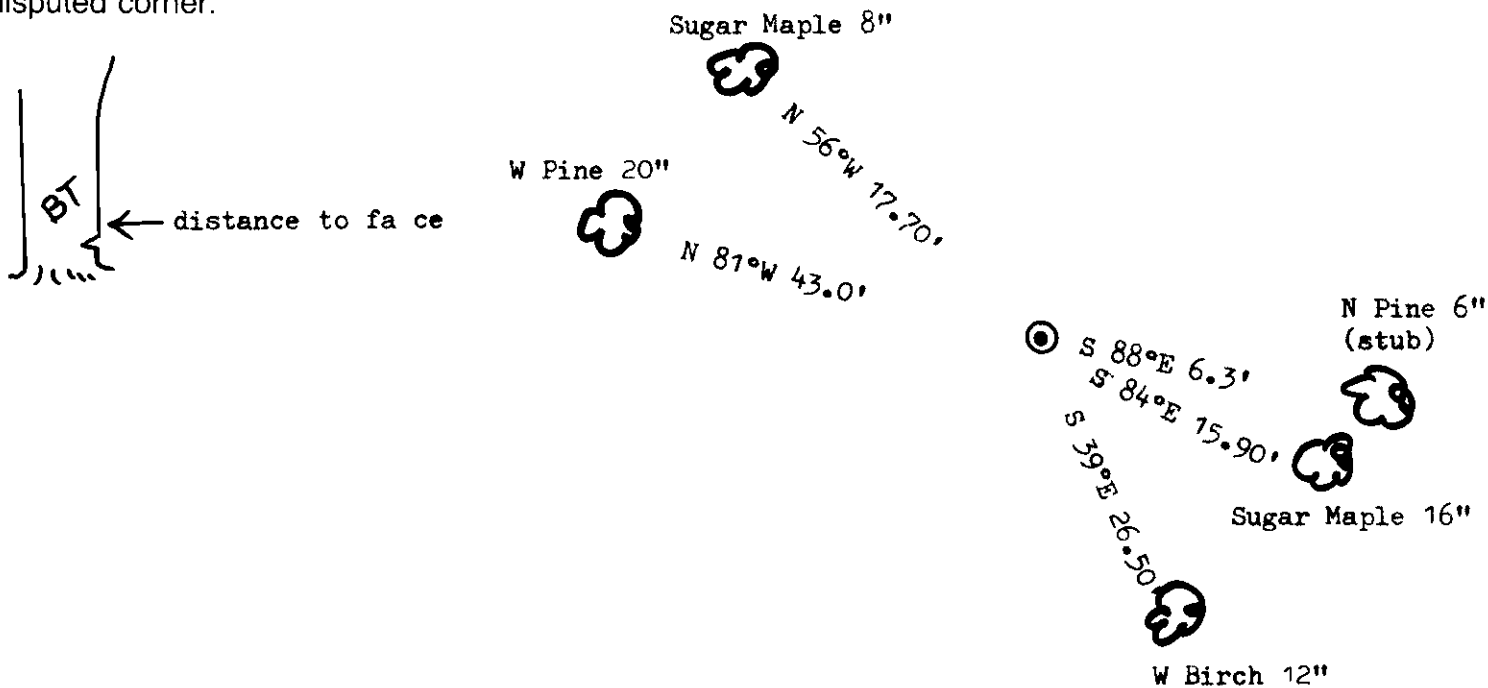
Original Alex Anderson Sept 1860. OBT's Asp 14" S 53°W 22 lks, Asp 10" N 35°W 5 lks

Vaughan in 1900 found 1/4 cor., in 1913 he found it again & made new BT's PY stp 6" N 22°W 36 1/2
PY stp 6" N 23°E 64 1/2

Wisc Valley Imp. in 1938 found post and set 2" i.p. PN 6" S 81°E 0.095 ch
PW 16" N 86°W 0.652 ch

I found on 11/18/80 the 2" i.p. & BT's. Made three more BT's 5/84.

(c) (d) (e) Plan view of corner with ties to at least 4 witness monuments. If in disagreement with previously established corner, show the distances between the two corners and also indicate the ties to the disputed corner.



(i) I, Marvin E. Seymour
(type or print name) certify that the corner location on this record was determined by me or under my direction and control and that this U.S. Public Land Survey Monument Record is correct and complete to the best of my knowledge and belief.

Marvin E. Seymour June 5, 1984
Signature Date



3907242000

P-25

U.S. PUBLIC LAND SURVEY MONUMENT RECORD

Note: This form is intended and designed to fulfill all requirements of the Wisconsin Administrative Code, Chapter A-E 7.08 U.S. Public Land Monument Record (3)(a)(b)(c)(d)(e)(f)(g)(h)(i). An additional sheet may be added if necessary to conform with said requirements.

REGISTER OF DEEDS OFFICE
ONEIDA COUNTY
FILED

JUN 08 2017

(a) CORNER LOCATION:

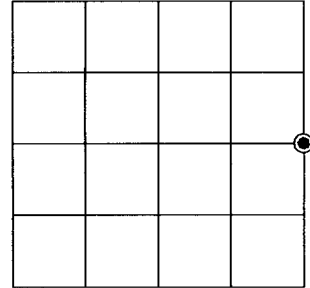
East Quarter Corner of Section 24
Township 39 North
Range 7 East
Town of Woodruff
County of Oneida

North: *** USft
East: *** USft
Datum: NAD
GNSS Method:
GNSS Control:

AT O'CLOCK M
RYLE J. FRANSON
REGISTER OF DEEDS

(RECORDING AREA)

SECTION 24



(b) HISTORY OF ORIGINAL CORNER ESTABLISHMENT

Original Surveyor:
Date of Survey: Commenced
Completed
Original B.T.'S

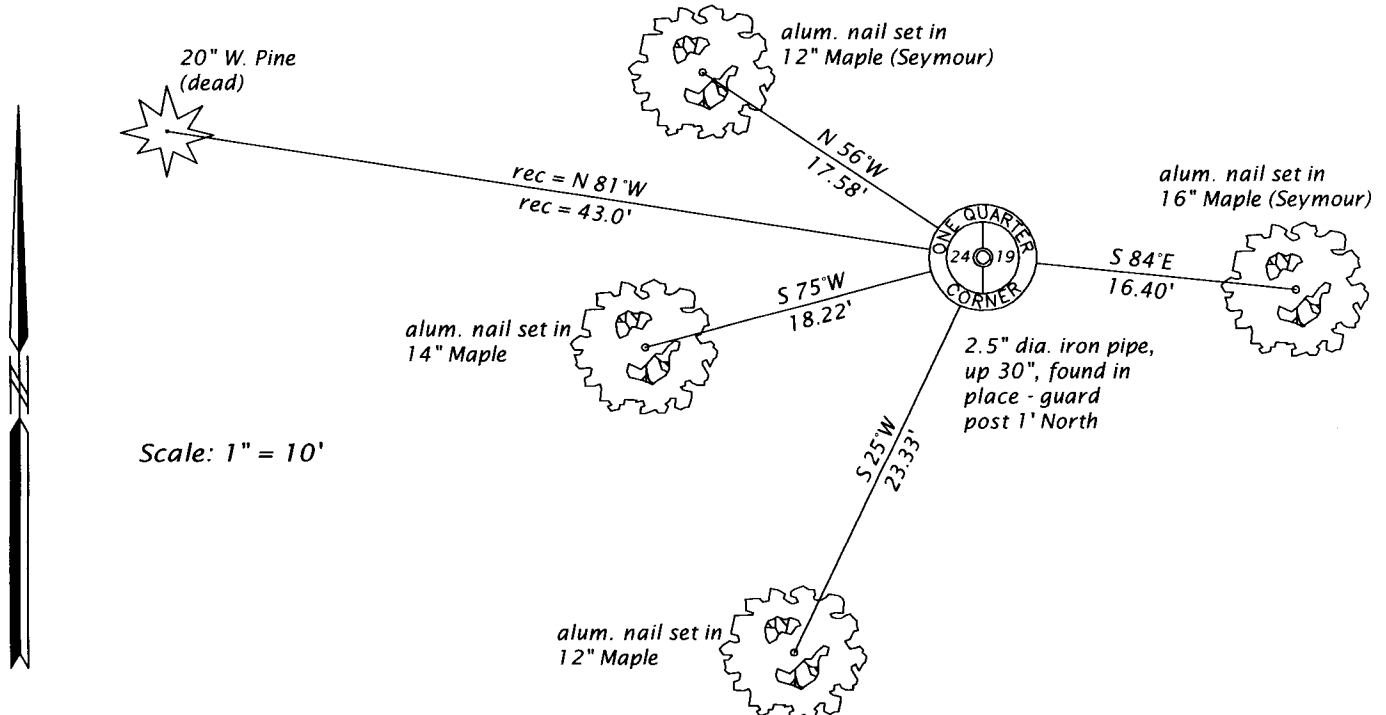
**SEE PREVIOUS U.S.P.L.S. MONUMENT
RECORD DATED JUNE 5, 1984**

(f)(g)(h) DESCRIPTION OF MONUMENT FOUND AT THIS CORNER AND IF IT WAS ACCEPTED, STATE ALL EVIDENCE (MATERIAL, TESTIMONIAL, OCCUPATIONAL, PLATS, RECORD, OTHER MONUMENTS) USED AS A BASIS FOR ESTABLISHING LOCATION. IF NOT ACCEPTED OR IF NOTHING WAS FOUND, STATE EVIDENCE USED AS BASIS FOR ESTABLISHING LOCATION. IF REESTABLISHED THROUGH LOST CORNER PROPORTIONATE METHODS, INDICATE ALL MONUMENTS, DISTANCES AND DIRECTIONS USED TO ESTABLISH. INDICATE TYPE OF MONUMENT AND SIGN POST FOUND OR SET.

This is a perpetuation of a previous USPLS Monument Record by Marvin E. Seymour, RLS dated June 5th, 1984, and filed in the office of the Oneida County Register of Deeds. A complete history of the corner can be found on the previous monument record. I accept the previous location as a true and faithful perpetuation or reestablishment of the original corner location and further perpetuate it as follows.

April 13, 2017, I found and accepted the 2.5" dia. iron pipe shown on the previous U.S.P.L.S. Monument Record by Marvin E. Seymour. Two of the southeast BT's are gone and the northwest W. Pine is now dead. See below for updated reference ties.

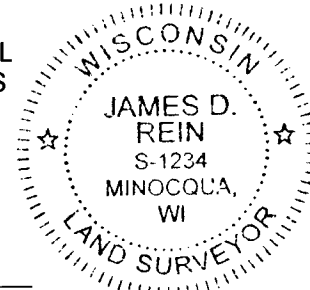
(c)(d)(e) PLAN VIEW OF CORNER WITH TIES TO AT LEAST 4 WITNESS MONUMENTS. IF IN DISAGREEMENT WITH PREVIOUSLY ESTABLISHED CORNER, SHOW THE DISTANCE BETWEEN THE TWO CORNERS AND ALSO INDICATE THE TIES TO THE DISPUTED CORNER.



(i) I, JAMES D. REIN, PROFESSIONAL LAND SURVEYOR NO. S-1234 HEREBY CERTIFY THAT THE CORNER LOCATION ON THIS RECORD WAS DETERMINED BY ME OR UNDER MY DIRECTION AND CONTROL AND THAT THIS U.S. PUBLIC LAND SURVEY MONUMENT RECORD IS CORRECT AND COMPLETE TO THE BEST OF MY KNOWLEDGE AND BELIEF.

[Handwritten Signature]
SIGNATURE

6-04-17
DATE



INDEX NO. P-25
3907242000