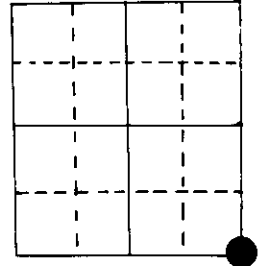


U.S. PUBLIC LAND SURVEY MONUMENT RECORD

Note: This form is intended and designed to fulfill all requirements of Wisconsin Administrative Code, Chapter A-E 5.02, U.S. Public Land Survey Monument Record (3) (a) (b) (c) (d) (e) (f) (g) (h) (i). An additional sheet may be added if necessary to conform with said requirements.

(a) Corner location: Township 39 North
 Range 7 East ~~1000~~
 Town/City ~~Woodruff~~ of Woodruff
 County Oneida



SE cor Section 25

Monument is ~~washed out~~ (on steep bank)

Witness is set

(b) (f) (g) (h) Description of monument found at this corner and if it was accepted, state all evidence (material, testimonial, occupational, plats, records, other monuments) used as a basis for accepting. If not accepted or if nothing was found, state evidence used as basis for establishing location. If reestablished through lost corner proportionate methods, indicate all monuments, distances and directions used to establish.

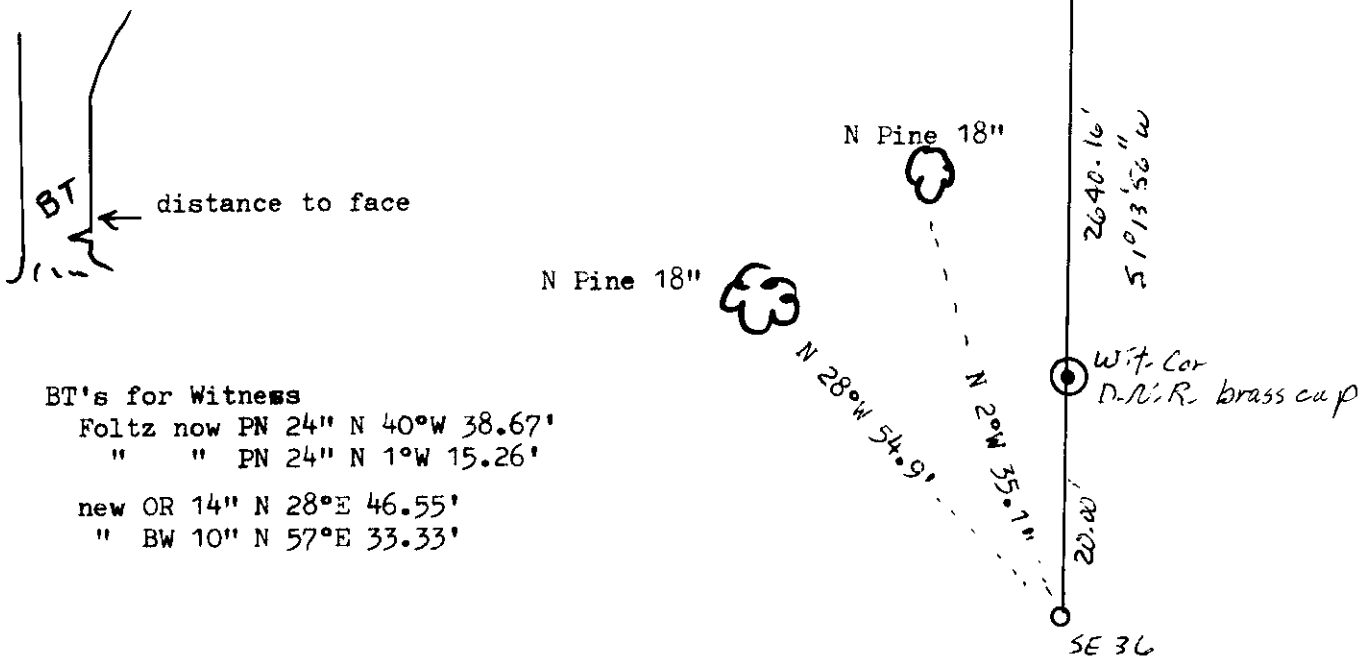
Original Alex Anderson Sept 1860. OBT's none, cor. in river.

Wisc. Valley Imp. had cor., on steep bank.

S Foltz has a map (at Inman- Foltz, Minocqua) that has BT's N 2°W 35.1' PN 18"
 N 28°W 54.9' PN 18"

I used Foltz' BT's to compute the cor. location so I could set a Witness Cor.
 on the line to the E 1/4 25.
 Since the cor. location is on the steep bank I did not remonument it.
 I set a Witness Cor. 20.00' north of true cor. location.,
 Made BT's to the Witness Cor.

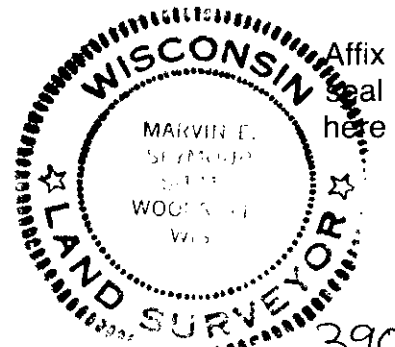
(c) (d) (e) Plan view of corner with ties to at least 4 witness monuments. If in disagreement with previously established corner, show the distances between the two corners and also indicate the ties to the disputed corner.



BT's for Witness
 Foltz now PN 24" N 40°W 38.67'
 " " PN 24" N 1°W 15.26'
 new OR 14" N 28°E 46.55'
 " BW 10" N 57°E 33.33'

(i) I, Marvin E. Seymour
 (type or print name) certify that the corner location on this record was determined by me or under my direction and control and that this U.S. Public Land Survey Monument Record is correct and complete to the best of my knowledge and belief.

Marvin E. Seymour April 30, 1984
 Signature Date



V-25

3907250000