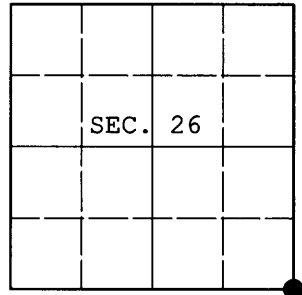


U.S. PUBLIC LAND SURVEY MONUMENT RECORD

Note: This form is intended and designed to fulfill all requirements of Wisconsin Administrative Code, Chapter A-E 7.08 U.S. Public Land Survey Monument Record (3) (a) (b) (c) (d) (e) (f) (g) (h) (i). An additional sheet may be added if necessary to conform with said requirements.

(a) CORNER LOCATION: Plane Coordinates
 Cor. of Secs. 25, 26, 35 & 36 N:
 Township 39 North E:
 Range 7 East of the 4th P.M. Datum:
 Town of Woodruff County of Oneida



(b) HISTORY OF ORIGINAL CORNER ESTABLISHMENT

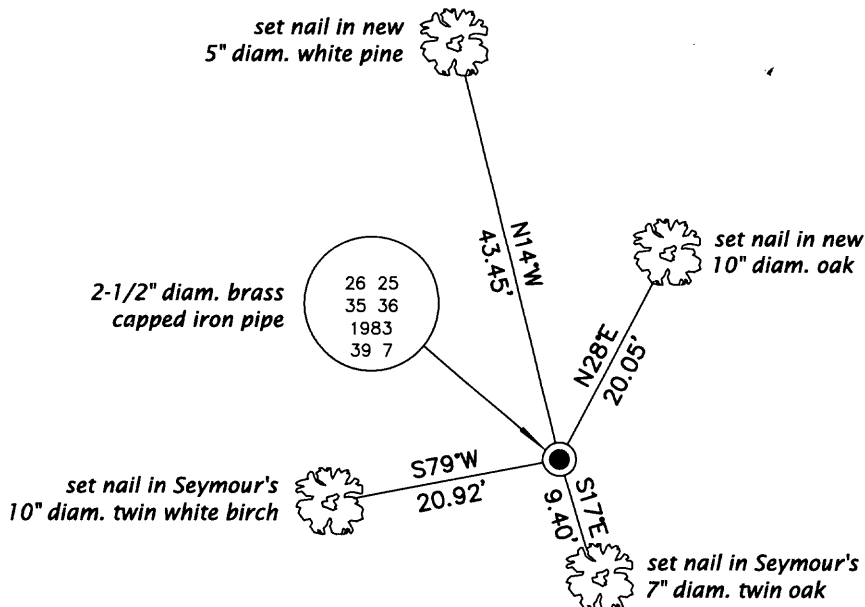
Original Surveyor: Alexander Anderson Original Accessories:
 Date of Survey: Commenced Sep., 1863 white pine 10" N46°W, 19 lks.
 Completed Oct., 1863 aspen 10" S70°E, 22 lks.

(b) (f) (g) (h) Description of monument found at this corner and if it was accepted, state all evidence (material, testimonial, occupational, plats, records, other monuments) used as a basis for accepting. If not accepted or if nothing was found, state evidence used as basis for establishing location. If re-established through lost corner proportionate methods, indicate all monuments, distances and directions used to establish. Indicate type of monument and sign post found or set.

NOTE: This is a perpetuation of a previous USPLS Monument Record by Marvin E. Seymour, RLS dated April 30, 1984 and filed in the office of the Oneida County Register of Deeds. A complete history of the corner can be found on the previous monument record. I accept the previous location as a true and faithful perpetuation or reestablishment of the original corner location and further perpetuate it as follows.

July 11, 2011: I found and accepted Seymour's monument, a 2-1/2" diam. iron pipe with DNR brass cap projecting 12" above the ground surface. Only two of Seymour's bearing trees remain. I found the GLO white pine stub at record bearing and distance. I found or established accessories as shown below and set a white plastic sign post bearing North, 1 ft. dist.

(c) (d) (e) Plan view of corner with ties to at least 4 witness monuments. If in disagreement with previously established corner, show the distances between the two corners and also indicate the ties to the disputed.



REGISTER OF DEEDS OFFICE
 ONEIDA COUNTY, WIS.
FILED
 SEP 19 2011
 At _____ O'Clock _____ M
THOMAS H. LEIGHTON
 REGISTER OF DEEDS



(i) I, Jeffrey W. Austin, Registered Land Surveyor No. S-1885, hereby certify upon honor that the corner location on this record was determined by me or under my direction and control and that this U.S. Public Land Survey Monument Record is correct and complete to the best of my knowledge and belief.

Signature _____ Date SEP - 10, 2011



3907260000 (INDEX NO. V-21)