

# U.S. PUBLIC LAND SURVEY MONUMENT RECORD

Note: This form is intended and designed to fulfill all requirements of Wisconsin Administrative Code, Chapter A-E 5.02, U.S. Public Land Survey Monument Record (3) (a) (b) (c) (d) (e) (f) (g) (h) (i). An additional sheet may be added if necessary to conform with said requirements.

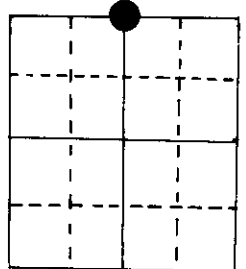
(a) Corner location: Township 39 North  
 Range 7 East ~~West~~

Town ~~Woodruff~~ of Woodruff

County Oneida

" 2" iron pipe with D.N.R. brass cap

N<sup>1</sup>/<sub>4</sub> Section 35

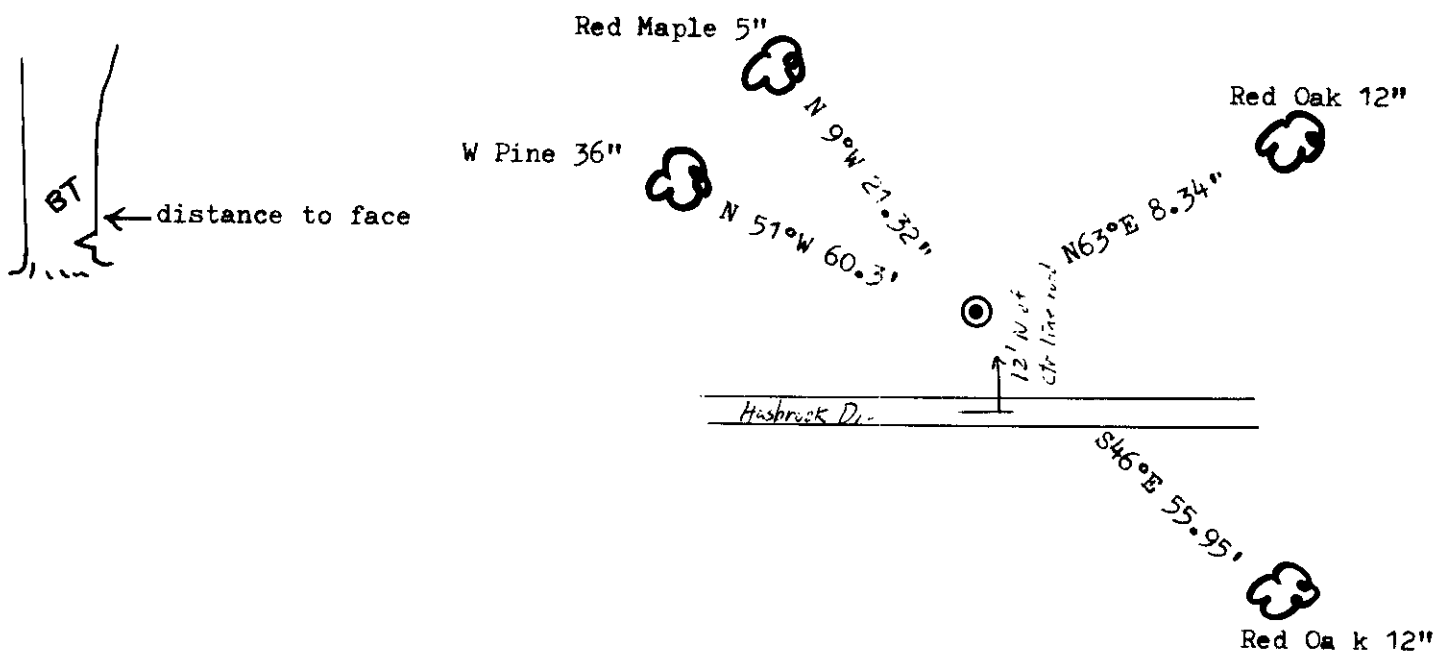


(b) (f) (g) (h) Description of monument found at this corner and if it was accepted, state all evidence (material, testimonial, occupational, plats, records, other monuments) used as a basis for accepting. If not accepted or if nothing was found, state evidence used as basis for establishing location. If reestablished through lost corner proportionate methods, indicate all monuments, distances and directions used to establish.

Original Alex Anderson Sept 1863. OBT's Maple 8" N 14°E 18 lks, Asp 12" S 49°E 4 lks  
 Reinhart, Nelson & Mentz set W.C.D. pipe 1954-55) alongside a 1½" pipe.  
 BT PW 24" N 52°W .92 ch

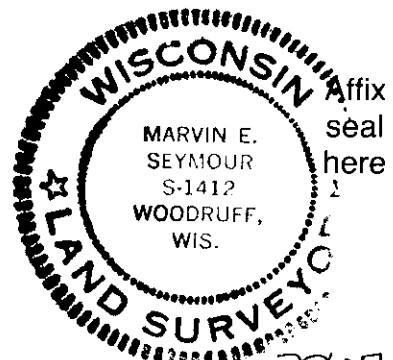
I found on 9/23/83 a 1½" i.p. with W.C.D. pipe alongside, BT PW 36" N 51°W 60.3'  
 The W.C.D. pipe is bent over from plowing.  
 ON 10/10/83 I set a D.N.R. brass cap in place of the 1½" i.p. & made BT's.

(c) (d) (e) Plan view of corner with ties to at least 4 witness monuments. If in disagreement with previously established corner, show the distances between the two corners and also indicate the ties to the disputed corner.



(i) I, Marvin E. Seymour  
 (type or print name) certify that the corner location on this record was determined by me or under my direction and control and that this U.S. Public Land Survey Monument Record is correct and complete to the best of my knowledge and belief.

Marvin E. Seymour April 30, 1984  
 Signature Date



V-19

3907260020

# U.S. PUBLIC LAND SURVEY MONUMENT RECORD

REGISTER OF DEEDS OFFICE  
ONEIDA COUNTY  
FILED

APR 24 2020

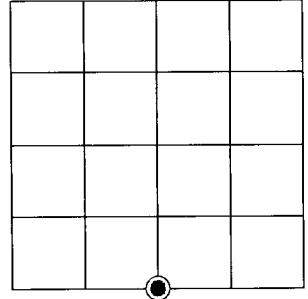
Note: This form is intended and designed to fulfill all requirements of the Wisconsin Administrative Code, Chapter A-E 7.08 U.S. Public Land Monument Record (3)(a)(b)(c)(d)(e)(f)(g)(h)(i). An additional sheet may be added if necessary to conform with said requirements.

KYLE J. FRANSON  
REGISTER OF DEEDS

(a) CORNER LOCATION: WISCORS - Oneida County  
 S 1/4 Corner of Section 26 North: 235763.87 USft  
 Township 39 North East: 220942.81 USft  
 Range 7 East Datum: NAD83(2011)  
 Town of Woodruff GNSS Method: RTN - Direct  
 Oneida County GNSS Control: WISCORS VRS

( RECORDING AREA)

SECTION 26



(b) HISTORY OF ORIGINAL CORNER ESTABLISHMENT

Original Surveyor:  
 Date of Survey: Commenced  
 Completed  
 Original B.T.'S

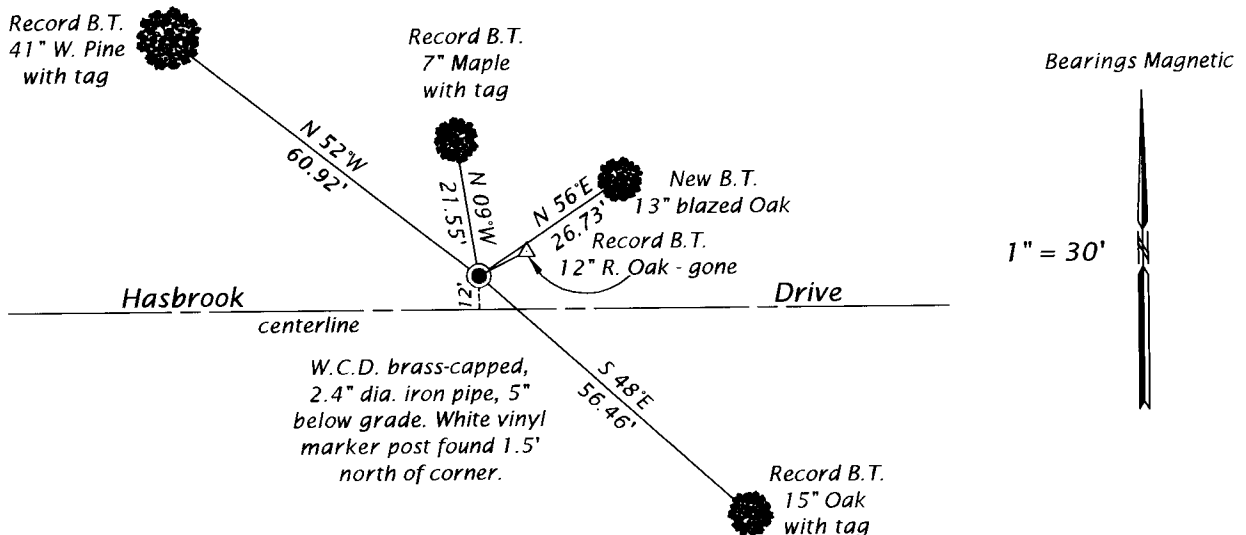
SEE PREVIOUS U.S.P.L.S. MONUMENT  
 RECORD DATED APRIL 30, 1983

(f)(g)(h) DESCRIPTION OF MONUMENT FOUND AT THIS CORNER AND IF IT WAS ACCEPTED, STATE ALL EVIDENCE (MATERIAL, TESTIMONIAL, OCCUPATIONAL, PLATS, RECORD, OTHER MONUMENTS) USED AS A BASIS FOR ESTABLISHING LOCATION. IF NOT ACCEPTED OR IF NOTHING WAS FOUND, STATE EVIDENCE USED AS BASIS FOR ESTABLISHING LOCATION. IF REESTABLISHED THROUGH LOST CORNER PROPORTIONATE METHODS, INDICATE ALL MONUMENTS, DISTANCES AND DIRECTIONS USED TO ESTABLISH. INDICATE TYPE OF MONUMENT AND SIGN POST FOUND OR SET.

*This is a perpetuation of a previous U.S.P.L.S. Monument Record by Marvin Seymour, RLS-1412, dated April 30, 1984, and filed in the office of the Oneida County Register of Deeds. A complete history of the corner can be found on the previous monument record. I accept the previous location as a true and faithful perpetuation or reestablishment of the original corner location and further perpetuate it as follows.*

*December 20, 2019 - I, James D. Rein, P.L.S. No. S-1234, we found and I accepted a D.N.R. brass capped iron pipe shown in the 1984 monument record by Marvin E. Seymour. His northeast red oak bearing tree is now gone, which we replaced with a new oak bearing tree as shown below in plan.*

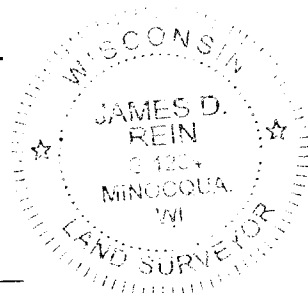
(c)(d)(e) PLAN VIEW OF CORNER WITH TIES TO AT LEAST 4 WITNESS MONUMENTS. IF IN DISAGREEMENT WITH PREVIOUSLY ESTABLISHED CORNER, SHOW THE DISTANCE BETWEEN THE TWO CORNERS AND ALSO INDICATE THE TIES TO THE DISPUTED CORNER.



(i) I, JAMES D. REIN, PROFESSIONAL LAND SURVEYOR NO. S-1234 HEREBY CERTIFY THAT THE CORNER LOCATION ON THIS RECORD WAS DETERMINED BY ME OR UNDER MY DIRECTION AND CONTROL AND THAT THIS U.S. PUBLIC LAND SURVEY MONUMENT RECORD IS CORRECT AND COMPLETE TO THE BEST OF MY KNOWLEDGE AND BELIEF.

*James D. Rein*  
 SIGNATURE

2-19-20  
 DATE



INDEX NO. V-19  
 3907260020