

U.S. PUBLIC LAND SURVEY MONUMENT RECORD

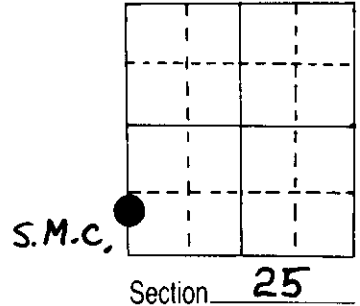
Note: This form is intended and designed to fulfill all requirements of Wisconsin Administrative Code, Chapter A-E 5.02, U.S. Public Land Survey Monument Record (3) (a) (b) (c) (d) (e) (f) (g) (h) (i). An additional sheet may be added if necessary to conform with said requirements.

(a) Corner location: Township 39 North
 Range 7 East ~~10~~

Town ~~Cherry Village~~ of Woodruff

County Oneida

1" iron pipe



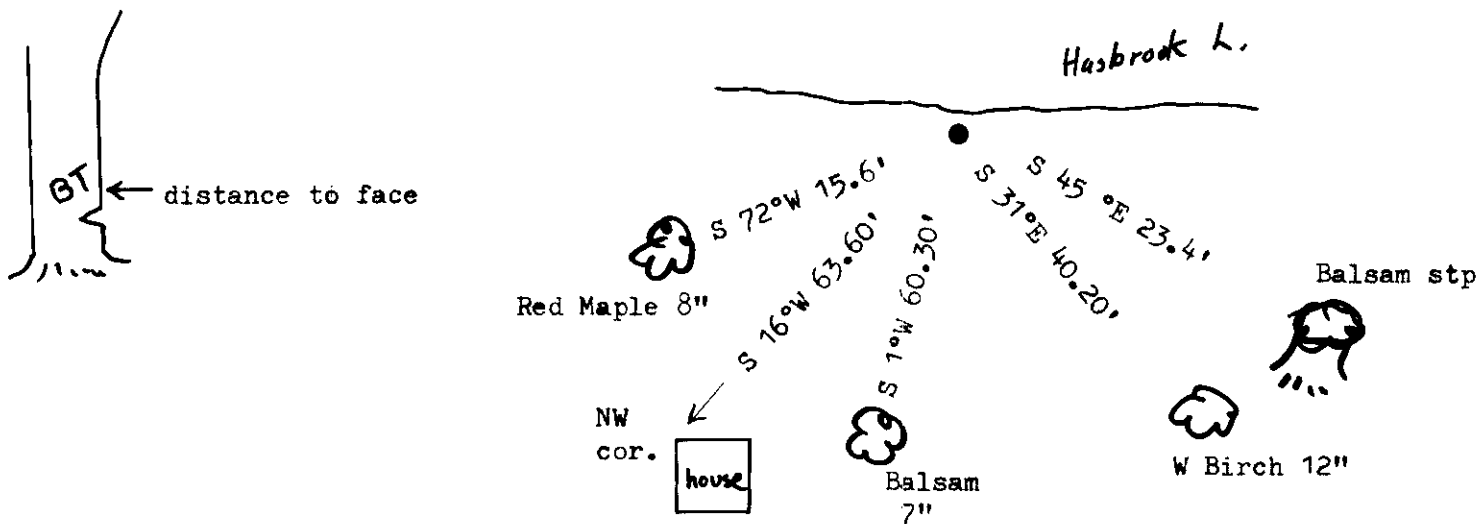
(b) (f) (g) (h) Description of monument found at this corner and if it was accepted, state all evidence (material, testimonial, occupational, plats, records, other monuments) used as a basis for accepting. If not accepted or if nothing was found, state evidence used as basis for establishing location. If reestablished through lost corner proportionate methods, indicate all monuments, distances and directions used to establish.

Original Alex Anderson Sept 1863. OBT's Cherry 5" S 32½°E 19 lks, Cherry 5" S 31 °W 27 lks at 13.50 ch north of SW 25.

Wisconsin in 1 953 shows i.p. & BT's maple S 72°W 15.6', FB S45 °E 23.4'

I found 1" i.p. on 1/4/83 with BT's, FB now a stp. Made two more BT's & house ref. at 970.30' north of SW 25.

(c) (d) (e) Plan view of corner with ties to at least 4 witness monuments. If in disagreement with previously established corner, show the distances between the two corners and also indicate the ties to the disputed corner.



(i) I, Marvin E. Seymour
 (type or print name) certify that the corner location on this record was determined by me or under my direction and control and that this U.S. Public Land Survey Monument Record is correct and complete to the best of my knowledge and belief.

Marvin E. Seymour April 23, 1984
 Signature Date



U-21

3907260700

U.S. PUBLIC LAND SURVEY MONUMENT RECORD

Note: This form is intended and designed to fulfill all requirements of the Wisconsin Administrative Code, Chapter A-E 7.08 U.S. Public Land Monument Record (3)(a)(b)(c)(d)(e)(f)(g)(h)(i). An additional sheet may be added if necessary to conform with said requirements.

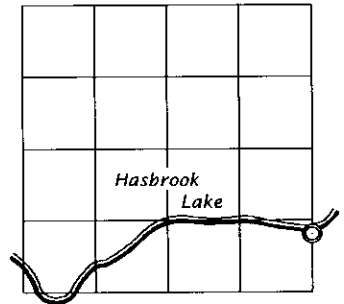
REGISTER OF DEEDS OFFICE
ONEIDA COUNTY
FILED

MAR 28 2017

(a) CORNER LOCATION: WISCRS - Oneida County
 Meander Corner of Section 26 North: 236756.692 US ft
 Township 39 North East: 223549.817 US ft
 Range 7 East Datum: NAD 83(2011)
 Town of Woodruff GNSS Method: RTK - Direct
 County of Oneida GNSS Control: WISCORS VRS

AT O'CLOCK M
 KYLE J. FRANSON
 REGISTER OF DEEDS

SECTION 26



(b) HISTORY OF ORIGINAL CORNER ESTABLISHMENT

Original Surveyor:
 Date of Survey: Commenced
 Completed
 Original B.T.'S

**SEE PREVIOUS USPLS MONUMENT
 RECORD DATED APRIL 23, 1984.**

(f)(g)(h) DESCRIPTION OF MONUMENT FOUND AT THIS CORNER AND IF IT WAS ACCEPTED, STATE ALL EVIDENCE (MATERIAL, TESTIMONIAL, OCCUPATIONAL, PLATS, RECORDS, OTHER MONUMENTS) USED AS A BASIS FOR ESTABLISHING LOCATION. IF NOT ACCEPTED OR IF NOTHING WAS FOUND, STATE EVIDENCE USED AS BASIS FOR ESTABLISHING LOCATION. IF REESTABLISHED THROUGH LOST CORNER PROPORTIONATE METHODS, INDICATE ALL MONUMENTS, DISTANCES AND DIRECTIONS USED TO ESTABLISH. INDICATE TYPE OF MONUMENT AND SIGN POST FOUND OR SET.

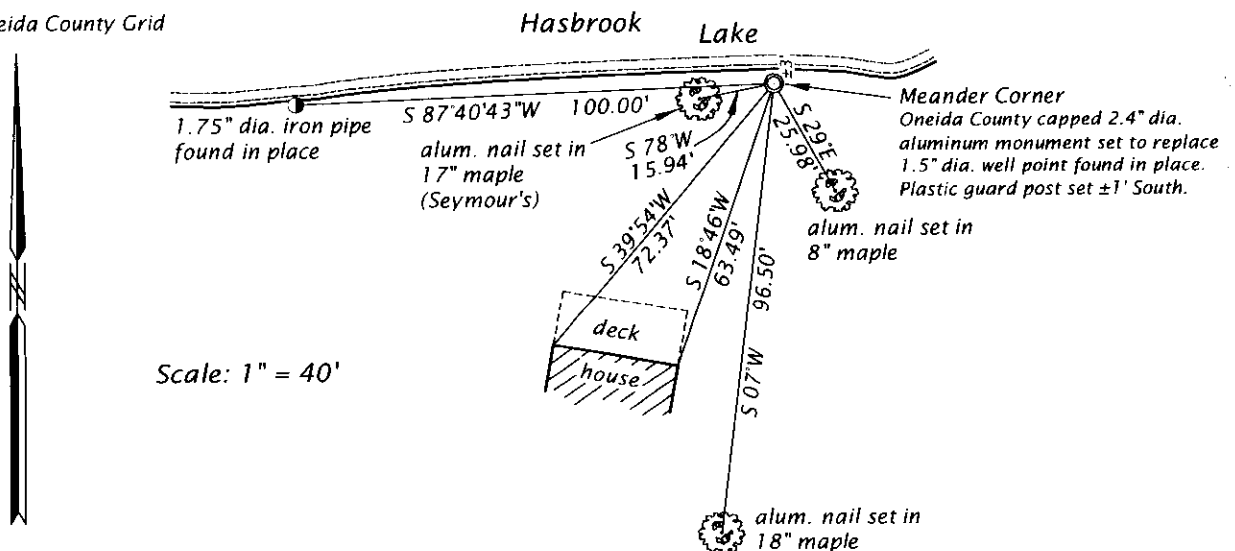
This is a perpetuation of a previous USPLS Monument Record by Marvin E. Seymour, RLS dated April 23, 1984 and filed in the office of the Oneida County Register of Deeds. The history of the corner can be found on the previous monument record. I accept the previous location as a true and faithful perpetuation or reestablishment of the original corner location and further perpetuate it as follows.

March 10, 2017, James D. Rein, PLS, found and accepted a 1.5" dia. well point in place at the meander corner position. We also recovered Seymour's southwesterly maple BT. Seymour erroneously shows his tie to the NW building corner, we found his distance checks to the NE building corner. We replaced the well point with an Oneida County capped 2.4" dia. aluminum monument - see below for updated witness ties.

The coordinate value shown has been verified by at least one of the following methods: 1) comparison to a previously GPS determined published value; 2) the value is the average of two or more GPS observations at a markedly different time; 3) one or more distances were measured back to the GPS observed corner from temporary GPS observed offset locations.

(c)(d)(e) PLAN VIEW OF CORNER WITH TIES TO AT LEAST 4 WITNESS MONUMENTS. IF IN DISAGREEMENT WITH PREVIOUSLY ESTABLISHED CORNER, SHOW THE DISTANCE BETWEEN THE TWO CORNERS AND ALSO INDICATE THE TIES TO THE DISPUTED CORNER.

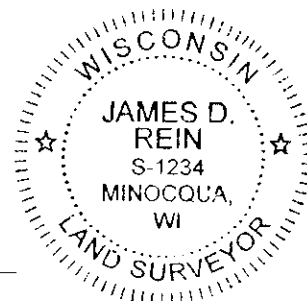
Bearings Oneida County Grid



(i) I, JAMES D. REIN, PROFESSIONAL LAND SURVEYOR NO. S-1234 HEREBY CERTIFY THAT THE CORNER LOCATION ON THIS RECORD WAS DETERMINED BY ME OR UNDER MY DIRECTION AND CONTROL AND THAT THIS U.S. PUBLIC LAND SURVEY MONUMENT RECORD IS CORRECT AND COMPLETE TO THE BEST OF MY KNOWLEDGE AND BELIEF.

[Signature]
 SIGNATURE

3-23-17
 DATE



3907260700

INDEX NO. U-V-21