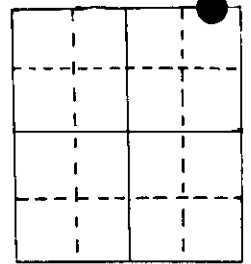


# U.S. PUBLIC LAND SURVEY MONUMENT RECORD

Note: This form is intended and designed to fulfill all requirements of Wisconsin Administrative Code, Chapter A-E 5.02, U.S. Public Land Survey Monument Record (3) (a) (b) (c) (d) (e) (f) (g) (h) (i). An additional sheet may be added if necessary to conform with said requirements.

(a) Corner location: Township 39 North  
 Range 7 East ~~1~~

W.M.C.



Town ~~Woodruff~~ of Woodruff  
 County Oneida

Section 34

1 1/2" iron pipe

(b) (f) (g) (h) Description of monument found at this corner and if it was accepted, state all evidence (material, testimonial, occupational, plats, records, other monuments) used as a basis for accepting. If not accepted or if nothing was found, state evidence used as basis for establishing location. If reestablished through lost corner proportionate methods, indicate all monuments, distances and directions used to establish.

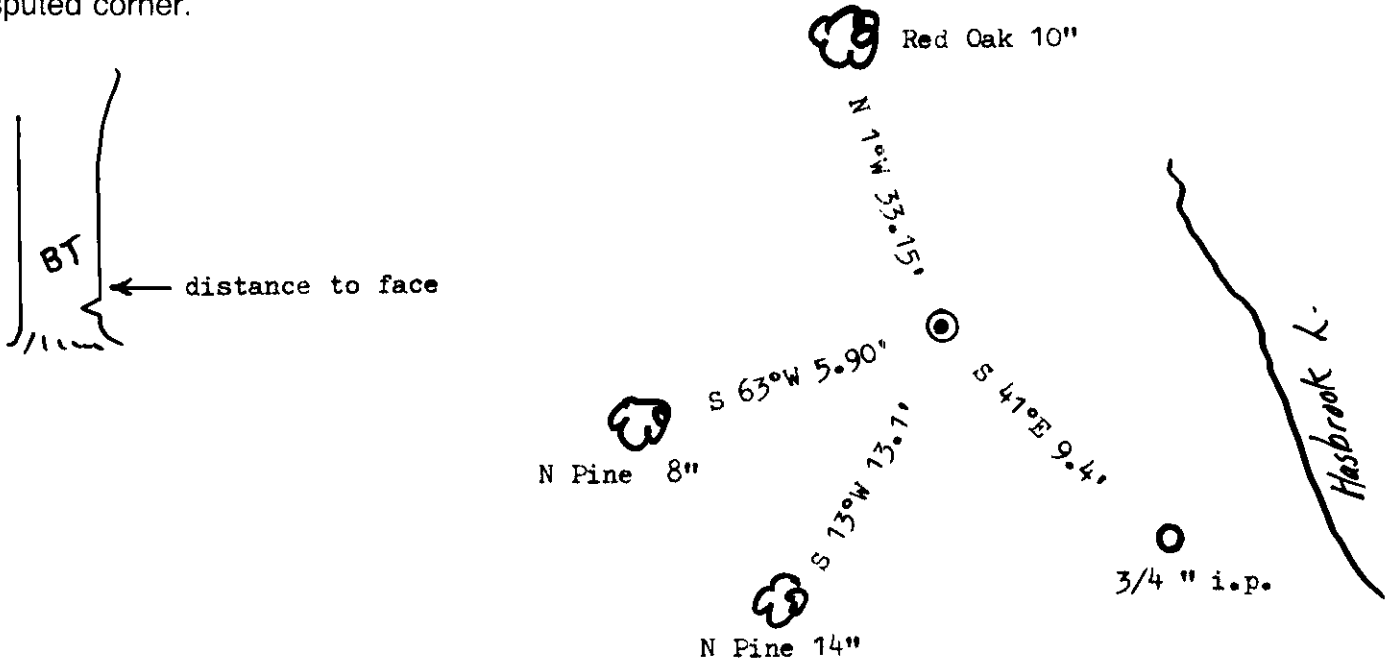
Original Alex Anderson Sept 1863. OBT's BW 7" N 31°W 41 lks, BW 6" S 23 °W 25 lks at 75.41 ch west of NW 34.

IN 1955-54 Reinhart, Nelson & Mentz show pipe here. BT's PW stp 30" S 27°W .159 ch  
 BW 10" N 50°W .32 ch

Northwoods Surveyors made lots in 1960's. BT PN 8" S 11°W 13.1'

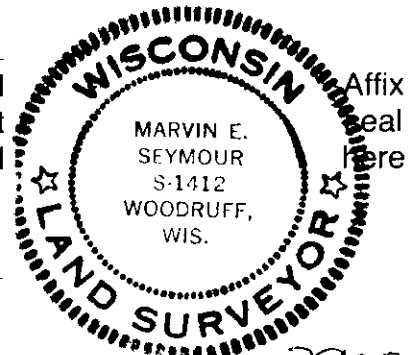
I found 1 1/2" i.p and BW 14" N 50°W ,(stp I could not find). Found 3/4" i.p. SE of here with lot stake.

(c) (d) (e) Plan view of corner with ties to at least 4 witness monuments. If in disagreement with previously established corner, show the distances between the two corners and also indicate the ties to the disputed corner.



(i) I, Marvin E. Seymour  
 (type or print name) certify that the corner location on this record was determined by me or under my direction and control and that this U.S. Public Land Survey Monument Record is correct and complete to the best of my knowledge and belief.

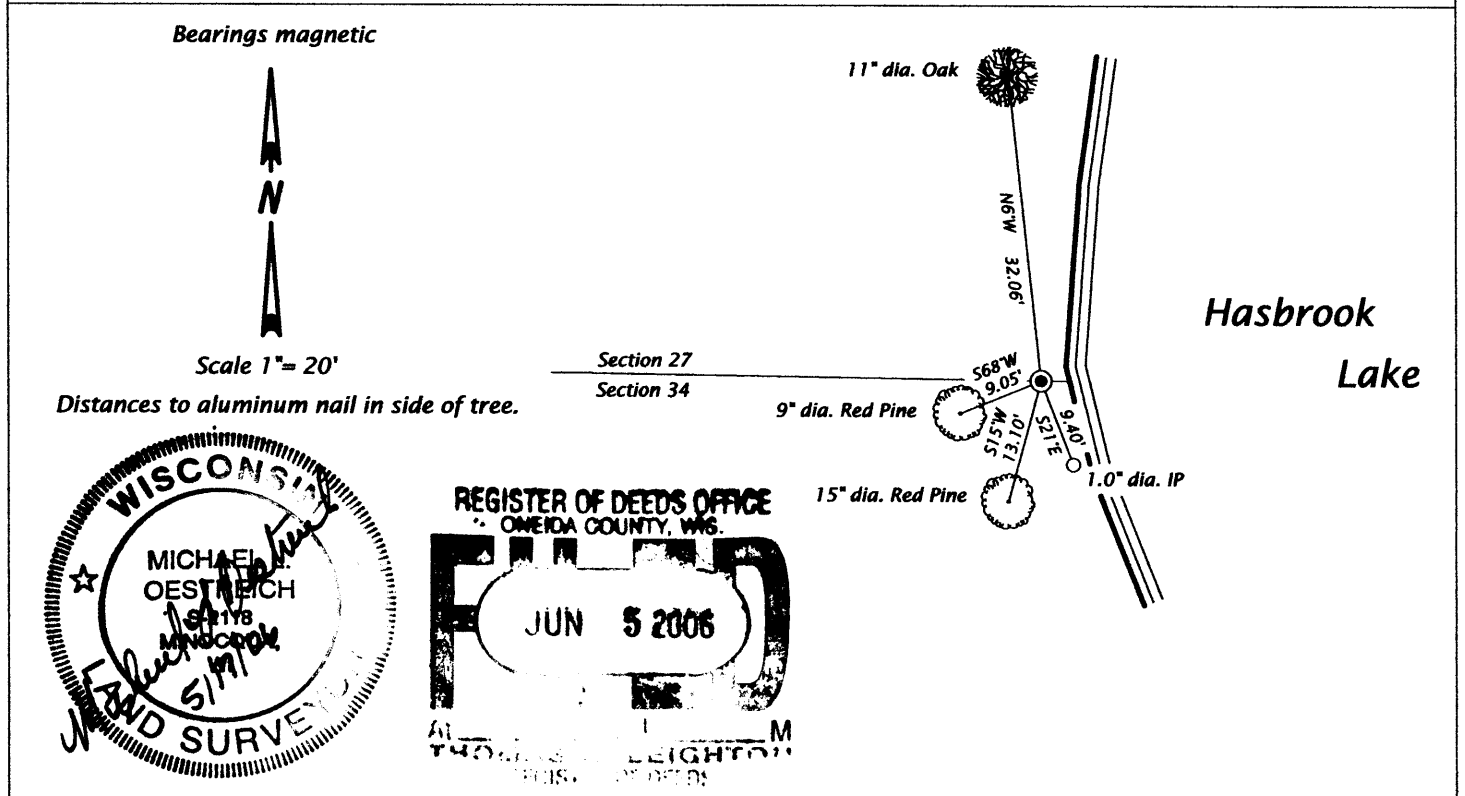
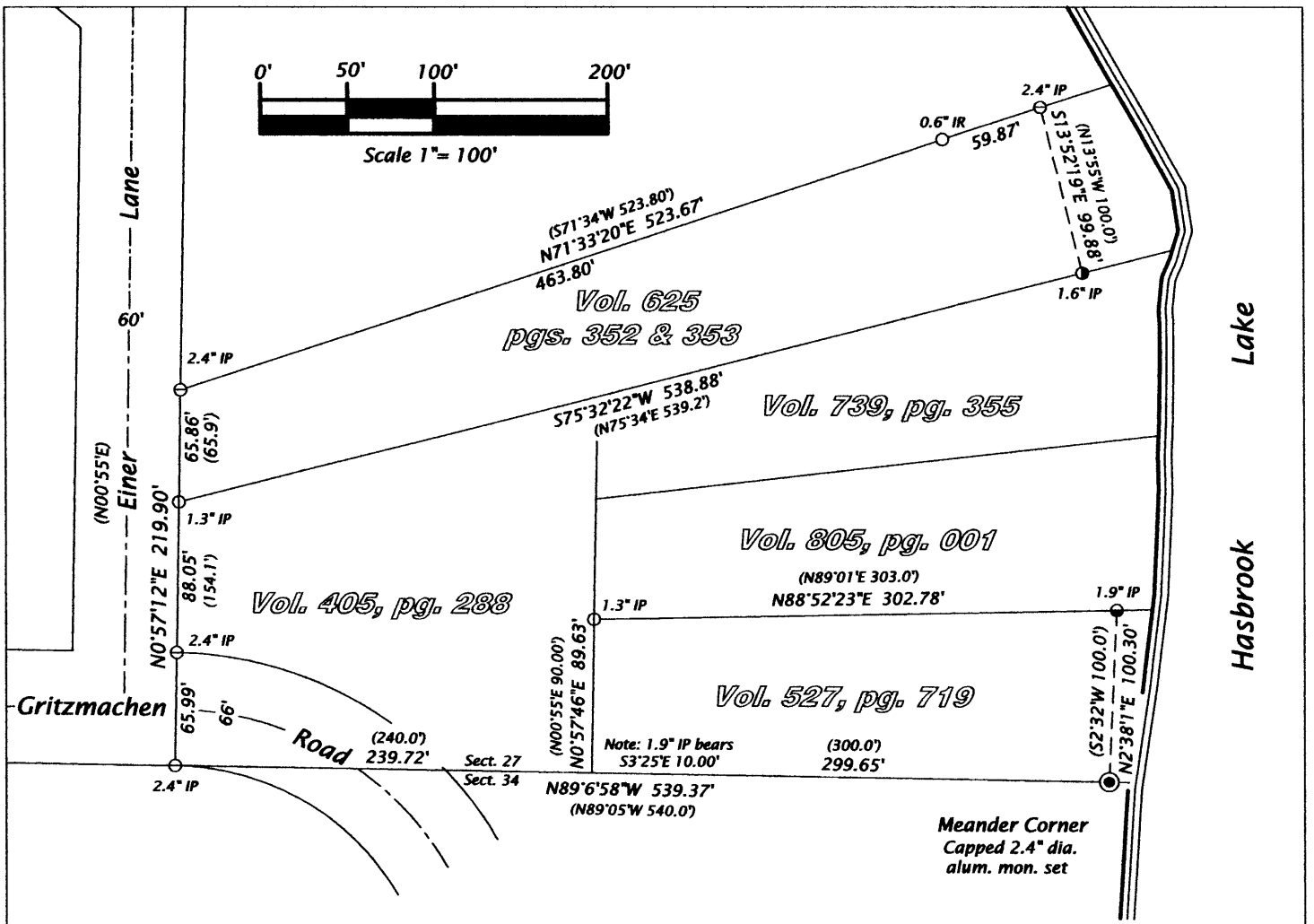
Marvin E. Seymour June 5, 1984  
 Signature Date



V-17

3907270004





Michael L. Oestreich: May 2006, I was unable to recover the 1 1/2" dia. iron pipe used by Marvin Seymour in June of 1984. However I was able to recover all four witness accessories: (record dimensions) Red Oak 10", N1W 33.15'; N. Pine 8", S63W 5.90'; N Pine 14", S13W 13.1' and 3/4" ip S41E 9.4'. The above mentioned witness ties do not intersect at one location, and I believe some of the ties are in error. I needed to tie into this corner in order to complete a nearby survey project. I tied to additional monumentation in order to confirm the location of the Meander Corner. I re-established the Meander Corner using Seymour's distance to the 14" N. Pine and his distance to the 3/4" iron pipe. This position agrees with the recorded Plat of Palmo Shores and survey data on adjoining parcels. The relationship of the re-established Meander Corner to the existing monumentation is shown in the plan view above, and also the new ties to existing bearing trees and 3/4" iron pipe.

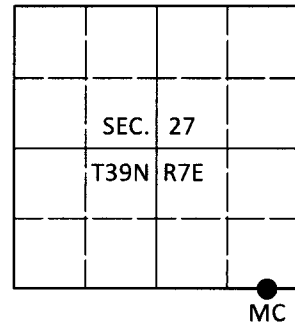
V 16-17

**U.S. PUBLIC LAND SURVEY MONUMENT RECORD**

Note: This form is intended and designed to fulfill all requirements of Wisconsin Administrative Code, Chapter A-E 7.08 U.S. Public Land Survey Monument Record (3)(a-i).

(a) CORNER LOCATION  
 Meander Cor. of Secs. 27 & 34  
 Township 39 North  
 Range 7 East of the 4th P.M.  
 Town of Woodruff  
 County of Oneida

WISCRS - Oneida County  
 N: 235,690.71 USft  
 E: 217,945.10 USft  
 Datum: NAD 83(2011)  
 GNSS Method: RTN - Direct  
 GNSS Control: WISCORS VRS



(b) HISTORY OF ORIGINAL CORNER ESTABLISHMENT

Original Surveyor: \_\_\_\_\_ Original Accessories: \_\_\_\_\_  
 Date of Survey Commenced: \_\_\_\_\_ See previous USPLS Monument Record  
 Completed: \_\_\_\_\_

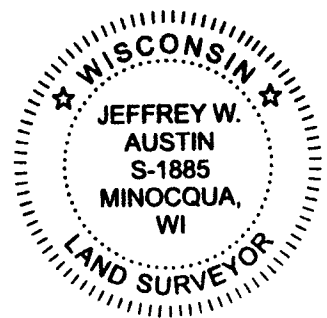
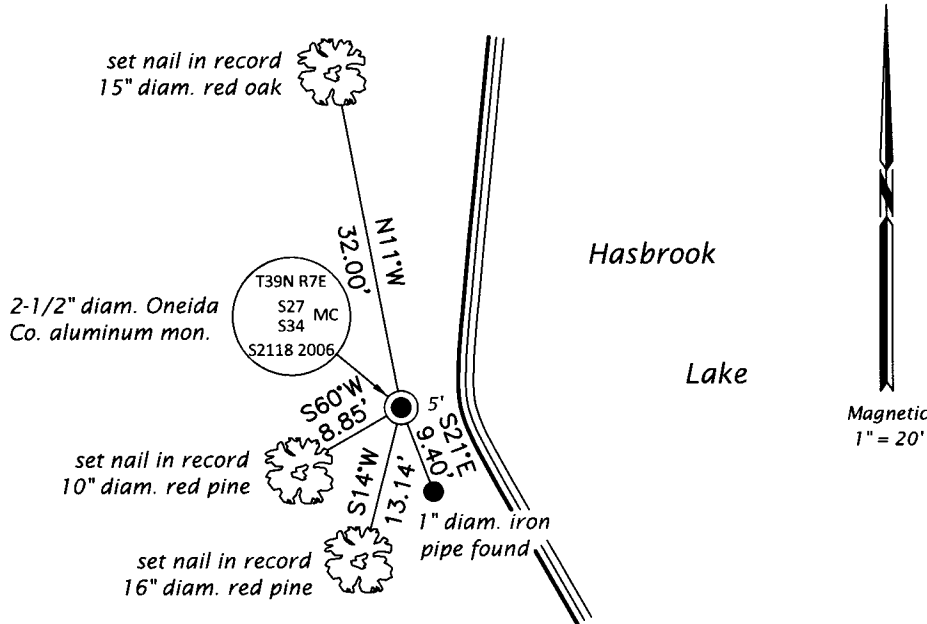
(b)(f)(g)(h) Description of monument found at this corner and if it was accepted, state all evidence (material, testimonial, occupational, plats, records, other monuments) used as a basis for accepting. If not accepted or if nothing was found, state evidence used as basis for establishing location. If re-established through lost corner proportionate methods, indicate all monuments, distances and directions used to establish. Indicate type of monument and sign post found or set.

*This is a perpetuation of a previous USPLS Monument Record by Michael L. Oestreich, RLS dated May 17, 2006 and filed in the office of the Oneida County Register of Deeds. A complete history of the corner can be found on the previous monument record. I accept the previous location as a true and faithful perpetuation or reestablishment of the original corner location and further perpetuate it as follows.*

*Jan. 16, 2019: I found and accepted the record monument, a 2-1/2" diam. aluminum pipe with a 3-1/4" diam. Oneida Co. aluminum cap flush with the ground surface. I found or established accessories as shown below. I was unable to set a sign post due to frost.*

*The coordinate value shown has been verified by at least one of the following methods: 1) comparison to a previously GPS determined published value; 2) the value is the average of two or more GPS observations at a markedly different time; 3) one or more distances were measured back to the GPS observed corner from temporary GPS observed offset locations.*

(c)(d)(e) Plan view of corner with ties to at least 4 witness monuments. If in disagreement with previously established corner, show the distances between the two corners and also indicate the ties to the disputed.



REGISTER OF DEEDS OFFICE  
 ONEIDA COUNTY  
 FILED

FEB 19 2019

KYLE J. FRANSON  
 REGISTER OF DEEDS

(i) I, Jeffrey W. Austin, Professional Land Surveyor No. S-1885, hereby certify that the corner location on this record was determined by me or under my direction and control and that this U.S. Public Land Survey Monument Record is correct and complete to the best of my knowledge and belief.

Signature

29 JAN 2019  
 Date