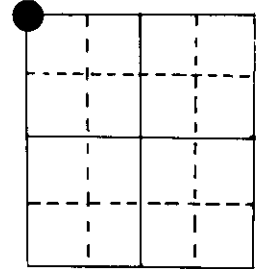


U.S. PUBLIC LAND SURVEY MONUMENT RECORD

Note: This form is intended and designed to fulfill all requirements of Wisconsin Administrative Code, Chapter A-E 5.02, U.S. Public Land Survey Monument Record (3) (a) (b) (c) (d) (e) (f) (g) (h) (i). An additional sheet may be added if necessary to conform with said requirements.

(a) Corner location: Township 39 North
 Range 7 East ~~West~~
 Town/ ~~Oneida~~ of Woodruff
 County Oneida



NW cor Section 33

2" D.N.R. brass cap (inside 4" soil pipe)

(b) (f) (g) (h) Description of monument found at this corner and if it was accepted, state all evidence (material, testimonial, occupational, plats, records, other monuments) used as a basis for accepting. If not accepted or if nothing was found, state evidence used as basis for establishing location. If reestablished through lost corner proportionate methods, indicate all monuments, distances and directions used to establish.

Original Alex Anderson Sept 1863. OBT's PY 20" S 87°E 20 lks, PW 10" S 60°W 25 lks

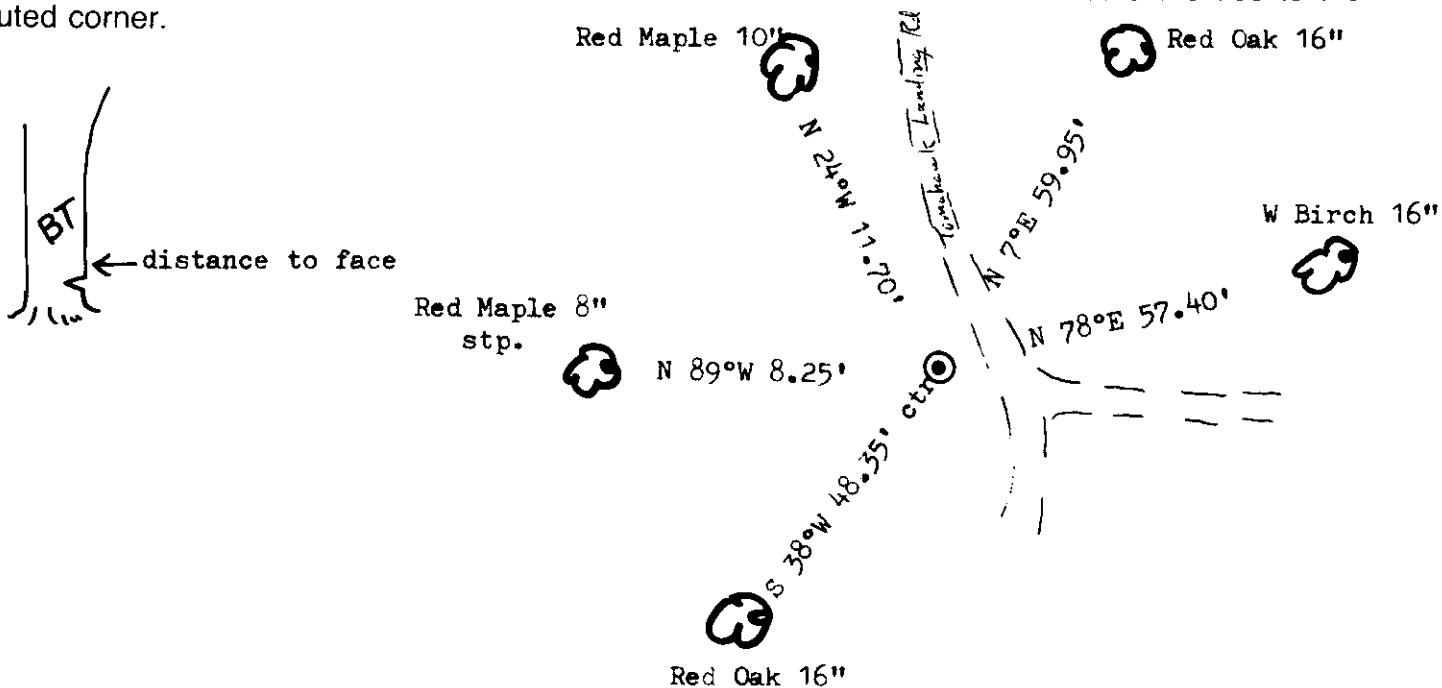
Dorr in 4/30/1900 was at this cor.

Vaughan in 12/24/15 found stps of orig. trees OK. Set iron monument for post.

Vissers in 1 979 found soil pipe & D.N.R. pipe lying alongside. Soil pipe location fit to distances from other cor. (doubled over thru NW 1/8 from N 1/4.
 Made BT's B W 16" N 78°E 57.40', MR 8" N 89°W 8.25'
 OR 16" S 38°W 48.35(to ctr) MH 6" N 78°W 25.55'

I found D.N.R. pipe and BT's. MR N W is stp,
 Made new BT's MR 10! N 24°W 11.70', OR 16" N 7°E 59.95' (2/10/84)

(c) (d) (e) Plan view of corner with ties to at least 4 witness monuments. If in disagreement with previously established corner, show the distances between the two corners and also indicate the ties to the disputed corner.



(i) I, Marvin E. Seymour
 (type or print name) certify that the corner location on this record was determined by me or under my direction and control and that this U.S. Public Land Survey Monument Record is correct and complete to the best of my knowledge and belief.

Marvin E. Seymour April 26, 1984
 Signature Date



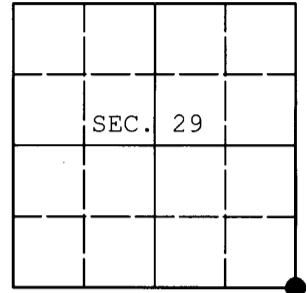
V-9

3907290000

U.S. PUBLIC LAND SURVEY MONUMENT RECORD

Note: This form is intended and designed to fulfill all requirements of Wisconsin Administrative Code, Chapter A-E 7.08 U.S. Public Land Survey Monument Record (3) (a) (b) (c) (d) (e) (f) (g) (h) (i). An additional sheet may be added if necessary to conform with said requirements.

(a) CORNER LOCATION: WISCRS (Oneida County)
Cor. of Secs. 28, 29, 32 & 33 N: 235,530.13 USft
Township 39 North E: 207,651.83 USft
Range 7 East of the 4th P.M. Datum: NAD 1983(2011)
Town of Woodruff County of Oneida



(b) HISTORY OF ORIGINAL CORNER ESTABLISHMENT

Original Surveyor: Original Accessories:
Date of Survey: Commenced:
Completed:

(b)(f)(g)(h) Description of monument found at this corner and if it was accepted, state all evidence (material, testimonial, occupational, plats, records, other monuments) used as a basis for accepting. If not accepted or if nothing was found, state evidence used as basis for establishing location. If re-established through lost corner proportionate methods, indicate all monuments, distances and directions used to establish. Indicate type of monument and sign post found or set.

NOTE: This is a perpetuation of a previous USPLS Monument Record by Marvin E. Seymour, RLS dated April 26, 1984 and filed in the office of the Oneida County Register of Deeds. A complete history of the corner can be found on the previous monument record. I accept the previous location as a true and faithful perpetuation or reestablishment of the original corner location and further perpetuate it as follows.

June 22, 2014: I found and accepted a 2.5" diam. Oneida County aluminum monument (S-1234). This monument was evidently set by Wilderness Surveying since Seymour's record. Seymour's accessories were found in substantial agreement with his previous record and were not remeasured as the sole purpose of this work is to report the coordinates of the corner point.

The coordinates shown were derived from offset RTN GPS observations referenced to the WISCRS network.

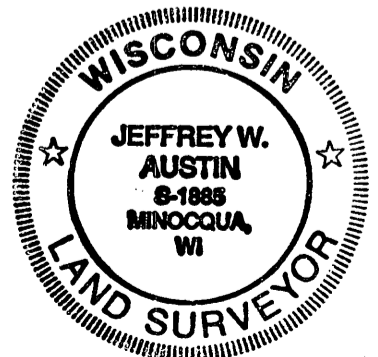
(c)(d)(e) Plan view of corner with ties to at least 4 witness monuments. If in disagreement with previously established corner, show the distances between the two corners and also indicate the ties to the disputed.

REGISTER OF DEEDS OFFICE
ONEIDA COUNTY
FILED

JUL 03 2014

AT O'CLOCK M
KYLE J. FRANSON
REGISTER OF DEEDS

(i) I, Jeffrey W. Austin, Registered Land Surveyor No. S-1885, hereby certify that the corner location on this record was determined by me or under my direction and control and that this U.S. Public Land Survey Monument Record is correct and complete to the best of my knowledge and belief.



Signature

JUNE 28, 2014
Date

U.S. PUBLIC LAND SURVEY MONUMENT RECORD

REGISTER OF DEEDS OFFICE
ONEIDA COUNTY
FILED

APR 24 2020

Note: This form is intended and designed to fulfill all requirements of the Wisconsin Administrative Code, Chapter A-E 7.08 U.S. Public Land Monument Record (3)(a)(b)(c)(d)(e)(f)(g)(h)(i). An additional sheet may be added if necessary to conform with said requirements.

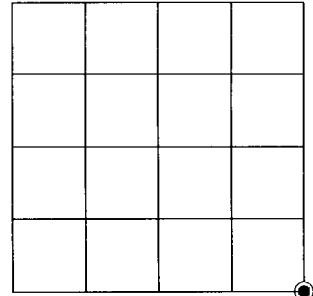
KYLE J. FRANSON
REGISTER OF DEEDS

(a) CORNER LOCATION:
Southeast Corner of Section 29
Township 39 North
Range 7 East
Town of Woodruff
County of Oneida

WISCORS - Oneida County
North: 235,530.154 USft
East: 207,651.861 USft
Datum: NAD 83 (2011)
GNSS Method: RTK - Direct
GNSS Control: WISCORS VRS
Record North: 235,530.13 USft
Record East: 207,651.83 USft
Record Datum: NAD 83 (2011)

(RECORDING AREA)

SECTION 29



(b) HISTORY OF ORIGINAL CORNER ESTABLISHMENT

Original Surveyor:
Date of Survey: Commenced *SEE PREVIOUS U.S.P.L.S. MONUMENT*
Completed *Records dated April 26, 1984 & June 28, 2014*
Original B.T.'S

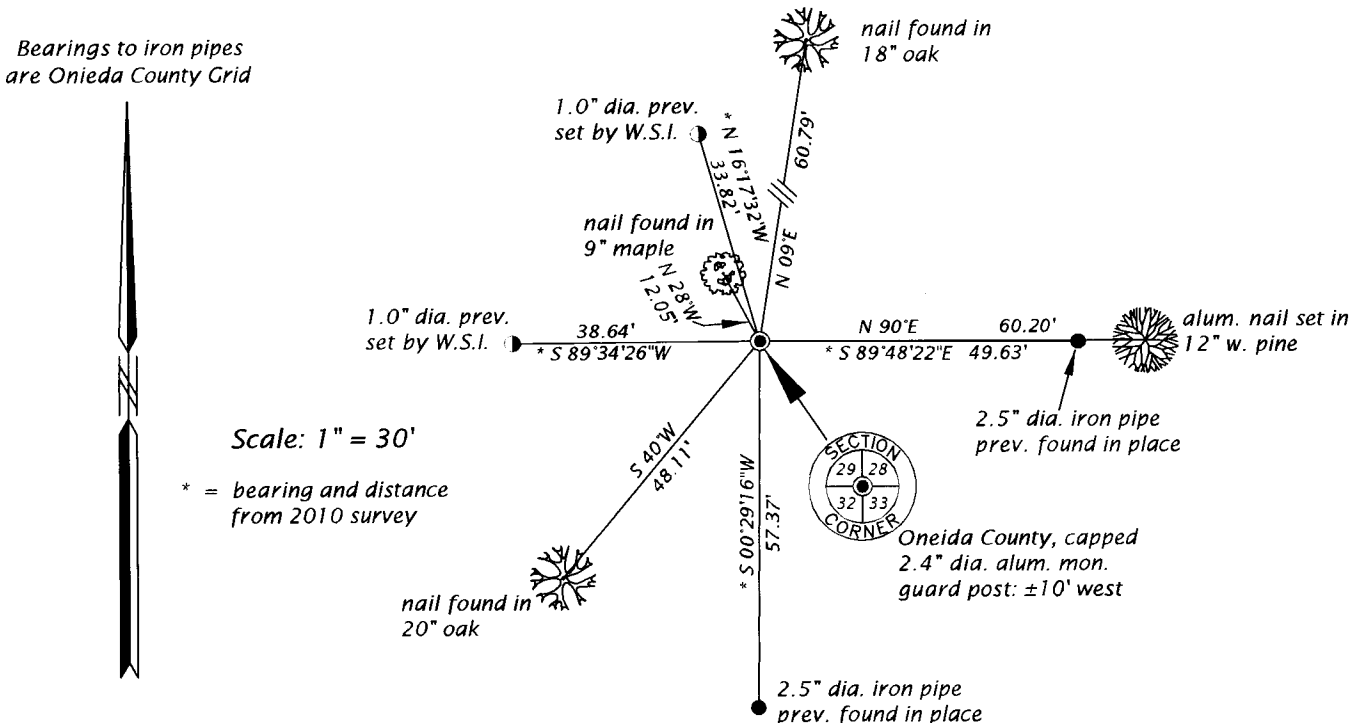
(f)(g)(h) DESCRIPTION OF MONUMENT FOUND AT THIS CORNER AND IF IT WAS ACCEPTED, STATE ALL EVIDENCE (MATERIAL, TESTIMONIAL, OCCUPATIONAL, PLATS, RECORD, OTHER MONUMENTS) USED AS A BASIS FOR ESTABLISHING LOCATION. IF NOT ACCEPTED OR IF NOTHING WAS FOUND, STATE EVIDENCE USED AS BASIS FOR ESTABLISHING LOCATION. IF REESTABLISHED THROUGH LOST CORNER PROPORTIONATE METHODS, INDICATE ALL MONUMENTS, DISTANCES AND DIRECTIONS USED TO ESTABLISH. INDICATE TYPE OF MONUMENT AND SIGN POST FOUND OR SET.

This is a perpetuation of a previous U.S.P.L.S. Monument Record by Marvin E. Seymour, RLS, dated April 26, 1984, and by Jeffrey W. Austin, RLS, dated June 28, 2014, and filed in the office of the Oneida County Register of Deeds. A complete history of the corner can be found on the previous monument records. I accept the previous location as a true and faithful perpetuation or reestablishment of the original corner location and further perpetuate it as follows.

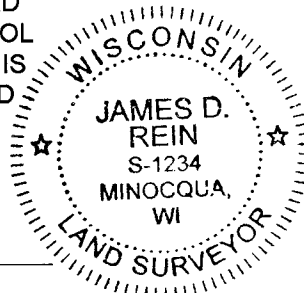
July 26, 2010 - James D. Rein, R.L.S. No. S-1234, WSI, Map No. 10-106, filed as B7341 in O.C. survey office, describes set Oneida County aluminum monument. The corner was remonumented using our prior survey ties shown on our Map 79-34, which is filed as B7341 in the O.C.S. office. It should be noted on that map an iron pipe is shown set west, 38.26 feet, when in fact the field notes show 38.64 feet, which distance was verified by resurvey.

February 5, 2020 - I, James D. Rein, P.L.S. No. S-1234, found and accepted the capped, aluminum monument we set in 2010. Two of Seymour's bearing trees are now gone - see below for our updated reference ties, including those made during the July, 2010 survey.

(c)(d)(e) PLAN VIEW OF CORNER WITH TIES TO AT LEAST 4 WITNESS MONUMENTS. IF IN DISAGREEMENT WITH PREVIOUSLY ESTABLISHED CORNER, SHOW THE DISTANCE BETWEEN THE TWO CORNERS AND ALSO INDICATE THE TIES TO THE DISPUTED CORNER.



(i) I, JAMES D. REIN, PROFESSIONAL LAND SURVEYOR NO. S-1234 HEREBY CERTIFY THAT THE CORNER LOCATION ON THIS RECORD WAS DETERMINED BY ME OR UNDER MY DIRECTION AND CONTROL AND THAT THIS U.S. PUBLIC LAND SURVEY MONUMENT RECORD IS CORRECT AND COMPLETE TO THE BEST OF MY KNOWLEDGE AND BELIEF.



James D. Rein
SIGNATURE
2/14/20
DATE

INDEX NO. V-9
3907290000