

At _____ to Book _____ M
THOMAS H. LEIGHTON
REGISTER OF DEEDS
Recorders Data

This form is intended to fulfill the requirements of Chapter A-E7.08 (3)(a) thru (i) U.S. Public Land Survey Monument Location Record, Wisconsin Administrative Code. Use the reverse side of form for continuation.

U.S. PUBLIC LAND SURVEY MONUMENT LOCATION RECORD

USPLS CORNER: **NORTH MC** SECTION: **33** TOWNSHIP: **39** NORTH RANGE: **7** EAST
 NAME OF WATERWAY FOR M.C. CORNER: **LAKE TOMAHAWK** SECTION LINE: **WEST**
~~(CITY)(VILLAGE)(TOWN)~~ OF: **WOODRUFF** COUNTY OF: **ONEIDA**

Description of monument found or placed and all other evidence used as the basis for monument location; including monuments and measurements required if the corner location was reestablished by lost corner proportionate methods. Also indicate name of the original surveyor, original survey date and the corner monument, bearing trees, witness or other reference monuments established, including measured bearing and distance ties, from available survey records.

Found and accepted an older 2" dia. galvanized iron pipe with WCD stamped brass cap 23" up; although it is tipped South about 4" from plumb, it is very stable for new ties measured to cap center. The corner falls on a steep slope down to existing lakeshore bearing N50°W about 18 feet.

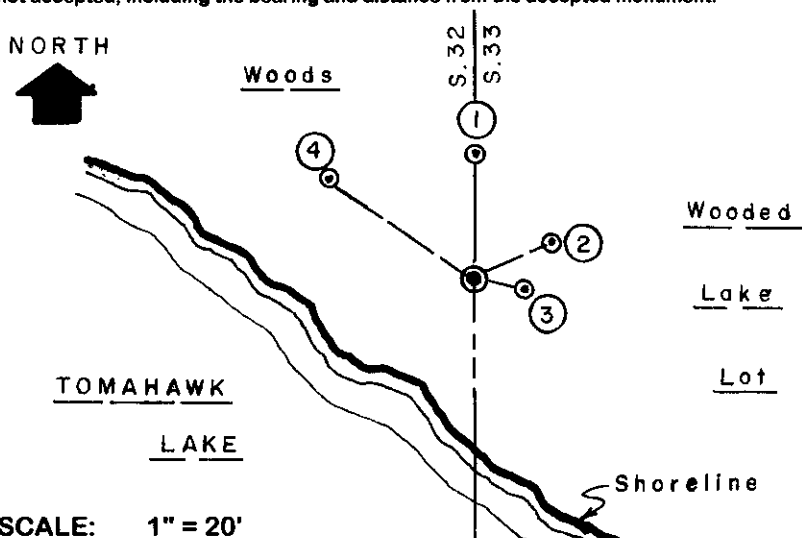
In September/October 1863, Alexander Anderson/GLO set a wood post as the original corner and noted OBTs: a 10" Py N19°W 44 links and a 10" Py N43°E 43 links; all now obliterated.

In August 1964, H.E. Berndt/WCD Forester noted this WCD brass capped iron pipe monument was located at the original GLO survey position per sketch map filed in survey records at the Wisconsin DNR Trout Lake Forestry Office in Boulder Junction, Wisconsin.

In October 1980, Marvin Seymour/RLS 1412 found this WCD brass capped iron pipe monument at original GLO MC survey location per Wisconsin DNR corner location notes filed in Oneida County survey records, and he marked new BTs: a 7" Fir N55°W 19.10' and a 9" Pn N09°W 12.71', both found OK and used for new ties below.

This recovery completed June 9, 2003 and witnessed by adjacent lake lot owners NE of the corner at Fire No. 7397 Forest Trail.

Plan view map of monument location with bearing and distance ties to a minimum of four(4) described witness or reference monuments of concrete, natural stone, iron, live bearing trees or equivalent material. If applicable, also show a minimum of two(2) bearing and distance ties to any other monument found and not accepted; including the bearing and distance from the accepted monument.



WITNESS MONUMENT TIES:

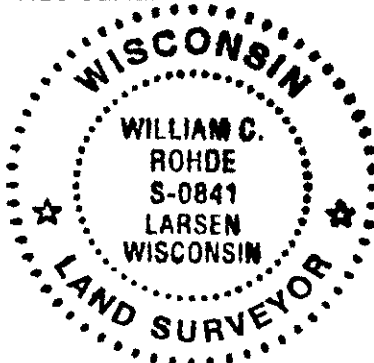
- ① Old 14" Pr BT with upper & lower blaze fissures plain, North 12.38'; I nailed a standard BT sign to upper face.
- ② New 10" Pr BT N66°E 8.82'.
- ③ New 8" Pr BT S78°E 5.24'.
- ④ Old 10" Fir BT with upper & lower blazes shut but scars plain, N56°W 18.61'.

I set a standard white poly 'T' marker post 7" South of corner monument.

SCALE: 1" = 20'

Unless otherwise indicated, all bearing tree ties are to a .25" dia. by 2.5" long PK nail with a 1.25" dia. steel washer driven into unblazed right face and a .25" dia. by 2.5" long PK nail with a 2" dia. steel washer stamped BT is also driven into unblazed face of bearing tree at DBH; the basis for measured bearings is by compass to nearest degree and all tie distances are measured horizontal by steel tape corrected to nearest 1/100th feet at standard temperature of 68° F.

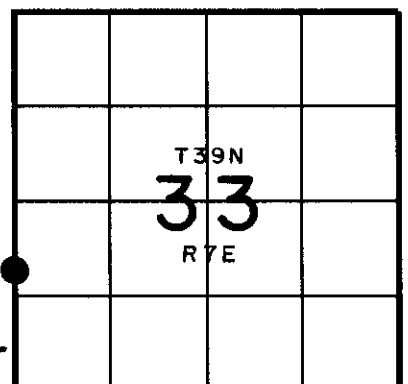
RLS SEAL:



LAND SURVEYOR CERTIFICATE:

I, William C. Rohde, hereby certify that I am duly licensed as a Professional Land Surveyor in the State of Wisconsin; that this USPLS monument location was determined by me and/or under my direct supervision and control; and that this U.S. Public Land Survey Monument Location Record is true and correct to the best of my knowledge and belief.

Signed *William C. Rohde*
William C. Rohde RLS 841



SECTION LOCATION MAP
INDEX NO. *X/14-9*