

U.S. PUBLIC LAND SURVEY MONUMENT RECORD

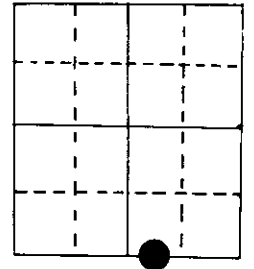
Note: This form is intended and designed to fulfill all requirements of Wisconsin Administrative Code, Chapter A-E 5.02, U.S. Public Land Survey Monument Record (3) (a) (b) (c) (d) (e) (f) (g) (h) (i). An additional sheet may be added if necessary to conform with said requirements.

(a) Corner location: Township 39 North

Range 7 East ~~10~~

Town ~~Woodruff~~ of Woodruff

County Oneida



W.M.C.

Section 36

2" iron pipe with W.C.D. brass cap

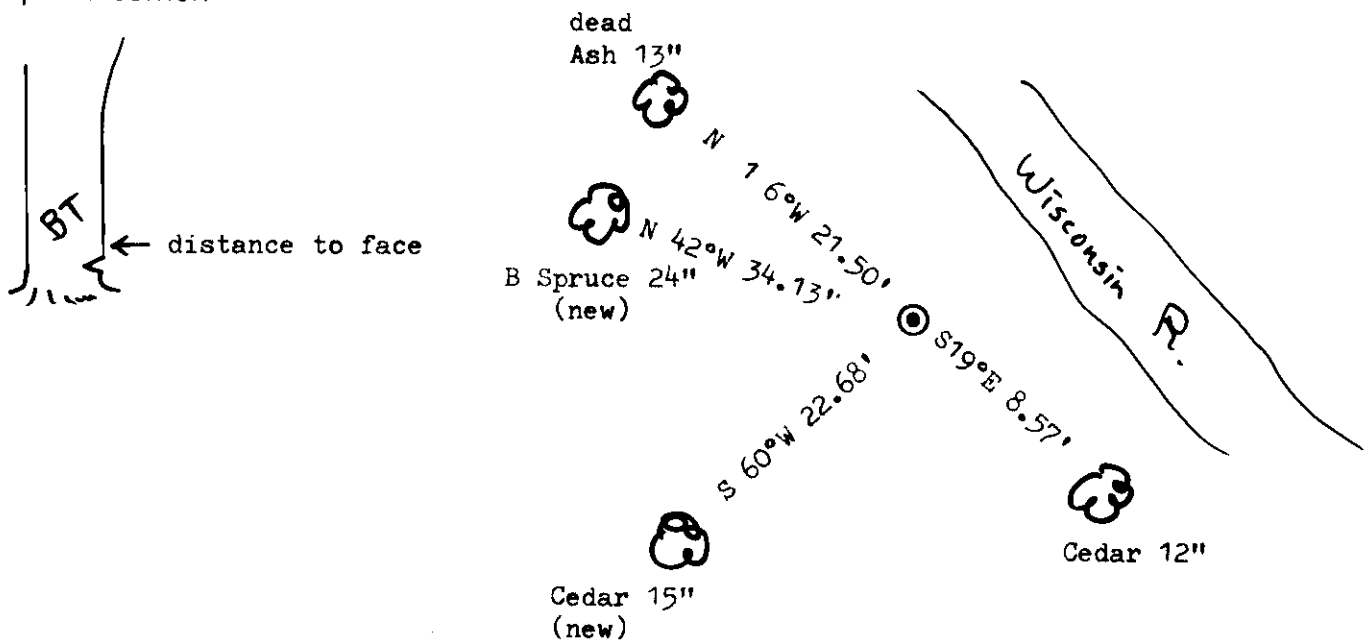
(b) (f) (g) (h) Description of monument found at this corner and if it was accepted, state all evidence (material, testimonial, occupational, plats, records, other monuments) used as a basis for accepting. If not accepted or if nothing was found, state evidence used as basis for establishing location. If reestablished through lost corner proportionate methods, indicate all monuments, distances and directions used to establish.

Original Alex Anderson Sept 1860. OBT's Maple 9" S 19°W 8 lks, B Ash 6" N 40°W 42 lks at 20.95 ch west of SE 36

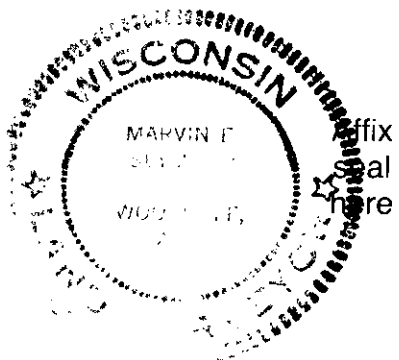
Berndt, 1958, set brass cap at 21.170 ch west of SE 36. BT's AB 13" N 26°W 0.320 ch
CW 10" S 25°E 0.130 ch

I found brass cap on 11/10/80 & BT's OK.

(c) (d) (e) Plan view of corner with ties to at least 4 witness monuments. If in disagreement with previously established corner, show the distances between the two corners and also indicate the ties to the disputed corner.



(i) I, Marvin E. Seymour
(type or print name) certify that the corner location on this record was determined by me or under my direction and control and that this U.S. Public Land Survey Monument Record is correct and complete to the best of my knowledge and belief.



Marvin E. Seymour April 30, 1984
Signature Date

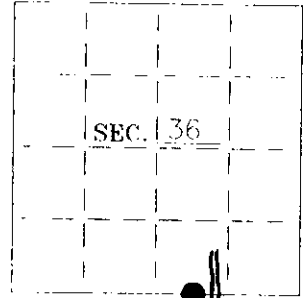
3907360015

7-23 MC

U.S. PUBLIC LAND SURVEY MONUMENT RECORD

Note: This form is intended and designed to fulfill all requirements of Wisconsin Administrative Code—Chapter A E 7.08 U. S. Public Land Survey Monument Record (3)(a)(b)(c)(d)(e)(f)(g)(h)(i). An additional sheet may be added if necessary to conform with said requirements.

(a) CORNER LOCATION: State Plane Coordinates
 Meridian, corner of Sec. 1 & 36 X _____
 Township 39 North Y _____
 Range 07 East Datum Base _____
 Town/City Woodruff County of Oneida



(b) HISTORY OF ORIGINAL CORNER ESTABLISHMENT:
 Original Surveyor: Alexander Anderson
 Date of Survey: Commenced September, 1860
 Completed September, 1860

Original B.T.'S

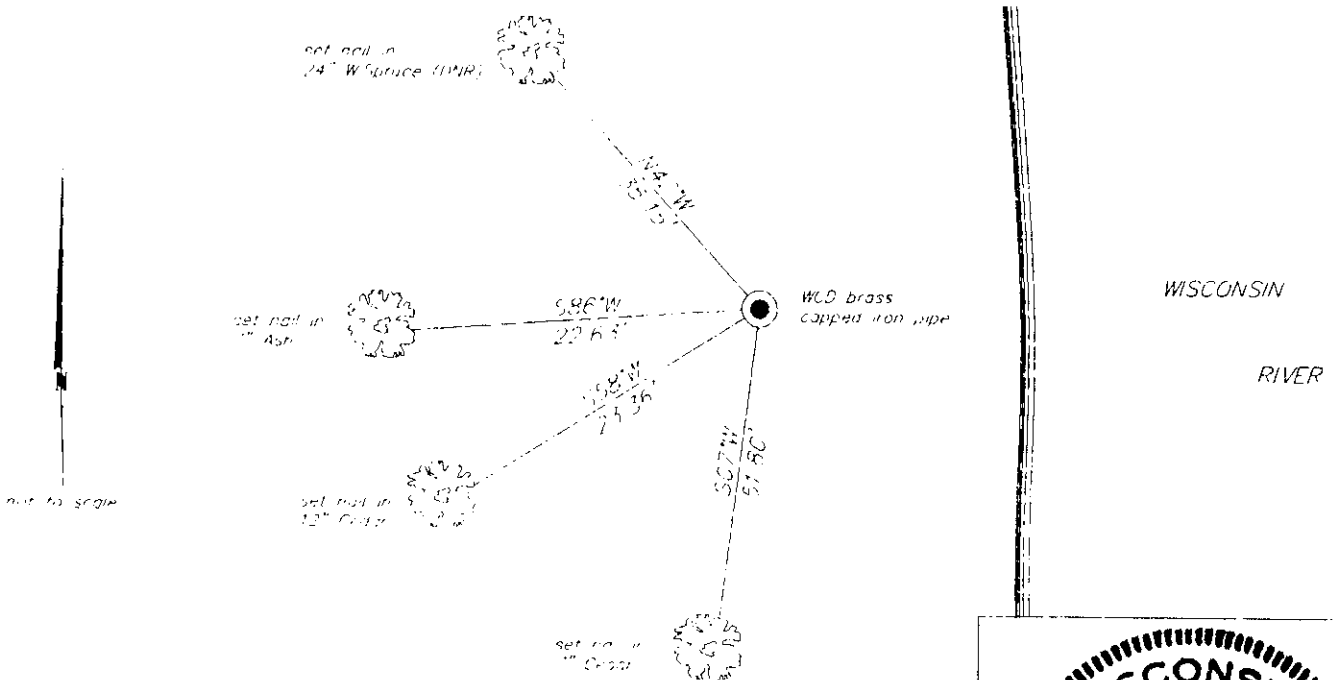
Maple 9" S19°W 8 lks
 Ash 6" N40°W 42 lks

(b)(f)(g)(h) Description of monument found at this corner and if it was accepted—state all evidence (material—testimonial—occupation—plats—records—other monuments) used as a basis for accepting. If not accepted or if nothing was found state evidence used as basis for establishing location. If reestablished through lost corner proportionate methods indicate all monuments—distances and directions used to establish. Indicate type of monument and sign post found or set.

April 30, 1984: USPLS Monument Record by Marvin E. Seymour (Wisconsin DNR) indicates corner is marked by a 2" iron pipe with WCD brass cap and witnessed by the following: Cedar 12" S19°E, 8.57 feet, Cedar 15" S60°W, 22.68 feet, B.Spruce 24" N42°W, 34.13 feet; Ash (dead) 13" N16°W, 21.50 feet

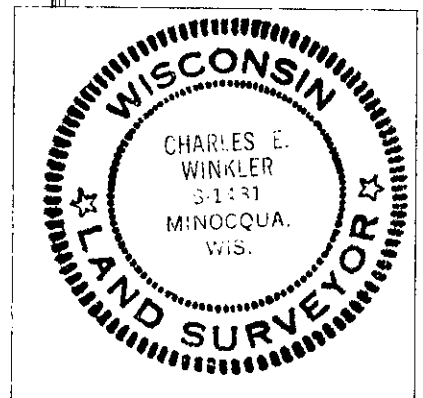
May 5, 1995: I found and accepted a 1" dia. iron pipe with WCD brass cap. I found and established accessories, as shown below and set a plastic signpost North, 1 foot

(c)(d)(e) Plan view of corner with ties to at least 4 witness monuments. If in disagreement with previously established corner—show the distances between the two corners and also indicate the ties to the disputed.



(i) I, Charles E. Winkler, Registered Land Surveyor S-1431
 hereby certify that the corner location on this record was determined by me or under my direction and control and that this U.S. Public Land Survey Monument Record is correct and complete to the best of my knowledge and belief.

Charles E. Winkler 1-30-96
 Signature Foltz and Associates, Inc. Date



INDEX NO. Z-2324

3907310015