

U.S. PUBLIC LAND SURVEY MONUMENT RECORD

Note: This form is intended and designed to fulfill all requirements of Wisconsin Administrative Code, Chapter A-E 7.08 U.S. Public Land Survey Monument Record (3) (a) (b) (c) (d) (e) (f) (g) (h) (i). An additional sheet may be added if necessary to conform with said requirements.

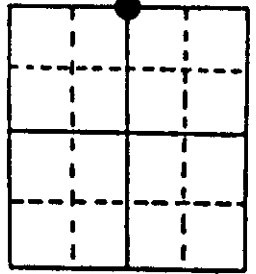
(a) Corner location: Township 39 North Corner: North 1/4 Corner

Section 12 Range 8 East Original Surveyor: A. Anderson

Town/City/Village Newbold

Original B.T.'s: 10" Pj N05°E 15 lks
12" Pj S34°E 10 lks

County Oneida

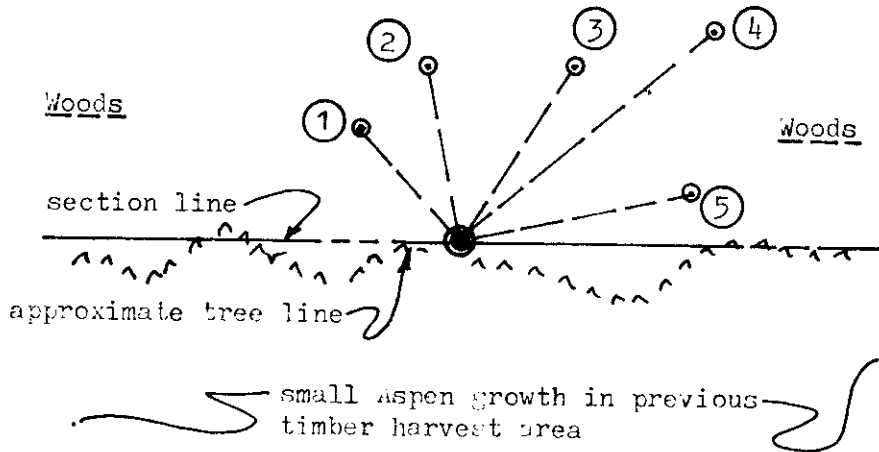


Original Survey Date: July 1863 ● Location

(b) (f) (g) (h) Description of monument found at this corner and if it was accepted, state all evidence (material, testimonial, occupational, plats, records, other monuments) used as a basis for accepting. If not accepted or if nothing was found, state evidence used as basis for establishing location. If reestablished through lost corner proportionate methods, indicate all monuments, distances and directions used to establish. Indicate type of monument found or set and sign post.

Old 2" dia. iron pipe monument found and accepted with incipit top 16" above grade at this corner location; also found an old 4" dia. wood corner marker post with 3" squared top and "1/4 S" face scribing 14" South of corner monument. I replaced 2" dia. iron pipe found with a standard 2" dia. by 48" long iron pipe monument with a stamped brass cap 16" above grade. I also removed the old wood marker post as badly decayed below grade, and replaced it with standard white poly 'T' corner marker post. I left old 2" iron pipe monument flat on grade along north side of new 2" iron pipe monument. All original GLO survey corner evidence is now obliterated or of unreliable condition. In 1958, Wisconsin Valley Improvement Corporation set a 2" iron pipe at this corner by section resurvey at 39.561 chains East of NW section corner and 40.424 chains West of NE section corner; and marked BTs, a 6" Pj N79°E 0.373 chains which is now a 13" Pj and used for new ties below, and a 10" Pj S40°W 1.253 chains which is now a low badly decayed low cut stump unsuitable for ties. Corner is approximately 150' West of the centerline of existing black top pavement for County Highway 'O' and bearing S10°E. This corner recovery completed September 22, 1997; no witnesses.

(c) (d) (e) Plan view of corner with ties to at least 4 witness monuments. If in disagreement with previously established corner, show the distances between the two corners and also indicate the ties to the disputed corner.

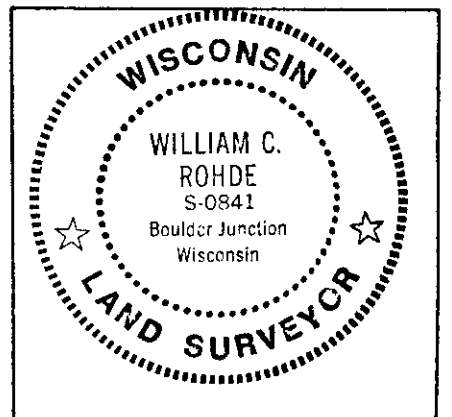


Witness Monument Ties:

- ① New BT 10" Mr of triple, at N41°W 15.89'.
- ② New BT 11" Aspen N11°W 18.40'.
- ③ New BT 11" Aspen N32°E 21.64'.
- ④ New BT 10" Bw N49°E 34.05'.
- ⑤ Record BT 13" Pj with upper face open and lower face shut with plain fissure, at N77°E 24.57'.

Unless otherwise indicated, all BT witness monument ties are to a 1/4" dia. by 2.5" long PK nail with 1.25" dia. steel washer set in unblazed right face bark; and a PK nail with 2" dia. steel washer stamped BT also set in unblazed front face bark of each BT at DBH. All previous corner recovery notes from Wisconsin DNR and/or Oneida County survey records.

Scale: 1" = 20'



(i) I, William C. Rohde, RLS 841
(type or print name) certify that the corner location on this record was determined by me or under my direction and control and that this U.S. Public Land Survey Monument Record is correct and complete to the best of my knowledge and belief.

William C. Rohde Signature 9-29-97 Date

U.S. PUBLIC LAND SURVEY MONUMENT RECORD ADDENDUM

Note: This form is intended and designed to fulfill all requirements of the Wisconsin Administrative Code, Chapter A-E 7.08 U.S. Public Land Monument Record (3)(a)(b)(c)(d)(e)(f)(g)(h)(i). An additional sheet may be added if necessary to conform with said requirements.

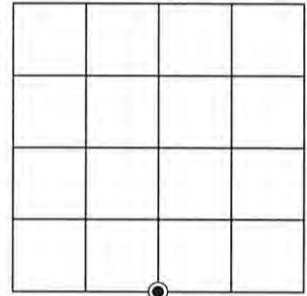
(a) CORNER LOCATION:

South 1/4 Corner of Section 1
Township 39 North
Range 8 East
Town of Newbold
County of Oneida

North:
East:
Datum:
GNSS Method:
GNSS Control:

(RECORDING AREA)

SECTION 1



(b) HISTORY OF ORIGINAL CORNER ESTABLISHMENT

Original Surveyor:
Date of Survey: Commenced
Completed
Original B.T.'S

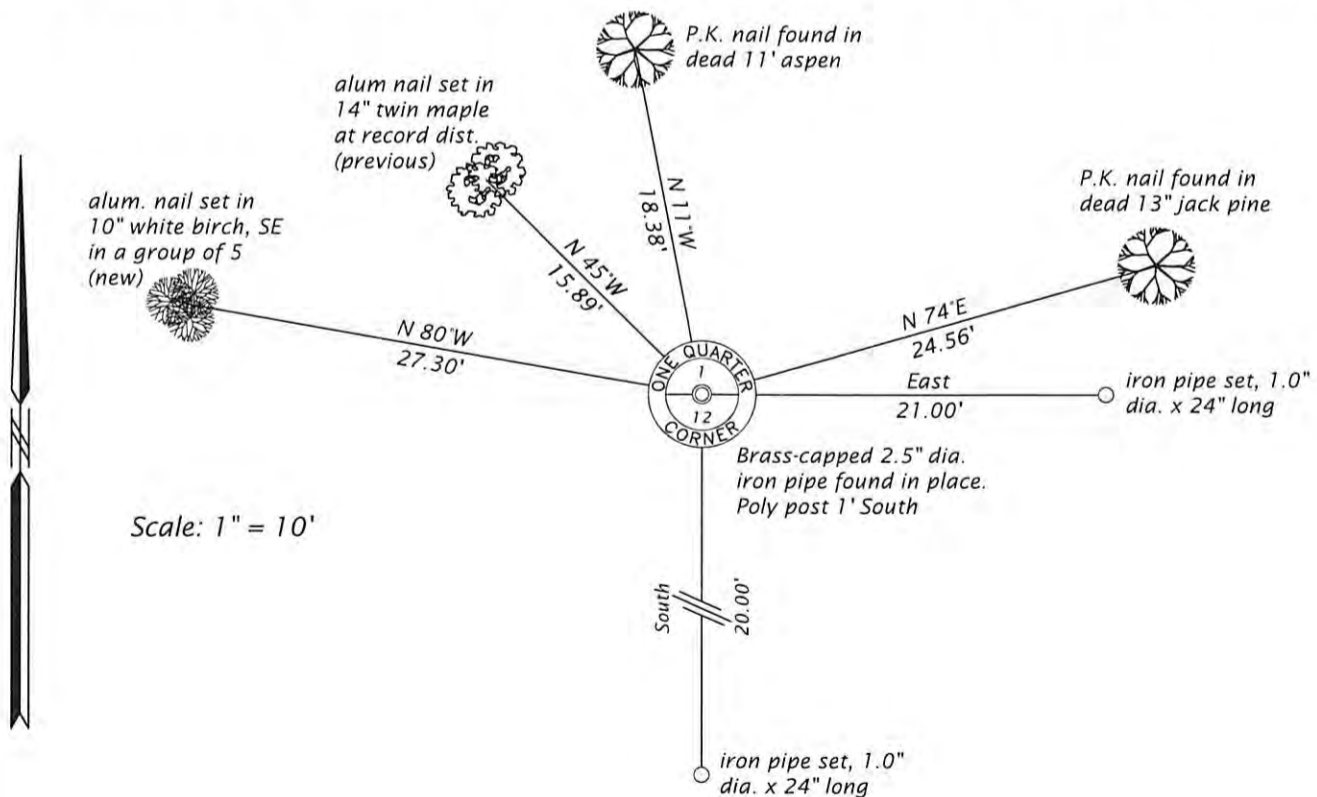
SEE PREVIOUS U.S.P.L.S. MONUMENT RECORD DATED SEPTEMBER 29, 1997

(f)(g)(h) DESCRIPTION OF MONUMENT FOUND AT THIS CORNER AND IF IT WAS ACCEPTED, STATE ALL EVIDENCE (MATERIAL, TESTIMONIAL, OCCUPATIONAL, PLATS, RECORD, OTHER MONUMENTS) USED AS A BASIS FOR ESTABLISHING LOCATION. IF NOT ACCEPTED OR IF NOTHING WAS FOUND, STATE EVIDENCE USED AS BASIS FOR ESTABLISHING LOCATION. IF REESTABLISHED THROUGH LOST CORNER PROPORTIONATE METHODS, INDICATE ALL MONUMENTS, DISTANCES AND DIRECTIONS USED TO ESTABLISH. INDICATE TYPE OF MONUMENT AND SIGN POST FOUND OR SET.

This is a perpetuation of a previous U.S.P.L.S. Monument Record by William C. Rohde, RLS, dated September 29, 1997, and filed in the office of the Oneida County Register of Deeds. A complete history of the corner can be found on the previous monument record. I accept the previous location as a true and faithful perpetuation or reestablishment of the original corner location and further perpetuate it as follows.

March 13, 2025 - James D. Rein, P.L.S. No. S-1234. We found, and I accepted, the brass-capped 2.5" dia. iron pipe set by Rohde in 1997. Three of the previous bearing trees are now dead or stumps. See below for updated references.

(c)(d)(e) PLAN VIEW OF CORNER WITH TIES TO AT LEAST 4 WITNESS MONUMENTS. IF IN DISAGREEMENT WITH PREVIOUSLY ESTABLISHED CORNER, SHOW THE DISTANCE BETWEEN THE TWO CORNERS AND ALSO INDICATE THE TIES TO THE DISPUTED CORNER.



(i) I, JAMES D. REIN, PROFESSIONAL LAND SURVEYOR NO. S-1234 HEREBY CERTIFY THAT THE CORNER LOCATION ON THIS RECORD WAS DETERMINED BY ME OR UNDER MY DIRECTION AND CONTROL AND THAT THIS U.S. PUBLIC LAND SURVEY MONUMENT RECORD IS CORRECT AND COMPLETE TO THE BEST OF MY KNOWLEDGE AND BELIEF.



James D. Rein
SIGNATURE

3/28/25
DATE

INDEX NO. E-23
3908010020