

U.S. PUBLIC LAND SURVEY MONUMENT RECORD

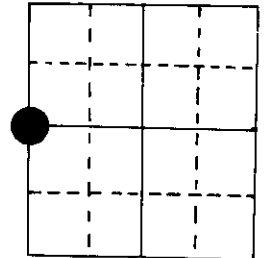
Note: This form is intended and designed to fulfill all requirements of Wisconsin Administrative Code, Chapter A-E 5.02, U.S. Public Land Survey Monument Record (3) (a) (b) (c) (d) (e) (f) (g) (h) (i). An additional sheet may be added if necessary to conform with said requirements.

(a) Corner location: Township 39 North

Range 8 East/~~West~~

Town/~~City/Village~~ of Newbold

County Oneida



W 1/4 Section 1

2" iron pipe with brass cap

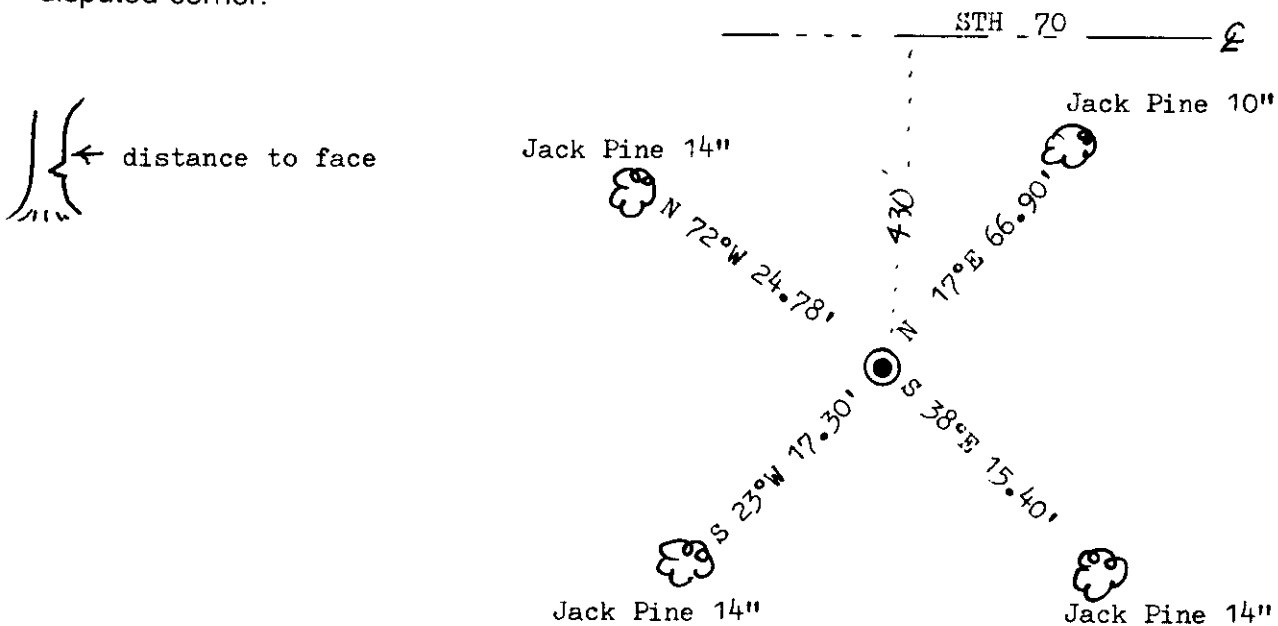
(b) (f) (g) (h) Description of monument found at this corner and if it was accepted, state all evidence (material, testimonial, occupational, plats, records, other monuments) used as a basis for accepting. If not accepted or if nothing was found, state evidence used as basis for establishing location. If reestablished through lost corner proportionate methods, indicate all monuments, distances and directions used to establish.

Original Alex Anderson July 1863. OBT's PY 20" N 19°E 7 lks
PY 24" N 80°W 32 lks

W. Cameron, 1971, computed location but did not monument.

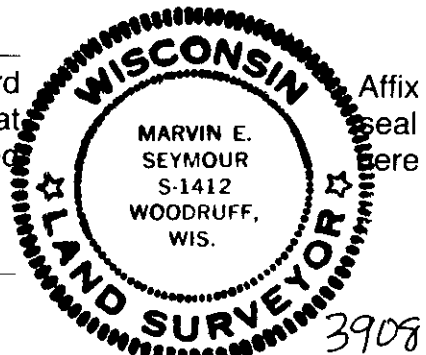
M. Seymour, 1985, used data from Northwoods Surveyor's maps to recompute the location and set D.N.R. brass cap. Made new BT's. Location fell in stump which was more rotten now. I assume that the monument was not previously set due to the stump.

(c) (d) (e) Plan view of corner with ties to at least 4 witness monuments. If in disagreement with previously established corner, show the distances between the two corners and also indicate the ties to the disputed corner.



(i) I, Marvin E. Seymour
(type or print name) certify that the corner location on this record was determined by me or under my direction and control and that this U.S. Public Land Survey Monument Record is correct and complete to the best of my knowledge and belief.

Marvin E. Seymour July 18, 1985
Signature Date



3908022000

G-21

U.S. PUBLIC LAND SURVEY MONUMENT RECORD

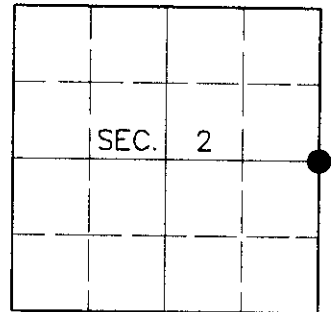
Note: This form is intended and designed to fulfill all requirements of Wisconsin Administrative Code, Chapter A-E 7.08, U.S. Public Land Survey Monument Record (3)(a)(b)(c)(d)(e)(f)(g)(h)(i). An additional sheet may be added if necessary to conform with said requirements.

(a) CORNER LOCATION

East ¼ Corner of Section 2
 Township 39 North
 Range 8 East
 Town of Newbold

State Plane Coordinates

X
 Y
 Datum
 County of Oneida



(b) HISTORY OF ORIGINAL CORNER ESTABLISHMENT

Original Surveyor: Alexander Anderson

Original Bearing Trees:

Date of Survey: Commenced July 22, 1863
 Completed July 31, 1863

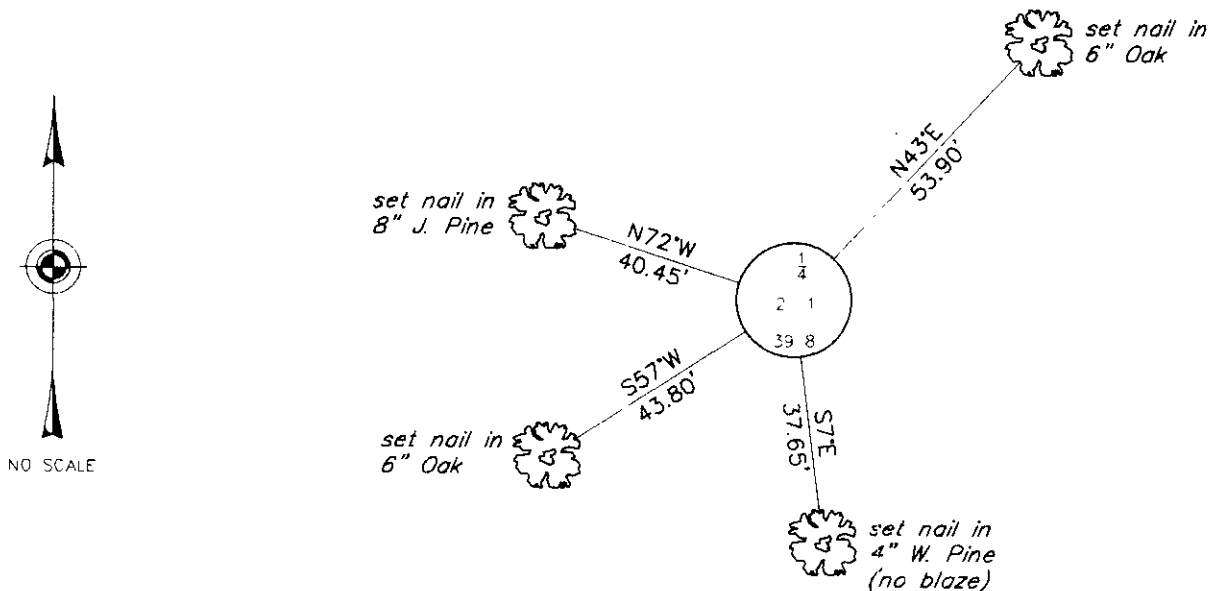
Y. Pine 20 N19°E, 7 links
 Y. Pine 24 N80°W, 32 links

(b)(f)(g)(h) Description of monument found at this corner and if it was accepted, state all evidence (material, testimonial, occupational, plats, records, other monuments) used as a basis for accepting. If not accepted or if nothing was found, state evidence used as basis for establishing location. If reestablished through lost corner proportionate methods, indicate all monuments, distances and directions used to establish. Indicate type of monument and sign post found or set.

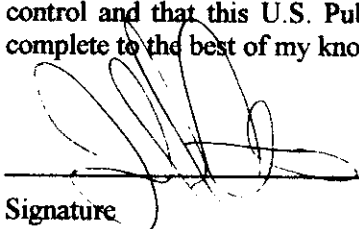
July 18, 1985: U.S. Public Land Survey Monument Record by Marvin E. Seymour, Registered Land Surveyor. Seymour set a DNR brass cap with the following bearing trees: 10" J. Pine N17°E, 66.90 feet; 14" J. Pine S38°E, 15.40 feet; 14" J. Pine S23°W, 17.30 feet; 14" J. Pine N72°W, 24.78 feet.

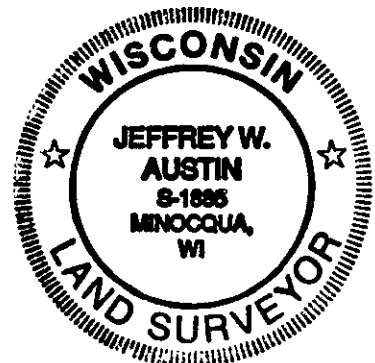
June 28, 2000: I found and accepted a 2-½" dia. iron pipe with 3" dia. brass cap 15" above grade and marked as shown below. I found Seymour's J. Pine snag 9" N68°W, 24.8 feet, his J. Pine stump 10" S38°E, 15.7 feet, and his J. Pine stump 10" S27°W, 17.6 feet. I established accessories as shown below and set a plastic sign post Northeast, 1 foot.

(c)(d)(e) Plan view of corner with ties to at least 4 witness monuments. If in disagreement with previously established corner, show the distances between the two corners and also indicate the ties to the disputed corner.



(i) I, Jeffrey W. Austin, Registered Land Surveyor S-1885, hereby certify that the corner location on this record was determined by me or under my direction and control and that this U.S. Public Land Survey Monument Record is correct and complete to the best of my knowledge and belief.


 Signature _____ Date 7 24 00



INDEX NO. C-21

3908022000