

U.S. PUBLIC LAND SURVEY MONUMENT RECORD

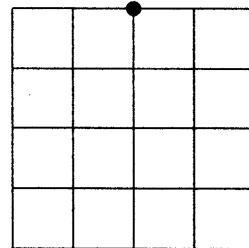
Note: This form is intended and designed to fulfill all requirements of the Wisconsin Administrative Code, Chapter A-E 7.08 U.S. Public Land Monument Record (3)(a)(b)(c)(d)(e)(f)(g)(h)(i). An additional sheet may be added if necessary to conform with said requirements.

(a) CORNER LOCATION:

north quarter corner of Section 9
 Township 39 North
 Range 8 East
 Town of Newbold
 County of Oneida

COORDINATES

North:
 East:
 Control Station:
 Latitude:
 Longitude:
 Datum Method



SECTION 9

(b) HISTORY OF ORIGINAL CORNER ESTABLISHMENT

Original Surveyor: A. Anderson
 Date of Survey: Commenced, July, 1863
 Completed, July, 1863

Original B.T.'S
 Aspen 8" dia. S48°W 15 links
 Birch 10" dia. N3°W 21 links

(f)(g)(h) DESCRIPTION OF MONUMENT FOUND AT THIS CORNER AND IF IT WAS ACCEPTED, STATE ALL EVIDENCE (MATERIAL, TESTIMONIAL, OCCUPATIONS, PLATS, RECORDS, OTHER MONUMENTS) USED AS A BASIS FOR ESTABLISHING LOCATION. IF NOT ACCEPTED OF IF NOTHING WAS FOUND, STATE EVIDENCE USED AS BASIS FOR ESTABLISHING LOCATION. IF REESTABLISHED THROUGH LOST CORNER PROPORTIONATE METHODS, INDICATE ALL MONUMENTS, DISTANCES AND DIRECTIONS USED TO ESTABLISH. INDICATE TYPE OF MONUMENT AND SIGN POST FOUND OR SET.

Original Surveyor: A. Anderson, west corrected between Sections 4 and 9, at 39.80 chains set quarter section post.

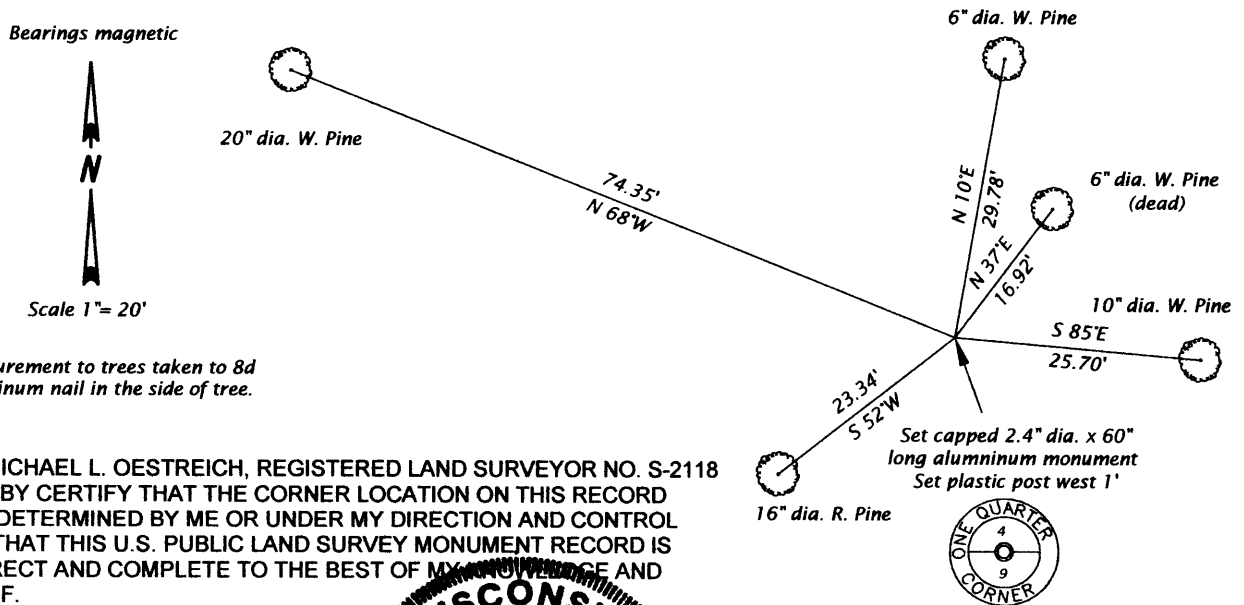
Wisconsin Valley Improvement Corporation: Oneida County Survey Map No. B2552, shows corner to be monumented by an iron pipe, and witnessed by the following bearing trees: 6" J. Pine S75E 26.5' and a 15" W. Pine N69-45W 74.0'.

James G. Griffin: Northwoods Surveyors, August 26, 1965, finds and accepts a 2" dia. iron pipe, witnessed by a 16" W. pine N70W 74.0', and makes a new bearing tree, a 4" dia. White Pine N41E 16.6'.

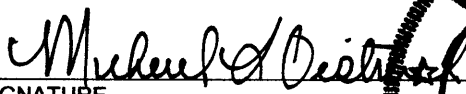
Wisconsin Valley Improvement Corporation: On corner data sheet dated May 24, 1981, identifies corner to be monumented with a 2 3/8" dia. iron pipe, and witnessed by the following bearing trees: 20" White Pine bearing N68W 74.0' distant and a 6" White Pine (dead) bearing N40E 17.0' distant.

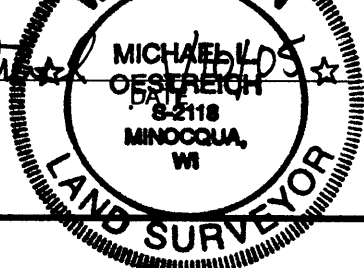
Michael L. Oestreich: 10/25/04, recovered a 2.4" dia. iron pipe, and the following witnesses: a 20" dia. White Pine, blaze and scribing still visible, N68W 74.35' to aluminum nail in side of tree and a 6" dia. White Pine (dead) blaze and scribing still visible, N37E 16.92' to aluminum nail in side of tree. I replaced the iron pipe with a capped aluminum monument, stamped to identify corner, and made ties as shown in the plan below.

(c)(d)(e) PLAN VIEW OF CORNER WITH TIES TO AT LEAST 4 WITNESS MONUMENTS. IF IN DISAGREEMENT WITH PREVIOUSLY ESTABLISHED CORNER, SHOW THE DISTANCE BETWEEN THE TWO CORNERS AND ALSO INDICATE THE TIES TO THE DISPUTED CORNER.



(i) I, MICHAEL L. OESTREICH, REGISTERED LAND SURVEYOR NO. S-2118 HEREBY CERTIFY THAT THE CORNER LOCATION ON THIS RECORD WAS DETERMINED BY ME OR UNDER MY DIRECTION AND CONTROL AND THAT THIS U.S. PUBLIC LAND SURVEY MONUMENT RECORD IS CORRECT AND COMPLETE TO THE BEST OF MY KNOWLEDGE AND BELIEF.


 SIGNATURE



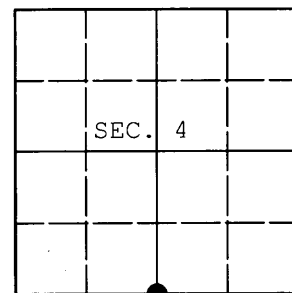
390804 0020

INDEX NO. E 11

U.S. PUBLIC LAND SURVEY MONUMENT RECORD

Note: This form is intended and designed to fulfill all requirements of Wisconsin Administrative Code, Chapter A-E 7.08 U.S. Public Land Survey Monument Record (3) (a) (b) (c) (d) (e) (f) (g) (h) (i). An additional sheet may be added if necessary to conform with said requirements.

(a) CORNER LOCATION: WISCORS (Oneida County)
1/4 Cor. of Secs. 4 & 9 N: 256,646.10 USft
Township 39 North E: 241,871.83 USft
Range 8 East of the 4th P.M. Datum: NAD 1983(2011)
Town of Newbold County of Oneida



(b) HISTORY OF ORIGINAL CORNER ESTABLISHMENT

Original Surveyor: Original Accessories:
Date of Survey: Commenced:
Completed:

(b) (f) (g) (h) Description of monument found at this corner and if it was accepted, state all evidence (material, testimonial, occupational, plats, records, other monuments) used as a basis for accepting. If not accepted or if nothing was found, state evidence used as basis for establishing location. If re-established through lost corner proportionate methods, indicate all monuments, distances and directions used to establish. Indicate type of monument and sign post found or set.

NOTE: This is a perpetuation of a previous USPLS Monument Record by Michael L. Oestreich, RLS dated January 10, 2005 and filed in the office of the Oneida County Register of Deeds. A complete history of the corner can be found on the previous monument record. I accept the previous location as a true and faithful perpetuation or reestablishment of the original corner location and further perpetuate it as follows.

March 26, 2014: I found and accepted Oestreich's monument, a 2.5" diam. aluminum monument with Oneida Co. aluminum cap. Oestreich's accessories were found in substantial agreement with his previous record and were not remeasured as the sole purpose of this work is to report the coordinates of the corner point.

The coordinates shown were derived from offset RTN GPS observations referenced to the WISCORS network.

(c) (d) (e) Plan view of corner with ties to at least 4 witness monuments. If in disagreement with previously established corner, show the distances between the two corners and also indicate the ties to the disputed.

REGISTER OF DEEDS OFFICE
ONEIDA COUNTY
FILED

MAY 22 2014

AT _____ O'CLOCK _____ M
KYLE J. FRANSON
REGISTER OF DEEDS

(i) I, Jeffrey W. Austin, Registered Land Surveyor No. S-1885, hereby certify that the corner location on this record was determined by me or under my direction and control and that this U.S. Public Land Survey Monument Record is correct and complete to the best of my knowledge and belief.



Signature

Date

MAY 9, 2014