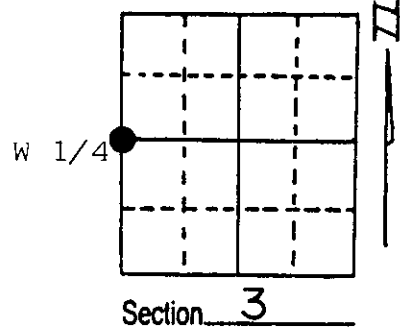


U.S. PUBLIC LAND SURVEY MONUMENT RECORD

Note: This form is intended and designed to fulfill all requirements of Wisconsin Administrative Code, Chapter A-E 5.02, U.S. Public Land Survey Monument Record (3) (a) (b) (c) (d) (e) (f) (g) (h) (i). An additional sheet may be added if necessary to conform with said requirements.

(a) Corner location: Township 39 North
 Range 8 East/West
 Town/City/Village Newbold
 County Oneida

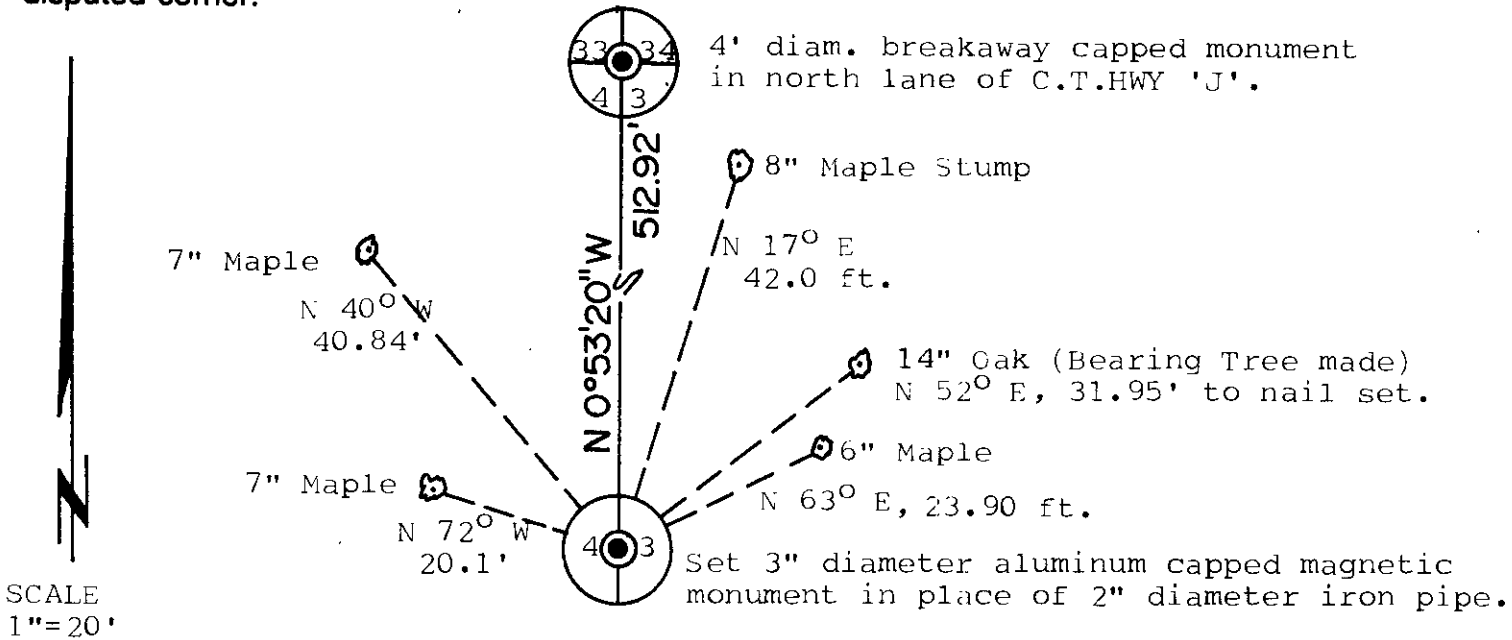


(b) (f) (g) (h) Description of monument found at this corner and if it was accepted, state all evidence (material, testimonial, occupational, plats, records, other monuments) used as a basis for accepting. If not accepted or if nothing was found, state evidence used as basis for establishing location. If reestablished through lost corner proportionate methods, indicate all monuments, distances and directions used to establish.

Found 2" X 30" Iron pipe as shown on the Wilderness Surveying Inc. map dated August 31, 1979, O.C.S. map File #B1062.
 Found the following bearing trees:
 7" Maple N 72° W, 20.1 feet Pk nail found in tree.
 7" Maple N 40° W, 40.84 ft. Nail set in side of tree.
 6" Maple N 63° E, 23.90 ft. " " " "
 8" Maple stump N 17° E, 42.0 ft. To face of tree.

Iron pipes found in place from previous Surveyors appear to have used the 2" iron pipe indicated above as the W 1/4 corner of Section 3.
 (See O.C.S. map file#B1492.)

(c) (d) (e) Plan view of corner with ties to at least 4 witness monuments. If in disagreement with previously established corner, show the distances between the two corners and also indicate the ties to the disputed corner.



(i) I, Stephen J. Favorite, Registered Land Surveyor #S-1616

(type or print name) certify that the corner location on this record was determined by me or under my direction and control and that this U.S. Public Land Survey Monument Record is correct and complete to the best of my knowledge and belief.

Stephen J. Favorite December 29, 1986
 Signature Date



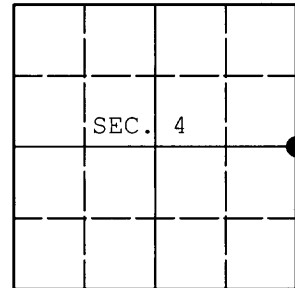
Index No. C-13

#0 3908042000

U.S. PUBLIC LAND SURVEY MONUMENT RECORD

Note: This form is intended and designed to fulfill all requirements of Wisconsin Administrative Code, Chapter A-E 7.08 U.S. Public Land Survey Monument Record (3) (a) (b) (c) (d) (e) (f) (g) (h) (i). An additional sheet may be added if necessary to conform with said requirements.

(a) CORNER LOCATION: WISCRS (Oneida County)
1/4 Cor. of Secs. 3 & 4 N: 259,238.88 USft
Township 39 North E: 244,509.37 USft
Range 8 East of the 4th P.M. Datum: NAD 1983(2011)
Town of Newbold County of Oneida



(b) HISTORY OF ORIGINAL CORNER ESTABLISHMENT

Original Surveyor: Original Accessories:
Date of Survey: Commenced:
Completed:

(b) (f) (g) (h) Description of monument found at this corner and if it was accepted, state all evidence (material, testimonial, occupational, plats, records, other monuments) used as a basis for accepting. If not accepted or if nothing was found, state evidence used as basis for establishing location. If re-established through lost corner proportionate methods, indicate all monuments, distances and directions used to establish. Indicate type of monument and sign post found or set.

NOTE: This is a perpetuation of a previous USPLS Monument Record by Stephen J. Favorite, RLS dated December 29, 1986 and filed in the office of the Oneida County Register of Deeds. A complete history of the corner can be found on the previous monument record. I accept the previous location as a true and faithful perpetuation or reestablishment of the original corner location and further perpetuate it as follows.

May 6, 2014: I found and accepted Favorite's monument, a 2.5" diam. aluminum monument with Oneida Co. aluminum cap. Favorite's accessories were found in substantial agreement with his previous record and were not remeasured as the sole purpose of this work is to report the coordinates of the corner point.

The coordinates shown were derived from a direct RTN GPS observation referenced to the WISCORS network.

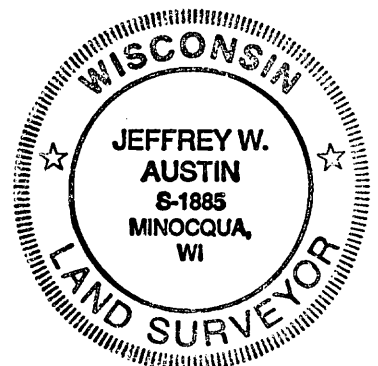
(c) (d) (e) Plan view of corner with ties to at least 4 witness monuments. If in disagreement with previously established corner, show the distances between the two corners and also indicate the ties to the disputed.

REGISTER OF DEEDS
ONEIDA COUNTY
FILE#

MAY 22 2014

AT _____ O'CLOCK _____ M
KYLE J. FRANSON
REGISTER OF DEEDS

(i) I, Jeffrey W. Austin, Registered Land Surveyor No. S-1885, hereby certify that the corner location on this record was determined by me or under my direction and control and that this U.S. Public Land Survey Monument Record is correct and complete to the best of my knowledge and belief.



Signature

MAY 9, 2014
Date

U.S. PUBLIC LAND SURVEY MONUMENT RECORD

REGISTER OF DEEDS OFFICE
ONEIDA COUNTY
FILED

FEB 22 2022

Note: This form is intended and designed to fulfill all requirements of the Wisconsin Administrative Code, Chapter A-E 7.08 U.S. Public Land Monument Record (3)(a)(b)(c)(d)(e)(f)(g)(h)(i). An additional sheet may be added if necessary to conform with said requirements.

KYLE J. FRANSON
REGISTER OF DEEDS

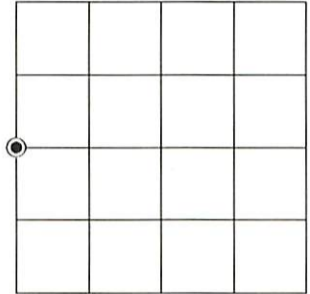
(a) CORNER LOCATION:

West Quarter Corner of Section 3
Township 39 North
Range 8 East
Town of Newbold
County of Oneida

North:
East:
Datum:
GNSS Method:
GNSS Control:

(RECORDING AREA)

SECTION 3



(b) HISTORY OF ORIGINAL CORNER ESTABLISHMENT

Original Surveyor:
Date of Survey: Commenced
Completed
Original B.T.'S

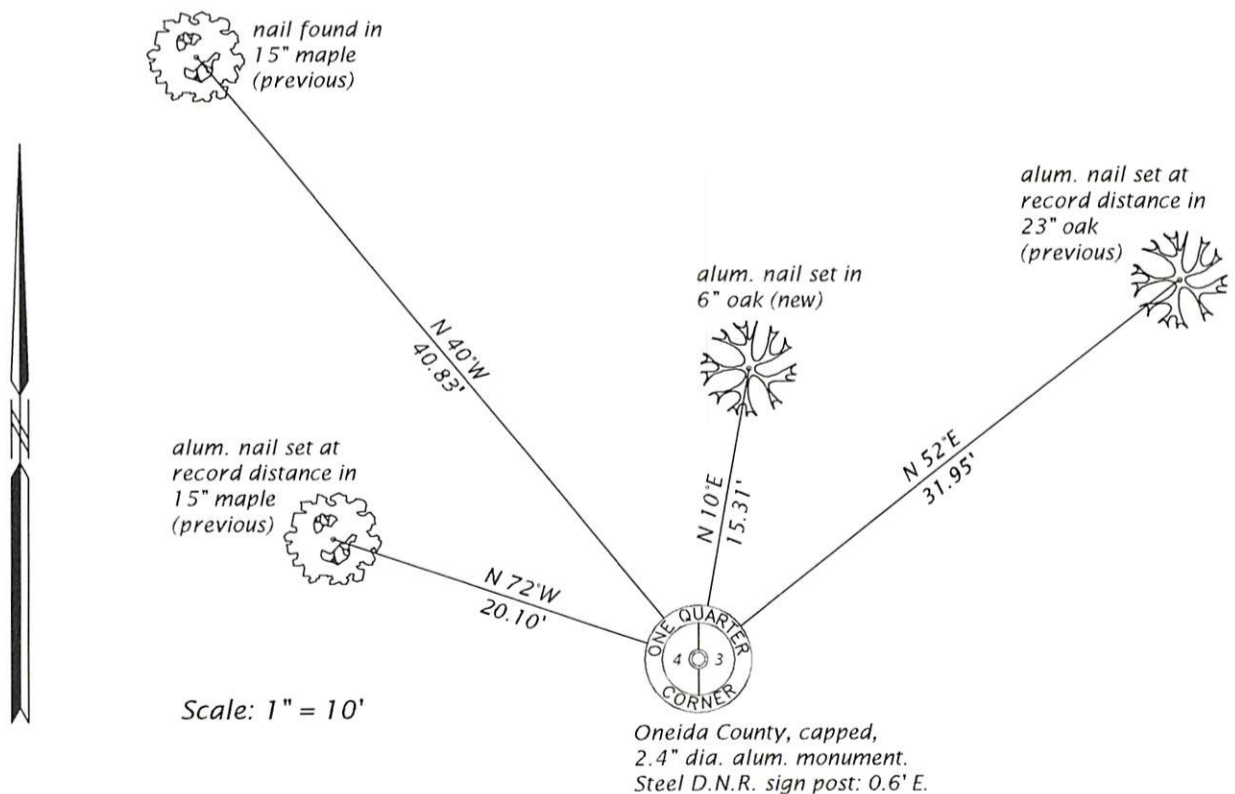
SEE PREVIOUS U.S.P.L.S. MONUMENT
RECORD DATED DECEMBER 29, 1986.

(f)(g)(h) DESCRIPTION OF MONUMENT FOUND AT THIS CORNER AND IF IT WAS ACCEPTED, STATE ALL EVIDENCE (MATERIAL, TESTIMONIAL, OCCUPATIONAL, PLATS, RECORD, OTHER MONUMENTS) USED AS A BASIS FOR ESTABLISHING LOCATION. IF NOT ACCEPTED OR IF NOTHING WAS FOUND, STATE EVIDENCE USED AS BASIS FOR ESTABLISHING LOCATION. IF REESTABLISHED THROUGH LOST CORNER PROPORTIONATE METHODS, INDICATE ALL MONUMENTS, DISTANCES AND DIRECTIONS USED TO ESTABLISH. INDICATE TYPE OF MONUMENT AND SIGN POST FOUND OR SET.

This is a perpetuation of a previous U.S.P.L.S. Monument Record by Stephen J. Favorite, RLS, dated December 29, 1986, and filed in the office of the Oneida County Register of Deeds. A complete history of the corner can be found on the previous monument record. I accept the previous location as a true and faithful perpetuation or reestablishment of the original corner location and further perpetuate it as follows.

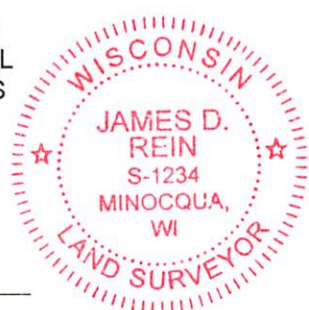
January 25, 2022, we found and I accepted the Oneida County capped aluminum monument set by Favorite in 1986. The previous northeasterly maple bearing tree and the northeasterly maple stump are now gone. See below for update references.

(c)(d)(e) PLAN VIEW OF CORNER WITH TIES TO AT LEAST 4 WITNESS MONUMENTS. IF IN DISAGREEMENT WITH PREVIOUSLY ESTABLISHED CORNER, SHOW THE DISTANCE BETWEEN THE TWO CORNERS AND ALSO INDICATE THE TIES TO THE DISPUTED CORNER.



Oneida County, capped,
2.4" dia. alum. monument.
Steel D.N.R. sign post: 0.6' E.

(i) I, JAMES D. REIN, PROFESSIONAL LAND SURVEYOR NO. S-1234 HEREBY CERTIFY THAT THE CORNER LOCATION ON THIS RECORD WAS DETERMINED BY ME OR UNDER MY DIRECTION AND CONTROL AND THAT THIS U.S. PUBLIC LAND SURVEY MONUMENT RECORD IS CORRECT AND COMPLETE TO THE BEST OF MY KNOWLEDGE AND BELIEF.



James D. Rein
SIGNATURE

2-16-22
DATE

INDEX NO. C - 13
3908042000