

U.S. PUBLIC LAND SURVEY MONUMENT RECORD

Note: This form is intended and designed to fulfill all requirements of Wisconsin Administrative Code, Chapter A-E 5.02, U.S. Public Land Survey Monument Record (3) (a) (b) (c) (d) (e) (f) (g) (h) (i). An additional sheet may be added if necessary to conform with said requirements.

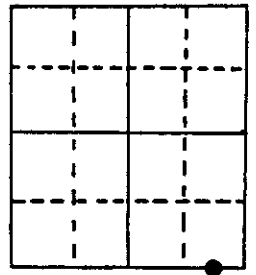
(a) Corner location: Township 39 North

Range 8 East/West

Town/City/Village NEWBOLD

County ONEIDA

WITNESS
MEANDER
CORNER



Section 7

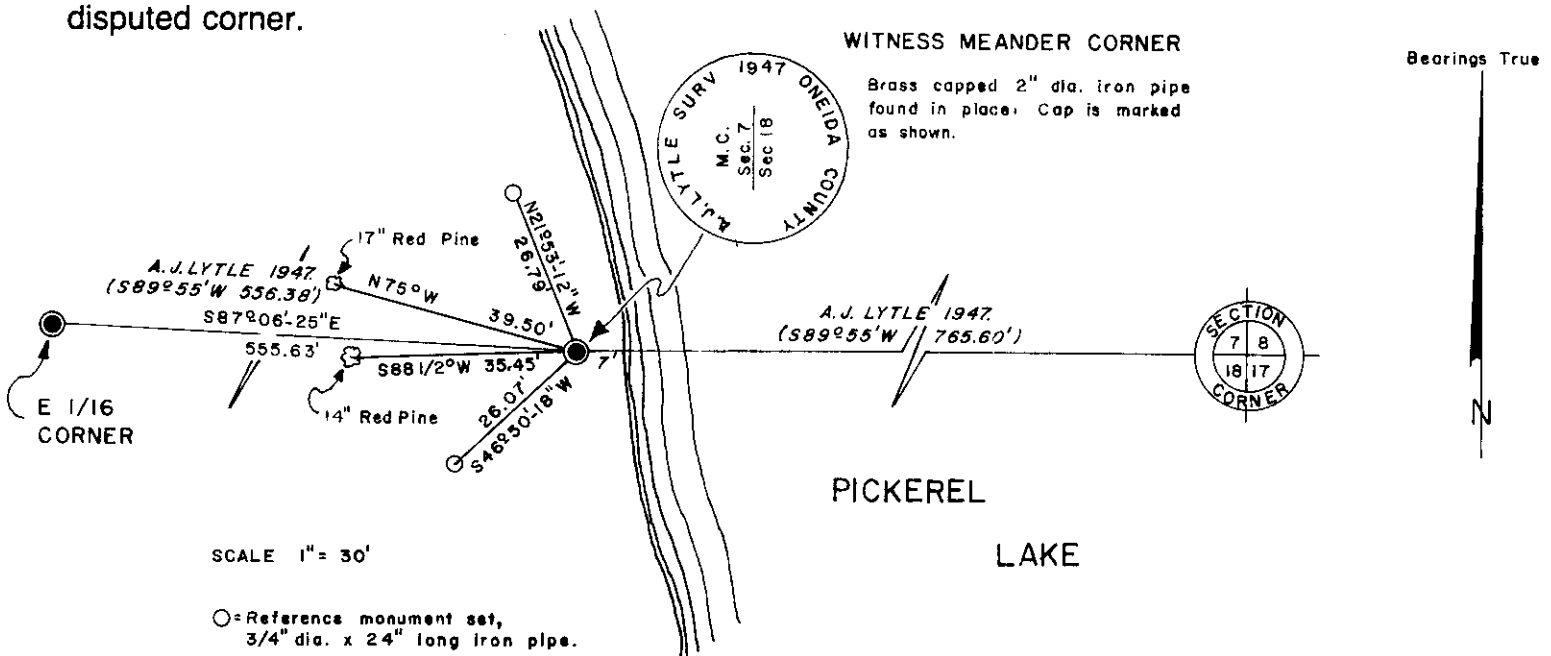
(b) (f) (g) (h) Description of monument found at this corner and if it was accepted, state all evidence (material, testimonial, occupational, plats, records, other monuments) used as a basis for accepting. If not accepted or if nothing was found, state evidence used as basis for establishing location. If reestablished through lost corner proportionate methods, indicate all monuments, distances and directions used to establish.

July 1863- Alexander Anderson, Deputy Surveyor, Section Corner in Pond, Set witness corner 10.14 chains west. Original bearing trees- Maple 10" S16°W, 33 links
Maple 5" N87°W, 36 links

April 1947-A. J. Lytle, Oneida County Surveyor, Established section corner in ice S89°-55'W 11.60 chains over flowage. Set M.C. (iron pipe Br.Cap) Bearing trees- Y. Pine 14" N77°-15'W 60 links; Y. Pine 12" S85°30'W, 53.5 links

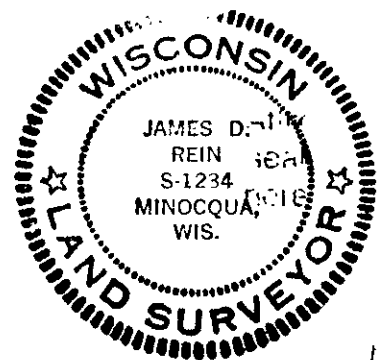
Nov. 14, 1984- James D. Rein, R.L.S. Found brass capped 2" dia. iron pipe marked to identify corner. Set aluminum nail in center side root crown of Lytle's B.T.s: 17" Red Pine N75°W, 39.50 feet - 14" Red Pine S88-1/2°W, 35.45 feet.

(c) (d) (e) Plan view of corner with ties to at least 4 witness monuments. If in disagreement with previously established corner, show the distances between the two corners and also indicate the ties to the disputed corner.



(i) I, JAMES D. REIN, Reg. Land Surveyor No. S-1234
(type or print name) certify that the corner location on this record was determined by me or under my direction and control and that this U.S. Public Land Survey Monument Record is correct and complete to the best of my knowledge and belief.

James D. Rein Signature
November 29, 1984 Date



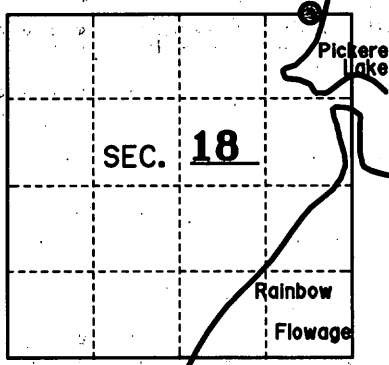
Index No. 5-4

3908070004

U.S. PUBLIC LAND SURVEY MONUMENT RECORD

Note: This form is intended and designed to fulfill all requirements of Wisconsin Administrative Code, Chapter A-E 7.08 U.S. Public Land Monument Record. (3)(a)(b)(c)(d)(e)(f)(g)(h)(i). An additional sheet may be added if necessary to conform with said requirements. [Deeds Square]

(a) CORNER LOCATION: North line Sec. 18
 Witness Meander Corner of Section 18
 Township 39 North, Range 8 East
 Township/City Newbold
 County of Oneida



REGISTER OF DEEDS OFFICE
ONEIDA COUNTY, WIS.

F I L E D

JAN 10 2011

At O'Clock M
THOMAS H. LEIGHTON
 REGISTER OF DEEDS

(b) HISTORY OF ORIGINAL ESTABLISHMENT
 Original Surveyor: Alex Anderson
 Date of Survey: July 1863
 Original B.T.'s:

10" Maple S 16°W 33 lks.
 5" Maple N 87°W 36 lks.

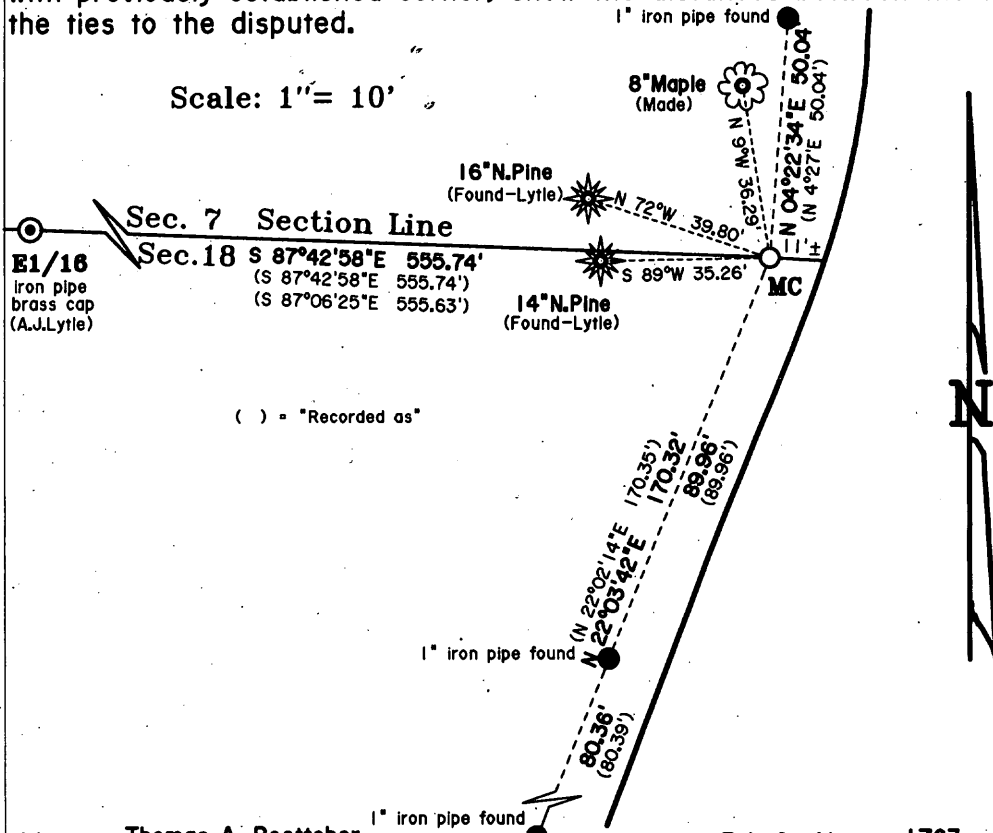
County or State Plane Coordinates
 Northing _____
 Easting _____
 Datum Base _____

(b)(f)(g)(h) Description of monument found at this corner and if it was accepted, state all evidence (material, testimonial, occupational, plats, records, other monuments) used as a basis for accepting. If not accepted or if nothing was found, state evidence used as basis for establishing location. If reestablished through lost corner proportionate methods, indicate all monuments, distances and directions used to establish. Indicate type of monument and sign post found or set.

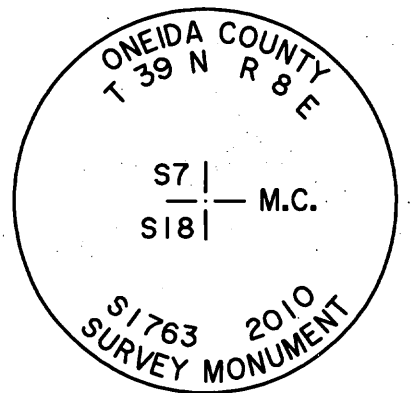
November 29, 1984: James D. Rein filed a U.S. Public Land Survey Monument Record for this corner where he found a 2" dia. iron pipe with a brass cap originally set by A. J. Lytle. See the recorded land corner form for the corner history and corner references and BT's.

September 24, 2010: Thomas A. Boettcher and Michael E. Weber of Eagle Landmark Surveying while doing a survey in the area found that the monument set by Lytle has been completely knocked out by shoreline landscaping and that the corner is gone. We reestablished the position using iron pipe found from Eagle Landmark Survey No. 8494 and set a 60d nail at the former position. A Certified Survey was recorded on November 4th, 2010, that shows the reset Meander Corner, as Certified Survey Map No. 3867. The two iron pipe reference monuments by Rein are now also gone and the position for each fall in a landscaped stone wall built about 10 to 15 feet back from the shore. On November 3, 2010 we returned to the site and set an Oneida County 2-1/2" diameter x 30" long aluminum capped monument stamped as shown below about 11' from the OHWM and flush with the ground. We found both of Lytle's BT's OK with old blazes almost grown over and made one new BT as shown below with no blaze or sign post set since the corner falls in a front yard. We also used the three iron pipe found in place as references to the corner as shown below.

(c)(d)(e) Plan view of the corner with ties to at least 4 witness monuments. If in disagreement with previously established corner, show the distances between the two corners and also indicate the ties to the disputed.



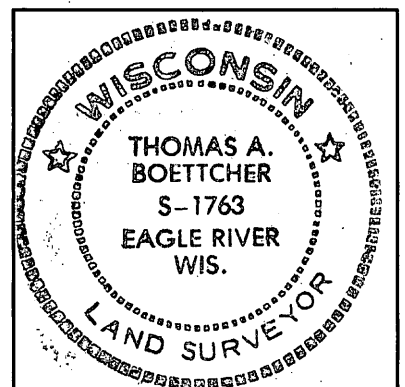
NOTE: Bearing trees are measured to a nail in the side.



(i) I, Thomas A. Boettcher R.L.S. No. 1763
 hereby certify that the corner location on this record was determined by me or under my direction and control and that this U.S. Public Land Survey Monument Record is correct and complete to the best of my knowledge and belief.

Signature [Handwritten Signature]

Date December 15, 2010



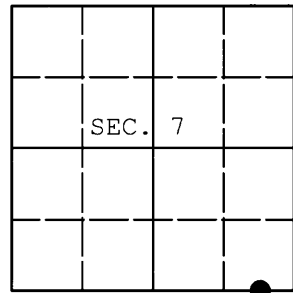
Index No. J 4-5 3908070004

J 4-5

U. S. PUBLIC LAND SURVEY MONUMENT RECORD

Note: This form is intended and designed to fulfill all requirements of Wisconsin Administrative Code, Chapter A-E 7.08 U.S. Public Land Survey Monument Record (3) (a) (b) (c) (d) (e) (f) (g) (h) (i). An additional sheet may be added if necessary to conform with said requirements.

(a) CORNER LOCATION: WISCORS (Oneida County)
Meander Cor. of Secs. 7 & 18 N: 251,420.47 USft
Township 39 North E: 233,348.74 USft
Range 8 East of the 4th P.M. Datum: NAD 1983(2011)
Town of Newbold County of Oneida



(b) HISTORY OF ORIGINAL CORNER ESTABLISHMENT

Original Surveyor: Original Accessories:
Date of Survey: Commenced:
Completed:

(b) (f) (g) (h) Description of monument found at this corner and if it was accepted, state all evidence (material, testimonial, occupational, plats, records, other monuments) used as a basis for accepting. If not accepted or if nothing was found, state evidence used as basis for establishing location. If re-established through lost corner proportionate methods, indicate all monuments, distances and directions used to establish. Indicate type of monument and sign post found or set.

NOTE: This is a perpetuation of a previous USPLS Monument Record by Thomas A. Boettcher, RLS dated December 15, 2010 and filed in the office of the Oneida County Register of Deeds. A complete history of the corner can be found on the previous monument record. I accept the previous location as a true and faithful perpetuation or reestablishment of the original corner location and further perpetuate it as follows.

March 19, 2014: I found and accepted Boettcher's monument; a 2.5" diam. aluminum monument with Oneida Co. aluminum cap. Boettcher's accessories were found in substantial agreement with his previous record and were not remeasured as the sole purpose of this work is to report the coordinates of the corner point.

The coordinates shown were derived from a direct RTN GPS observation referenced to the WISCORS network.

(c) (d) (e) Plan view of corner with ties to at least 4 witness monuments. If in disagreement with previously established corner, show the distances between the two corners and also indicate the ties to the disputed.

REGISTER OF DEEDS OFFICE
ONEIDA COUNTY
FILED

MAY 22 2014

AT _____ O'CLOCK _____ M
KYLE J. FRANSON
REGISTER OF DEEDS

(i) I, Jeffrey W. Austin, Registered Land Surveyor No. S-1885, hereby certify that the corner location on this record was determined by me or under my direction and control and that this U.S. Public Land Survey Monument Record is correct and complete to the best of my knowledge and belief.



Signature

MAY 9, 2014

Date

3908070004 (INDEX NO. J-4,5)