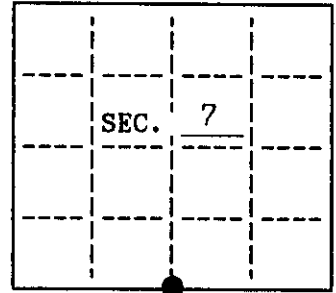


**U.S. PUBLIC LAND SURVEY MONUMENT RECORD**

Note: This form is intended and designed to fulfill all requirements of Wisconsin Administrative Code, Chapter A-E 7.08 U.S. Public Land Survey Monument Record (3)(a)(b)(c)(d)(e)(f)(g)(h)(i). An additional sheet may be added if necessary to conform with said requirements.

(a) CORNER LOCATION: State Plane Coordinates  
 South 1/4 corner of Sec. 7 X Not Available  
 Township 39 North Y Not Available  
 Range 8 East Datum Base \_\_\_\_\_  
 Town/City Newbold County of Oneida



(b) HISTORY OF ORIGINAL CORNER ESTABLISHMENT  
 Original Surveyor: Alexander Anderson Original B.T.'S  
 Date of Survey: Commenced July 22, 1863 7" Tam S 36° W 7 lks.  
Completed July 31, 1863 7" Tam N 34° W 18 lks.

(b)(f)(g)(h) Description of monument found at this corner and if it was accepted, state all evidence (material, testimonial, occupational, plats, records, other monuments) used as a basis for accepting. If not accepted or if nothing was found, state evidence used as basis for establishing location. If reestablished through lost corner proportionate methods, indicate all monuments, distances and directions used to establish. Indicate type of monument and sign post found or set.

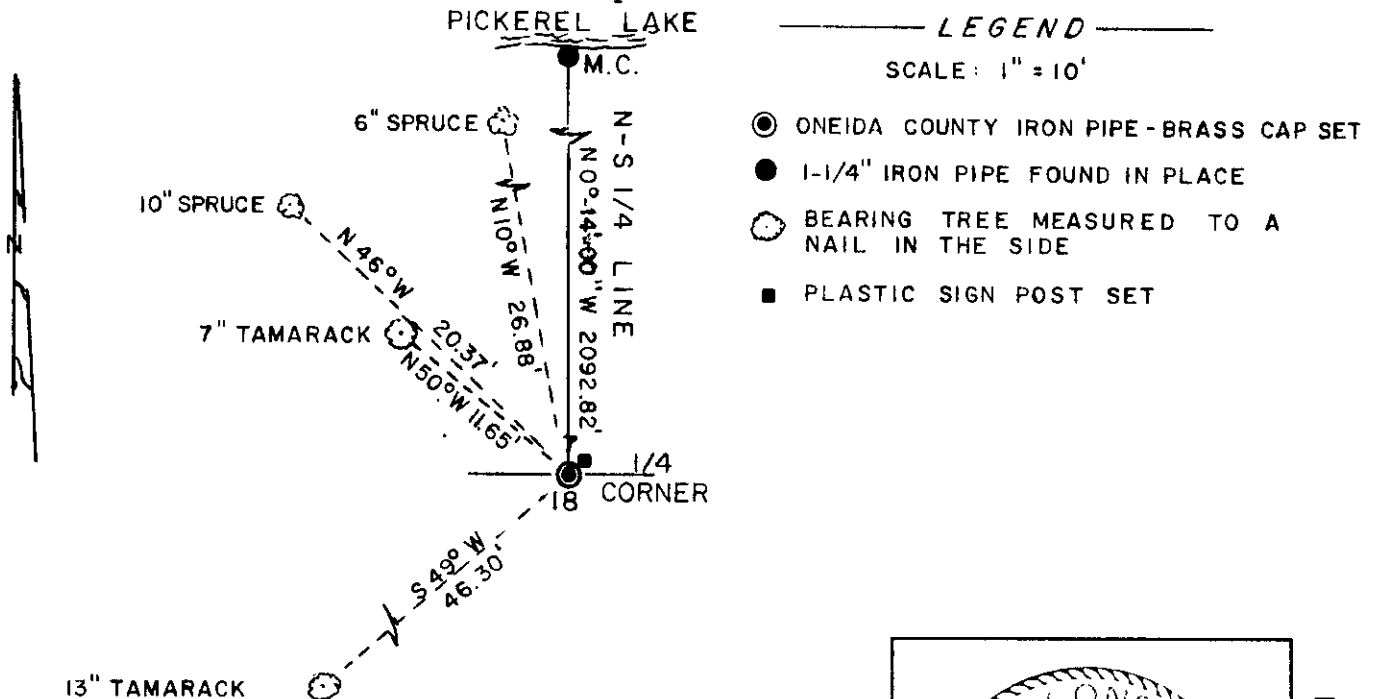
Nov. 1951: Robert Bandow used an iron pipe with the following B.T.'s- 7" Tam. S36°W 4.6' & Tamarack N 34° W 11.9'

April 25, 1991: Found 2" iron pipe in swamp used by Robert Bandow. Replaced the iron pipe with an Oneida County 2"x60" iron pipe brass cap. Set a plastic sign marker 0.10' northeast of the corner.

Made the following new bearing trees measured to a nail in the side:

- 13" Tamarack S 49° W 46.30'
- 7" Tamarack N 50° W 11.65'
- 10" Spruce N 46° W 20.37'
- 6" Spruce N 10° W 26.88'

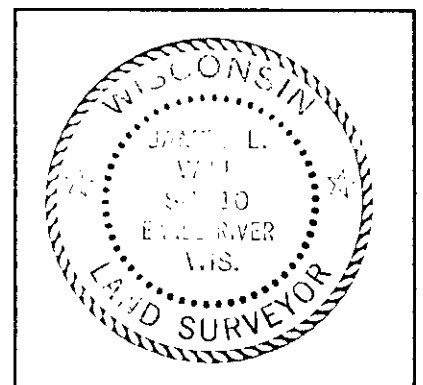
(c)(d)(e) Plan view of corner with ties to at least 4 witness monuments. If in disagreement with previously established corner, show the distances between the two corners and also indicate the ties to the disputed.



(i) I, James L. Will, R.L.S. #1410 hereby certify that the corner location on this record was determined by me or under my direction and control and that this U.S. Public Land Survey Monument Record is correct and complete to the best of my knowledge and belief.

Signature

May 1, 1991  
 Date



INDEX NO. J-3

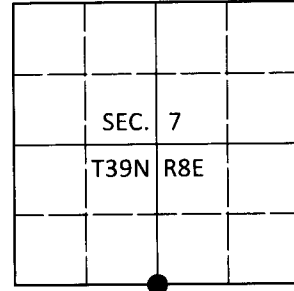
3908070020

# U.S. PUBLIC LAND SURVEY MONUMENT RECORD

Note: This form is intended and designed to fulfill all requirements of Wisconsin Administrative Code, Chapter A-E 7.08 U.S. Public Land Survey Monument Record (3)(a-i).

(a) CORNER LOCATION  
 1/4 Cor. of Secs. 7 & 18  
 Township 39 North  
 Range 8 East of the 4th P.M.  
 Town of Newbold  
 County of Oneida

WISCRS - Oneida County  
 N: 251,516.60 USft  
 E: 231,472.95 USft  
 Datum: NAD 83(2011)  
 GNSS Method: RTN - Direct  
 GNSS Control: WISCORS VRS



(b) HISTORY OF ORIGINAL CORNER ESTABLISHMENT

Original Surveyor: Alexander Anderson

Original Accessories:

Date of Survey Commenced: July 22, 1863  
 Completed: July 31, 1863

tamarack 7" S36°W, 7 lks.  
 tamarack 7" N34°W, 18 lks.

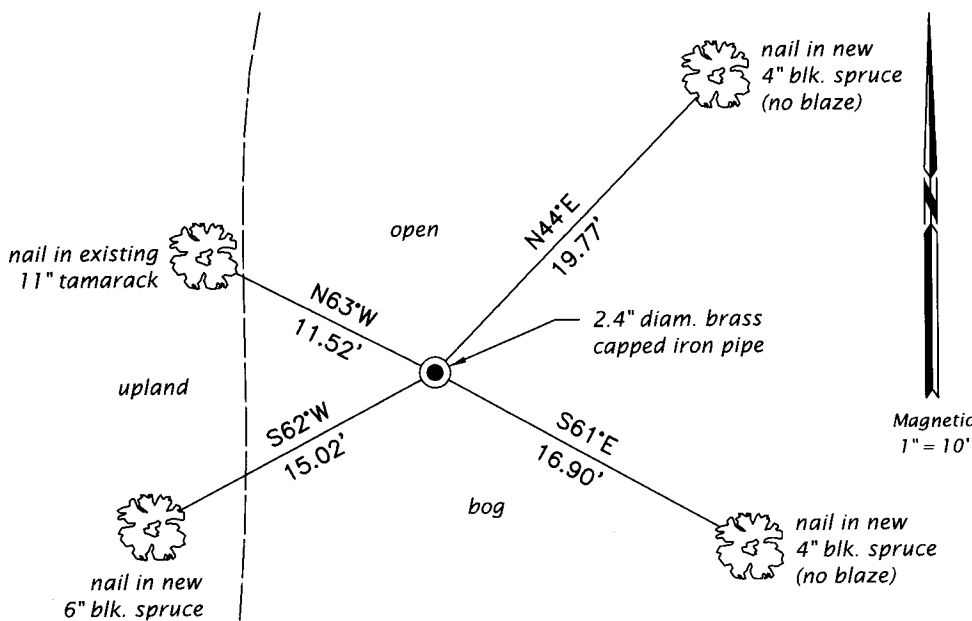
(b)(f)(g)(h) Description of monument found at this corner and if it was accepted, state all evidence (material, testimonial, occupational, plats, records, other monuments) used as a basis for accepting. If not accepted or if nothing was found, state evidence used as basis for establishing location. If re-established through lost corner proportionate methods, indicate all monuments, distances and directions used to establish. Indicate type of monument and sign post found or set.

*Dec. 22, 2003: On OCS map no. B-5577, James L. Will identifies corner as "Oneida Co. iron pipe brass cap set."*

*Oct. 16, 2019: I found and accepted the record monument, a 2.4" diam. iron pipe with a 2.4" diam. brass cap submerged 2" beneath the water surface. I was unable to read the markings on the cap. I found stump remains of both GLO bearing trees at record bearing and distance. I found or established accessories as shown below. I found a white vinyl sign post adjacent to the monument.*

*The coordinate value shown has been verified by at least one of the following methods: 1) comparison to a previously GPS determined published value; 2) the value is the average of two or more GPS observations at a markedly different time; 3) one or more distances were measured back to the GPS observed corner from temporary GPS observed offset locations.*

(c)(d)(e) Plan view of corner with ties to at least 4 witness monuments. If in disagreement with previously established corner, show the distances between the two corners and also indicate the ties to the disputed.



REGISTER OF DEEDS OFFICE  
 ONEIDA COUNTY  
 FILED

DEC 23 2019

KYLE J. FRANSON  
 REGISTER OF DEEDS

(i) I, Jeffrey W. Austin, Professional Land Surveyor No. S-1885, hereby certify that the corner location on this record was determined by me or under my direction and control and that this U.S. Public Land Survey Monument Record is correct and complete to the best of my knowledge and belief.

*[Handwritten Signature]*  
 Signature

5 DEC 2019  
 Date