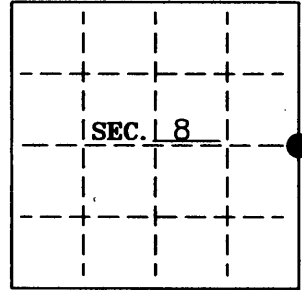


**U. S. PUBLIC LAND SURVEY MONUMENT RECORD**

Note: This form is intended and designed to fulfill all requirements of Wisconsin Administrative Code-Chapter A-E 7.08 U. S. Public Land Survey Monument Record (3)(a)(b)(c)(d)(e)(f)(g)(h)(i). An additional sheet may be added if necessary to conform with said requirements.

(a) CORNER LOCATION: State Plane Coordinates  
 E 1/4 corner of Sec. 8 X ---  
 Township 39 North Y ---  
 Range 8 East Datum Base ---  
 Town Newbold County of Oneida



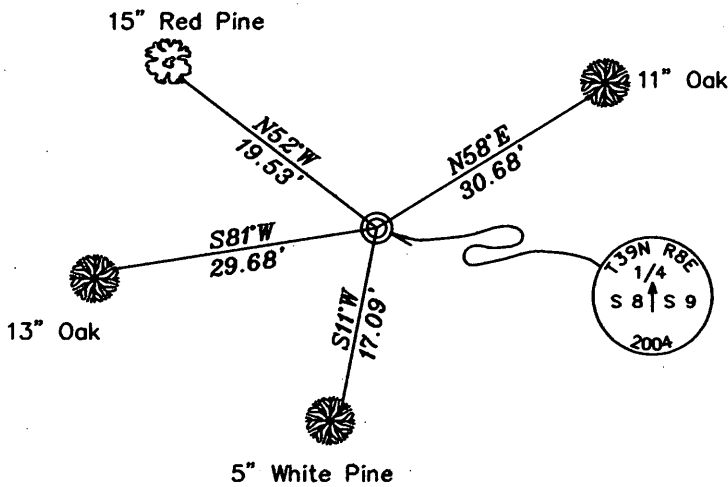
(b) HISTORY OF ORIGINAL CORNER ESTABLISHMENT:  
 Original Surveyor: W. Daugherty  
 Date of Survey: Commenced 1863  
 Completed 1863

Original B.T.'S  
 8" White Pine, N85°W, 17 lks  
 10" White Pine, N70°E, 8 lks

(b)(f)(g)(h) Description of monument found at this corner and if it was accepted—state all evidence (material—testimonial—occupation—plats—records—other monuments) used as a basis for accepting. If not accepted or if nothing was found state evidence used as basis for establishing location. If reestablished through lost corner proportionate methods indicate all monuments—distances and directions used to establish. Indicate type of monument and sign post found or set.

- 1938— Wisconsin Valley Improvement Co. found a 2-1/4" o.d. iron pipe. BT's: 12" Jack Pine, N82°E, 31.7', 9" Jack Pine, S17°W, 20.0'.
- 1963— I. Branham's field notes indicate that he found a CCC Post at the corner location.  
 - DNR field notes indicate they found a 2" iron pipe, and WVIC BT's (Date unknown).
- 2004— I found and accepted a 2-1/2"x4' iron pipe. I found possible 9" J. Pine stump badly deteriorated, and possible depression at 12" J. Pine BT location. I replaced the pipe with an Oneida County Aluminum Monument and witnessed the corner as drawn below

(c)(d)(e) Plan view of corner with ties to at least 4 witness monuments. If in disagreement with previously established corner—show the distances between the two corners and also indicate the ties to the disputed.



REGISTER OF DEEDS OFFICE  
 ONEIDA COUNTY, WIS.  
**FILED**  
 OCT 11 2005  
 At \_\_\_\_\_ O'Clock \_\_\_\_\_ M  
 THOMAS H. LEIGHTON  
 REGISTER OF DEEDS

- Oneida County Alum. Monument  
 - Set alum. nails in sides of double blazed new B.T.'s.  
 - Set white plastic guard post ±1' East

(i) I Stuart L. Foltz S-1170  
 hereby certify that the corner location on this record was determined by me or under my direction and control and that this U.S. Public Land Survey Monument Record is correct and complete to the best of my knowledge and belief.

Stuart L. Foltz 10/5/05  
 Signature Foltz and Associates, Inc. Date

WISCONSIN  
 STUART L. FOLTZ  
 S-1170  
 WOODRUFF  
 WIS.  
 LAND SURVEYOR

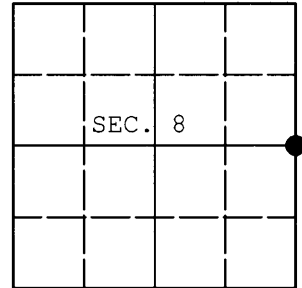
INDEX NO. 69

3908082000

**U.S. PUBLIC LAND SURVEY MONUMENT RECORD**

Note: This form is intended and designed to fulfill all requirements of Wisconsin Administrative Code, Chapter A-E 7.08 U.S. Public Land Survey Monument Record (3) (a) (b) (c) (d) (e) (f) (g) (h) (i). An additional sheet may be added if necessary to conform with said requirements.

(a) CORNER LOCATION: WISCORS (Oneida County)  
1/4 Cor. of Secs. 8 & 9 N: 254,063.78 USft  
Township 39 North E: 239,277.51 USft  
Range 8 East of the 4th P.M. Datum: NAD 1983(2011)  
Town of Newbold County of Oneida



(b) HISTORY OF ORIGINAL CORNER ESTABLISHMENT

Original Surveyor: Original Accessories:  
Date of Survey: Commenced:  
Completed:

(b) (f) (g) (h) Description of monument found at this corner and if it was accepted, state all evidence (material, testimonial, occupational, plats, records, other monuments) used as a basis for accepting. If not accepted or if nothing was found, state evidence used as basis for establishing location. If re-established through lost corner proportionate methods, indicate all monuments, distances and directions used to establish. Indicate type of monument and sign post found or set.

NOTE: This is a perpetuation of a previous USPLS Monument Record by Stuart L. Foltz, RLS dated October 5, 2005 and filed in the office of the Oneida County Register of Deeds. A complete history of the corner can be found on the previous monument record. I accept the previous location as a true and faithful perpetuation or reestablishment of the original corner location and further perpetuate it as follows.

March 26, 2014: I found and accepted Foltz's monument, a 2.5" diam. aluminum monument with Oneida Co. aluminum cap. Foltz's accessories were found in substantial agreement with his previous record and were not remeasured as the sole purpose of this work is to report the coordinates of the corner point.

The coordinates shown were derived from a direct RTN GPS observation referenced to the WISCORS network.

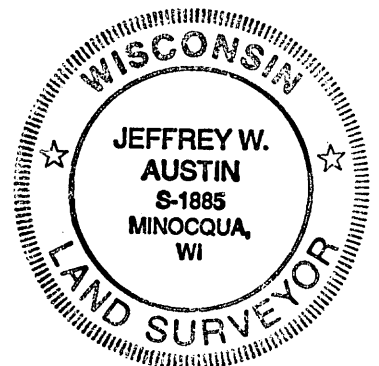
(c) (d) (e) Plan view of corner with ties to at least 4 witness monuments. If in disagreement with previously established corner, show the distances between the two corners and also indicate the ties to the disputed.

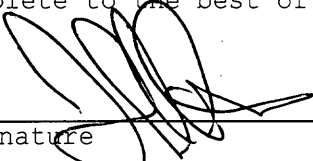
REGISTER OF DEEDS OFFICE  
ONEIDA COUNTY  
FILED

MAY 22 2014

AT \_\_\_\_\_ O'CLOCK \_\_\_\_\_ M  
KYLE J. FRANSON  
REGISTER OF DEEDS

(i) I, Jeffrey W. Austin, Registered Land Surveyor No. S-1885, hereby certify that the corner location on this record was determined by me or under my direction and control and that this U.S. Public Land Survey Monument Record is correct and complete to the best of my knowledge and belief.



  
Signature

MAY 9, 2014  
Date