

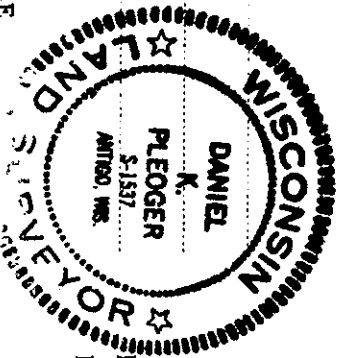
CERTIFIED LAND CORNER RESTORATION

Index No. 1-21

State of Wisconsin } ss.  
County of Oneida

I Daniel K. Plegger, do hereby certify that on the 15th day of July, 1980, I found evidence of the section corner of sections 11, 12, 13, 14 Township 39, North, Range 8 East, Fourth Principal Meridian, as described hereon; and that from this evidence I established a new monument and accessories as described hereon to perpetuate the original location of this corner.

Resident witnesses:



History of original corner establishment:  
Corner established by Alexander Anderson, deputy surveyor, in 1863 from which black pine 10" bears S 36-1/2° W, 16 links and black pine 10" bears S 11° W, 28 links.

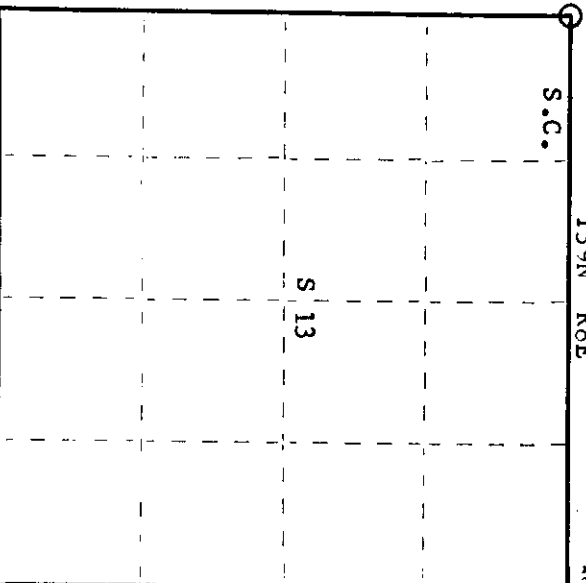
Description of corner evidence found:

Recovered W.C.D. 1-1/2" iron pipe with brass cap, stamped:  
Monument projects 12" above ground.

O.B.T.'s -  
Pine stump 14" N43°W 37.9 links, scribed S11-BT  
Jack pine 8" S29°W 4.35 feet, scribed S.C. BT.  
Jack pine 6" N14°E 18.38 feet, scribed S.C. BT.

Description of monument and accessories I established to perpetuate the original location of this corner.

Marked N.B.T.'s -  
Jack Pine 7" N62°E 17.09 feet  
Jack Pine 11" N53°W 15.18 feet  
scribed S.C. BT.



○ = Corner monument restored.

Dated at Rhinelander, Wis., this 13th day of October, 1980.

Signature Daniel K. Plegger Title Registered Land Surveyor Registration No. 1537  
(County Surveyor, Registered Land Surveyor, or other duly authorized official)

Office of Register of Deeds, County of Oneida 30th day of October hereby certify that the within instrument was filed in this office for record on the 100 o'clock P M. day of October, 1980

Terri Urage Tucker  
(Register of Deeds)

By: \_\_\_\_\_ Deputy

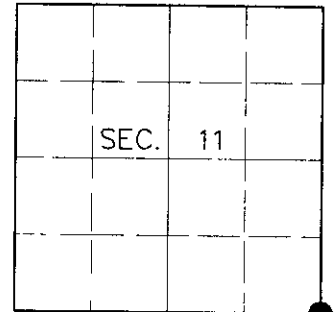
3908110000

# U.S. PUBLIC LAND SURVEY MONUMENT RECORD

Note: This form is intended and designed to fulfill all requirements of Wisconsin Administrative Code, Chapter A-E 7.08, U.S. Public Land Survey Monument Record (3)(a)(b)(c)(d)(e)(f)(g)(h)(i). An additional sheet may be added if necessary to conform with said requirements.

**(a) CORNER LOCATION**  
 Southeast Corner of Section 11  
 Township 39 North  
 Range 8 East  
 Town of Newbold

State Plane Coordinates  
 X  
 Y  
 Datum  
 County of Oneida



**(b) HISTORY OF ORIGINAL CORNER ESTABLISHMENT**

Original Surveyor: Alexander Anderson

Original Bearing Trees:

Date of Survey: Commenced July 22, 1863  
 Completed July 31, 1863

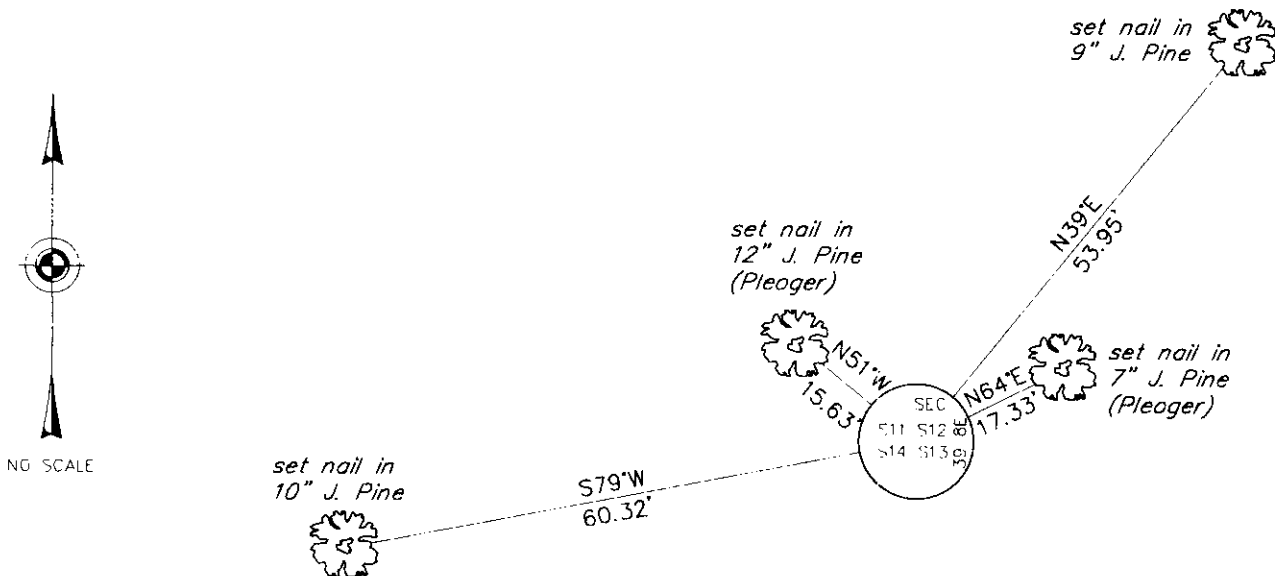
B. Pine 9 S21°E, 43 links  
 B. Pine 10 S11°W, 28 links

(b)(f)(g)(h) Description of monument found at this corner and if it was accepted, state all evidence (material, testimonial, occupational, plats, records, other monuments) used as a basis for accepting. If not accepted or if nothing was found, state evidence used as basis for establishing location. If reestablished through lost corner proportionate methods, indicate all monuments, distances and directions used to establish. Indicate type of monument and sign post found or set.

October 13, 1980: Certified Land Corner Restoration by Daniel K. Pleoger, Registered Land Surveyor. Pleoger found a WCD brass capped iron pipe with the following bearing trees: 8" J. Pine S29°W, 4.35 feet; 6" J. Pine N14°E, 18.38 feet; 7" J. Pine N62°E, 17.09 feet; 11" J. Pine N53°W, 15.18 feet.

March 28, 2000: I found and accepted a 1-3/4" dia. iron pipe with 3" dia. WCD brass cap 12" above grade and marked as shown below. I found Pleoger's J. Pine snag 10" S30°W, 4.5 feet. I established accessories as shown below and set a plastic sign post Northeast, 1 foot.

(c)(d)(e) Plan view of corner with ties to at least 4 witness monuments. If in disagreement with previously established corner, show the distances between the two corners and also indicate the ties to the disputed corner.



(i) I, Jeffrey W. Austin, Registered Land Surveyor S-1885, hereby certify that the corner location on this record was determined by me or under my direction and control and that this U.S. Public Land Survey Monument Record is correct and complete to the best of my knowledge and belief.

*[Handwritten Signature]*  
 \_\_\_\_\_  
 Signature

7 30 00  
 \_\_\_\_\_  
 Date



INDEX NO. J-21

3908110000