

U.S. PUBLIC LAND SURVEY MONUMENT RECORD

Note: This form is intended and designed to fulfill all requirements of Wisconsin Administrative Code, Chapter A-E 7.08 U.S. Public Land Survey Monument Record (3) (a) (b) (c) (d) (e) (f) (g) (h) (i). An additional sheet may be added if necessary to conform with said requirements.

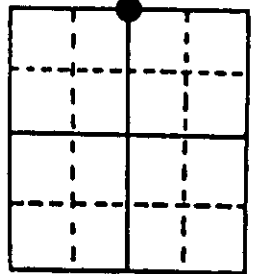
(a) Corner location: Township 39 North Corner: North 1/4 Corner

Section 14 Range 8 East Original Surveyor: A. Anderson

Town/City/Village Newhold

Original B.T.'s: 8" Bw S69°E 9 lks
8" Bw N70°W 9 lks

County Oneida

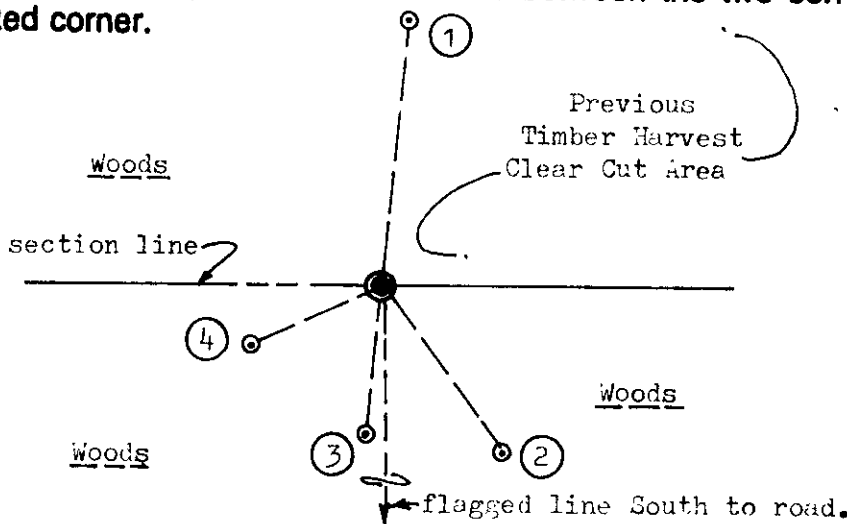


Original Survey Date: July 1863 ● Location

(b) (f) (g) (h) Description of monument found at this corner and if it was accepted, state all evidence (material, testimonial, occupational, plats, records, other monuments) used as a basis for accepting. If not accepted or if nothing was found, state evidence used as basis for establishing location. If reestablished through lost corner proportionate methods, indicate all monuments, distances and directions used to establish. Indicate type of monument found or set and sign post.

Found and accepted an old 2" dia. iron pipe monument with uncapped top 20" above existing grade at corner location. I carefully removed the old iron pipe and reset corner location with a standard 2" dia. by 48" long iron pipe monument with stamped DNR brass cap 15" above grade. Standard white poly 'T' corner marker post also set 10" west of corner monument and I left old 48" long iron pipe monument flat on ground at new monument location. Older tree growth lines are evidenced to North and East of corner adjoining previous timber harvest area to NE of corner. All original GLO survey corner evidence is now obliterated or not certain due to deterioration. In 1938, Wisconsin Valley Improvement Company set the 2" dia. iron pipe monument I found at the corner by their section line resurvey; their 7" Pn stump BT N83°E 0.418 chains is now a 30" high square stub with lower face blaze and scribing plain N85°E, and their 24" Pn stump BT S38°W 0.712 chains is now a 24" high pike stub with face blaze and scribing evidenced on North lower face. In 1975, Lee Andreas/WVIC noted 2" I.F. OK and 1938 stump BT. In 1990, Kimball, et al/Wis DNR found 2" iron pipe at this corner and both 1938 WVIC BTs as stumps, and marked four(4) new BTs which I found OK for new ties measured below. Recovery completed July 29, 1997; no witnesses. The corner is located about 167' North of centerline of East/West roadway named Oxbow Lane.

(c) (d) (e) Plan view of corner with ties to at least 4 witness monuments. If in disagreement with previously established corner, show the distances between the two corners and also indicate the ties to the disputed corner.



Witness Monument Ties:

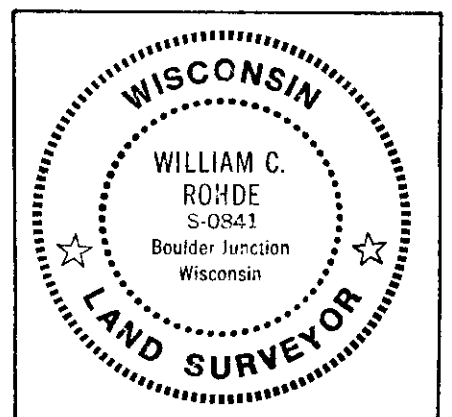
- ① 14" Pj BT N06°E 55.50 to PK nail/washer in left face.
- ② 12" Pj BT S36°E 43.36'.
- ③ 7" Mr BT right trunk of a double S05°W 31.07'.
- ④ 13" Pj BT S62°W 29.82'.

Note: all BTs have an upper blaze with BT scribe.

Unless otherwise indicated, all BT witness monument ties are to a 1/4" dia. by 2.5" long PK nail with 1.25" dia. steel washer set in unblazed right face bark; and a PK nail with 2" dia. steel washer stamped BT also set in unblazed front face bark of each BT at DBH. All previous corner recovery notes from Wisconsin DNR and/or Oneida County survey records.



Scale: 1" = 40'



(i) I, William C. Rohde, RLS 841
(type or print name) certify that the corner location on this record was determined by me or under my direction and control and that this U.S. Public Land Survey Monument Record is correct and complete to the best of my knowledge and belief.

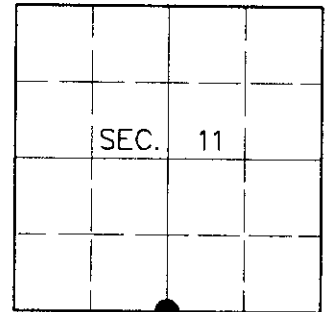
William C. Rohde Signature July 29, 1997 Date

U.S. PUBLIC LAND SURVEY MONUMENT RECORD

Note: This form is intended and designed to fulfill all requirements of Wisconsin Administrative Code, Chapter A-E 7.08, U.S. Public Land Survey Monument Record (3)(a)(b)(c)(d)(e)(f)(g)(h)(i). An additional sheet may be added if necessary to conform with said requirements.

(a) CORNER LOCATION
 South ¼ Corner of Section 11
 Township 39 North
 Range 8 East
 Town of Newbold

State Plane Coordinates
 X
 Y
 Datum
 County of Oneida



(b) HISTORY OF ORIGINAL CORNER ESTABLISHMENT

Original Surveyor: Alexander Anderson

Original Bearing Trees:

Date of Survey: Commenced July 22, 1863
 Completed July 31, 1863

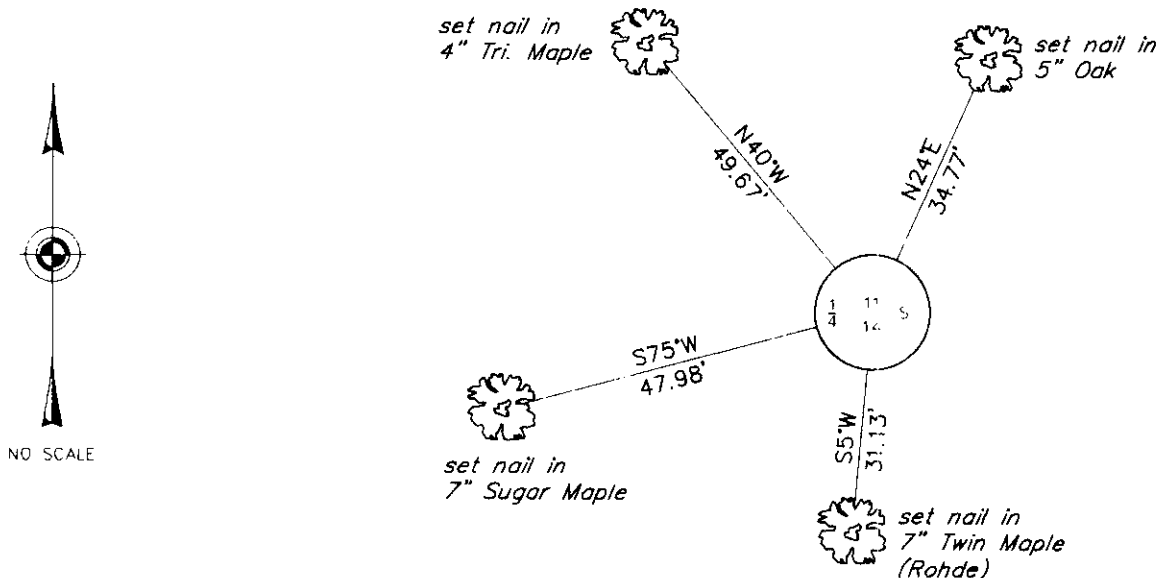
Birch 8 S69-½°E, 9 links
 Birch 8 N70°W, 9 links

(b)(f)(g)(h) Description of monument found at this corner and if it was accepted, state all evidence (material, testimonial, occupational, plats, records, other monuments) used as a basis for accepting. If not accepted or if nothing was found, state evidence used as basis for establishing location. If reestablished through lost corner proportionate methods, indicate all monuments, distances and directions used to establish. Indicate type of monument and sign post found or set.

July 29, 1997: U.S. Public Land Survey Monument Record by William C. Rohde, Registered Land Surveyor. Rohde set a DNR brass capped iron pipe with the following bearing trees: 14" PJ N6°E, 55.50 feet; 12" PJ S36°E, 43.36 feet; 7" MR S5°W, 31.07 feet; 13" PJ S62°W, 29.82 feet.

March 28, 2000: I found and accepted a 2-½" dia. iron pipe with 3" dia. DNR brass cap 12" above grade and marked as shown below. I found all but one of Rohde's trees wind-thrown. I established accessories as shown below and found a plastic sign post West, 1 foot.

(c)(d)(e) Plan view of corner with ties to at least 4 witness monuments. If in disagreement with previously established corner, show the distances between the two corners and also indicate the ties to the disputed corner.



(i) I, Jeffrey W. Austin, Registered Land Surveyor S-1885, hereby certify that the corner location on this record was determined by me or under my direction and control and that this U.S. Public Land Survey Monument Record is correct and complete to the best of my knowledge and belief.

Signature: *[Handwritten Signature]*
 Date: 7 29 00



INDEX NO. J-19

3908110020