

U.S. PUBLIC LAND SURVEY MONUMENT RECORD

Note: This form is intended and designed to fulfill all requirements of Wisconsin Administrative Code, Chapter A-E 7.08 U.S. Public Land Survey Monument Record (3) (a) (b) (c) (d) (e) (f) (g) (h) (i). An additional sheet may be added if necessary to conform with said requirements.

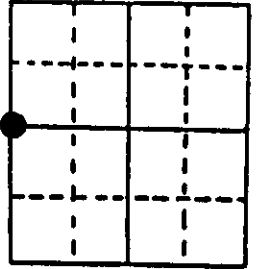
(a) Corner location: Township 39 North Corner: West 1/4 Corner

Section 12 Range 8 East Original Surveyor: A. Anderson

Town/City/Village Newbold

Original B.T.'s: 10" Pj S69°W 95 lks
9" Pj S76½°E 17 lks

County Oneida

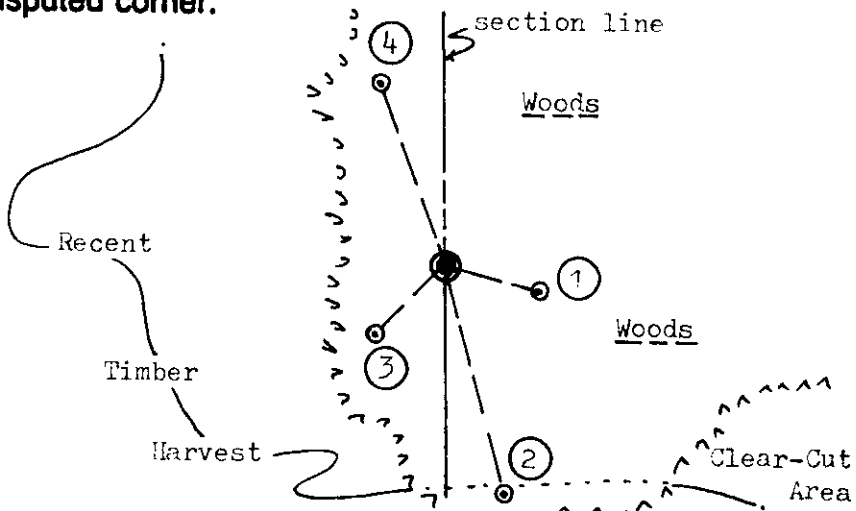


Original Survey Date: July 1863 ● Location

(b) (f) (g) (h) Description of monument found at this corner and if it was accepted, state all evidence (material, testimonial, occupational, plats, records, other monuments) used as a basis for accepting. If not accepted or if nothing was found, state evidence used as basis for establishing location. If reestablished through lost corner proportionate methods, indicate all monuments, distances and directions used to establish. Indicate type of monument found or set and sign post.

Found and accepted a standard 1½" dia. iron pipe monument with stamped WCD brass cap 21" above existing grade at corner location. Corner is 136' South of an existing East/West dirt roadway and about 210' East of an existing North/South dirt roadway, in juncture corner of recent timber harvest clear cut to West and South. I set a standard white poly 'T' corner marker post along east side of iron pipe monument to aid future recovery in heavy slash. All original GLC survey corner evidence is now obliterated. In 1967, Berndt/WCD set the WCD capped iron pipe monument at corner by section line resurvey; his 4" Pj BT N84°W is now gone, and his 6" Pj S78°E at 0.147 chains found and used for new ties below. In 1990, Kimball, et al Wis DNR found Berndts WCD capped iron pipe monument at corner and noted Berndts NW BT gone and SE BT OK; and noted new BTs to three(3) Pj which I found OK and used for new ties on this record indicated below, and which have a blazed upper face with BT scribed on each. Upper & lower face blazes are open and plain on Berndts 1967 Pj BT SE also. Recovery completed on July 28, 1997; no witnesses.

(c) (d) (e) Plan view of corner with ties to at least 4 witness monuments. If in disagreement with previously established corner, show the distances between the two corners and also indicate the ties to the disputed corner.

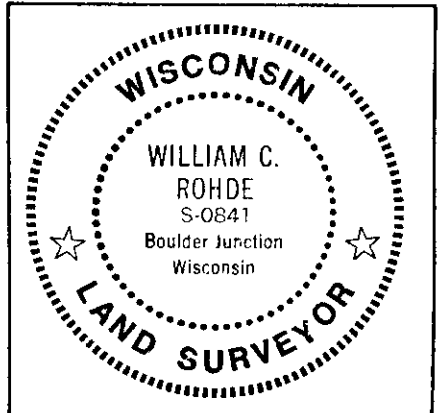


Witness Monument Ties:

- ① Record BT 10" Pj S74°E 9.80'.
- ② 9" Pj BT S13°E 24.58'.
- ③ 10" Pj BT S47°W 10.30'.
- ④ 10" Pj BT N20°W 20.30'.

Unless otherwise indicated, all BT witness monument ties are to a 1/4" dia. by 2.5" long PK nail with 1.25" dia. steel washer set in unblazed right face bark; and a PK nail with 2" dia. steel washer stamped BT also set in unblazed front face bark of each BT at DBH. All previous corner recovery notes from Wisconsin DNR and/or Oneida County survey records.

Scale: 1" = 20'



(i) I, William C. Rohde, RLS 841
(type or print name) certify that the corner location on this record was determined by me or under my direction and control and that this U.S. Public Land Survey Monument Record is correct and complete to the best of my knowledge and belief.

William C. Rohde July 29, 1997
Signature Date

U.S. PUBLIC LAND SURVEY MONUMENT RECORD

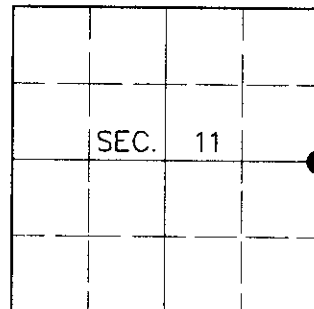
Note: This form is intended and designed to fulfill all requirements of Wisconsin Administrative Code, Chapter A-E 7.08, U.S. Public Land Survey Monument Record (3)(a)(b)(c)(d)(e)(f)(g)(h)(i). An additional sheet may be added if necessary to conform with said requirements.

(a) CORNER LOCATION

East ¼ Corner of Section 11
 Township 39 North
 Range 8 East
 Town of Newbold

State Plane Coordinates

X
 Y
 Datum
 County of Oneida



(b) HISTORY OF ORIGINAL CORNER ESTABLISHMENT

Original Surveyor: Alexander Anderson

Original Bearing Trees:

Date of Survey: Commenced July 22, 1863
 Completed July 31, 1863

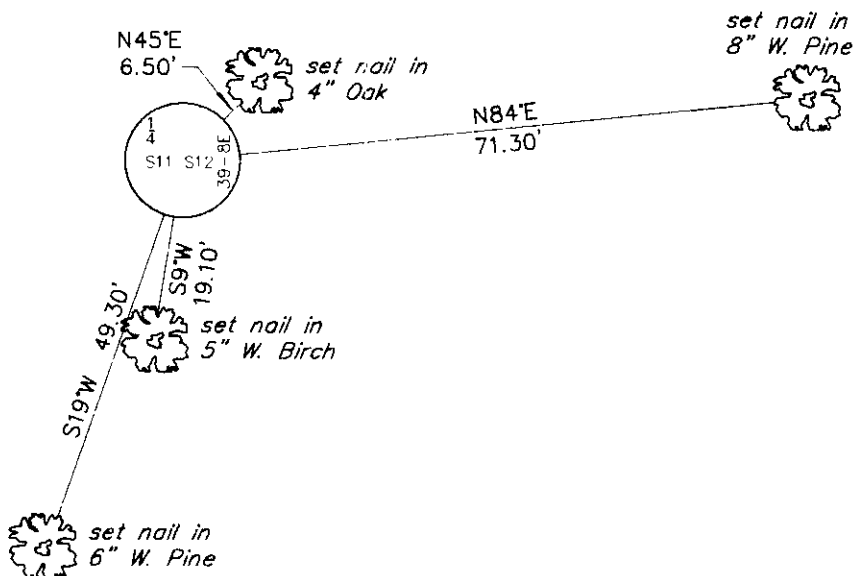
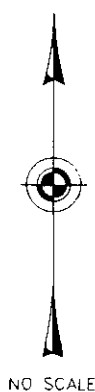
Y. Pine 10 S69°W, 95 links
 Y. Pine 9 S76-½°E, 17 links

(b)(f)(g)(h) Description of monument found at this corner and if it was accepted, state all evidence (material, testimonial, occupational, plats, records, other monuments) used as a basis for accepting. If not accepted or if nothing was found, state evidence used as basis for establishing location. If reestablished through lost corner proportionate methods, indicate all monuments, distances and directions used to establish. Indicate type of monument and sign post found or set.

July 29, 1997: U.S. Public Land Survey Monument Record by William C. Rohde, Registered Land Surveyor. Rohde found a WCD brass capped iron pipe with the following bearing trees: 10" PJ S74°E, 9.80 feet; 9" PJ S13°E, 24.58 feet; 10" PJ S47°W, 10.30 feet; 10" PJ N20°W, 20.30 feet.

March 28, 2000: I found and accepted a 1-¾" dia. iron pipe with 3" dia. WCD brass cap 20" above grade and marked as shown below. I found all of Rohde's trees wind-thrown. I established accessories as shown below and found a plastic sign post immediately adjacent to the monument.

(c)(d)(e) Plan view of corner with ties to at least 4 witness monuments. If in disagreement with previously established corner, show the distances between the two corners and also indicate the ties to the disputed corner.



(i) I, Jeffrey W. Austin, Registered Land Surveyor S-1885, hereby certify that the corner location on this record was determined by me or under my direction and control and that this U.S. Public Land Survey Monument Record is correct and complete to the best of my knowledge and belief.

Signature: *[Handwritten Signature]*
 Date: 7-29-00



INDEX NO. G-21

3908112000